



RECALL CAMPAIGN BULLETIN

Classification: EL20-047a	Reference: NTB21-003a	Date: February 3, 2021
------------------------------	--------------------------	---------------------------

VOLUNTARY SAFETY RECALL CAMPAIGN 2013-2015 PATHFINDER; STOP LAMP SWITCH ADJUSTMENT

This bulletin has been amended. See **AMENDMENT HISTORY** on the last page.
Discard all previous versions of this bulletin.

CAMPAIGN ID #: PC786
APPLIED VEHICLES: 2013-2015 Pathfinder (R52)

**Check Service COMM or Dealer Business Systems (DBS)
National Service History to confirm campaign eligibility.**

INTRODUCTION

Nissan is conducting this voluntary safety recall campaign, on certain specific model year 2013-2015 Pathfinder vehicles, to inspect and, if necessary, replace the TCC brake/stop lamp relay and adjust the stop lamp switch. This service will be performed at no charge to the customer for parts or labor.

IDENTIFICATION NUMBER

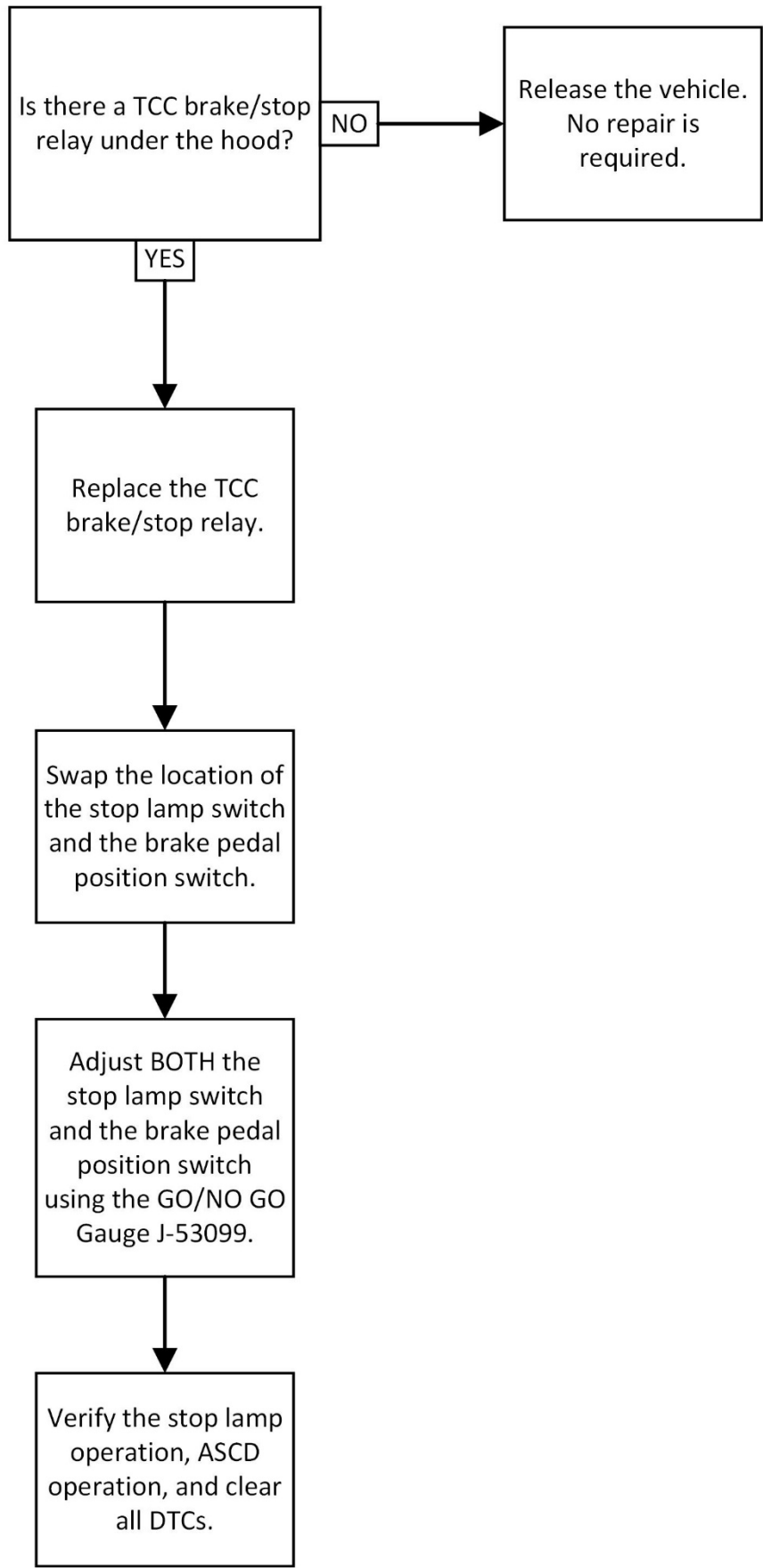
Nissan has assigned identification number PC786 to this campaign. This number must appear on all communication and documentation of any nature dealing with this campaign.

DEALER RESPONSIBILITY

It is the dealer's responsibility to check Service COMM or Dealer Business Systems (DBS) National Service History for the campaign status on each vehicle falling within the range of this voluntary safety recall which for any reason enters the service department. This includes vehicles purchased from private parties or presented by transient (tourist) owners and vehicles in a dealer's inventory. **Federal law requires that new vehicles in dealer inventory which are the subject of a safety recall must be corrected prior to sale. Failure to do so can result in civil penalties by the National Highway Traffic Safety Administration.** While federal law applies only to new vehicles, Nissan strongly encourages dealers to correct any used vehicles in their inventory before they are retailed.

Nissan Bulletins are intended for use by qualified technicians, not 'do-it-yourselfers'. Qualified technicians are properly trained individuals who have the equipment, tools, safety instruction, and know-how to do a job properly and safely. **NOTE:** If you believe that a described condition may apply to a particular vehicle, DO NOT assume that it does. See your Nissan dealer to determine if this applies to your vehicle.

REPAIR OVERVIEW



REQUIRED SPECIAL TOOL

Each dealer has been shipped one GO/NO-GO Gauge, special tool J-53099.

Additional tools are available from Tech•Mate online: www.nissantechmate.com, or by phone: 1-800-662-2001.



Figure 1

SERVICE PROCEDURE

Inspect for the TCC Brake/Stop Lamp Relay

1. Open the hood and add fender protection (Figure 2).
2. Locate the under hood fuse and relay box.

HINT: The under hood fuse and relay box is found under the passenger side cowl area.



Figure 2



Figure 3

3. Remove the cover of the under hood fuse and relay box.

HINT: Pull outward on the side latches to remove the cover.

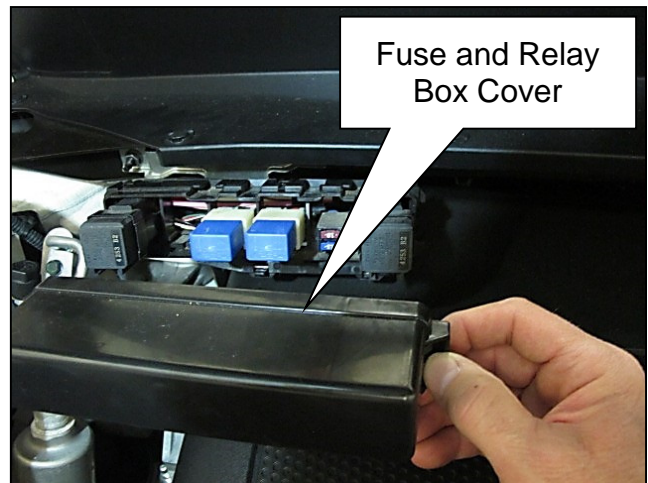


Figure 4

4. Locate the TCC brake/stop lamp relay.

- If the TCC brake/stop lamp relay is present, continue to step 5 on page 6.
- If the TCC brake/stop lamp relay is not present, no repair is required.
- Reassemble the vehicle in the reverse order of removal and review the **CLAIMS INFORMATION** on page 11.

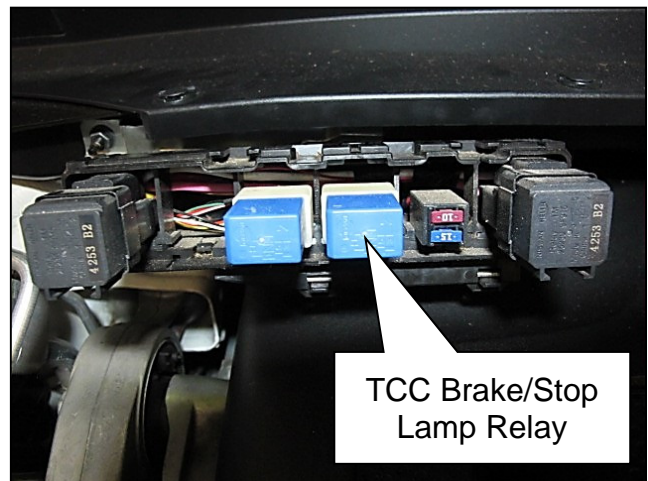


Figure 5

Replace TCC Brake/Stop Lamp Relay

5. Remove the TCC brake/stop lamp relay and discard (it will not be reused).

HINT: To release the relay, use a small, flat screw driver to push the relay latch inward (toward the relay) while gently pulling the relay outward.

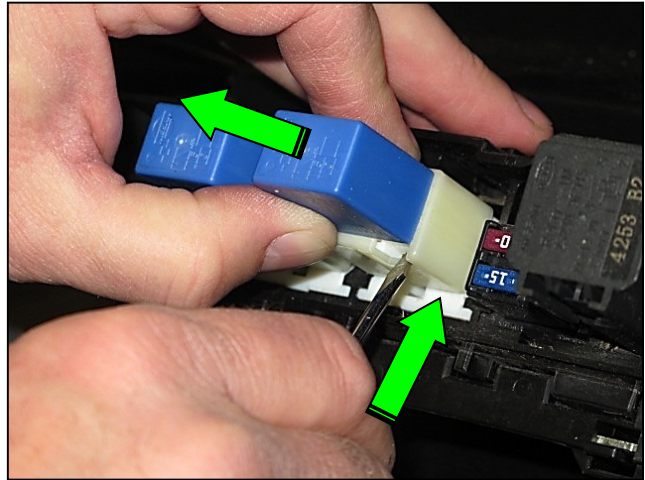


Figure 6

6. Install the new TCC brake/stop lamp relay listed in **PARTS INFORMATION** on page 11.

HINT: A click noise should be heard when the relay is fully seated.

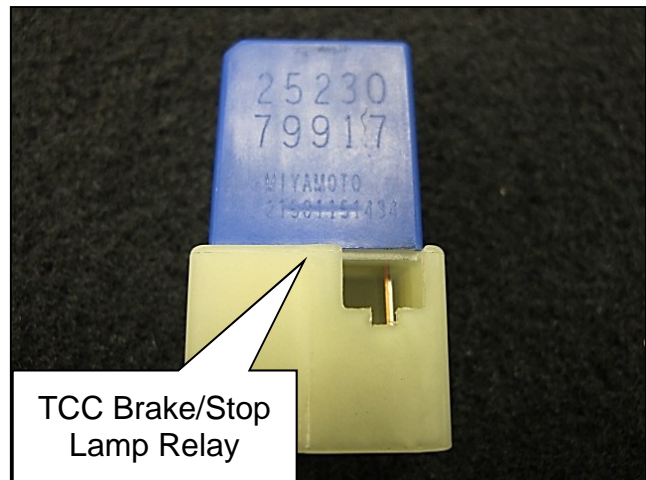


Figure 7

7. Install the fuse and relay box cover.



Figure 8

8. Remove the fender protection and close the hood.



Figure 9

Swap the Stop Lamp Switch and Brake Pedal Position Switch Locations

9. Open the driver side door and move the driver's seat to the full rearward position.



Figure 10

10. Look under the driver side lower dash area to locate the stop lamp switch and the brake pedal position switch.

HINT: Use a portable light source to illuminate the area. Both switches are to the right of the brake pedal.



Figure 11

11. Swap the positions of the stop lamp switch and the brake pedal position switch.

IMPORTANT: The stop lamp switch (white connector) must be in the upper position (Figure 12).

- Be sure to check the switch positions before swapping. Some vehicles may already have the stop lamp switch in the upper position and will not require the switch positions to be swapped.

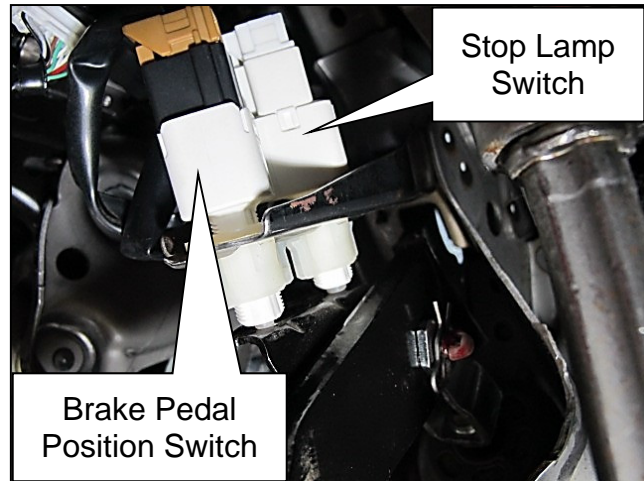


Figure 12

HINT: The stop lamp switch has a white connector with yellow and white wires. The brake pedal position switch has a tan connector with red and light green wires.

- There is no need to remove the harness connector from either of the switches.
- Turn the switches 45° counterclockwise to remove.
- To reinstall, insert the threaded end of the switches into the brake pedal bracket, and then turn the switches 45° clockwise to lock in place.

Adjust Both Switches

- Adjust both the stop lamp switch and the brake pedal position switch using the GO/NO-GO gauge, special tool J-53099 (Figure 13 and Figure 14).

IMPORTANT: Make sure that the clearance (A) between the brake pedal (3) and the brake pedal position and stop lamp switch (1 & 2) are within specification using the GO/NO-GO gauge, special tool J-53099. The stop lamps must turn OFF when the brake pedal is released.

- Be sure to adjust both the switches so that the gauge's GO side fits and the NO-GO side will not fit between the brake pedal and both of the switches.

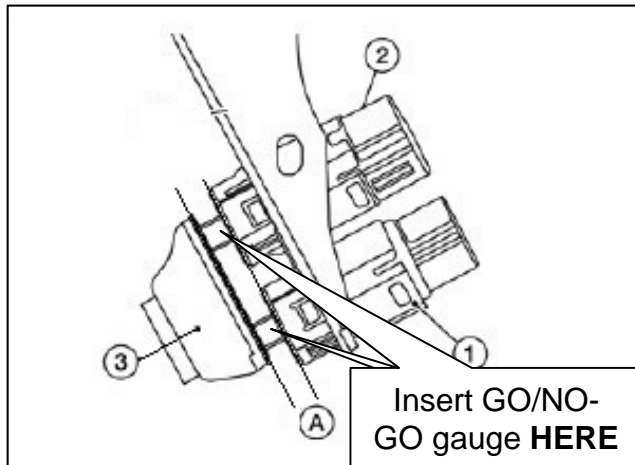


Figure 13

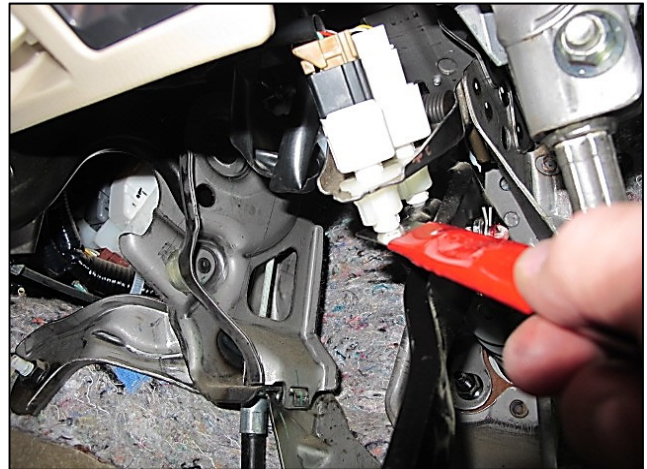


Figure 14

Completed Repair Validation Checks

- Verify the stop lamps operate properly.

NOTE: If the stop lamps do not operate properly, perform step 12 to readjust the switches.

IMPORTANT: The stop lamps must turn OFF when the brake pedal is released.



Figure 15

14. Verify the automatic speed control device (ASCD) operates correctly.

NOTE: If the ASCD does not operate correctly, perform step 12 to readjust the switches.

15. Verify no DTCs related to the stop lamp switch or brake pedal position switch adjustments are stored.

NOTE: If DTCs related to the switch adjustments are present, perform step 12 to readjust the switches.

PARTS INFORMATION

DESCRIPTION	PART NUMBER	QUANTITY
Relay	25230-79917	1 (If Needed)

CLAIMS INFORMATION

Submit a "CM" line claim using the following claims coding:

CAMPAIGN ("CM") ID	DESCRIPTION	OP CODE	FRT
PC786	Inspect for TCC Brake/Stop Lamp Relay (OK Condition, No Relay Present)	PC7860	0.2 hr
	Inspect and Replace TCC Brake/Stop Lamp Relay, Swap Stop Lamp Switch and Brake Pedal Position Switch Positions	PC7862	0.4 hr

AMENDMENT HISTORY

PUBLISHED DATE	REFERENCE	DESCRIPTION
January 20, 2021	NTB21-003	Original bulletin published
February 3, 2021	NTB21-003a	REQUIRED SPECIAL TOOL added, Step 12 revised, CLAIMS INFORMATION revised