

IMPORTANT SAFETY RECALL

This notice applies to your trailer(s), VIN(s):

January 2022

Dear _____,

This notice is sent to you in accordance with the National Traffic and Motor Vehicle Safety Act.

Alamo Group has decided that a defect which relates to motor vehicle safety exists in certain DCL800TM, GVM550TM, LCT450/600/650/6000, SCL800TM, and XV550TM, XV600/6000 model leaf vac trailers manufactured by Old Dominion Brush (“ODB”) in 2019 - 2021, including in the trailer(s) with the VIN(s) shown above. As a result, Alamo Group is conducting this safety recall. We apologize for this inconvenience. We are committed to your safety and satisfaction with our products, and we request that you remedy your trailer(s) promptly.

IMPORTANT

- Your trailer is involved in safety recall **21V-926** to remedy a mis-wired switch for the emergency braking system.
- A remedy is available now.
- You should contact your local ODB dealer or ODB’s Warranty Department to arrange for this free repair to be completed on your trailer.

Why is your trailer being recalled?

The emergency brake system’s breakaway switch was wired to the starter, not the battery; as a result, emergency braking capability is only operational while starting the trailer engine. If a trailer lacking emergency braking capability became untethered from the towing vehicle, the emergency trailer brake would not engage, increasing the risk of a crash.

What will we do?

The corrective action is to inspect the breakaway cable system and, if necessary, properly re-wire the system such that the emergency brake is connected to the battery instead of the starter. This remedy will be performed free of charge. The repair takes about 30 minutes to complete. Because of service scheduling requirements, it is likely that the dealer will need your trailer for a period of time longer than this actual repair performance time.

What should you do?

Please call your local ODB dealer to schedule your remedy appointment. For assistance in identifying your local ODB dealer, please contact the OBD Warranty Department at 1-800-446-9823 or warranty@odbco.com.

What if you no longer own this trailer?

Please contact your local ODB dealer or contact the ODB Warranty Department at 1-800-446-9823 or warranty@odbco.com and report that you no longer own this vehicle. Please also report the identity of new owner, if known to you.

What if you have already paid for this repair?

If this condition was identified and remedied on an affected trailer prior to this campaign, you may be eligible for reimbursement of the costs incurred for such remedy. Please contact the ODB Warranty Department, which can be reached at 1-800-446-9823 or warranty@odbco.com to pursue reimbursement.

Who should you contact if you have further questions or concerns?

Please contact the ODB Warranty Department at 1-800-446-9823 or warranty@odbco.com.

If, after contacting ODB, you are still not satisfied we have done our best to remedy this defect without charge and within a reasonable time, you may wish to write the Administrator, National Highway Traffic Safety Administration (NHTSA), 1200 New Jersey Avenue, SE, Washington, DC 20590, or call the toll-free Vehicle Safety Hotline at 1-888-327-4236 (TTY 1-800-424-9153), or go to <http://www.safercar.gov>. The NHTSA Campaign Number for this recall is **21V-926**.

NHTSA regulations require that any vehicle lessor receiving a notice of a defect pertaining to any leased motor vehicle must forward the notice to the lessee within 10 days.

Thank you for your attention to this important matter; your safety is our first concern.

Sincerely,



Tim Stumph
President
Old Dominion Brush Co.



Recall Remedy Service Bulletin

Safety Recall 21V-926

TSB 092921A LCT and TM Emergency Brakes
with John Deere Engines

Rev0

January 2022

Before performing any service, always follow applicable safety precautions. Consult company safety manual or supervisor for questions concerning safety.

Subject: Breakaway and emergency braking on all trailer units
Affected Products: All trailer units

Issue Description: Power supply to the emergency breakaway switch may have been incorrectly installed on the wrong terminal of the starter solenoid. If incorrectly installed, the emergency braking would only be applied while the starter is running.

Warning! Disable machine by disconnecting auxiliary engine's negative battery terminal. Failure to do so could result in equipment damage or serious injury.

Actions Required: Follow applicable bearing maintenance instructions supplied by ODB Operator's Manual.

Tools required:

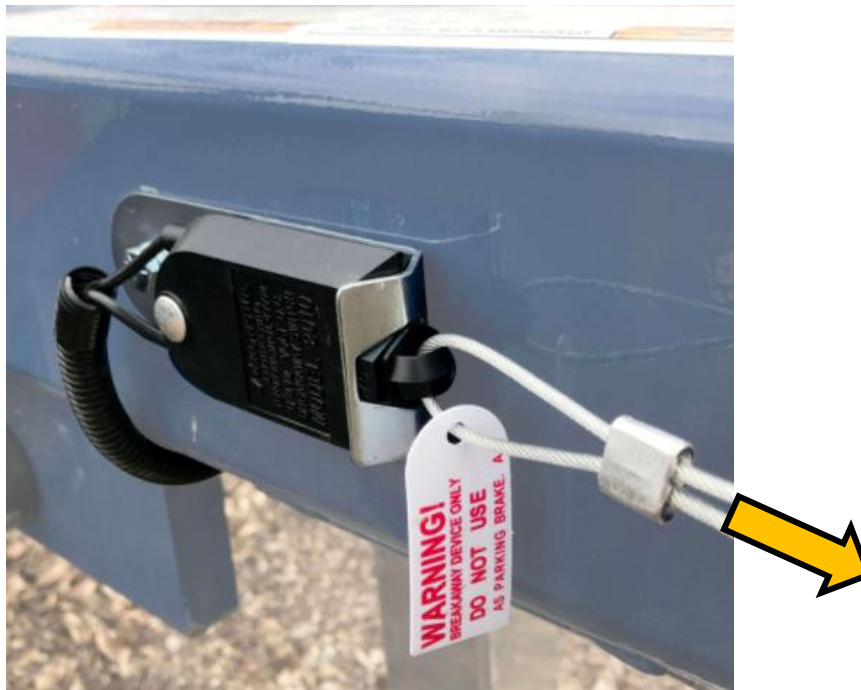
- As outlined in maintenance instructions in operator's manual.
- Towing vehicle
- Spotter

Procedure

First read all instructions. Then attempt the emergency brake check. If emergency brakes fail to engage, proceed to emergency brake power wire installation.

Brake check

1. Connect the trailer to a towing vehicle. Ensure that the trailer engine is off, with the key in the off position.
2. Pull the breakaway cable until plastic plug disconnects from switch housing, this should apply the emergency brakes.

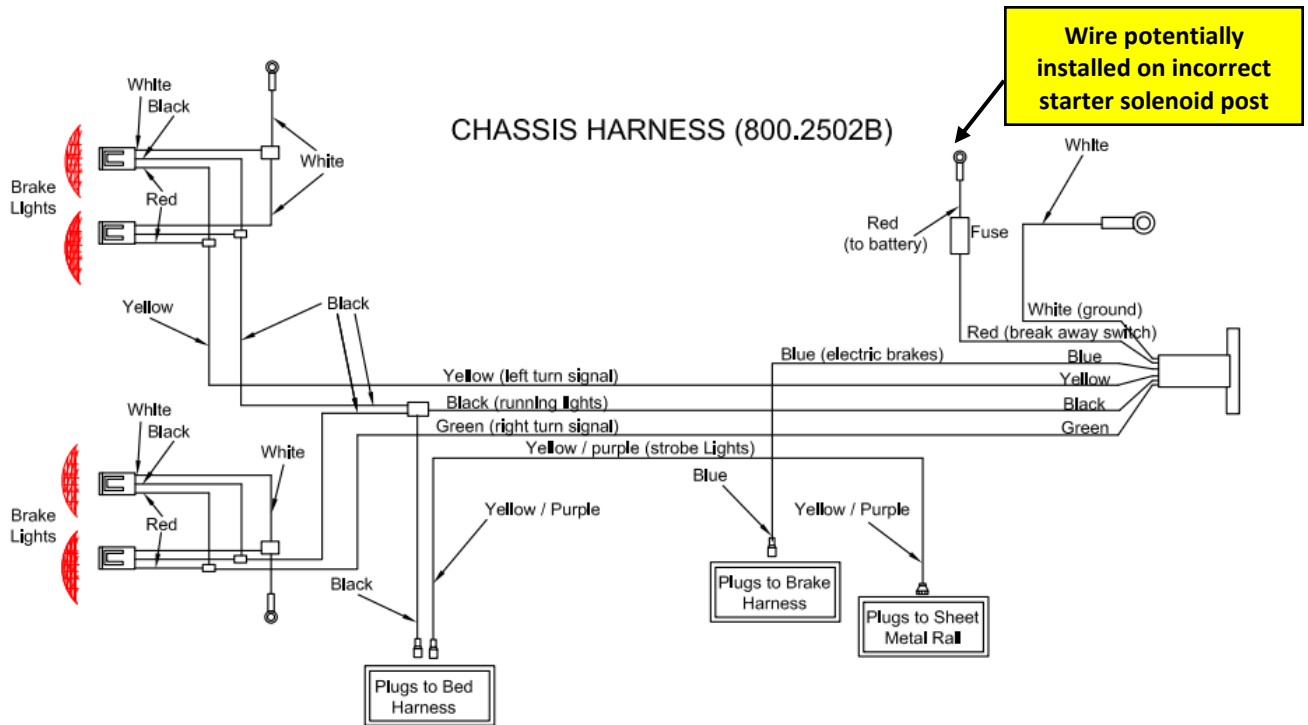


3. Attempt to drag the trailer 3 feet. Use a spotter to check that the brakes have been applied. Once the test is complete, reinstall the breakaway plug into the switch housing. **Failure to replace the plug into the breakaway switch housing will keep the emergency brakes applied and eventually drain the battery.**

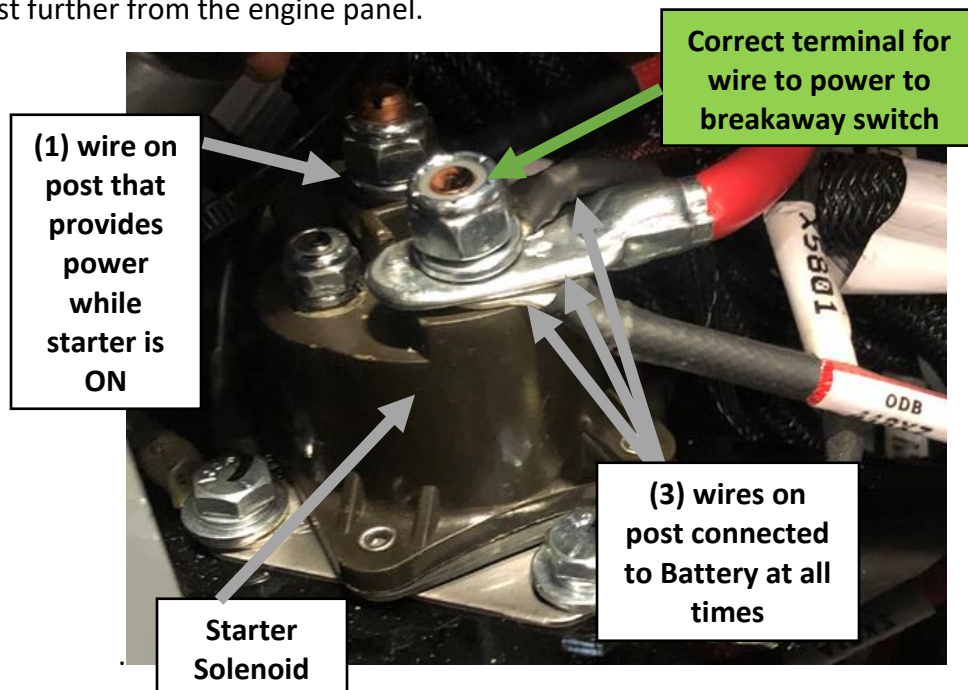
Emergency Brake Power Wire Installation

The chassis harness, (830XZ or 8002502B), provides power to the breakaway switch at the starter solenoid. If the chassis harness is connected to the wrong terminal, power cannot be applied to

provide emergency braking in the event of a breakaway between the trailer and towing vehicle. This hazardous condition would only occur if the debris collector's starter is off.



1. Open the engine panel facing the front of the machine. To the lower left, the starter solenoid is mounted to the engine bracket. Ensure that there are three ring terminals to the top post nearest the door opening. There should only be one ring terminal on the top post further from the engine panel.



2. If the emergency braking power wire needs to be relocated, ensure that the correct wire is selected. This wire will have an in line 15 amp fuse and fuse holder approximately 6 inches away from the ring terminal.
3. Once the wire has been relocated, repeat the "Brake Check".