

NRC MODIFICATIONS

October 13, 2021

IMPORTANT SAFETY RECALL

NHTSA Recall ID 21-V-624

RE: NHTSA RECALL 21V-624 for Lippert (Hehr Windows), 6400 Series

Dear Valued Customer,

This notice is sent to you in accordance with requirements of the National
Highway Traffic and Motor Vehicle Safety Act

Lippert has determined that a defect which is related to motor vehicle safety exists with the 6400 Series windows. The windows were manufactured from October 2018 thru August 2020. Lippert's records show that NRC purchased windows listed on the recall has been installed in motorhomes purchased by Fairview Motorsports.

The defect is a possible loss of bond between the 2 pieces of glass allowing the vent seal to be compromised. There is a possibility of the window adhesive failing which could allow the vent to detach and cause a crash.

Lippert will supply a gauge to be used while conducting inspections of the vent portion of the window, as well as the replacement vent if found to be defective. Lippert will also reimburse you for 0.4 labor charged by your dealers to inspect the window vent involved/ and or replace any needed vent at the flat rate of 0.5 hour. The parts are currently available.

Include in this notice is a 4 page guide from Lippert. It is a guide for replacement/ and or reimbursement if the repair has been completed.

NRC has determined that Fairview Motorsports has 7 motorhomes out in the field with potential window issues. NRC will provide you with the chassis and vin numbers of those units in this recall and letter.

If you are having difficulty getting you vehicle repaired in a reasonable amount of time or without charge, you may write to the: Administrator National Highway Traffic Safety Administration, 1200 New Jersey Ave, S.E., Washington D.C. 20590 or you can call the toll free Vehicle Safety hotline: 888-327-4236 or (TTY: 800-424-91532), or visit www.safecar.gov.

Lippert information for the window recall is as follows: phone 574-538-4514 or email at recall@lci1.com.

Sincerely,

NRC Modifications 51045 Greenfield Parkway, Middlebury IN 46540

NRC MODIFICATIONS

Fairview Motorsports

Unit N16727 35-1/2' Freightliner Cascadia VIN#3ALHGLD17JSJV5172

Unit N16732 27-1/2' Peterbilt VIN#1NPBGGGG10D604173

Unit N16735 37' Freightliner Cascadia VIN#3ALHGED14KDJZ7932

Unit N16738 35' Freightliner Cascadia VIN#3ALHGED16KDJZ7933

Unit N16743 35-1/2' Peterbilt 389 VIN#1NPXL49X8LD635356

Unit N16760 25-1/2' Freightliner Cascadia VIN#3ALAHLDV1LSLL4019

Unit N16745 20' Western Star VIN#5KKHBLD17LLLL4030

Fairview Motorsports

1735 Fairview Ave (mailing address is 2645 Prestwick Place)
Decatur IL 62521

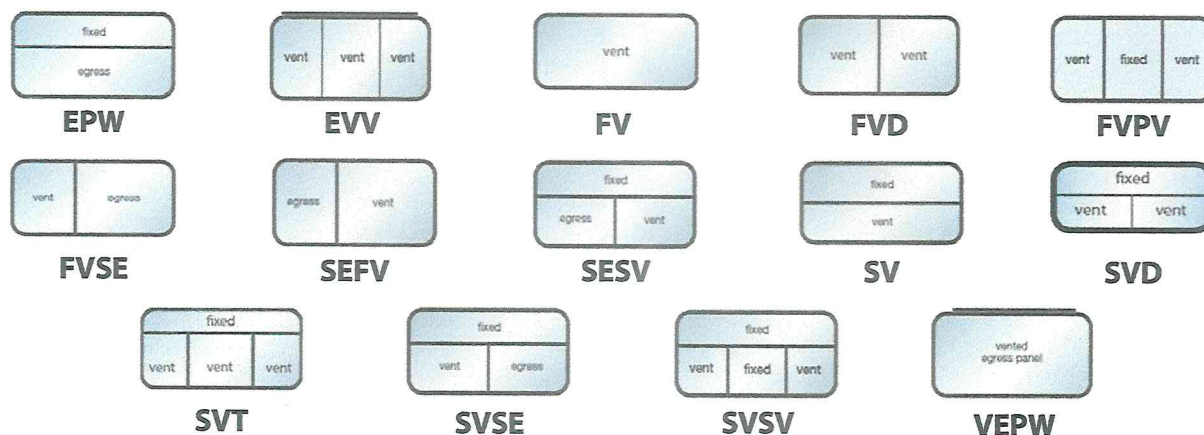
HEHR 6400 SERIES WINDOW VENT RECALL

Recall Number:	21E047		
Product:	Hehr 6400 Series Window Vent		
Date:	Original: June 29, 2021 Revised: Aug. 12, 2021	Labor Rate:	Inspection 0.4 hour per unit Replacement 0.5 hour per vent

NOTE: This document supersedes the previously-released version dated June 29, 2021. All part numbers highlighted in blue have been updated.

Subject

Inspection of the seal between the glass and frame on the following Hehr 6400 Series windows manufactured between October 1, 2018 and August 13, 2020.



Safety

This document provides general instructions. Many variables can change the circumstances of any procedure, i.e. the degree of difficulty involved in the service operation and the ability level of the individual performing the operation. This document cannot begin to plot out procedures for every possibility, but will provide the general instructions for effectively installing, removing or servicing the system. In the event the skill level required is too advanced or the procedure too difficult, a certified technician should be consulted before performing the necessary operation. Failure to correctly install, remove or service the system may result in voiding the warranty, inflicting injury or even death.

WARNING

The "WARNING" symbol above is a sign that a procedure has a safety risk involved and may cause death, serious personal injury, severe product and/or property damage if not performed safely and within the parameters set forth in this document.

CAUTION

The "CAUTION" symbol above is a sign that a procedure has a safety risk involved and may cause personal injury, product and/or property damage if not performed safely and within the parameters set forth in this document.

Resources Required

- Cordless or electric drill or screw gun
- Phillips screw bit
- 3/16" drill bit
- Pop rivet gun
- Ladder
- Gauge kit: Part Number 2021094575

HEHR 6400 SERIES WINDOW VENT RECALL

Recall Number:	21E047		
Product:	Hehr 6400 Series Window Vent		
Date:	Original: June 29, 2021 Revised: Aug. 12, 2021	Labor Rate:	Inspection 0.4 hour per unit Replacement 0.5 hour per vent

Window Identification

Window Size

Window Size ____ X ____ = from inside trim ring RPO label or measure outside the whole/entire window
Width X Height of glass, edge-to-edge.

Egress Windows

- A. Inside the unit an EXIT sticker (Fig. 1) or red handle (Fig. 2A) will be present.
- B. Outside the unit the white backside of the EXIT sticker will be visible.

Insulated Windows

- A. Inside the unit a smaller INSULATED WINDOW sticker (Fig. 3) or a super spacer (Fig. 4) sandwiched between two panes of glass can be seen.
- B. Outside the unit the white backside of the INSULATED WINDOW sticker (Fig. 3) is seen.

Egress and Insulated

- A. Inside the unit a smaller INSULATED WINDOW sticker (Fig. 3) can be seen or the super spacer (Fig. 4) sandwiched between two panes of glass will be visible in addition to the EXIT sticker (Fig. 1) or red handle (Fig. 2A).
- B. Outside the unit the white backside of the INSULATED WINDOW sticker (Fig. 3) can be seen located above the white backside of the EXIT sticker (Fig. 1).

Fig. 1



Fig. 2

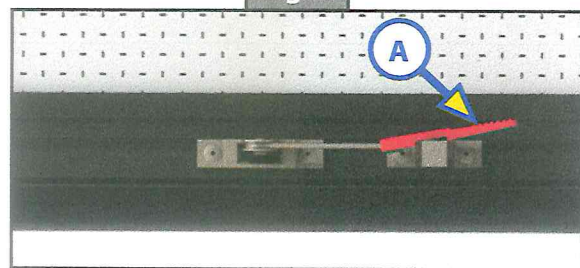
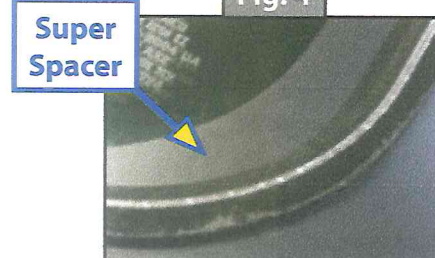


Fig. 3



Fig. 4



HEHR 6400 SERIES WINDOW VENT RECALL

Recall Number:	21E047		
Product:	Hehr 6400 Series Window Vent		
Date:	Original: June 29, 2021 Revised: Aug. 12, 2021	Labor Rate:	Inspection 0.4 hour per unit Replacement 0.5 hour per vent

Inspection

The provided gauge has a colored segment at one end (Fig. 5). Use the gauge as outlined in the instructions below to determine any possible break in the seal.

1. Be sure window is in closed position.
2. Lightly insert the gauge into the gap between the glass and the frame (Fig. 6) starting near the hinge on the exterior side of the window.
3. The gauge should stop within the colored segment (Fig. 7).
4. Continue reinserting the gauge at different points, working around the glass.

NOTE: If the gauge inserts beyond the colored segment (Fig. 8) this indicates a possible break in the seal and the vent of the window will need replacing.

Fig. 5

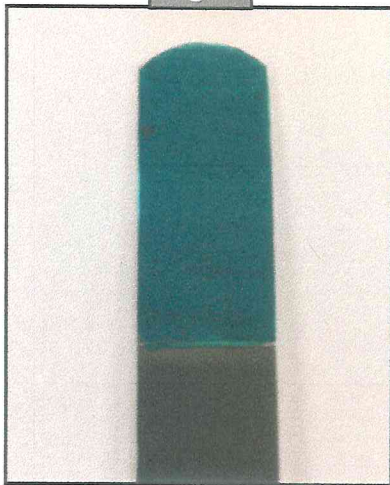


Fig. 6



Fig. 7

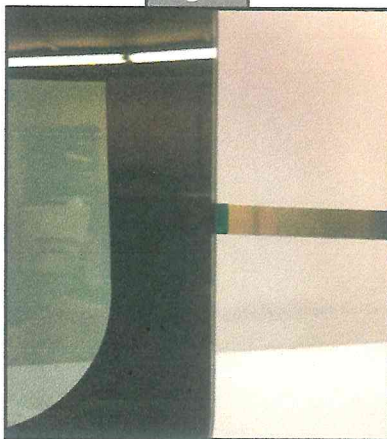
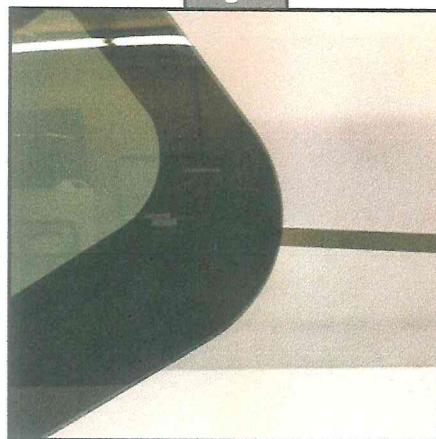


Fig. 8



HEHR 6400 SERIES WINDOW VENT RECALL

Recall Number:	21E047		
Product:	Hehr 6400 Series Window Vent		
Date:	Original: June 29, 2021 Revised: Aug. 12, 2021	Labor Rate:	Inspection 0.4 hour per unit Replacement 0.5 hour per vent

Required Vent Replacement Documents

<https://lci-support-doc.s3.amazonaws.com/technical-information-sheets/windows/ccd-0003876.pdf>
<https://lci-support-doc.s3.amazonaws.com/technical-information-sheets/windows/ccd-0003877.pdf>

Action Required

Submit all claims to RV OEM.

Inspection: 0.4 hour per unit

Replacement: 0.5 hour per vent