



IMPORTANT SAFETY RECALL

August 2021

This notice applies to your vehicle, **VIN:** _____

Dear General Motors Customer:

This notice is sent to you in accordance with the National Traffic and Motor Vehicle Safety Act.

General Motors has decided that certain 20201 model year GMC Canyon vehicles fail to conform to Federal Motor Vehicle Safety Standard No. 110, "Tire Selection and Rims for Motor Vehicles with a GVWR of 4,536 kilograms (10,000 pounds) or less". As a result, GM is conducting a recall. We apologize for this inconvenience. However, we are concerned about your safety and continued satisfaction with our products.

IMPORTANT

- Your vehicle is involved in GM safety recall N212340735.
- Install the enclosed label or schedule an appointment.
- This service will be performed for you at **no charge**.

Why is your vehicle being recalled?

The vehicle capacity weight printed on the Tire and Loading Information placard is 22.5 kg (51 lbs.) more than intended. Loading in excess of the correct vehicle capacity weight may affect driving dynamics under certain conditions, increasing the risk of a crash.

What will we do?

The Cargo Carrying Capacity Reduced label for your vehicle is enclosed. To reduce your inconvenience, you can install the label easily by following the enclosed instructions. If you desire, however, you may take the label to your dealer for installation within the next 60 days. This service will be performed for you at **no charge**.

What should you do?

If you would like your dealer to install the label, you should contact your dealer to arrange a service appointment as soon as possible. Bring the label with you when you visit your dealer.

Do you have questions?

If you have questions or concerns that your dealer is unable to resolve, please contact the appropriate Customer Assistance Center at the number listed below.

Division	Number	Text Telephones (TTY)
GMC	1-866-996-9463	1-800-462-8583
Puerto Rico – English	1-800-496-9992	
Puerto Rico – Español	1-800-496-9993	
Virgin Islands	1-800-496-9994	

If after contacting your dealer and the Customer Assistance Center, you are still not satisfied we have done our best to remedy this condition without charge and within a reasonable time, you may wish to write the Administrator, National Highway Traffic Safety Administration, 1200 New Jersey Avenue, SE, Washington, DC 20590, or call the toll-free Vehicle Safety Hotline at 1.888.327.4236 (TTY 1.800.424.9153), or go to <http://www.safercar.gov>. The National Highway Traffic Safety Administration Campaign ID Number for this recall is 21V497.

Federal regulation requires that any vehicle lessor receiving this recall notice must forward a copy of this notice to the lessee within ten days.

Regina A. Carto

Vice President

Global Product Safety and Systems

Enclosure
GM Recall: N212340735

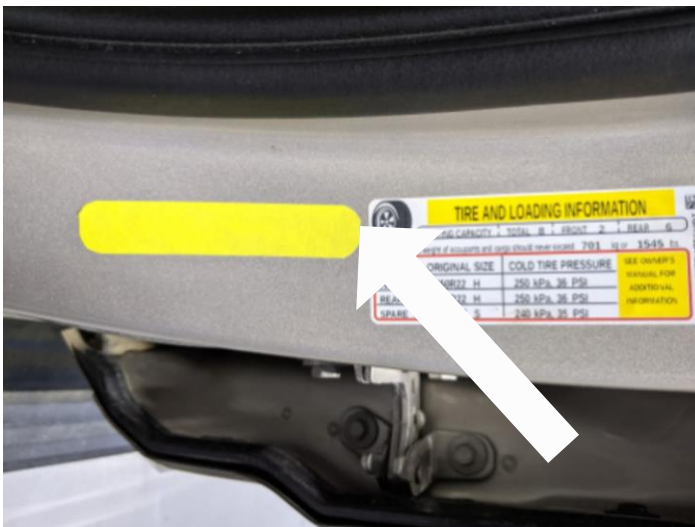
Payload Modification Label Installation Instructions:

TIRE AND LOADING INFORMATION			
SEATING CAPACITY	TOTAL 3	FRONT 3	REAR 0
The combined weight of occupants and cargo should never exceed 1602 kg or 3532 lbs.			
TIRE	ORIGINAL SIZE	COLD TIRE PRESSURE	SEE OWNER'S MANUAL FOR ADDITIONAL INFORMATION
FRONT	LT265/70R18ER	420 kPa, 60 PSI	
REAR	LT265/70R18ER	550 kPa, 80 PSI	
SPARE	LT265/70R18ES	550 kPa, 80 PSI	

1. Locate the Tire and Loading Information label on the "B" pillar in the driver side front door jamb.



2. Clean the mounting surface using isopropyl alcohol and dry with clean, lint free cloth. Receiving surface MUST be clean, dry and free of any contaminants.
3. Firmly hold the new label and peel protective liner from the back side, being careful not to touch or contaminate the adhesive with dirt or foreign matter.



4. Carefully align the top edge of the new label to the existing Tire and Loading Information label. Press firmly and smooth out entire label ensuring corners are fully adhered.