



IMPORTANT SAFETY RECALL - This notice applies to your **Vehicle(s)**

Safety Recall Notice 21V456

August 20, 2020

Customer Name
Customer Address
Customer City, State & Zip Code

Dear Terex Advance Owner,

This notice is sent to you in accordance with the requirements of the National Traffic and Motor Vehicle Safety Act.

REASON FOR RECALL

It has come to our attention that on some trucks, built between February 22, 2021 and May 5, 2021, the keyway, which prevents the swing drive gearbox output shaft from rotating within the drive sprocket, has become dislodged and fallen out of the assembly.

The result of this condition is two-fold:

1. The first noticeable indication may be that the swing function of the chutes either fails to operate or operates sporadically.
2. The second condition is when a truck is positioned on an incline with the chutes extended, the chutes may swing from their stationary position toward the downslope direction.

While the first presents a functional issue, it is the second condition that we are most concerned with that presents a potential safety hazard. An unrestrained chute **PRESENTS AN IMPACT OR CRUSHING HAZARD WHICH MAY RESULT IN INJURY** to anyone working within the swing zone. Potentially it also could result in property damage or damage to the concrete mixer.

WHAT TEREX WILL DO

Terex will provide the Inspection instructions required to determine if your vehicle(s) is impacted by this issue. The inspection instructions are contained in this document.

WHAT YOU SHOULD DO

If you have a truck that has been identified as falling within the suspect series, you are receiving this notification. Terex Advance Mixer is requiring that you take the following **immediate actions**:

- Immediately inspect for the suspect condition, using the inspection guide contained in this document
- If the keyway, or set screw are found to be missing or miss-installed, immediately conduct the repairs outlined in this document.

Please inspect and arrange any necessary repairs as soon as possible but no later than 60 days after receipt of replacement parts.

After contacting Terex Advance, if you are still not able to have the safety defect remedied, without charge and within a reasonable time, you may wish to write the: Administrator, National Highway Traffic Safety Administration, 1200 New Jersey Avenue, SE, Washington DC 20590 or call 1-888-327-4236 (TTY: 1-800-424-9153): or go to <http://www.safercar.gov>.

If you have had your unit repaired for this issue prior to receipt of this notice, you may be eligible for reimbursement. For more information, please contact Terex Advance at the above contact information.

If you no longer own this machine, please contact Terex Advance at the above contact information in order to help ensure the new owner receives this important safety information.

If you have leased this equipment to another person, you are required by Federal Law to forward a copy of this notice to the lessee by first class mail within ten days of your receipt of this notice.

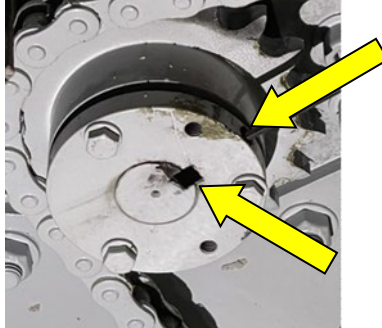
Thank you for your immediate attention on this important matter.

Our records indicate the following machines registered to you, are involved in Safety Notice 16V-806:

Model	Vehicle Identification Number
Model List	VIN Numbers

Inspection and Repair Procedure

Inspect to assure that the keyway remains installed and verify the proper set screw installation.



The photo above depicts a dislodged keyway

If either is not evident:

- The keyway is .375 x .375 x 2.25 carbon steel keyway.
- The set screw is a 5/16 cup point set screw

KEYWAY INSTALLATION

1. Back the set screw out far enough until it becomes exposed at the surface of the sprocket collar
2. With the chutes in a position approximately aligned with the chute saddle, align the keyway slots on the gearbox shaft and the drive sprocket.
3. Using a brass hammer or other form of shielding, drive the replacement keyway into the slot. The replacement keyway may need a slight bevel ground on all corners of the end being inserted to help facilitate the inset.

SET SCREW INSTALLATION *(This step should occur regardless of the keyway condition)*

1. With the keyway in the proper position, carefully remove the set screw.
2. Apply 1-2 drops of thread locker such as Loctite 271 to the threads of the set screw
3. Thread the set screw into the assembly until it firmly seats against the keyway.
4. Using a 5/32 Allen Head socket apply 160 in-lbs of tightening torque.

This concludes the Inspection and Repair Procedure.