



R20AM

FINAL NOTICE

DATE: September 22, 2020
TO: Blue Bird Owners
Subject: FMVSS 222 Noncompliance Seat Barrier Install Behind Driver Seat Integrated 3-Point Seatbelt

According to our records, Campaigns Administration has not received confirmation that the above referenced recall, dated April 22, 2020, has been completed. A copy of Recall R20AM is attached. Your buses affected by Recall R20AM are identified by Blue Bird body number and VIN under Section 2 on the enclosed cover sheet.

If this is the first time you received notification of Recall R20AM, please read the enclosed notification carefully. Recall R20AM must be completed, as soon as possible. To correct this noncompliance, seat barriers positioned immediately behind an integrated 3-point driver seat must have a reinforced construction on all buses and utilize a reinforcing bracket under the floor attached to the frame rail on certain Vision and All American buses. **A visual inspection will be required to ensure that the proper reinforced barrier and barrier-reinforcing bracket are installed.** If the correct components are not in place, the barrier will be replaced and the barrier-reinforcing bracket will be installed. Blue Bird will provide the affected dealers and owners with instructions regarding this recall remedy. Parts are currently.

Blue Bird will reimburse the labor cost of the repairs related to this recall at no cost to you the vehicle owner. The standard repair time (SRT) to accomplish these repairs in accordance with the recall installation procedure is outlined below with the repair options and allowable labor time per bus.

Repair Options and allowable labor times for this campaign:

Repair A (Barrier Inspection):

- Inspect to determine if the barrier or reinforcing brackets below the floor need to be replaced, per attached instructions:
 - 0.1 hour 6 minutes)

Repair B (Barrier Replacement):

- Time to replace barrier, per attached instructions:
 - 0.6 hour (36 minutes)

Repair C (Below Floor Bracket - Vision Only):

- Time to install barrier reinforcing bracket, per attached instructions:
 - 0.50 hours (30 minutes)

Parts to complete Recall R20AM can be obtained from your local Blue Bird Dealer or Blue Bird Recall Administration via e-mail at campaignparts@blue-bird.com or by returning the yellow cover sheet to Blue Bird in the pink self-addressed, postage prepaid envelope to receive parts at no charge. You should retain a copy of the reply sheet for your records. Be sure to provide a valid shipping address as UPS does not deliver to post office boxes. Parts are currently available.



BLUE BIRD

Blue Bird Body Company

Page 2

R20AM

If you have already had R20AM performed on your affected buses, please complete and mail the enclosed recall yellow coversheet to us in the enclosed postage paid pink reply envelope so we may update our recall records. Be sure the reply sheet is filled out properly.

Questions regarding this recall campaign should be directed to lisa.hancock@blue-bird.com

Thank you for your prompt attention to this matter.

Sincerely,

Lisa Hancock

Corporate Recall Administrator

Blue Bird Corporation

402 Blue Bird Blvd, Fort Valley, Georgia 31030

Phone 478.822.2242

lisa.hancock@blue-bird.com



R20AM

IMPORTANT SAFETY RECALL NOTICE
NHTSA Recall Number: 20V-125 School Bus

DATE: April 22, 2020

SUBJECT: FMVSS 222 Noncompliance Seat Barrier Install Behind Driver Seat Integrated 3-Point Seatbelt

Dear Blue Bird Owner:

This notice is sent to you in accordance with the requirements of the National Traffic and Motor Vehicle Safety Act.

This important safety recall notice applies to your bus(es) identified by both Blue Bird Body Number and Vehicle Identification Number (VIN) on the enclosed yellow cover sheet. If you no longer own the subject bus(es), please complete the appropriate section of the yellow coversheet and return to Blue Bird in the enclosed pink postage prepaid envelope.

Blue Bird Body Company is voluntarily recalling certain model year 2008 to 2021 Blue Bird Vision School Buses manufactured from February 28, 2007 through January 18, 2020 and certain model year 2008 to 2021 All American School Buses manufactured from September 26, 2007 through December 21, 2019. On the subject buses, it has been determined that certain Blue Bird buses may fail to conform to the Federal Motor Vehicle Safety Standard Number 222 "School Bus Passenger Seating and Crash Protection" requirements for the seat barrier behind the driver seat with integrated 3-point seat belt. Subject buses may fail to meet the FMVSS 222 Barrier performance forward (S5.2.3) requirements. Blue Bird must conduct a recall to correct this noncompliance. The barrier on subject buses must be inspected and replaced according to the Blue Bird recall instructions, if found to be incorrect. A secondary inspection will have to be conducted on certain Vision buses to determine the presence of the reinforcing bracket below the floor. Blue Bird evaluated the risk to motor vehicle safety related to this noncompliance and determined that there is a potential for injury to the occupant seated behind the barrier in the event of a crash.

To correct this noncompliance, seat barriers positioned immediately behind an integrated 3-point driver seat must have a reinforced construction on all buses and utilize a reinforcing bracket under the floor attached to the frame rail on certain Vision and All American buses. A visual inspection will be required to ensure that the proper reinforced barrier and barrier-reinforcing bracket are installed. If the correct components are not in place, the barrier will be replaced and the barrier-reinforcing bracket will be installed. Blue Bird will provide the affected dealers and owners with instructions regarding this recall remedy. Parts are anticipated to be available at the end of April.

Blue Bird will reimburse the labor cost of the repairs related to this recall at no cost to you the vehicle owner. The standard repair time (SRT) to accomplish these repairs in accordance with the recall installation procedure is outlined below with the repair options and allowable labor time per bus.

Repair Options and allowable labor times for this campaign:

Repair A (Barrier Inspection):

- Inspect to determine if the barrier or reinforcing brackets below the floor need to be replaced, per attached instructions:
 - 0.1 hour (6 minutes)

Repair B (Barrier Replacement):

- Time to replace barrier, per attached instructions:
 - 0.6 hour (36 minutes)

Repair C (Below Floor Bracket - Vision Only):

- Time to install barrier reinforcing bracket, per attached instructions:
 - 0.50 hours (30 minutes)



BLUE BIRD

Blue Bird Body Company

Page 2

R20AM

Parts to complete Recall R20AM can be obtained from your local Blue Bird Dealer or Blue Bird Recall Administration via e-mail at campaignparts@blue-bird.com or by returning the yellow cover sheet to Blue Bird in the pink self-addressed, postage prepaid envelope to receive parts at no charge. You should retain a copy of the reply sheet for your records. Be sure to provide a valid shipping address as UPS does not deliver to post office boxes. Parts are anticipated to be available at the end of April.

Federal law requires that any vehicle lessor receiving this recall notice must forward a copy of this notice to the lessee within ten days.

If the modifications directed by this notification were performed on your bus prior to the receipt of this recall notification, attach a copy of the work order/invoice. Mail the documents in the pink self-addressed postage prepaid envelope included with the pink reply sheet to Blue Bird for warranty consideration. Reimbursements will be made in accordance with the requirements of the National Highway Transportation Safety Act, Title 49 Code of Federal Regulations, Parts 573 and 577.

Please contact your local Blue Bird Dealer with any questions regarding this recall campaign.

If Blue Bird Body Company should fail to or is unable to remedy this condition without charge to you, you may contact:

**ADMINISTRATOR
NATIONAL HIGHWAY TRAFFIC SAFETY ADMINISTRATION
1200 NEW JERSEY AVENUE, SE
WASHINGTON, D.C. 20590**

Or, you may call The National Highway Traffic Safety Administration toll free at:
1-888-327-4236 TTY 1-800-424-9153 or go to: <http://www.safercar.gov>



RECALL

R20AM Seat Barrier Install Behind Driver Seat Integrated 3-Point Seatbelt

Models Affected: 2008 through 2021 Model Year All American and Vision Buses

Issue: Certain buses may fail to conform to the Federal Motor Vehicle Safety Standard Number 222 "School Bus Passenger Seating and Crash Protection" requirements for the seat barrier behind the driver seat with integrated 3-point seat belt. The LH front passenger seat barrier may be incorrect and under floor mounting bracket may be incorrect or missing.

Corrective Action: The barrier on subject buses must be inspected and replaced if found to be incorrect and the reinforcing bracket below the floor on Vision buses inspected to determine the correct reinforcing bracket is installed.

Parts/Items Needed: (Based on Inspection and current Barrier Installation)

Item Number	Part Number	Description	Quantity
1	00116262	FRAME ASSY, BAR,30, HBK, GM, LH, SOLID INSERT	1 (If Needed)
	00116263	FRAME ASSY, BAR,36, HBK, GM, LH, SOLID INSERT	1 (If Needed)
	00116264	FRAME ASSY, BAR,39, HBK, GM, LH, SOLID INSERT	1 (If Needed)
	00116265	FRAME ASSY, BAR,45, HBK, GM, LH, SOLID INSERT	1 (If Needed)
2	KIT A	KIT-39" Below Floor Bracket-Non-Gas	1 (If Needed)
	000111381	BRACKET ASSY, REINF, BARRIER LEG, IN,39 BBCV	1
	00111413	BRACKET ASSY, REINF, BARRIER LEG, OUTER BBCV	1
	00002811	NUT, HEX HD, 5/16-18.FLG, LK, NYL INS, YEL ZN DI	2
	01686484	CAPSCREW, HEX HD,5/16-18 X 3 1/2, SS, FUL THRD	2
	00803239	CAPSCREW, HEX HD,1/2-13 X1 1/2, GR8, YELZNDICH	4
	KIT B	KIT-39" Below Floor Bracket-Gas	1 (If Needed)
	10051367	BRACKET ASSY, REINF, BARRIER LEG, INNER,39 BBCV GAS	1
	00111413	BRACKET ASSY, REINF, BARRIER LEG, OUTER BBCV	1
	00002811	NUT, HEX HD, 5/16-18.FLG, LK, NYL INS, YEL ZN DI	2
	01686484	CAPSCREW, HEX HD,5/16-18 X 3 1/2, SS, FUL THRD	2
	00803239	CAPSCREW, HEX HD,1/2-13 X1 1/2, GR8, YELZNDICH	4
	KIT C	KIT-45" Below Floor Bracket-Non-Gas	1 (If Needed)
	00112323	BRACKET ASSY, REINF, BAR LEG, INNER,45 BBCV	1
	00111413	BRACKET ASSY, REINF, BARRIER LEG, OUTER BBCV	1
	01686484	CAPSCREW, HEX HD,5/16-18 X 3 1/2, SS, FUL THRD	2
	00002811	NUT, HEX HD, 5/16-18.FLG, LK, NYL INS, YEL ZN DI	2
	00803239	CAPSCREW, HEX HD,1/2-13 X1 1/2, GR8, YELZNDICH	4



RECALL

R20AM Seat Barrier Install Behind Driver Seat Integrated 3-Point Seatbelt

WARNING: Always follow all Federal, State, Local and Shop safety standards and use proper safety equipment, and thoroughly read and understand all instructions before performing these procedures. Park bus on level surface, apply parking brake, turn off ignition key, and chock wheels.

Inspection:

Barrier (All American and Vision)

Ensure the correct barrier is installed. Do this by visually inspecting the underside of the barrier frame at the wall bracket. If the inside frame tubing is hollow it is the incorrect barrier and will need to be changed. If the inside barrier tubing is solid the barrier is correct as the reinforcement has been welded into place. **See Photo (1)**

Barrier Floor Reinforcement Bracket (Vision Buses Only)

Inspect to see if the correct barrier under floor reinforcement bracket is installed.

1. Going underneath the unit ensure the correct reinforcement brackets are installed. All Vision buses, *with* integrated drivers seat belt, should have the underfloor brackets. **(Barrier mounting bolts must go through the under-floor reinforcement brackets).**
2. **If no bracket is installed, install the proper Bracket kit per the parts list and instructions provided below.**
3. If the brackets are installed, verify the following: (See Images below).
 - a. Gasoline buses should have bracket which has a shorter flange.
 - i. 10051367 (BRACKET ASSY, REINF, BARRIER LEG, INNER,39 BBCV GAS)
 - b. All other buses should have one of the following brackets depending on the barrier size in the bus.
 - i. 00112323 BRACKET ASSY, REINF, BARRIER LEG, INNER,45 BBCV
 - ii. 00111381 BRACKET ASSY, REINF, BARRIER LEG, INNER,39 BBCV
4. If a bracket is installed but is wrong, you only need to replace the one part, per the part numbers listed.

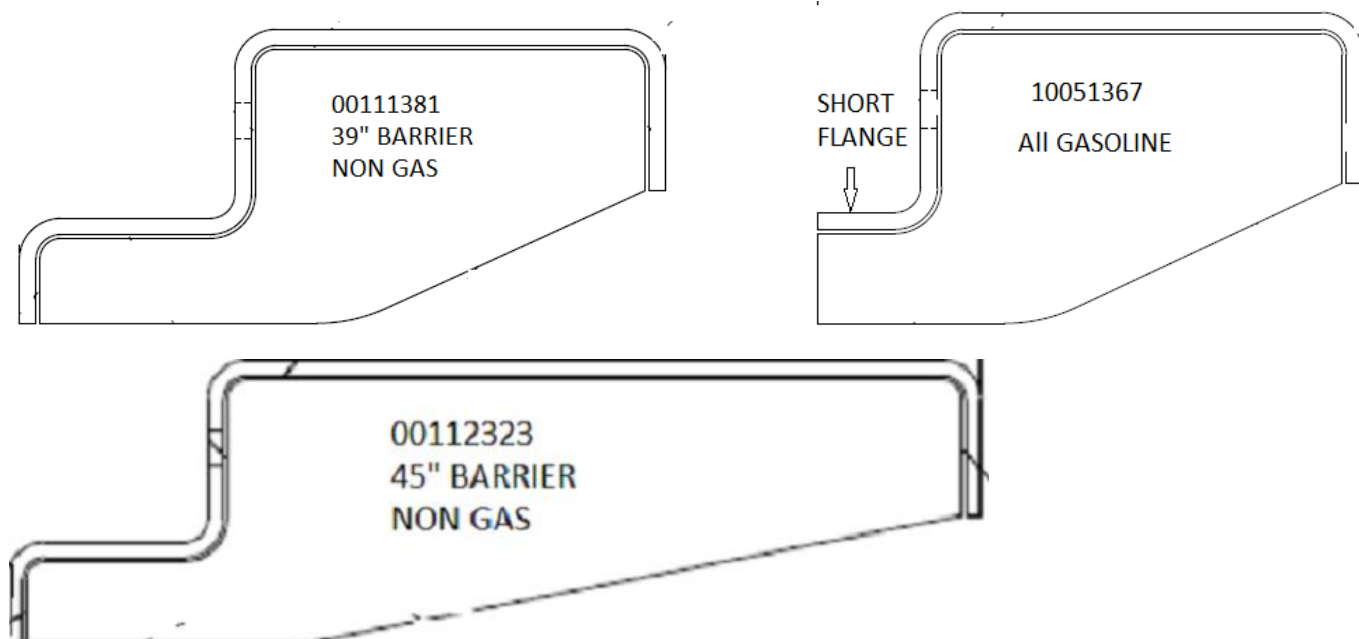


Photo 1

Instructions:

Reinforced Barrier

Removal of Incorrect Barrier

1. Remove and retain the two fasteners that secure the barrier leg to the floor. See photo (2)
2. If a modesty panel is installed, remove and retain all the fasteners that secure it to floor barrier and gusset. See photo (2)
3. Remove the modesty panel from the work area.
4. Remove and retain the three bolts and nuts that secure the barrier frame to the gusset.
5. Remove the barrier from the bus and place on a clean work surface.
6. If the unit did not have a modesty panel, remove and retain the fasteners securing the barrier trim to expose the staples for the barrier cover.
7. Remove all the staples that secure the barrier cover to the tack strip.
Note: It is important not to damage the barrier cover, as it will be used on the replacement barrier.
8. Once all the staples are removed from the barrier cover, remove the barrier cover and padding from the barrier frame.
9. Remove the tack strip from the barrier frame by removing the staples on the opposing side of the barrier frame. Photo (3)
10. Remove the incorrect barrier frame from the work area.



Photo 2



Photo 3

Installation of Reinforced Barrier Frame

1. Using 7/32" drill bit, back drill three holes in the reinforced barrier frame where the tack strip is to be mounted. See Photo (4)
2. Place the tack strip into place on the barrier frame.
3. Using the three 7/32" holes that were drilled secure the tack strip to the barrier frame using three 3/4" #10 screws.
4. Place the barrier padding and cover onto the barrier frame.
5. Pull the bottom rear of the barrier cover around to the tack strip and staple the cover to the tack strip.
6. Pull the front of the cover down to the tack strip and staple the cover to the tack strip. **Note:** Keep the staple line towards the bottom of the tack strip so that the staples will be covered by the barrier trim or modesty panel. See Photo (5)
7. If the unit was not equipped with a modesty panel, install the barrier trim using the fasteners from the removal process.
8. Place the barrier inside the bus.
9. Install the three bolts that secure the barrier frame to the gusset and hand tighten the nuts.
10. Insert the correct bolts for the barrier leg through the barrier leg, floor, and reinforcement bracket. If a new reinforcement bracket is required under the floor, install it before proceeding. The holes may be back drilled using an 11/32" drill bit, if needed.
11. Install the nuts to the barrier leg bolts and torque 12- 15 ft/lbs.
12. Torque the bolts that secure the barrier frame to the gusset to 18-20 ft/lbs.
13. Install the modesty panel to the barrier, floor, and wall using the fasteners from the removal process.



Photo 4



Photo 5

Barrier Under Floor Reinforcement Bracket Installation

1. Remove the two bolts that secure the barrier leg to the floor. See Photo (2)
2. Place the inside and outside reinforcement brackets into the proper location using the existing holes for the barrier leg, as referenced.
3. Secure the inside and outside reinforcement brackets into place using the 1/2-13 X 1 1/2, GR8, bolts included in the kit, (Torque to 70 ft/lbs.) See Photo (6) OR (7) DEPENDING ON YOUR VEHICLE
4. Once both reinforcement brackets are in place back drill the barrier leg holes using a 11/32" drill bit. (Under floor brackets must be located correctly, when back drilled for barrier bolts to go into them).
5. Install the barrier leg 5/16 bolts and nuts included in the kit and torque to 12-15 ft./lbs.

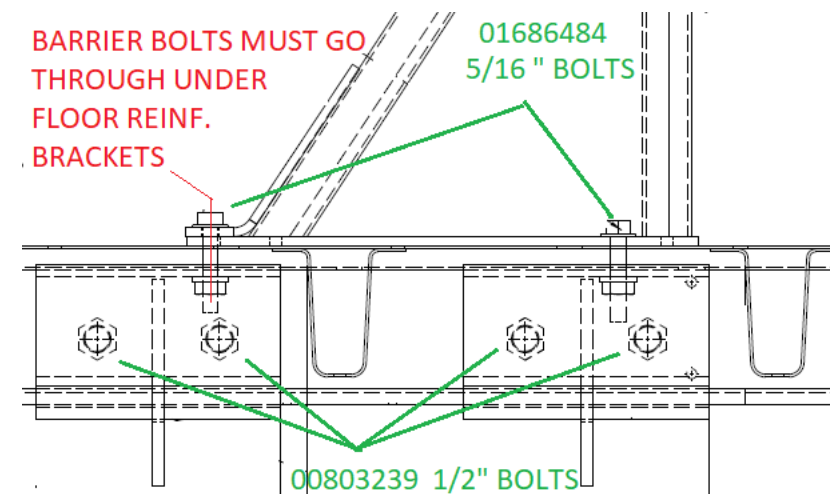
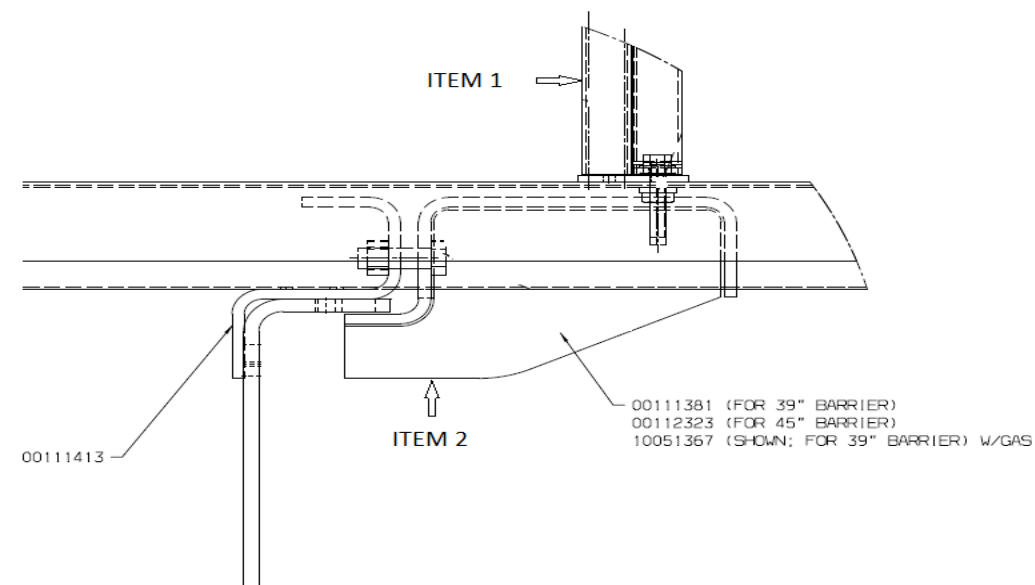


Photo 6

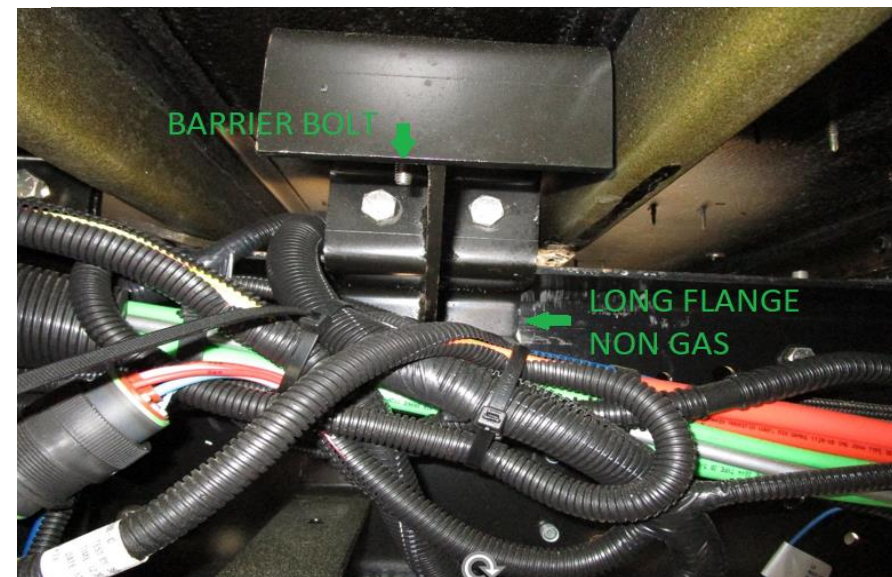


Photo 7