



INSTRUCTIONS TO PERFORM RECALL CAMPAIGN 163

Models Affected 2012 - 2021 Era 170X

Tools and Parts Required Torque Wrench
Box End Torque Extender – 11/16" (2" in length)
Recall Repair Kit # - RC7648-21-763
Fine Thread Serrated Flange Nut

NOTE: Only use the parts supplied in the recall kit to complete this repair.

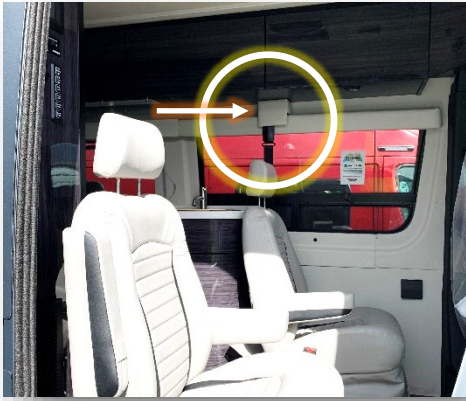




INSTRUCTIONS TO PERFORM RECALL CAMPAIGN 163

Unit Prep

- Locate the driver side companion seat and bracket where the shoulder belt attaches, just under the overhead cabinet.



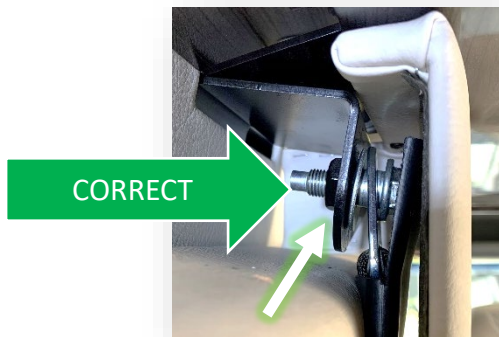
Recall Remedy

- Using a torque wrench with the 11/16" box end torque extender, install the serrated flange nut supplied in the recall kit.



Component Identification

Inspect the assembly and attachment. The correct assembly will have a weld nut attached on the outside surface.



****Apply torque to the nut****

Using the following chart, apply the corresponding torque value which matches your wrench size.

Torque Wrench Length (in) from center of post to center of grip	Torque Value (ft/lbs)
14	48
15	48
16	47
17	47
18	47
19	46
20	46
21	46
22	46
23	46
24	46