

June 5, 2020

Version 1

Safety Recall: 2019 Clarity Rear Seat Belt Inspection

AFFECTED VEHICLES

Year	Model	Trim	VIN Range
2019	Clarity Electric	ALL	Check the iN VIN status for eligibility.
	Clarity Fuel Cell		Check the iN VIN status for eligibility.
	Clarity Plug-In Hybrid		Check the iN VIN status for eligibility.

BACKGROUND

When quickly extending the rear seat belt(s), the rear seat belt retractor may not lock. The retractor mechanism within the rear seat belt(s) does not allow the spring to properly engage the locking gear.

CUSTOMER NOTIFICATION

Owners of affected vehicles will be sent a notification of this campaign.

Do an iN VIN status inquiry to make sure the vehicle is shown as eligible.

Some vehicles affected by this campaign may be in your new or used vehicle inventory. Repair these vehicles before they are sold.

CORRECTIVE ACTION

Inspect the seat belt tag to confirm the lot ID number, then replace the seat belt assembly(s) as needed.

CUSTOMER INFORMATION: The information in this bulletin is intended for use only by skilled technicians who have the proper tools, equipment, and training to correctly and safely maintain your vehicle. These procedures should not be attempted by "do-it-yourselfers," and you should not assume this bulletin applies to your vehicle, or that your vehicle has the condition described. To determine whether this information applies, contact an authorized Honda automobile dealer.

PARTS INFORMATION

NOTE

These seat belt kits are controlled parts. To order, send an e-mail request to Part_Release@ahm.honda.com. In this e-mail you will need to provide a clear image of the vehicle VIN and the seat belt lot ID tag, along with the requested information shown in the sample e-mail below. Use this service bulletin number and the VIN in the subject line of the e-mail.

To...	Part_Release@ahm.honda.com
Cc...	
Subject	Service Bulletin 20-038 Clarity (VIN)

VIN: (Clarity VIN)
Color: (Seat Belt Color)
Part Number: (Seat Belt Part Number)
Dealer Number: (Your Dealer Number)
Pictures: (Images of the VIN and the seat belt lot ID tag)

Clarity Electric

Part Name	Part Number	Quantity
Right Rear Seat Belt Kit *NH900L* (Black)	06824-TRT-305ZB	1
Left Rear Seat Belt Kit *NH900L* (Black)	06828-TRT-305ZB	1
Right Rear Seat Belt Kit *NH860L* (Light Gray)	06824-TRT-308ZC	1
Left Rear Seat Belt Kit *NH860L* (Light Gray)	06828-TRT-308ZD	1
Center Rear Seat Belt Kit *NH860L* (Light Gray)	06825-TRT-307ZC	1

Clarity Fuel Cell

Part Name	Part Number	Quantity
Right Rear Seat Belt Kit *NH900L* (Black)	06824-TRT-305ZB	1
Left Rear Seat Belt Kit *NH900L* (Black)	06828-TRT-305ZB	1
Right Rear Seat Belt Kit *NH556L* (Cream)	06824-TRT-306ZC	1
Left Rear Seat Belt Kit *NH556L* (Cream)	06828-TRT-306ZC	1
Center Rear Seat Belt Kit *NH556L* (Cream)	06825-TRT-305ZC	1

Clarity Plug-In Hybrid

Part Name	Part Number	Quantity
Right Rear Seat Belt Kit *NH900L* (Black)	06824-TRT-305ZB	1
Left Rear Seat Belt Kit *NH900L* (Black)	06828-TRT-305ZB	1
Right Rear Seat Belt Kit *YR436L* (Beige)	06824-TRT-307ZA	1
Left Rear Seat Belt Kit *YR436L* (Beige)	06828-TRT-307ZA	1
Center Rear Seat Belt Kit *YR436L* (Beige)	06825-TRT-306ZA	1

WARRANTY CLAIM INFORMATION

NOTES

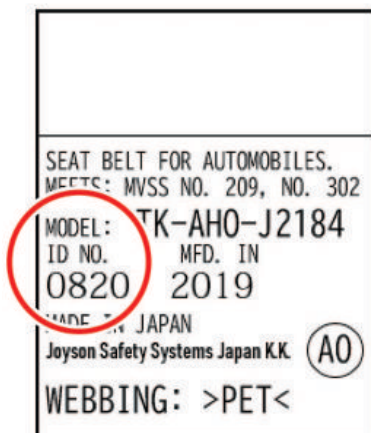
- Rear seat belt tag inspection can be done on the service drive by the service advisor or a porter.
- Template IDs were not included because there are many variations in the repair procedure. Manually enter the warranty information claim.

Operation Number	Description	Flat Rate Time	Defect Code	Symptom Code	Failed Part Number
8555A4	Inspect the rear seat belt tags. (No replacement required)	0.2 hr	6SY00	Z7L00	06824-TRT-305ZA
8551F0	Inspect the rear seat belt tags, and replace one rear seat belt.	0.8 hr	6SY00	Z7L00	06824-TRT-305ZA
8551F0	Inspect the rear seat belt tags, and replace one rear seat belt.	0.8 hr	6SY00	Z7L00	06824-TRT-305ZA
A	Replace one additional seat belt.	0.1 hr			
8551F0	Inspect the rear seat belt tags, and replace one rear seat belt.	0.8 hr	6SY00	Z7L00	06824-TRT-305ZA
B	Replace two additional seat belts.	0.2 hr			

INSPECTION PROCEDURE

Inspect each rear seat belt tag. Refer to the photos for tag locations. If the tag shows a Lot ID number listed in the table on page 5, replace the seat belt assembly.

TAG INFORMATION:



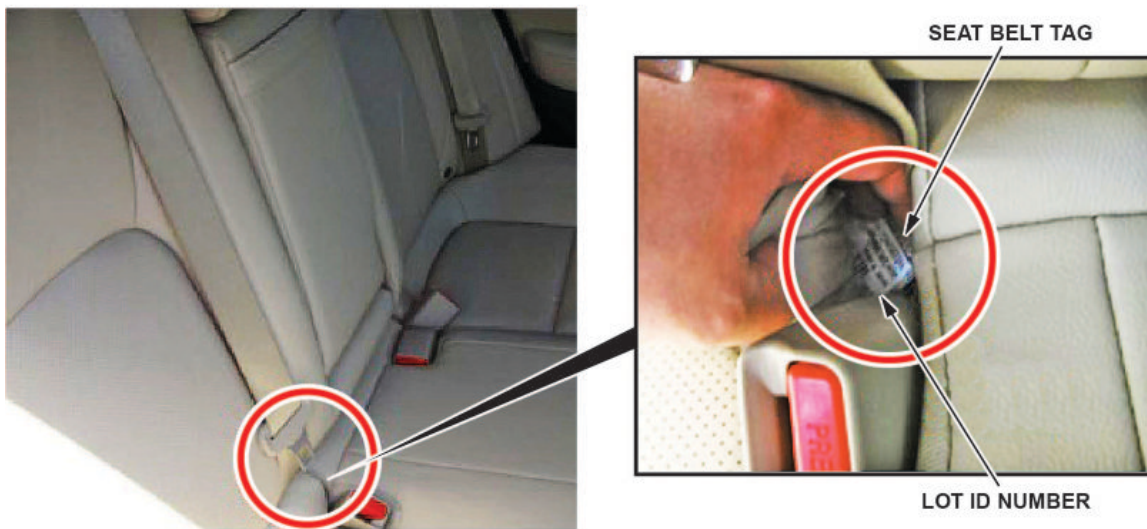
Right Rear Seat Belt

RIGHT REAR:



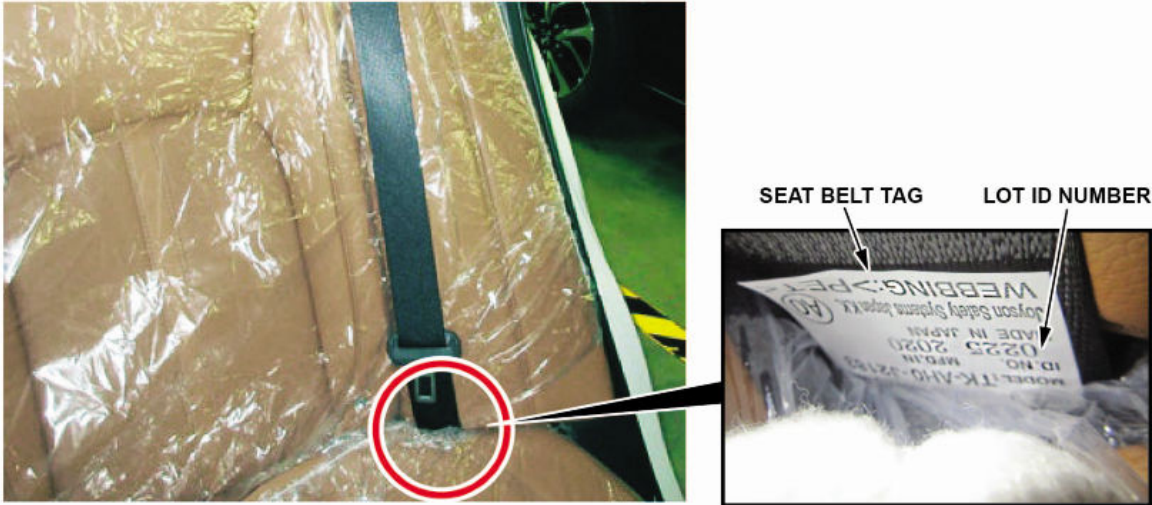
Center Rear Seat Belt

CENTER REAR:



Left Rear Seat Belt

LEFT REAR:

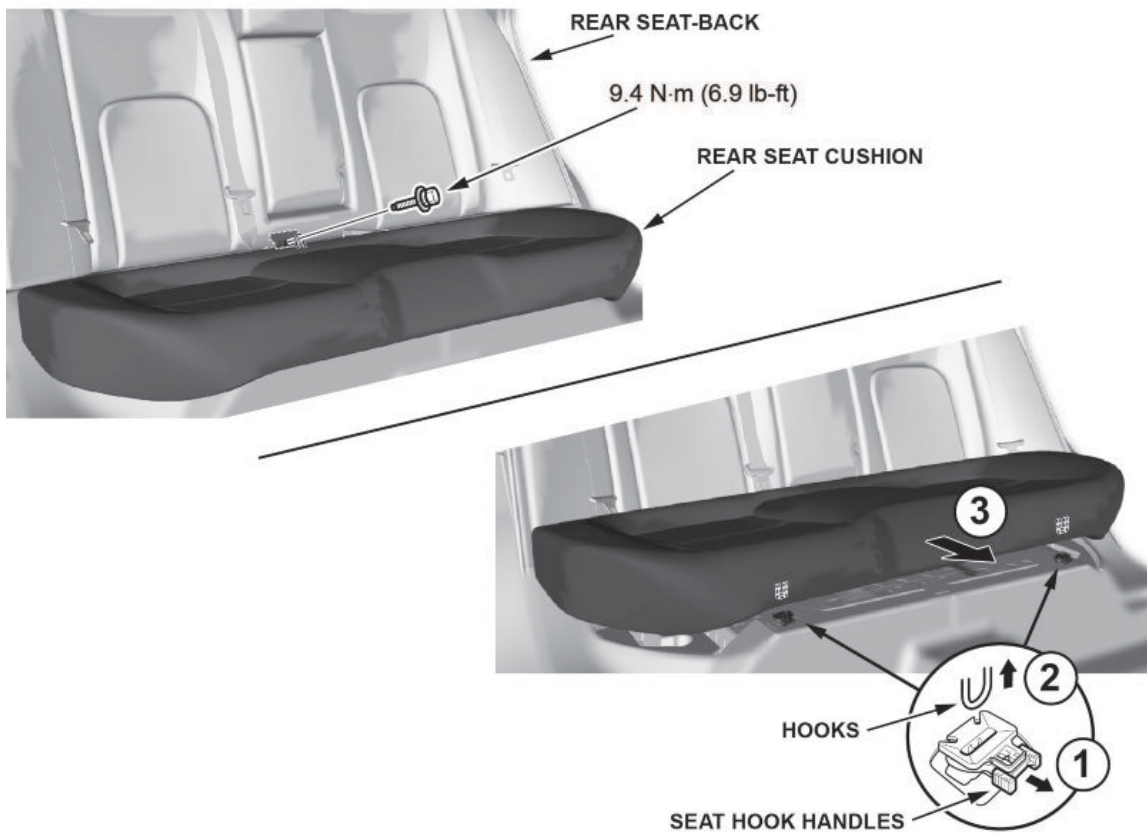


Determine the interior color code for the vehicle. If the four-digit Lot ID No. matches one of the codes listed in the table below, replace that seat belt.

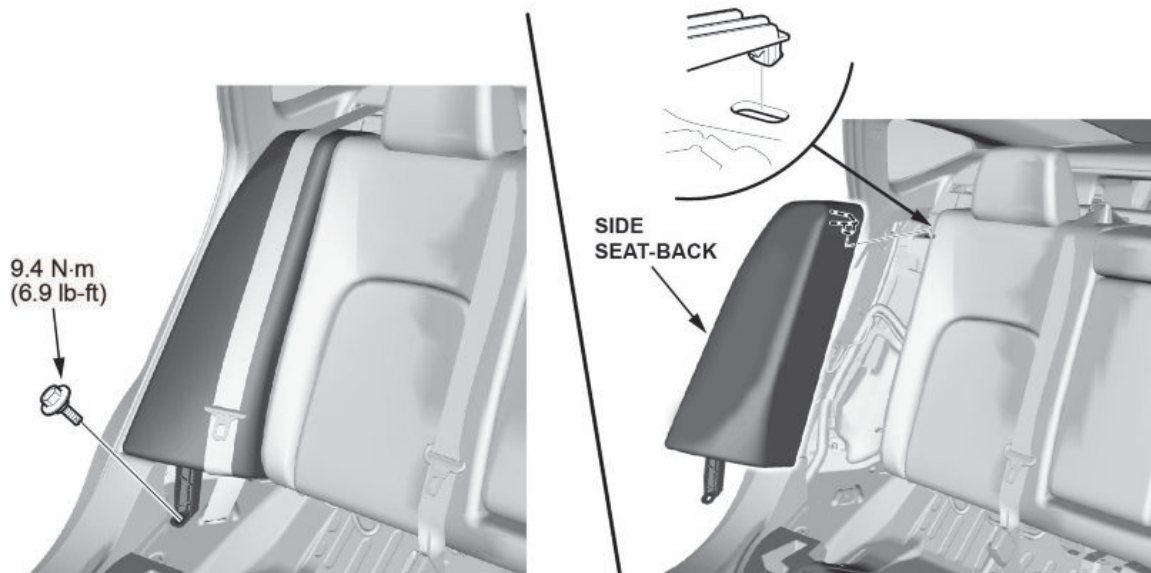
Location	Color Code	Model Application	Lot ID Number
Right Rear	NH900L (Black)	All	0820
	NH556L (Cream)	Fuel Cell Only	0820
	YR436L (Beige)	Plug-In Hybrid Only	0820 or 0821
	NH860L (Light Gray)	Electric Only	0821
Left Rear	NH900L (Black)	All	0820
	NH556L (Cream)	Fuel Cell Only	0820
	YR436L (Beige)	Plug-In Hybrid Only	0820 or 0821
	NH860L (Light Gray)	Electric Only	0821
Center Rear	NH556L (Cream)	Fuel Cell Only	0820
	YR436L (Beige)	Plug-In Hybrid Only	0820
	NH860L (Light Gray)	Electric Only	0821

REPAIR PROCEDURE

1. Remove the rear seat cushion.



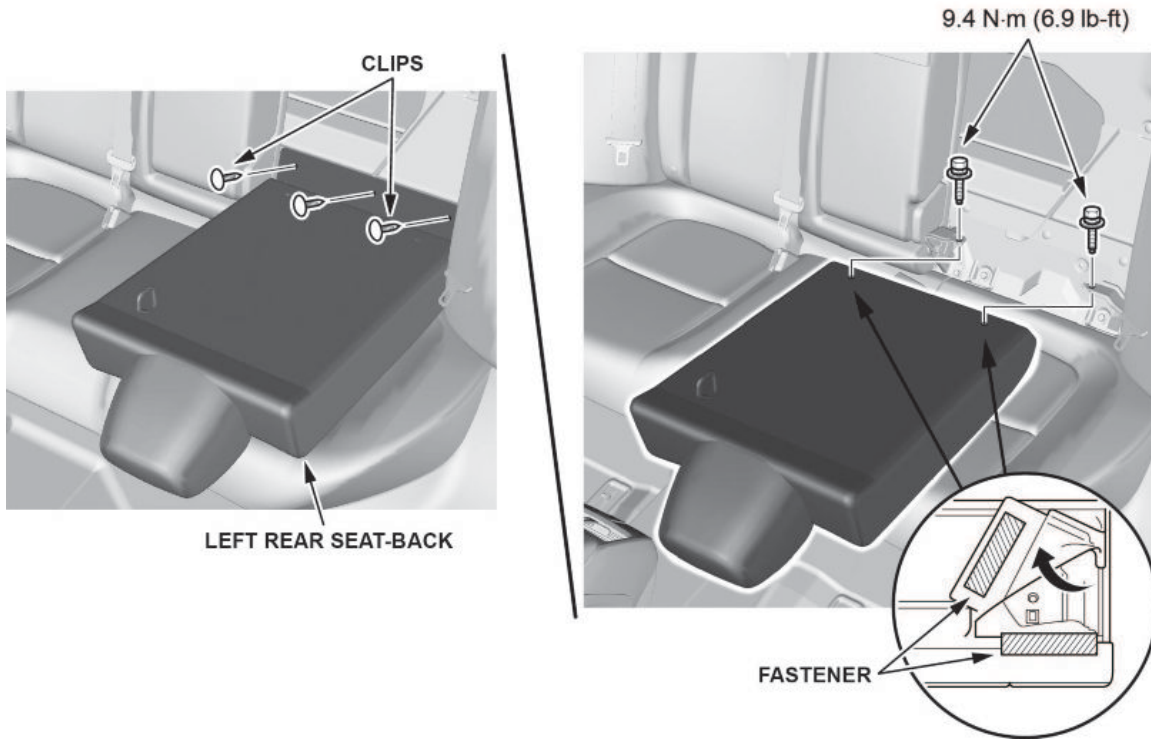
2. Remove the left and right side seat-backs.



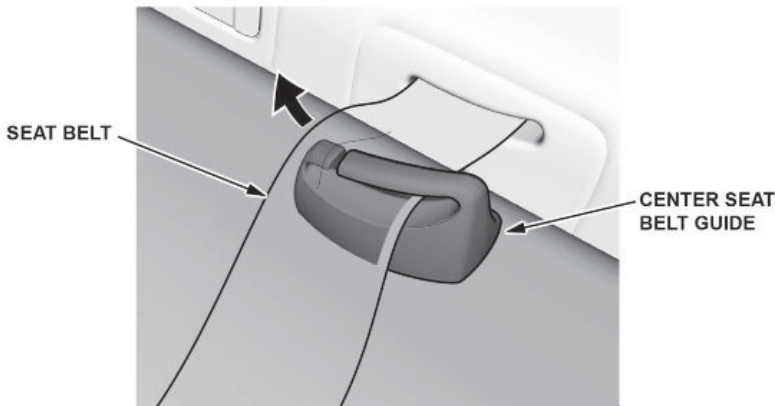
3. Remove the rear seat-back.

Electric and Plug-In Hybrid

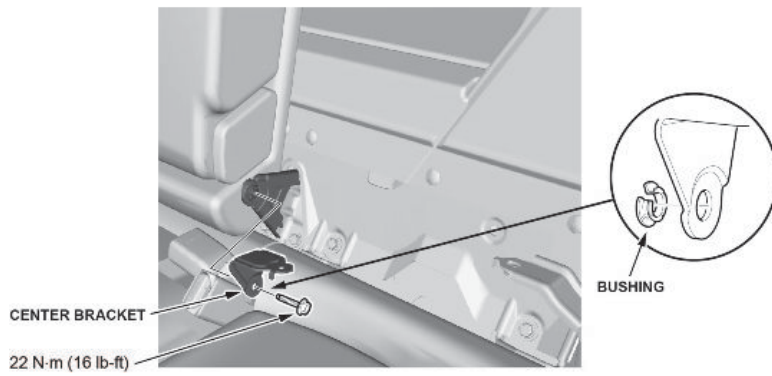
3.1. Fold down the left rear seat-back, release the fasteners, remove the bolts, then remove the left rear seat-back.



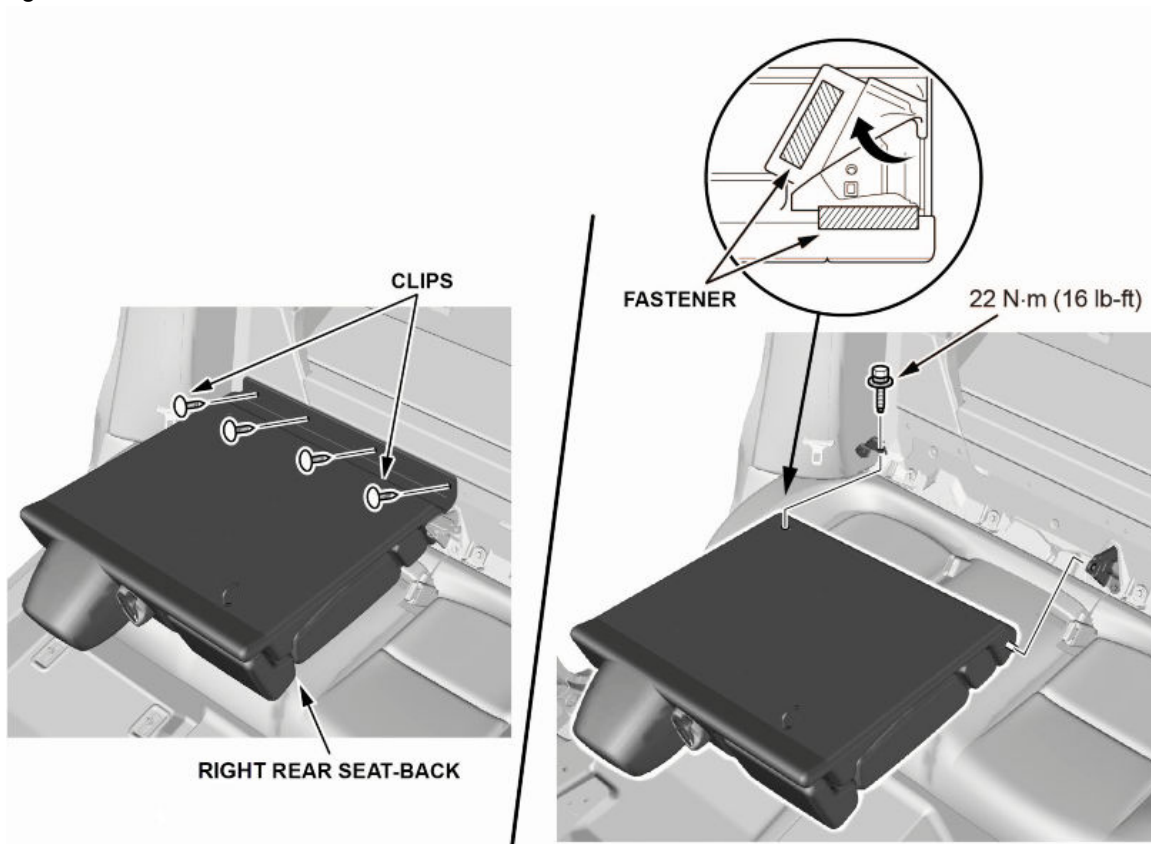
3.2. Pull out the center seat belt through the slit in the center seat belt guide.



3.3. Remove the center bracket.

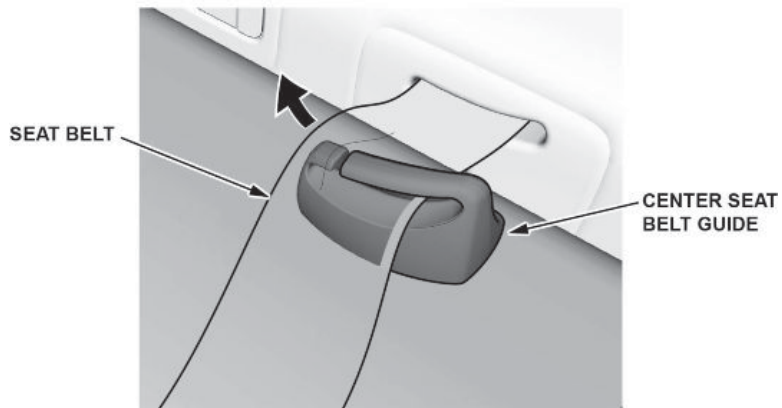


3.4. Fold down the right rear seat-back, remove the clips, release the fasteners, remove the bolt, then remove the right rear seat-back.

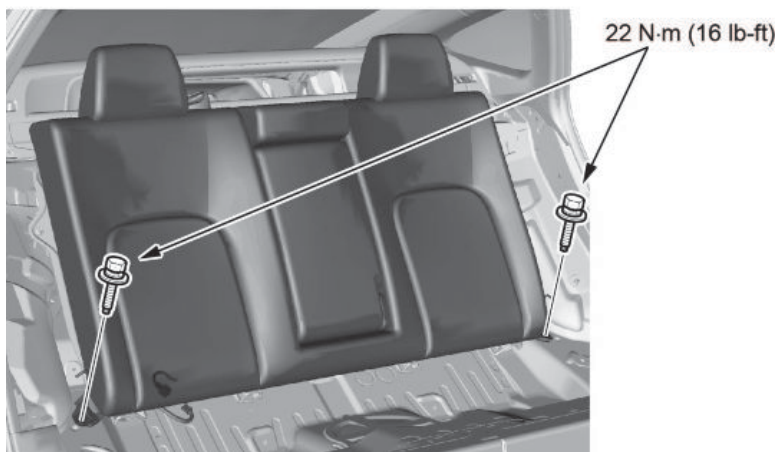


Fuel Cell

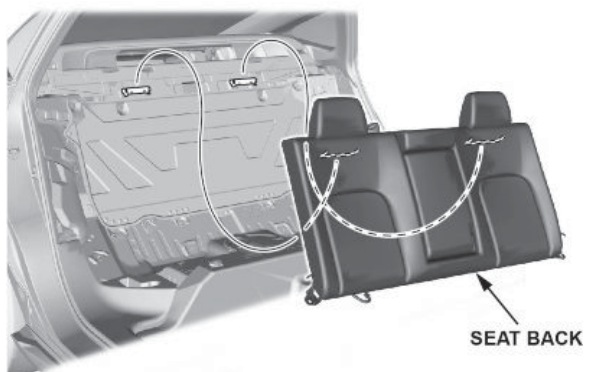
3.1. Pull out the center seat belt through the slit in the center seat belt guide.



3.2. Remove the bolts.



3.3. Remove the rear seat-back.



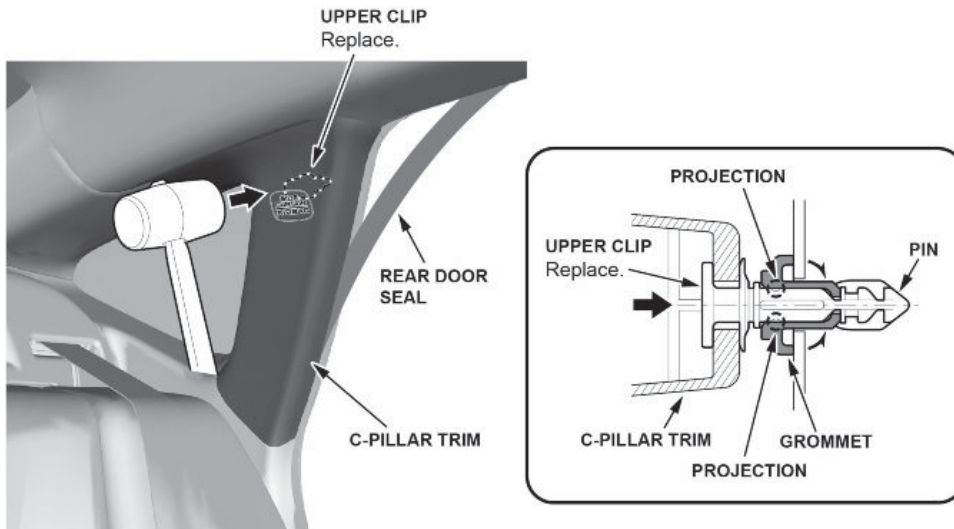
4. Remove the left and right C-pillar Trim.

4.1. Pull back the rear door seal as needed.

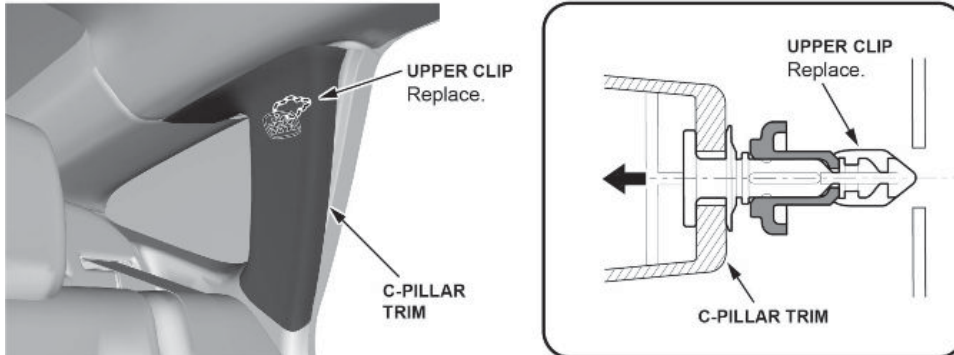
4.2. Hit the upper area of the C-pillar trim with a rubber mallet, and push the upper clip against the body.

NOTES

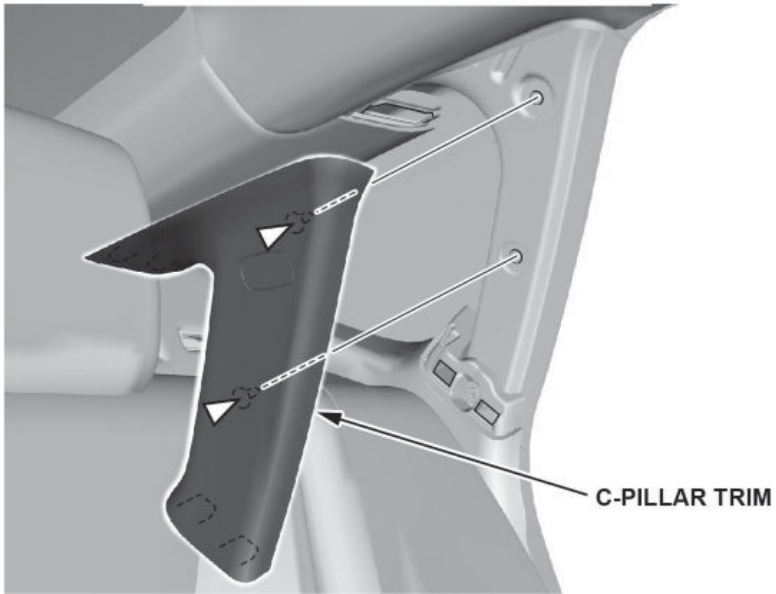
- Hitting the upper clip breaks the projections on the pin and pushes it into the grommet on the body.
- When installing, make sure to replace the upper clip with a new one.



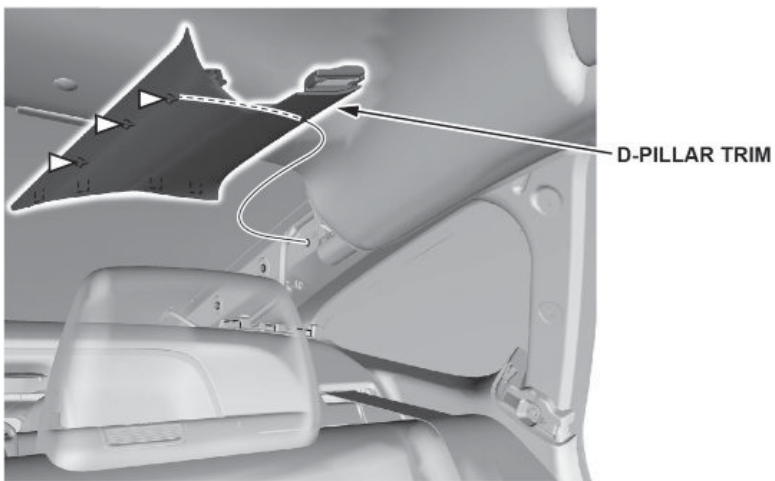
4.3. Pull back the C-pillar trim, then remove the upper clip from the body.



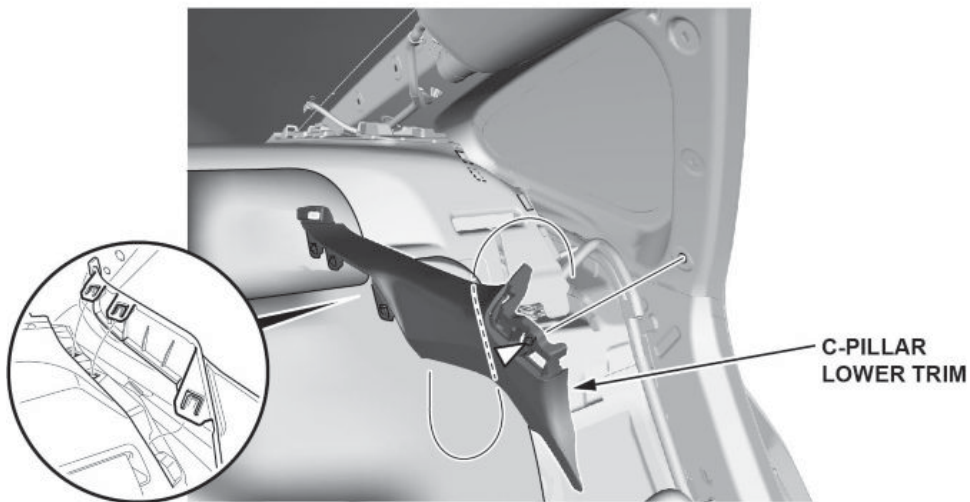
4.4. Remove the C-pillar trim.



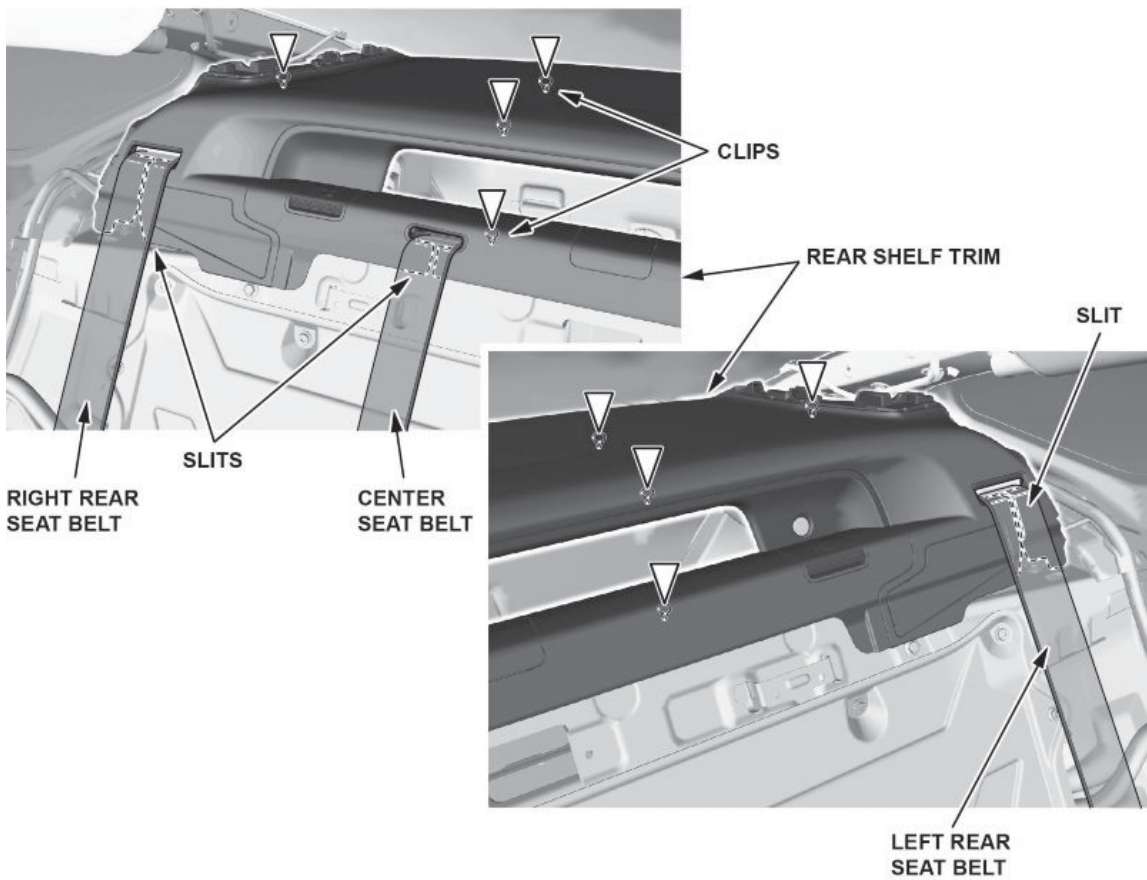
5. Remove the left and right D-pillar trim.



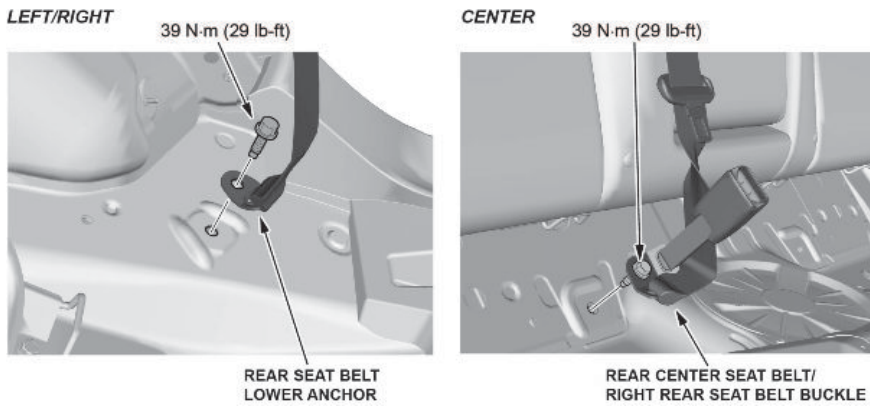
6. Remove the left and right C-pillar lower trim.



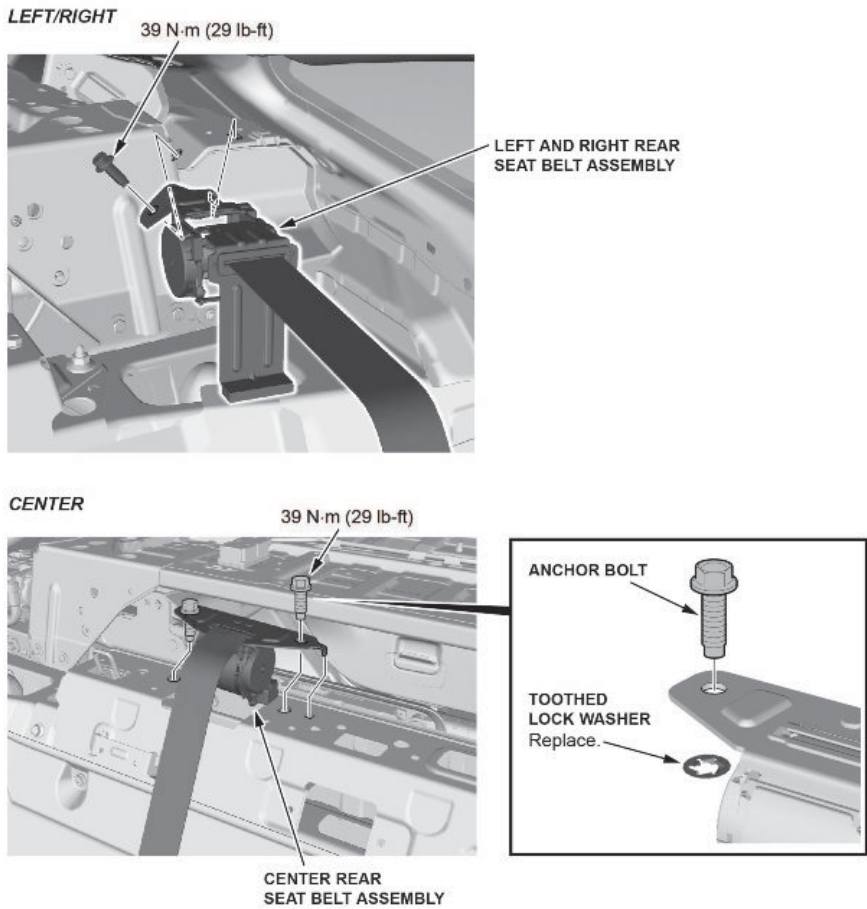
7. Remove the rear shelf trim.



8. Remove the rear seat belt lower anchor bolt.



9. Remove the rear seat belt assembly.



10. Replace the seat belt assembly using the correct kit from the parts table.

11. Install all of the removed parts in the reverse order of removal, replace must-replace clips, and torque all fasteners to their specified values. Refer to the service information.

END