



FIELD KIT

Vermeer Corporation

Environmental
Pella, IA 50219 USA

FIELD CAMPAIGN KIT#	IK003940	DATE:	16 July 2020
<i>For Dealer Reference: Service Bulletin #SVC2020-095</i>			
BC1000XL Wheel and Tire Assembly Replacement Kit			

CAMPAIGN TYPE:	Mandatory-Product Safety Dealer Installation Only
CAMPAIGN CATEGORY:	Kit and Bulletin

MACHINE/ ATTACHMENT MODEL(S):	Serial Numbers		Kit Version
	Included	Excluded	
BC1000XL	See attached listing on page 3 of this bulletin for specific VIN and Serial/Unit numbers ONLY includes 7000 lb (3175 kg) electric brake axle	NONE Does not include: <ul style="list-style-type: none"> • 5200 lb (2360 kg) electric brake axle • 7000 lb (3175 kg) electric brake axle 	IK01: Solid Steel Wheels 8 on 6 1/2", 5/8" studs; Heavy Duty Tires 245/75R17.5 LRJ 18 ply; safety sign (English text); tire placard; and English supplemental manual.

<p>BC1000XL</p>	<p>NONE (Current location of machines indicate IK02 is not required.) ONLY includes 7000 lb (3175 kg) electric brake axle</p>	<p>See attached listing on page 3 of this bulletin for specific VIN and Serial/Unit numbers Does not include:</p> <ul style="list-style-type: none"> • 5200 lb (2360 kg) electric brake axle • 7000 lb (3175 kg) electric brake axle 	<p>IK02: Solid Steel Wheels 8 on 6 1/2", 5/8" studs; Heavy Duty Tires 245/75R17.5 LRJ 18 ply; safety sign (no text); tire placard; and English + translated supplemental manual.</p>
<p>BC1000XL Temporary wheel/tire assembly solution (Assembly PN 163769457) previously installed</p>	<p>18666, 19872, 27664, 28255, 28256, 29157, 30635 – 30637 ONLY includes 7000 lb (3175 kg) electric brake axle</p>	<p>NONE Does not include:</p> <ul style="list-style-type: none"> • 5200 lb (2360 kg) electric brake axle • 7000 lb (3175 kg) electric brake axle 	<p>IK03: Safety sign (English text), tire placard; and English supplemental manual.</p>
<p>BC1000XL Temporary wheel/tire assembly solution (Assembly PN 163769457) previously installed</p>	<p>NONE (Current location of machines indicate IK04 is not required.) ONLY includes 7000 lb (3175 kg) electric brake axle</p>	<p>18666, 19872, 27664, 28255, 28256, 29157, 30635 – 30637 Does not include:</p> <ul style="list-style-type: none"> • 5200 lb (2360 kg) electric brake axle • 7000 lb (3175 kg) electric brake axle 	<p>IK04: Safety sign (no text), tire placard; and English + translated supplemental manual.</p>

AFFECTED MACHINES - IK01-3940					
MODEL	VIN	MODEL	VIN	MODEL	VIN
BC1000XL	1VRY11194B1016654	BC1000XL	1VRY11191J1026234	BC1000XL	1VRY11194J1027071
BC1000XL	1VRY11197H1023929	BC1000XL	1VRY11195J1026270	BC1000XL	1VRY11196J1027072
BC1000XL	1VRY11193H1023930	BC1000XL	1VRY11190J1026273	BC1000XL	1VRY11192K1027619
BC1000XL	1VRY11195H1023931	BC1000XL	1VRY11192J1026310	BC1000XL	1VRY11199K1027620
BC1000XL	1VRY11197H1023932	BC1000XL	1VRY11198J1026313	BC1000XL	1VRY11195K1027663
BC1000XL	1VRY11199H1023933	BC1000XL	1VRY11195J1026320	BC1000XL	1VRY11199K1027665
BC1000XL	1VRY11190H1023934	BC1000XL	1VRY11197J1026321	BC1000XL	1VRY11198K1027723
BC1000XL	1VRY1119XH1024301	BC1000XL	1VRY11199J1026322	BC1000XL	1VRY11192K1028088
BC1000XL	1VRY11193H1024303	BC1000XL	1VRY11190J1026323	BC1000XL	1VRY1119XK1028128
BC1000XL	1VRY11195H1024304	BC1000XL	1VRY11192J1026324	BC1000XL	1VRY11191K1028129
BC1000XL	1VRY11199H1024306	BC1000XL	1VRY11194J1026325	BC1000XL	1VRY11199K1028170
BC1000XL	1VRY11190H1024307	BC1000XL	1VRY11195J1026348	BC1000XL	1VRY11190K1028171
BC1000XL	1VRY11196H1024361	BC1000XL	1VRY11197J1026349	BC1000XL	1VRY11191K1028342
BC1000XL	1VRY11191H1025174	BC1000XL	1VRY11193J1026350	BC1000XL	1VRY11198K1028502
BC1000XL	1VRY11193H1025211	BC1000XL	1VRY11195J1026351	BC1000XL	1VRY11197K1028622
BC1000XL	1VRY11195H1025212	BC1000XL	1VRY11199J1026353	BC1000XL	1VRY11196L1029410
BC1000XL	1VRY1119XH1025240	BC1000XL	1VRY11192J1026355	BC1000XL	1VRY11190L1029497
BC1000XL	1VRY11191H1025241	BC1000XL	1VRY11194J1026356	BC1000XL	1VRY11197L1029903
BC1000XL	1VRY11193H1025242	BC1000XL	1VRY11196J1026357	BC1000XL	1VRY11199L1029904
BC1000XL	1VRY11197H1025406	BC1000XL	1VRY11198J1026358	BC1000XL	1VRY11190L1029905
BC1000XL	1VRY11199H1025407	BC1000XL	1VRY11194J1026387	BC1000XL	1VRY11198L1029926
BC1000XL	1VRY11190H1025408	BC1000XL	1VRY11196J1026388	BC1000XL	1VRY1119XL1029927
BC1000XL	1VRY11192H1025409	BC1000XL	1VRY11198J1026389	BC1000XL	1VRY11199L1030308
BC1000XL	1VRY11191J1025410	BC1000XL	1VRY11194J1026390	BC1000XL	1VRY11190L1030634
BC1000XL	1VRY11194J1025806	BC1000XL	1VRY11196J1026391	BC1000XL	1VRY11196L1030640
BC1000XL	1VRY11198J1025808	BC1000XL	1VRY11198J1026392	BC1000XL	1VRY11194L1031544
BC1000XL	1VRY11196J1025810	BC1000XL	1VRY1119XJ1026393		
BC1000XL	1VRY11191J1025813	BC1000XL	1VRY11190J1026399		
BC1000XL	1VRY11195J1025815	BC1000XL	1VRY11196J1026651		
BC1000XL	1VRY11199J1025817	BC1000XL	1VRY11195J1026690		
BC1000XL	1VRY11199J1025820	BC1000XL	1VRY11198J1026733		
BC1000XL	1VRY11194J1025823	BC1000XL	1VRY11198J1026781		
BC1000XL	1VRY11191J1025827	BC1000XL	1VRY11195J1026785		
BC1000XL	1VRY11191J1025844	BC1000XL	1VRY11199J1026790		
BC1000XL	1VRY11195J1025846	BC1000XL	1VRY11192J1026842		
BC1000XL	1VRY11192J1026081	BC1000XL	1VRY11195J1026981		
BC1000XL	1VRY11198J1026084	BC1000XL	1VRY11199J1027065		
BC1000XL	1VRY11195J1026088	BC1000XL	1VRY11190J1027066		
BC1000XL	1VRY11197J1026092	BC1000XL	1VRY11192J1027067		
BC1000XL	1VRY11194J1026115	BC1000XL	1VRY11194J1027068		
BC1000XL	1VRY11194J1026230	BC1000XL	1VRY11196J1027069		
BC1000XL	1VRY11198J1026232	BC1000XL	1VRY11192J1027070		



PURPOSE: POSSIBLE LOSS OF WHEEL AND RISK OF CRASH.

Specific wheels (steel rim) with bolt pattern 8 on 6½ inch (165 mm) circle to be used with 5/8” studs provided by a supplier [only 7000 lb (3175 kg) electric brake axle configuration]:

- have an incorrect lug nut contact area causing wheel lug nuts to loosen; and/or
- can develop possible cracks causing the tire to lose air pressure.

Both conditions may increase the risk of wheel loss and the risk of a crash. **Death or serious injury** is possible. Property damage may also occur.

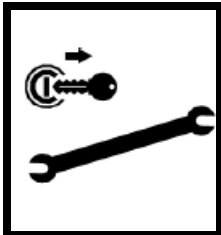
This kit has been created to provide the necessary parts and instructions to replace the wheel and tire assembly, install a new safety sign, install a new wheel/tire specification placard decal and provide a Supplemental Operator’s and Maintenance Manual.

SPECIAL TOOLS AND CONDITIONS:

- None



WARNING: Raised load can shift or fall. Death or serious injury could be possible if struck or crushed by falling load. Never allow anyone under a raised load unless load is securely supported to prevent it from shifting or falling.



WARNING: Failure to use shutdown procedure can result in unexpected hazard(s). Death or serious injury could result due to entanglement, crushing, cutting, or other hazardous contact. Follow Shutdown Procedure after operating, before performing any service or maintenance, and before transporting.

BC1000 SHUTDOWN PROCEDURE

STOPPING THE MACHINE

NOTICE: For your safety and safety of others, use the shutdown procedure before servicing, cleaning, unclogging, inspecting, or transporting the chipper. A variation of this procedure may be used if so instructed within this manual or if an emergency requires it.

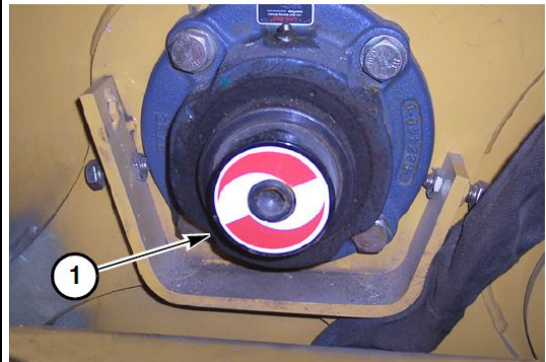
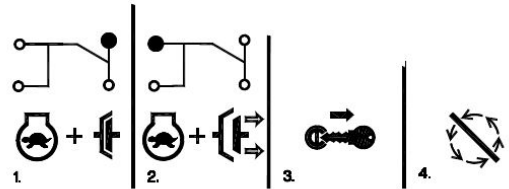
1. Return *Upper Feed Control Bar* to top STOP position.
2. Place *Throttle/Clutch Lever* to LOW idle engaged position.

NOTICE: Whenever practical and safe allow engine to idle for 1 to 5 minutes before shutting down after operating at full power. Please consult machine's engine manual for details.

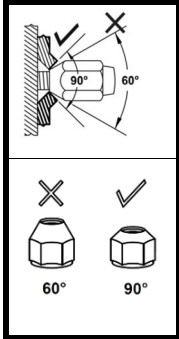
3. Wait for cutter drum to slow.
4. Place *Cutter Engage Throttle Lever* in the DISENGAGED/LOW position.
5. If so equipped, shut off remote control if in use.
6. Turn ignition key to OFF position.
7. Wait for the cutter drum and belt to stop.

NOTICE: Cutter drum rotation can be checked by looking at the end of the shaft (1) on the left side of the cutter wheel housing. The cutter drum will continue to turn for a short time after engine has stopped.

8. Remove ignition key.
9. Close and latch feed table



Procedure: WHEELS, AXLES, AND SUSPENSION MAINTENANCE



WARNING: Incompatible lug nuts may loosen and cause wheel loss.

Use only 5/8-18 lug nuts with a 90° conical taper.

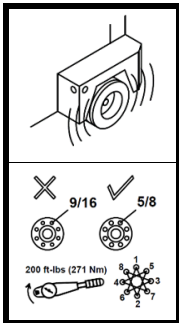
NOTICE: Improper or mismatched lug nuts and wheels can cause wheel loss leading to a crash. The conical taper of the lug nuts must properly engage the wheel lug nut seats.

The wheels and axle hubs on this trailer use special 5/8"-18 lug nuts with a 90° conical taper.

Never use incompatible lug nuts, such as those with a 60° taper or a flat face.

Never use wheels intended for 9/16" wheel lugs.

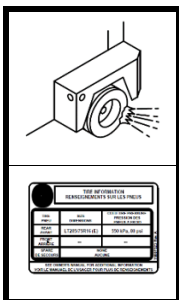
Never use wheels that do not utilize a 90° conical lug nut seat taper.



WARNING: Incompatible wheels or loose lug nuts can cause wheel loss and machine damage.

Use only wheels that are compatible with 5/8 lug studs and 90° conical nuts. Check lug nut torque regularly.

Properly tighten lug nuts in a star pattern using only hand tools. DO NOT use impact wrenches which can damage the lug nuts, lug nut seats, and hub studs. Torque and re-check every 500 miles (800 km). Refer to "Specifications" in the [Maintenance Manual](#).



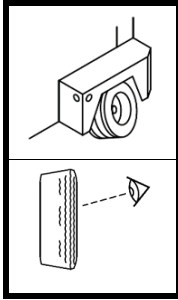
WARNING: Improper tire pressure can cause a blowout.

Set cold tire pressure according to tire placard. Check pressure monthly.

NOTICE: Under-inflation causes tire damage and can lead to a blowout.

Set the tire air pressure to the value listed on the machine's tire placard, NOT the pressure printed on the sidewall of the tire. Recheck monthly. Tires normally lose 1–2 psi (6.9–13.8 kPa) per month.

Tire pressure can also drop if the temperature outside has dropped significantly, so check more often in cold weather.

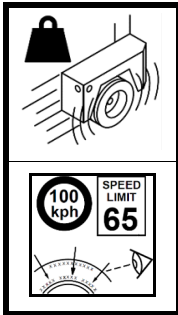


WARNING: Worn or damaged suspension can cause premature tire wear and machine damage.

Uneven wear on tires can be an indication of worn suspension or poor alignment.

NOTICE: Axle or suspension damage can cause premature tire wear and tire failure, or axle failure.

Have your trailer checked if you suspect misalignment, if your tires have suffered any type of impact, or if you observe uneven tire wear.



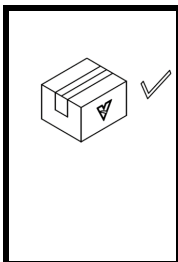
WARNING: Avoid overloading or excess speed.

Follow manufacturer's load and speed ratings.

NOTICE: High speed and overloading cause tire, axle, and suspension failure.

DO NOT exceed the speed rating of the tires.

DO NOT exceed the load rating of the tires, axles, and suspension.

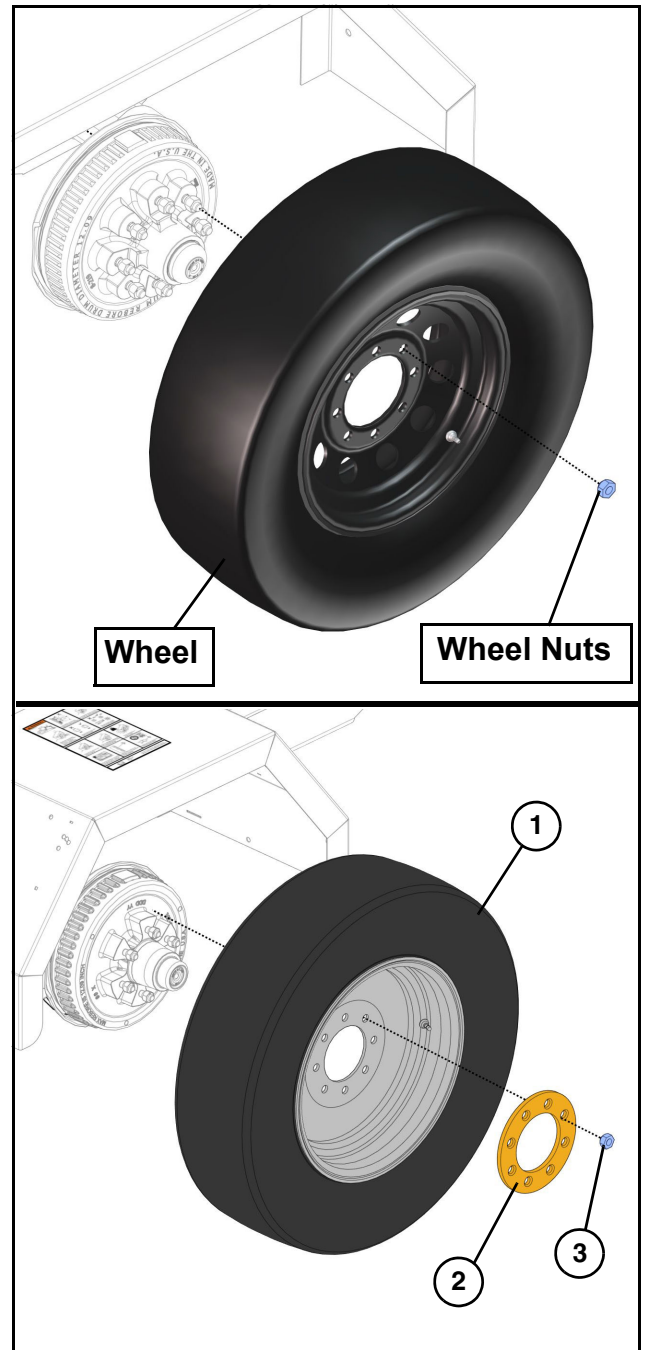


WARNING: Always use Vermēer authorized wheels, lug nuts, tires, and suspension components.

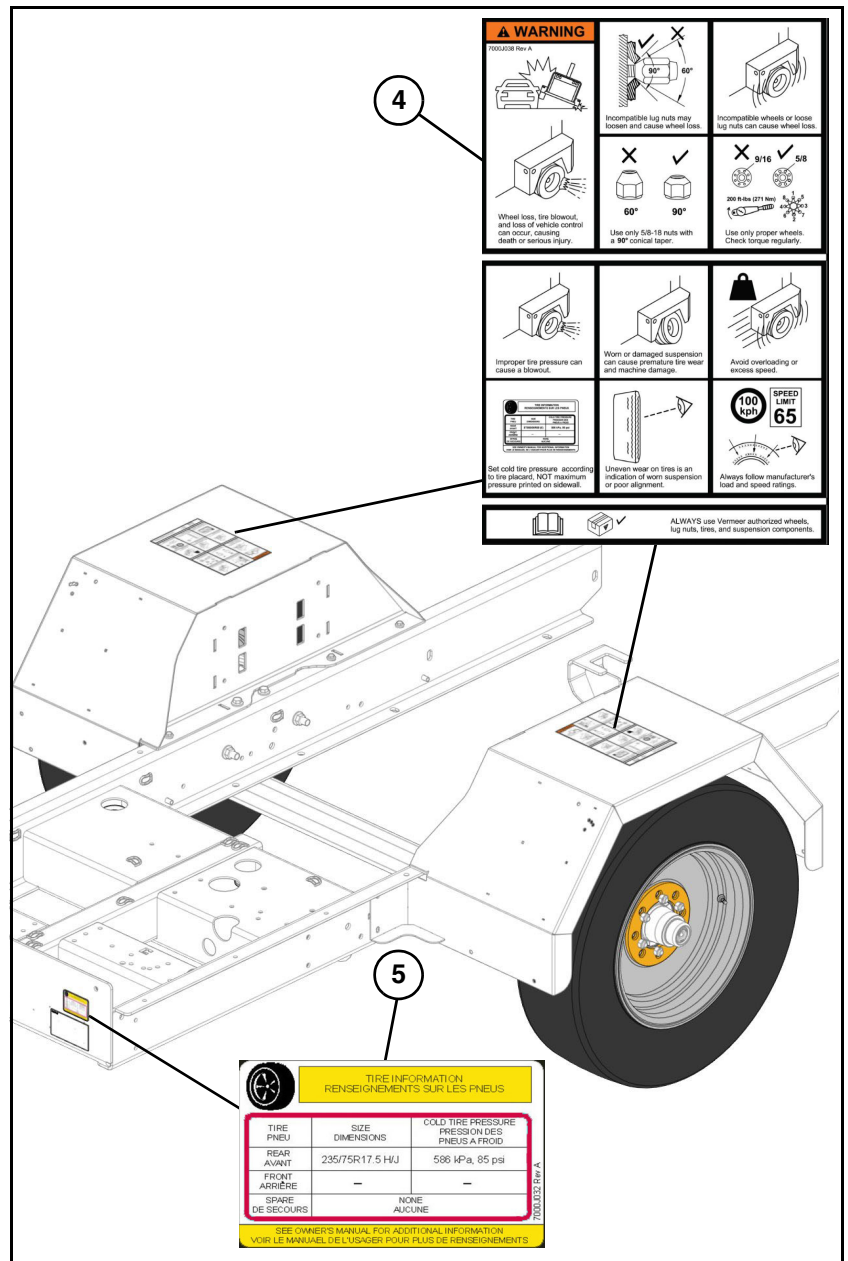
Improper or mismatched parts can lead to component failure, resulting in a crash.

PROCEDURE: WHEEL AND TIRE ASSEMBLY IK01

1. Using a suitable lifting device capable of lifting approximately 10,000 lb (4550 kg), raise machine off ground to allow adequate room to remove tire.
2. Place suitable blocking under trailer frame and remove lifting device.
3. Remove wheel, and 8 wheel nuts from each side of machine. Weight of each wheel is approximately 91 lb (42 kg).
4. Deflate tire or remove tire from wheel.
5. The removed used tires may be retained in your **used** tire inventory or disposed of. Cost of tire removal and disposal is included in labor hours.
6. Discard wheel nuts so they can never be used or sold for any purpose.
7. Torch cut wheels across lug nut area.
8. Take photo(s) of the destroyed wheels and attach to campaign warranty claim.
9. Install supplied wheel assemblies (1) and clamp rings (2) on axle using 16 wheel nuts (3). Weight of each wheel is approximately 91 lb (42 kg). Torque wheel nuts in a star pattern to 200 ft-lb (271 Nm).
10. Check tire pressure to be at 85 psi (590 kPa).

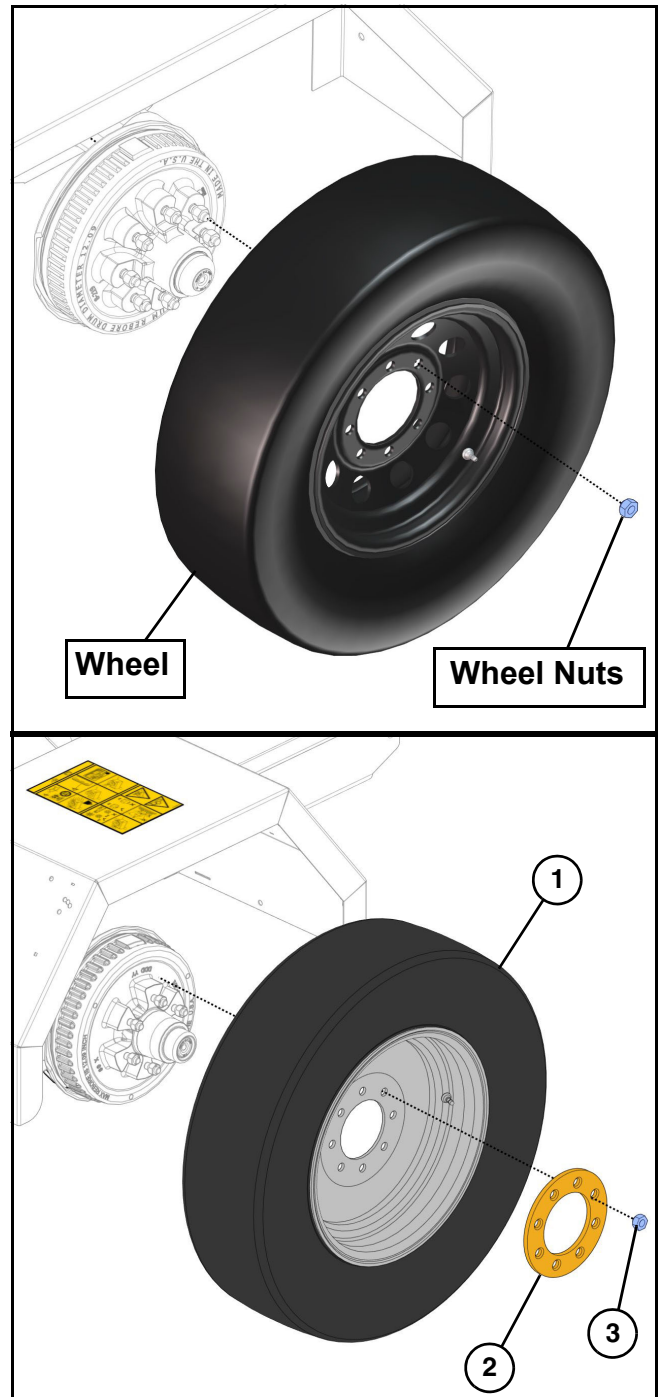


11. On left side of the machine, apply new supplied wheel and tire warning decal (4) to the top of the left and right fenders.
12. On the front, left of frame, above the serial tag, apply tire information decal (5).
13. Provide additional Supplemental Manual to owner.
14. Install operator's manual with ring in manual storage box.

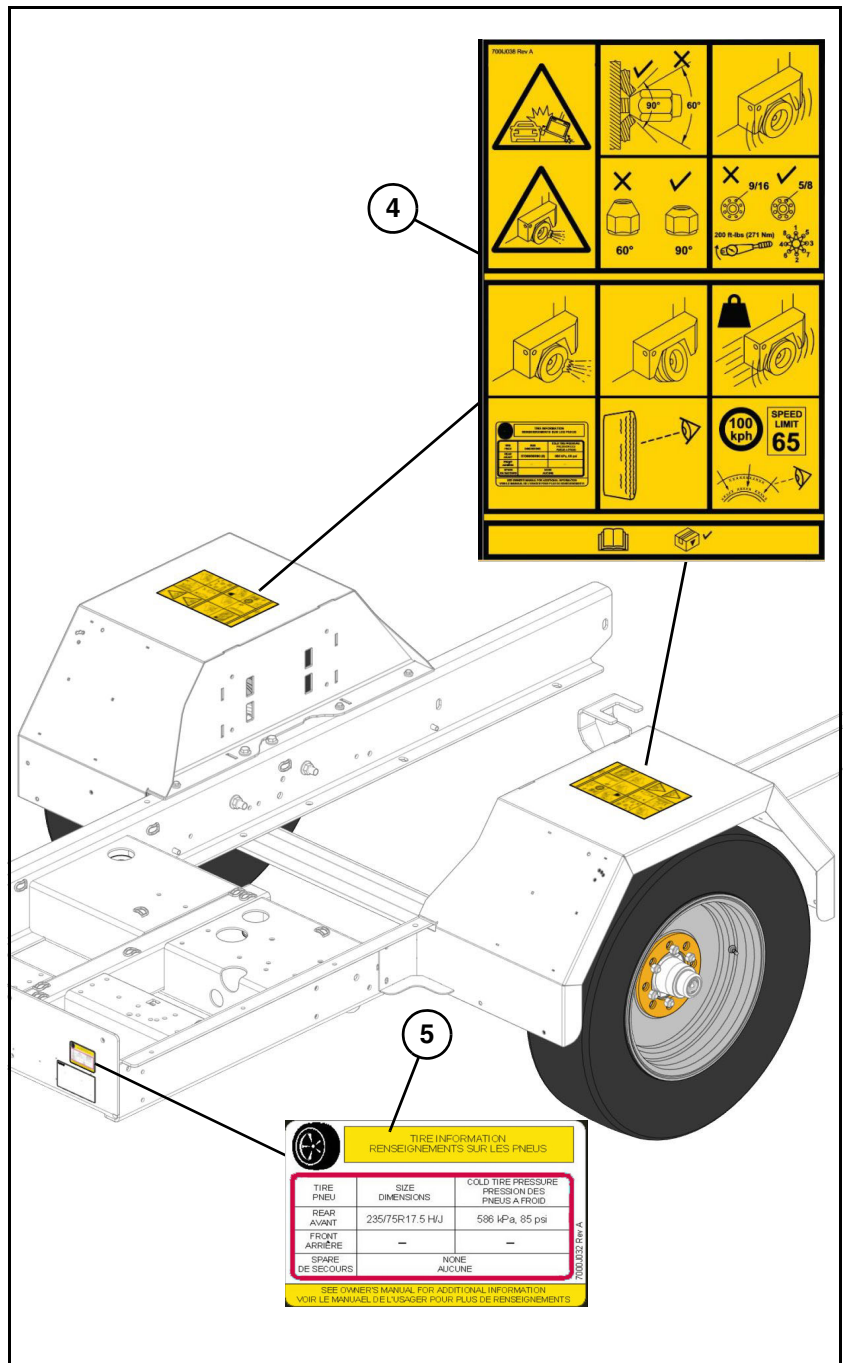


PROCEDURE: WHEEL AND TIRE ASSEMBLY IK02

1. Using a suitable lifting device capable of lifting approximately 10,000 lb (4550 kg), raise machine off ground to allow adequate room to remove tire.
2. Place suitable blocking under trailer frame and remove lifting device.
3. Remove wheel, and 8 wheel nuts from each side of machine. Weight of each wheel is approximately 91 lb (42 kg).
4. Deflate tire or remove tire from wheel.
5. The removed used tires may be retained in your **used** tire inventory or disposed of. Cost of tire removal and disposal is included in labor hours.
6. Discard wheel nuts so they can never be used or sold for any purpose.
7. Torch cut wheels across lug nut area.
8. Take photo(s) of the destroyed wheels and attach to campaign warranty claim.
9. Install supplied wheel assemblies (1) and clamp rings (2) on axle using 16 wheel nuts (3). Weight of each wheel is approximately 91 lb (42 kg). Torque wheel nuts in a star pattern to 200 ft-lb (271 Nm).
10. Check tire pressure to be at 85 psi (590 kPa).

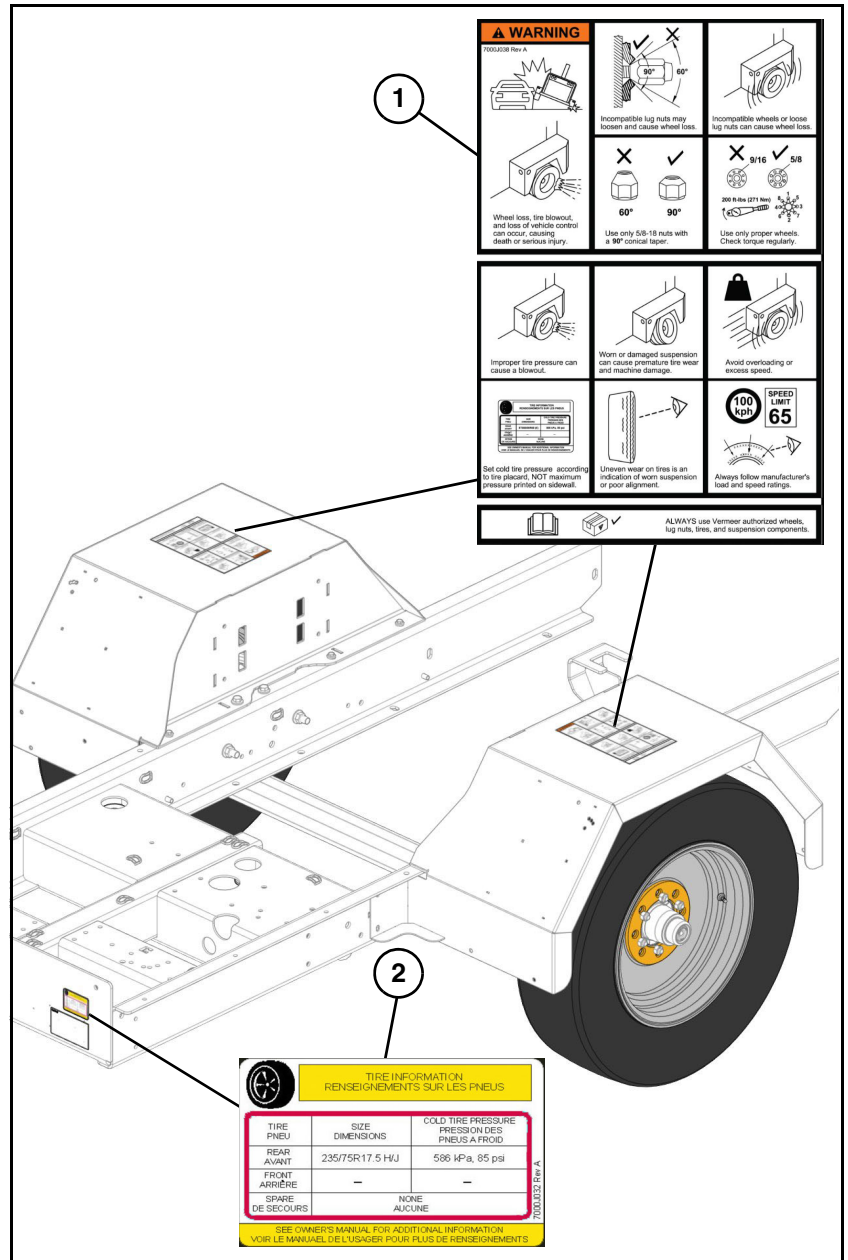


11. On left side of the machine, apply new supplied wheel and tire warning decal (4) to the top of the left and right fenders.
12. On the front, left of frame, above the serial tag, apply tire information decal (5).
13. Provide additional Supplemental Manual to owner.
14. Install operator's manual with ring in manual storage box.



PROCEDURE: SAFETY SIGN, TIRE SPECIFICATION PLACARD, MANUAL INSTALLATION IK03

1. Machines with wheel and tire assembly (PN 163759457), previously installed must have new decals installed. On the left side of the machine, apply new supplied wheel and tire warning decal (1) to the top of the left and right fenders.
2. On the front, left of frame, above the serial tag, apply tire information decal (2).
3. Provide additional Supplemental Manual to owner.
4. Installed operator's manual with ring in manual storage box.



PROCEDURE: SAFETY SIGN, TIRE SPECIFICATION PLACARD, MANUAL INSTALLATION IK04

1. Machines with wheel and tire assembly (PN 163759457), previously installed must have new decals installed. On the left side of the machine, apply new supplied wheel and tire warning decal (1) to the top of the left and right fenders.
2. On the front, left of frame, above the serial tag, apply tire information decal (2).
3. Provide additional Supplemental Manual to owner.
4. Installed operator's manual with ring in manual storage box

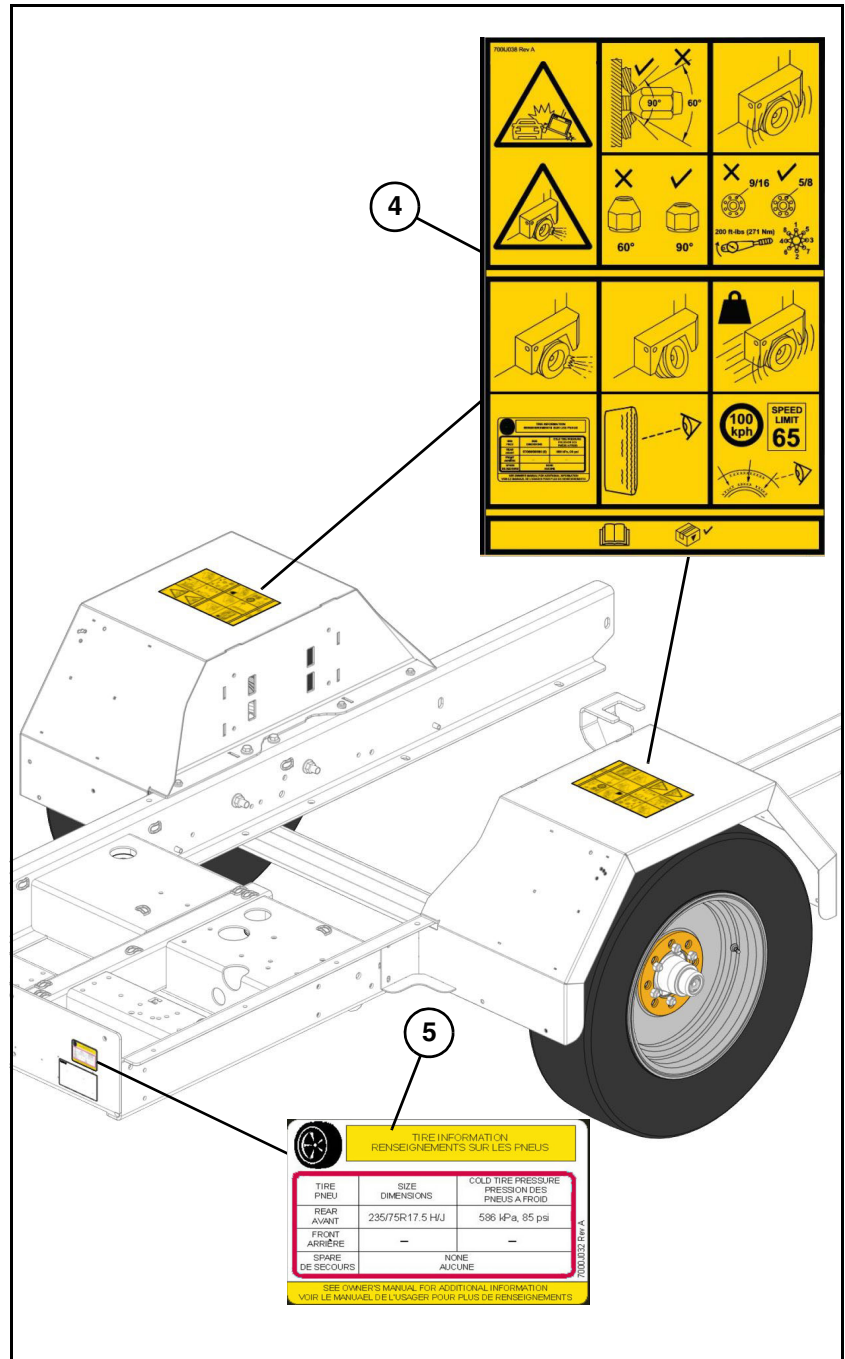


Figure 1

UNIT OWNER COPY:
Insert into Parts Manual
for future reference

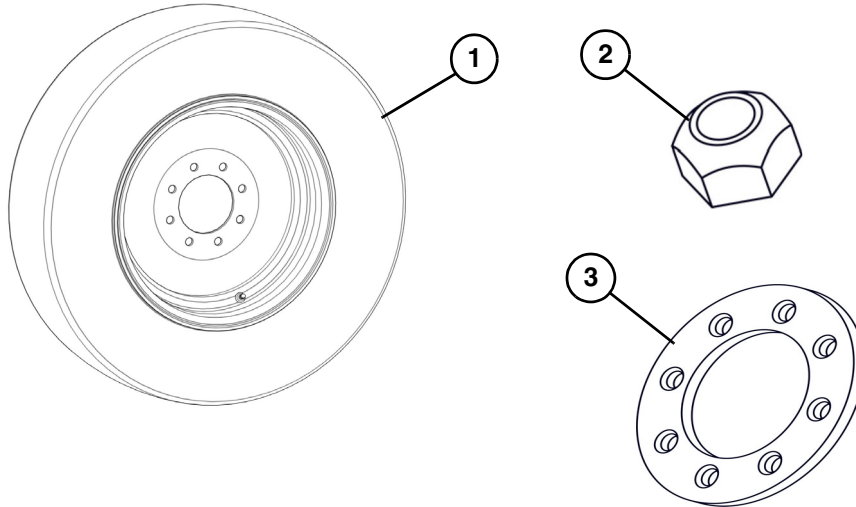


FIGURE 1 Parts List

REF. NO.	PART NO.	DESCRIPTION	IK01 QTY.	IK02 QTY.	IK03 QTY.	IK04 QTY.
1	163713905	HEAVY DUTY - WHEEL ASSEMBLY 235/75R17.5 H/J; 5/8 S	2	2		
2	116621009	WHEEL NUT 5/8in 18 CONE 90°	16	16		
3	215490049	CLAMP RING	2	2		
		Kit includes all items in Figure 1 Parts List.				

UNIT OWNER COPY:
Insert into Parts Manual
for future reference

Figure 2

WARNING
7000J038 Rev A

Incompatible lug nuts may loosen and cause wheel loss.

Incompatible wheels or loose lug nuts can cause wheel loss.

Wheel loss, tire blowout, and loss of vehicle control can occur, causing death or serious injury.

Use only 5/8-18 nuts with a 90° conical taper.

Use only proper wheels. Check torque regularly.

Improper tire pressure can cause a blowout.

Worn or damaged suspension can cause premature tire wear and machine damage.

Avoid overloading or excess speed.

Set cold tire pressure according to tire placard, NOT maximum pressure printed on sidewall.

Uneven wear on tires is an indication of worn suspension or poor alignment.

Always follow manufacturer's load and speed ratings.

100 kph SPEED LIMIT 65

ALWAYS use Vermeer authorized wheels, lug nuts, tires, and suspension components.

7000J038 Rev A

Incompatible lug nuts may loosen and cause wheel loss.

Incompatible wheels or loose lug nuts can cause wheel loss.

Wheel loss, tire blowout, and loss of vehicle control can occur, causing death or serious injury.

Use only 5/8-18 nuts with a 90° conical taper.

Use only proper wheels. Check torque regularly.

Improper tire pressure can cause a blowout.

Worn or damaged suspension can cause premature tire wear and machine damage.

Avoid overloading or excess speed.

Set cold tire pressure according to tire placard, NOT maximum pressure printed on sidewall.

Uneven wear on tires is an indication of worn suspension or poor alignment.

Always follow manufacturer's load and speed ratings.

100 kph SPEED LIMIT 65

TIRE INFORMATION
RENSEIGNEMENTS SUR LES PNEUS

TIRE PNEU	SIZE DIMENSIONS	COLD TIRE PRESSURE PRESSION DES PNEUS A FROID
REAR AVANT	235/75R17.5 H/J	586 kPa, 85 psi
FRONT ARRIÈRE	—	—
SPARE DE SECOURS	NONE AUCUNE	

SEE OWNER'S MANUAL FOR ADDITIONAL INFORMATION
VOIR LE MANUEL DE L'USAGER POUR PLUS DE RENSEIGNEMENTS

FIGURE 2 Parts List

REF. NO.	PART NO.	DESCRIPTION	IK01 QTY.	IK02 QTY.	IK03 QTY.	IK04 QTY.
1	7000J038	DECAL-WARNING, WHEEL & TIRE	2		2	
2	7001J038	DECAL-WARNING, WHEEL & TIRE		2		2
3	7000J032	DECAL-TIRE INFORMATION	1	1	1	1
Kit includes all items in Figure 2 Parts List.						

UNIT OWNER COPY:
Install manual with ring as described in procedures above. Provide additional supplemental manual to owner for future reference.

Figure 3

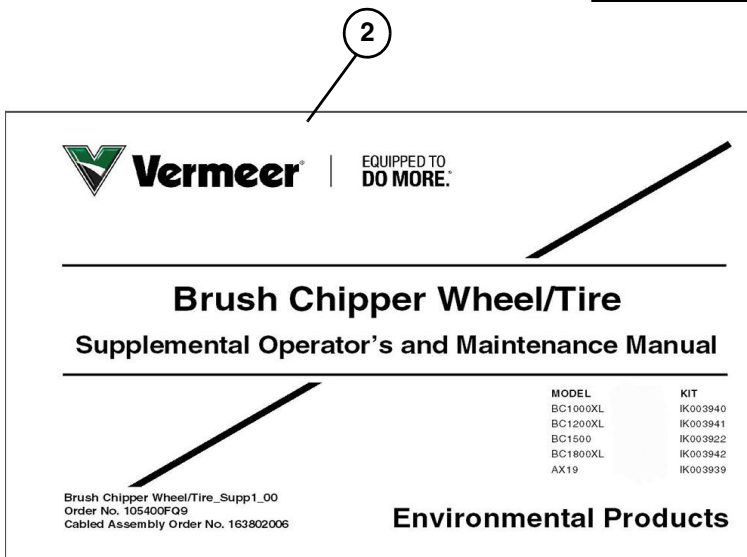
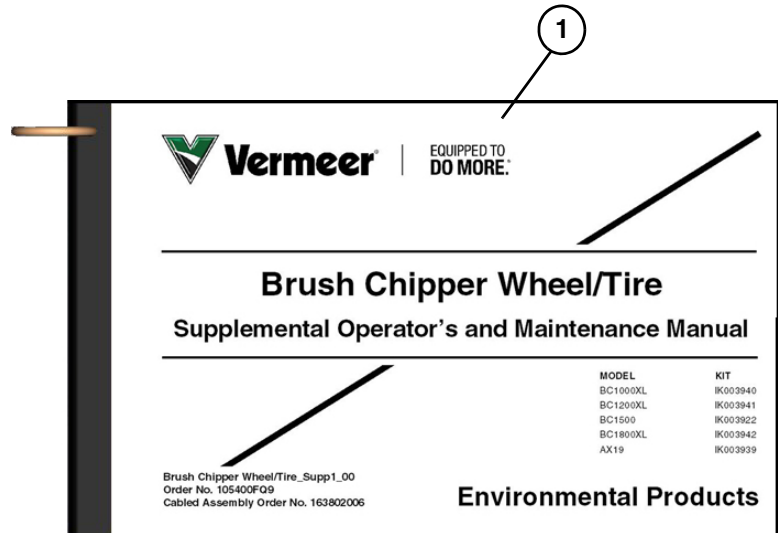


FIGURE 3 Parts List

<u>REF. NO.</u>	<u>PART NO.</u>	<u>DESCRIPTION</u>	<u>IK01 QTY.</u>	<u>IK02 QTY.</u>	<u>IK03 QTY.</u>	<u>IK04 QTY.</u>
1	163802006	BRUSH CHIPPER WHL/TIRE SUPPLEMENTAL MANUAL CABLED	1	1	1	1
2	105400FQ9	BRUSH CHIPPER WHEEL/TIRE SUPPLEMENTAL MANUAL	1	1	1	1
Kit includes all items in Figure 3 Parts List.						