



# HYUNDAI

## Technical Service Bulletin

GROUP	NUMBER
<b>CAMPAIGN</b>	<b>20-01-010H</b>
DATE	MODEL(S)
<b>February, 2020</b>	<b>2020MY KONA</b>

**SUBJECT:** 2020MY KONA OS GROSS AXLE WEIGHT RATING (GAWR) CERTIFICATION LABEL REPLACEMENT (RECALL CAMPAIGN 187)

### ★ IMPORTANT

#### \*\*\* Dealer Stock and Retail Vehicles \*\*\*

Dealers must perform this Recall Campaign on all affected vehicles prior to customer retail delivery and whenever an affected vehicle is in the shop for any maintenance or repair.

When a vehicle arrives at the service department, access Hyundai Motor America’s “Warranty Vehicle Information” screen via WEBDCS to identify open Campaigns.

**Description:** Certain 2020 model year Kona vehicles indicate the incorrect Gross Axle Weight Rating (GAWR). As such, these vehicles do not comply with Federal Motor Vehicle Safety Standards. An incorrect GAWR could result in the vehicle being overloaded, increasing the risk of a crash. This bulletin describes the procedure to replace the affected area of the GAWR certification label.




INFORMATION REDACTED PURSUANT TO THE FREEDOM OF INFORMATION ACT (FOIA), 5 U.S.C. 552(B)(6)

**Applicable Vehicles:** Certain 2020MY Kona (OS) vehicles

Circulate To: General Manager, Service Manager, Parts Manager, Warranty Manager, Service Advisors, Technicians, Body Shop Manager, Fleet Repair

**Parts Information:**

Part Name	Figure / Part Number	Qty	Note
GAWR LABEL		1	Completely place the updated GAWR label straight so it does not cover any other information on the existing label.

**Warranty Information:**

Model	Op Code	Operation	Op Time	Causal Part	Nature Code	Cause Code
Kona (OS)	01D004R0	Gross Axle Weight Rating (GAWR) Label Replacement	0.2 M/H	GAWRRLABEL187	B1A	ZZ7

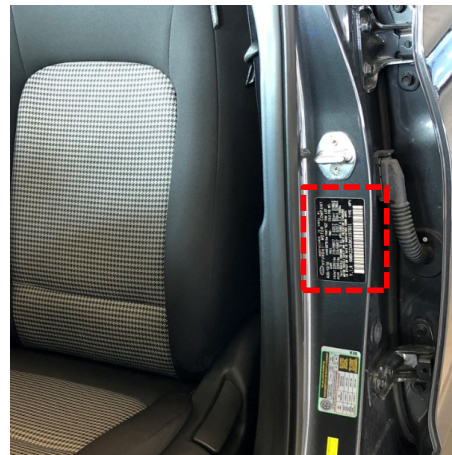
**IMPORTANT:**

**NOTE 1:** Submit Claim on Campaign Claim Entry Screen.

**NOTE 2:** If a part is found in need of replacement while performing Recall Campaign 187 and the affected part is still under warranty, submit a separate claim using the same Repair Order. If the affected part is out of warranty, submit a Prior Approval Request for goodwill consideration prior to the repair.

**Service Procedure:**

1. Open the driver's side door and locate the GAWR certification label located just below the B pillar door latch.



2. Ensure the existing GAWR certification label is clean and dry. If necessary wipe with a clean water dampened rag and dry the label off.



3. Put the updated GAWR label over the portion of the existing GAWR label.

**NOTICE**

Completely place the updated GAWR label straight so it does not cover any other information on the existing label.

