



# RECALL CAMPAIGN BULLETIN

Classification: RS17-046d	Reference: NTB17-055d	Date: January 15, 2020
------------------------------	--------------------------	---------------------------

## VOLUNTARY SAFETY RECALL CAMPAIGN 2002-2006 SENTRA; FRONT PASSENGER AIR BAG MODULE

This bulletin has been amended. See **AMENDMENT HISTORY** on page 12.  
Please discard previous versions of this bulletin.

**CAMPAIGN ID #:** PM683 and PM684  
**NHTSA #:** 15V-287  
**APPLIED VEHICLES:** 2002-2006 Sentra (B15)

**Check Service COMM or Dealer Business Systems (DBS)  
National Service History to confirm campaign eligibility.**

### INTRODUCTION

Nissan is conducting this Voluntary Safety Recall Campaign on certain specific 2002-2006 Sentra vehicles to replace the front passenger air bag module. This service will be performed at no charge to the customer for parts or labor.

Takata has issued return packaging, shipping labels, documents, and directions that must be used and followed in order to properly carry out this campaign. Takata's documentation is attached and is part of this bulletin.

### IDENTIFICATION NUMBER

Nissan has assigned identification numbers PM683 and PM684 to this campaign. This number must appear on all communication and documentation of any nature dealing with this campaign.

### DEALER RESPONSIBILITY

It is the dealer's responsibility to check Service COMM or Dealer Business Systems (DBS) National Service History for the campaign status on each vehicle falling within the range of this voluntary safety recall campaign which for any reason enters the service department. This includes vehicles purchased from private parties or presented by transient (tourist) owners and vehicles in a dealer's inventory. **Federal law requires that new vehicles in dealer inventory which are the subject of a safety recall must be corrected prior to sale. Failure to do so can result in civil penalties by the National Highway Traffic Safety Administration.** While federal law applies only to new vehicles, Nissan strongly encourages dealers to correct any used vehicles in their inventory before they are retailed.

Nissan Bulletins are intended for use by qualified technicians, not 'do-it-yourselfers'. Qualified technicians are properly trained individuals who have the equipment, tools, safety instruction, and know-how to do a job properly and safely. **NOTE:** If you believe that a described condition may apply to a particular vehicle, DO NOT assume that it does. See your Nissan dealer to determine if this applies to your vehicle.

## REQUIRED SPECIAL TOOLS

### Quick Scan Tool (J-52352)

- Each retailer has been shipped one Quick Scan Tool (J-52352).
- Additional tools can be obtained from Tech•Mate: [nissantechmate.com](http://nissantechmate.com) or 1-800-662-2001.



Figure 1

## SERVICE PROCEDURE

**IMPORTANT:** Follow all cautions, warnings, and notices in the ESM when working on or near the SRS, such as an air bag.

Handle interior trim carefully to avoid damage. Work with clean hands and clean tools to avoid dirt and stains. Use protective covers as needed.

1. Write down the radio settings.

<b>Presets</b>	<b>1</b>	<b>2</b>	<b>3</b>	<b>4</b>	<b>5</b>	<b>6</b>
<b>AM</b>						
<b>FM 1</b>						
<b>FM 2</b>						
<b>SAT 1</b>						
<b>SAT 2</b>						
<b>Bass</b>	<b>Treble</b>		<b>Balance</b>	<b>Fade</b>	<b>Speed Sen. Vol.</b>	

2. Turn the ignition OFF.
3. Disconnect both battery cables, negative cable first.
4. Wait at least 3 minutes.
5. Remove the glove box.
  - Refer to the ESM, section **IP – Instrument Panel**, for removal information.

## Module Inspection

**INSPECTION:** After glove box removal, inspect the module to confirm it needs to be replaced.

6. Look up into the dash (see Figure 2) and locate the right side of the module inflator.

- If the inflator has a nut on the end, do not replace.
  - Reassemble the vehicle in the reverse order and submit a claim for “Inspect Module, OK. Do not replace”.
- If the inflator does not have a nut on the end, continue with module replacement on the next page.

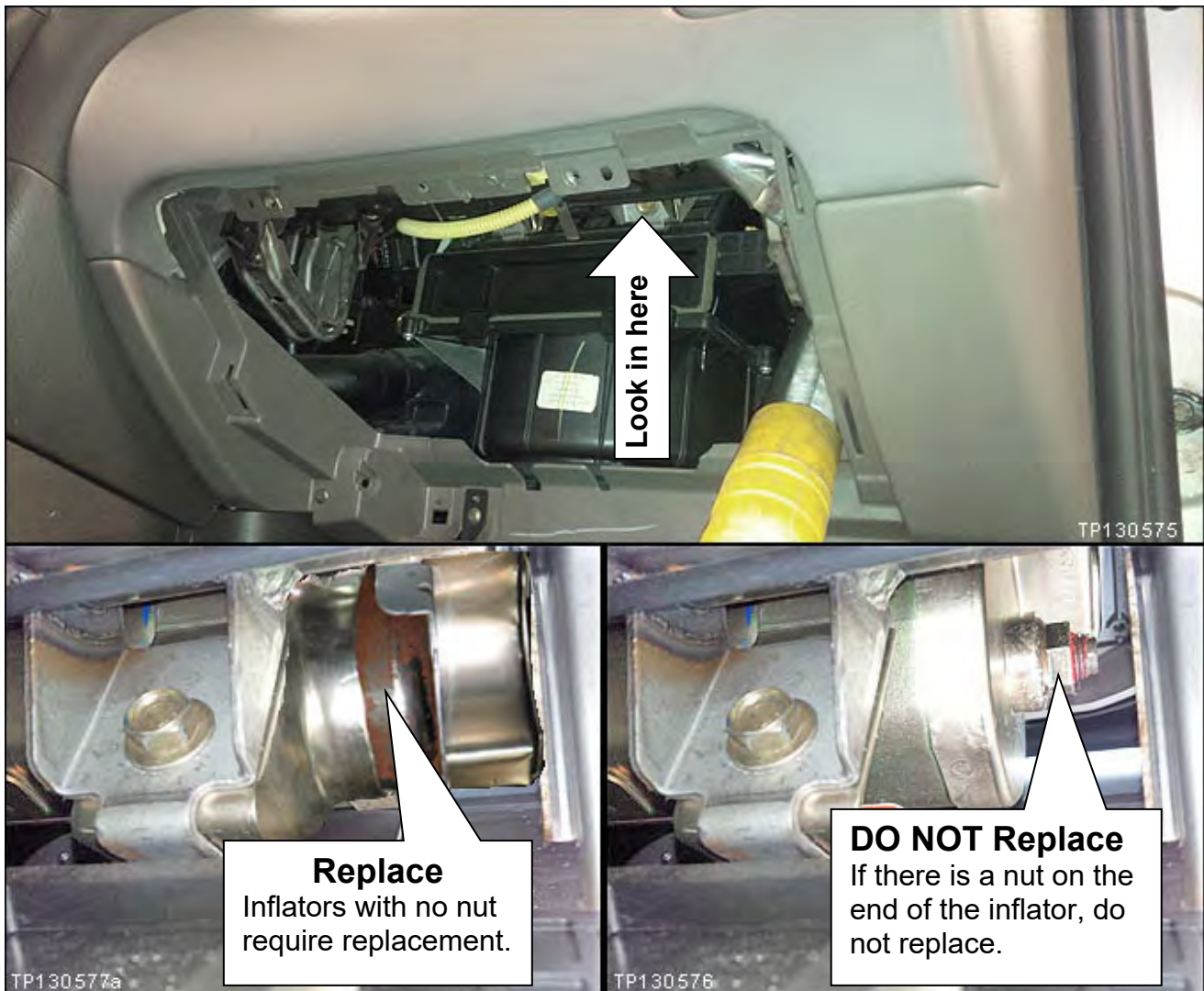


Figure 2

7. Register the new module serial number as follows.

- The new module is listed in the **PARTS INFORMATION**.

a. Attach the quick scan tool (J-52352) to your CONSULT PC USB port.



Figure 3

b. On the left side of the ASIST main menu, select **Tech Support Info**, then **Inventory Vehicle Actions**.

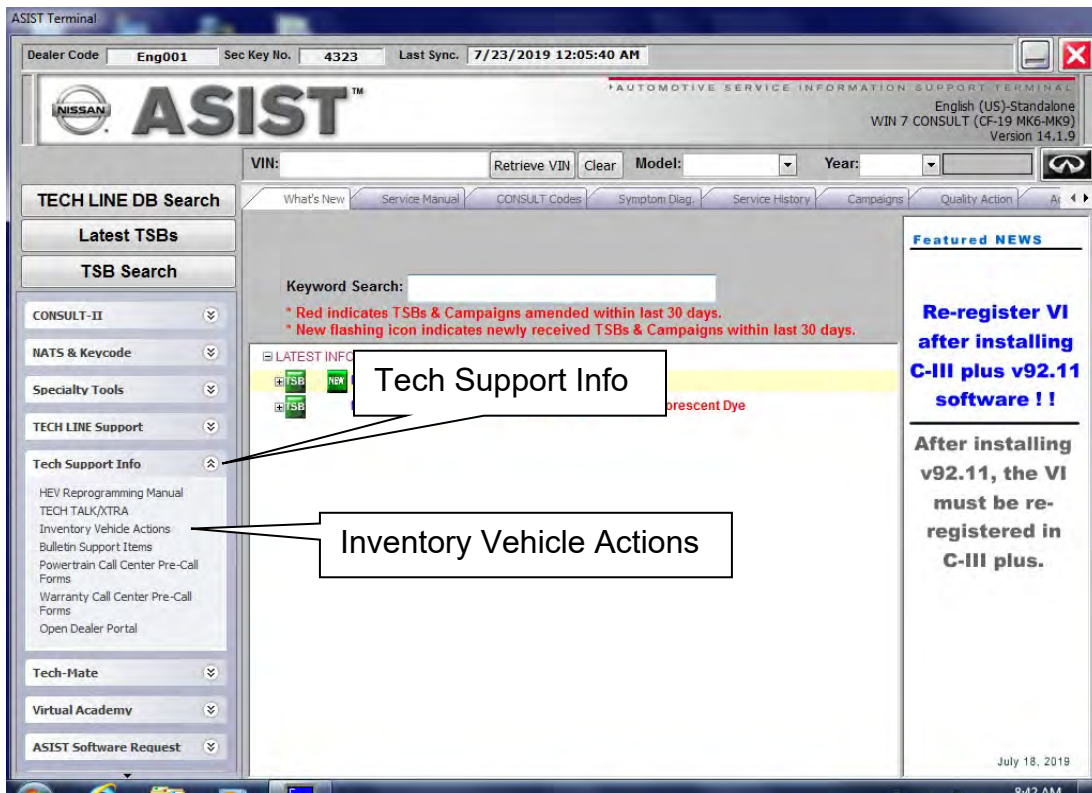


Figure 4



[Airbag to VIN Registration](#)

11/28/2016 1:36:32 PM

**Please enter/scan the VIN and Airbag Inflator Serial Number**

Dealer Code      ■■■■

Key Number      ■■■

VIN     

Airbag Serial Number           

Select **Submit** after both fields are populated.

Figure 7

e. Use the quick scan tool to scan the bar code (serial number) on the new module. (There are 2 copies of the same bar code on the module.)

- The serial number will automatically populate (see Figure 7).

**NOTE:** If needed, the serial number can be entered manually.

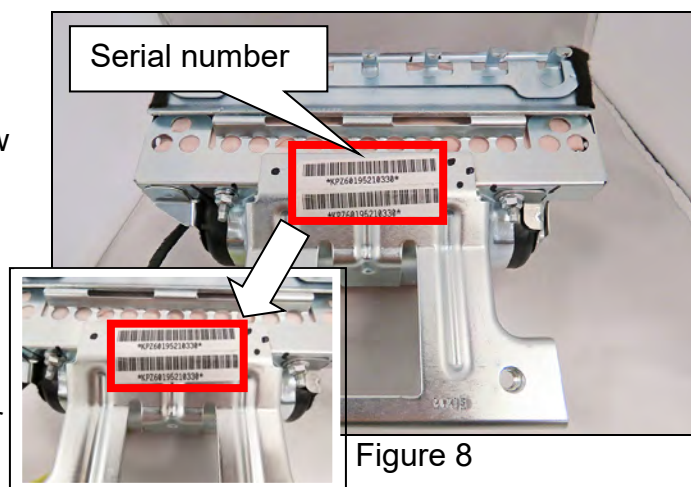


Figure 8

f. Select **Submit** on the ASIST screen (see Figure 7).

8. Remove the passenger air bag module (module) from the vehicle.

- Refer to the ESM, section, **SRS – Supplemental Restraint System (SRS)**, for module removal information.

9. Set the module in a clean working area.

**WARNING:** Do not set the module facing down.

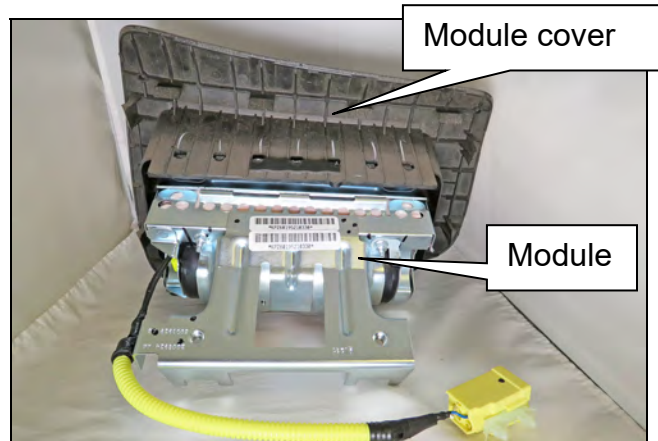


Figure 9

10. Use a finesse stick to release the module clips from the module cover.

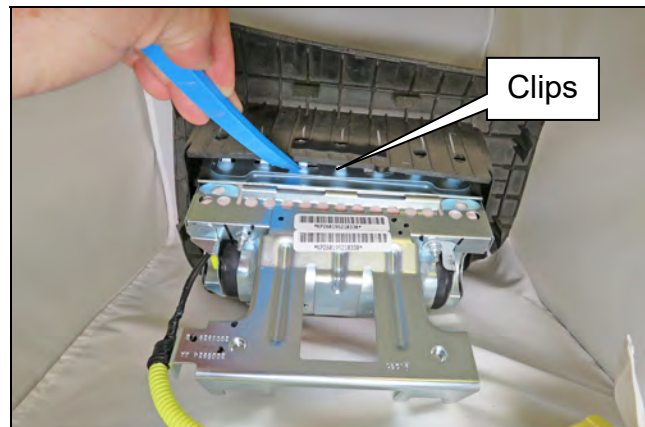


Figure 10



11. To release the clips on the opposite side, continue rotating the module cover away from the module.

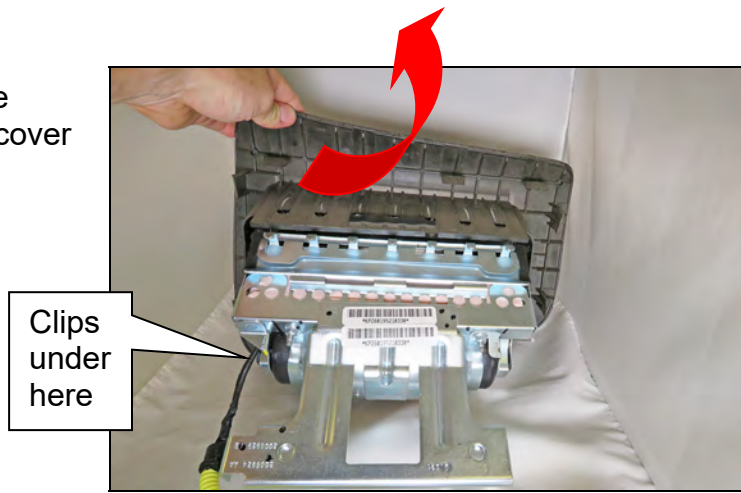


Figure 11

- In the next step, insert the module clips into the lower module cover first.

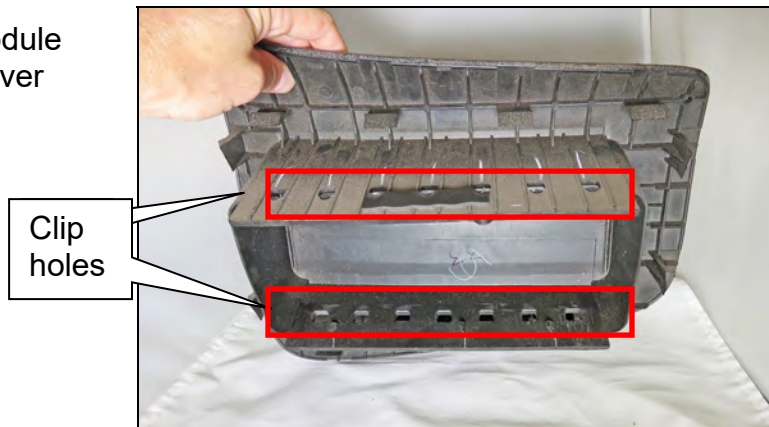


Figure 12

12. Insert the NEW module into the module cover.

- Seat the module clips into the left side of the module cover as shown in Figure 13.
- Rotate the module into the module cover to seat the clips on the opposite side.

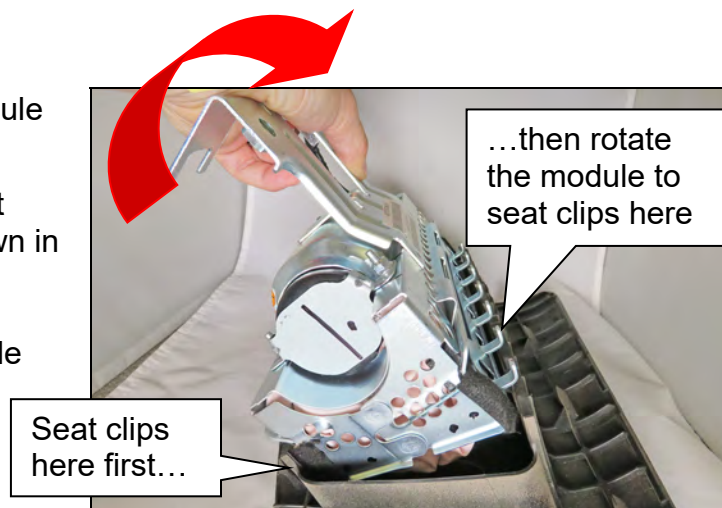


Figure 13

13. Ensure ALL module clips (circled in red) are fully seated into BOTH sides of the module cover as shown in Figure 14 and Figure 15.

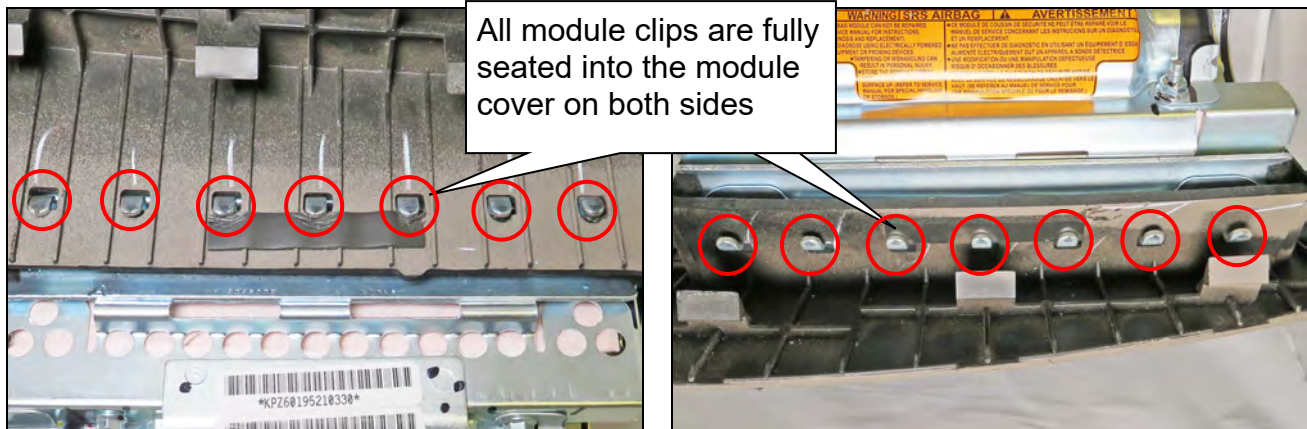


Figure 14

Figure 15

14. Install the module into the vehicle in the reverse order of removal.

- Make sure to use the new module mounting bolts included with the new module.
- Refer to the ESM, section, **SRS – Supplemental Restraint System (SRS)**, for module installation information.

15. Connect both battery cables – positive cable first.

16. Reset the clock and the radio settings.

17. Turn the ignition ON and observe the air bag warning light:

- The air bag warning light should illuminate for 7 seconds and then go out.

**NOTE:** If the air bag warning light does not operate as described above there may be an issue not covered by this campaign. Refer to ASIST and the appropriate Service Manual for additional diagnostic and repair information.

18. Return the removed (old / non-deployed) module in the box that the new module came in.

- Follow the return instructions provided by Takata.
- Return instructions provided by Takata are attached to this bulletin on the last page.

## PARTS INFORMATION

DESCRIPTION	PART #	QUANTITY
MODULE ASSY-AIR BAG, ASSIST	98515-4Z60E	1

### NOTE:

- Make sure to return the removed (old / non-deployed) module in the box that the new module came in.
- Follow the return instructions provided by Takata.
- Return instructions supplied by Takata are attached to this bulletin on the last page.

## CLAIMS INFORMATION

Submit a "CM" line claim using the following claims coding:

CAMPAIGN ("CM") I.D.	DESCRIPTION	OP CODE	FRT
PM683	Inspect Module, OK. Do not replace	PM6831	0.4 hrs.
	Remove and replace front passenger air bag module assembly	PM6833	0.6 hrs.

OR

CAMPAIGN ("CM") I.D.	DESCRIPTION	OP CODE	FRT
PM684	Inspect Module, OK. Do not replace	PM6840	0.4 hrs.
	Remove and replace front passenger air bag module assembly	PM6841	0.6 hrs.

## AMENDMENT HISTORY

<b>PUBLISHED DATE</b>	<b>REFERENCE</b>	<b>DESCRIPTION</b>
July 19, 2017	NTB17-055	Original bulletin published
October 5, 2017	NTB17-055a	PARTS INFORMATION and CLAIMS INFORMATION revised, and changes were made to pages 12, 16, and 17
December 6, 2017	NTB17-055b	SERVICE PROCEDURE revised
October 17, 2019	NTB17-055c	SERVICE PROCEDURE revised
January 15, 2020	NTB17-055d	CLAIMS INFORMATION revised and Campaign ID # added



# Takata Document

## NOTE

NOTE: International (including Mexico and Canada), Hawaii, Alaska, Puerto Rico, and US Virgin Islands dealers **CANNOT** follow below shipping instructions. Instead, dealerships in these locations **MUST** contact the following Takata/Merco USA representative directly for shipping instructions: Miguel Prigadaa – Tel #: 210-250-5078 or Email: [MLGTakataRestrains\\_International@XPO.com](mailto:MLGTakataRestrains_International@XPO.com)

NOTE: For Continental US 48 State dealerships, please follow steps 1-8 below.

- Specific to Step 4 below:
  - Follow step 4a if you receive the updated NON-FedEx label. Proceed to step 5.
  - Follow step 4b if you receive the FedEx label. Proceed to step 5.

### 1. Shipping Documents

#### a) Box Label

- Supplied with each Kit
- To be affixed to each box



#### b) Over-pack Label

- To be supplied by XPO.
- To be affixed to the outside of each pallet



#### c) Bill of Lading

- To be supplied by XPO.
- Print 2 copies: 1 for Dealer Records, 1 for LTL Driver



#### d) ERG Document

- To be supplied by XPO.
- To be provide by the Dealer to the LTL Driver for each shipment



### 5. Shipping Instructions – Prepare the Pallet

- a) Accumulate and palletize Kits
- b) Arrange Kits on Pallet as pictured here
  - 20 boxes per row/layer (5x4)
  - 10 rows/layers per pallet (200 boxes)
- c) Shrink-wrap Kits to Pallet
- d) Affix Over-pack Label on (1) side of Pallet (Not on Top)



### 6. Shipping Instructions – Schedule LTL Pickup

- a) Upon Accumulating 200 kits (1 Over-pack/Pallet) Minimum
  - Call XPO at 1-210-250-5079
  - If 200 Kits have not been accumulated in 30 days, please call XPO for direction
- c) Have the following Information Available
  - Dealer #
  - Quantity of Over-packs/Pallets
  - Quantity of Passenger Inflator Kits on each Pallet
  - Email Address where shipping Documentation can be received

### 2. Packing Instructions

a) Confirm box is in acceptable condition. If a new box is needed, follow the New Box instructions located in Box B of this page.

b) Place the un-deployed air bag inflator in the "cradle" of the box insert.



### 3. Closure Instructions

a) Close the top box flap, per box closure instructions located on front panel of box.



### 4a. Shipping Instructions - Label each Box

a) New Labels will begin shipping in each kit starting mid June, 2015



### 7. Shipping Instructions – Ship

- a) Give 1 Copy of BOL and 1 Copy of ERG to Driver
- b) Retain 1 Copy of BOL for Dealership records and archive for 2 Years

### 8. Requesting a New Box / Shipping Labels

If a new box or replacement shipping labels are needed, please contact the representative listed below by phone or email to request replacement materials.

Primary Contact: Armando Gonzalez - Tel #: 210-250-5079

E-Mail: [SCFieldaction.14305@xpo.com](mailto:SCFieldaction.14305@xpo.com)

To help expedite your request, please be prepared to provide the following information:

- a) Serial number on the original box.
- b) What Type of shipping material needed
  - Replacement Box
  - Two Part Return Label
  - Bill of Lading
  - ERG Form
- c) Dealer Shipping Information
  - Contact name
  - Dealer Address
  - Phone Number

