

**TO:** All Dealer Principals, Service Managers and Parts Managers

**Subject:** 2100i Interlocks

**Number:** SB 0304 **DATE:** 02/03/2020

### NOTICE



Follow recommended safety practices while performing all work. Refer to the FS Solutions/Guzzler/Vactor/TRUVAC/Westech Safety Manual for additional information.

This manual is available at: [www.vactor.com](http://www.vactor.com)

#### PURPOSE:

When in RECIRC or Flusher mode and switching to Jetting Mode the safety interlocks may fail to inhibit Jetting Mode if the unit is in drive. 2100i chassis, engine and transmission CANBus signals have changed over time. There are multiple CANBus signals the 2100i controls use for safety interlocks and some signals are not being consistently transmitted on the CANBus. This software update adds an additional interlock to inhibit work while in drive.

**Note:** the programming update is backward compatible to all units. All previous program versions must not be used and must be deleted.

#### UNITS TO SERVICE:

See attached list

Units with RECIRC or flusher as original equipment or retro-fitted are the highest priority.

**PARTS AVAILABILITY:** XX/XX/XXXX

#### WARRANTY COVERAGE:

Refer to last page of this bulletin for warranty instructions. A photo of the hose reel System Info screen and new decal installation after completion will be required.

#### LENGTH OF TIME

See Warranty page

#### SPECIAL TOOLS:

NA

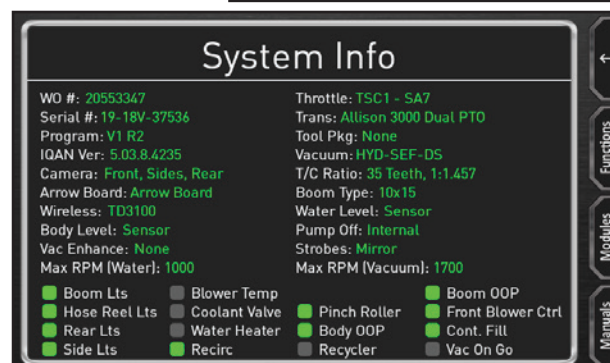
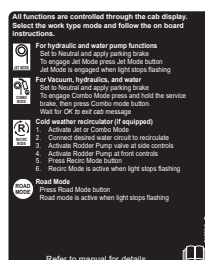
#### PARTS REQUIRED:

Part No.	Qty.	Description
512098C-30	1	DECAL,2100I SHIFT DECAL ONLY

## A copy of this bulletin must stay with the unit

#### PROCEDURE:

1. Shut down the unit on level ground, set the brake, and follow lockout/tagout procedures.
2. Install the system update using the attached instructions.
3. At the hose reel select the System tab.
4. Take a photo of the System Info screen and the new visor decal after installation to be submitted with the warranty.
5. Verify correct operation.



# Vactor 2100i

## IN CAB - CONTROLS

## OPERATION

This system automates the Jet, Combo and Recirc modes. The following are the general instructions. On screen guidance is provided as needed.

There is general operation decal typically installed under the driver side visor to guide the operator.

Set to Neutral and apply parking brake to start all jetting and combo mode operations.



All functions are controlled through the cab display. Select the work type mode and follow the on board instructions.



### For hydraulic and water pump functions

Set to Neutral and apply parking brake  
To engage Jet Mode press Jet Mode button  
Jet Mode is engaged when light stops flashing



### For Vacuum, hydraulics, and water

Set to Neutral and apply parking brake  
To engage Combo Mode press and hold the service brake, then press Combo mode button.  
Wait for *OK to exit cab* message



### Cold weather recirculator (if equipped)

1. Activate Jet or Combo Mode
2. Connect desired water circuit to recirculate
3. Activate Rodder Pump valve at side controls
4. Activate Rodder Pump at front controls
5. Press Recirc Mode button
6. Recirc Mode is active when light stops flashing



### Road Mode

Press Road Mode button  
Road mode is active when light stops flashing

512098 1FB



Refer to manual for details.

All functions are controlled through the cab display. Select the work type mode and follow the on board instructions.



### For hydraulic and water pump functions

Set to Neutral and apply parking brake  
To engage Jet Mode press Jet Mode button  
Jet Mode is engaged when light stops flashing



### For Vacuum, hydraulics, and water

Set to Neutral and apply parking brake  
To engage Combo Mode press and hold the service brake, then press Combo mode button.  
Wait for *OK to exit cab* message



### Cold weather recirculator (if equipped)

1. Activate Jet or Combo Mode
2. Connect desired water circuit to recirculate
3. Activate Rodder Pump valve at side controls
4. Activate Rodder Pump at front controls
5. Press Recirc Mode button
6. Recirc Mode is active when light stops flashing



### Vac on Go

1. Activate in Combo Mode
2. Choose wireless, choose fan/blower speed, enable vacuum, throttle up (all the same as normal)
3. Press VOG mode button
4. VOG is active when light stops flashing and VOG page is active. Release park brake and drive using VOG pedal



### Road Mode

Press Road Mode button  
Road mode is active when light stops flashing

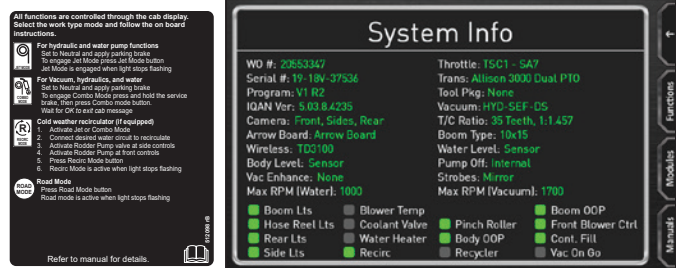
512098A 1FB



Refer to manual for details.

**PROCEDURE CONTINUED:**

Photos of the hose reel System Info screen and new decal installation after completion will be required.



**Warranty Coverage and Claim Submittal**

Standard Repair Time (SRT) of **2 hrs and 0 min** is allowed. Photos of the hose reel System Info screen and new decal installation after completion will be required.

Use the following information when submitting a warranty claim:

**New Claim** Claim Type: Machine Claim

---

**Machine Info**

Serial Number*	Work Order Number*	Model	Brand
<input type="text"/>	<input type="text" value="Enter Work Order Number"/>	<input type="text"/>	<input type="text"/>
Service Hours*	Mileage*	Warranty Start Date*	Warranty End Date*
<input type="text" value="Enter Service Hours"/>	<input type="text" value="Enter Mileage"/>	<input type="text"/>	<input type="text"/>
Date of Failure*	Date of Repair*	Ref Case No.	
<input type="text" value="Example : 2013-05-29"/>	<input type="text" value="Example : 2013-05-29"/>	<input type="text" value="Enter Old Claim No"/>	

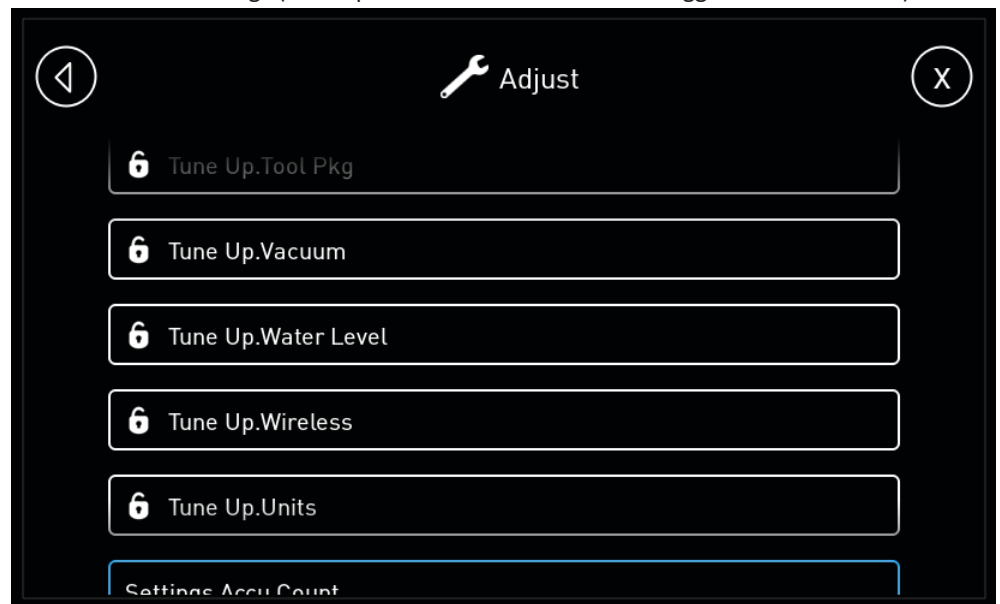
[Extended Warranty Policies](#) **Save**

---

Select Campaign

# 2100i IQAN Programming Guide

1. Pre-update function checks – the purpose of pre-update checks is to validate all functions of the truck are working before installing the update. This step is necessary to ensure proper validation for the program update. Repair any malfunctions prior to installing the update.
  - a. Test all functions on the 2100i per the provided checklist to make sure they are currently in working order.
2. Program Update
  - a. Record Current Settings – this can be done by writing down the information, taking pictures of the display screens, or through IQAN Run if your login allows you access to these items. This process will show how to find this information via the display.
    - i. **Hours – press the system tab, then functions, then Hours/cycles. Record this information**
    - ii. Configuration – press system tab to get to the system info screen. Record this information.
    - iii. Installed Options – this information is also available on the system info screen.
    - iv. Adjust Groups
      1. Go to Menu, then Adjust, then record all of the Tune Up settings as well as Accu-count and Units Settings (tune up code will be needed if not logged in to IQAN Run)



- 2.
  3. This step should also include sensor calibrations for body level, rodder shift points, rodder flow calibration, and other calibration settings in Tune Up.Setup Pages
- b. Upload Program and Confirm Program
    - i. Upload Program
    - ii. Confirm Configuration and Options
      1. Confirm that the configuration and optional content of the truck is the same as it was previously. It is possible that there will be new configuration items or options to set if a newer program was installed. It is less likely but also possible that the configuration and options have been erased. This would only happen during a major update though.

2. Configuration and options can be validated on the system info page. Press system tab to get to the system info screen.
        3. If the configuration or options have changed, note these to be changed in a later step
      - iii. Confirm Adjust groups
        1. Go to Menu, then Adjust, then check all of the Tune Up settings as well as Accu-count and Units Settings (tune up code will be needed if not logged in to IQAN Run) against those that you recorded from before the program update.
        2. If the adjust group settings have changed, note these to be changed in a later step
      - iv. Confirm Hours
        1. Hours – press the system tab, then functions, then Hours/cycles.
        2. Check this information against your recordings from before the program update. If the hour meter readings have changed, note these to be changed in a later step
      - c. Making changes – if changes need to be made, consult programming guide.
    3. Post-update function checks – the purpose of post-update checks is to validate all functions of the truck are working and that the truck is ready to operate.
      - a. Test all functions on the 2100i per the provided checklist to make sure they are currently in working order.

# 2100i RE-PROGRAMMING CHECKLIST

Unit S/N \_\_\_\_\_

PROGRAM VERSION/REV \_\_\_\_\_

DEALERSHIP \_\_\_\_\_

TECHNICIAN \_\_\_\_\_

## REPROGRAMMING PRE-CHECK

## REPROGRAMMING POST-CHECK

		COMPONANT	ACTION	Y	N			COMPONANT	ACTION	Y	N
<b>Cab Display</b>	<b>Shift To Modes</b>  <i>Follow new cab instructions</i>		Jet			<b>Shift To Modes</b>  <i>Follow instructions on next page</i>		Jet - Test 1			
			Combo					Jet - Test 2			
			Recirc					Combo - Test 3			
			VOG					Combo - Test 4			
<b>Front Hose Reel Op Station</b>	<b>Rodder Pump</b>		Shift			<b>Rodder Pump</b>		Shift			
	<b>Boom</b>		Up			<b>Boom</b>		Up			
			Down					Down			
			Left					Left			
			Right					Right			
			Extend					Extend			
			Retract					Retract			
	<b>5x5 or RDB</b>		Hose In			<b>5x5 or RDB</b>		Hose In			
			Hose Out					Hose Out			
	<b>Hose Reel</b>		Extend			<b>Hose Reel</b>		Extend			
			Retract					Retract			
		<b>Strobes</b>		Enable/Disable			<b>Strobes</b>		Enable/Disable		
		<b>Work Lights</b>		Enable/Disable			<b>Work Lights</b>		Enable/Disable		
		<b>Arrowboard/Arrowstick</b>		Enable/Disable			<b>Arrowboard/Arrowstick</b>		Enable/Disable		
		<b>Vacuum</b>		Enable/Disable			<b>Vacuum</b>		Enable/Disable		
				Vac Enhance					Vac Enhance		
		<b>Front Blower Control</b>		Enable/Disable			<b>Front Blower Control</b>		Enable/Disable		
		<b>Throttle</b>		Increase/Decrease			<b>Throttle</b>		Increase/Decrease		
		<b>E-Stop</b>		Enable/Disable			<b>E-Stop</b>		Enable/Disable		
		<b>Body</b>		Up			<b>Body</b>		Up		
			Down					Down			
	<b>Wireless</b>		All Functions			<b>Wireless</b>		All Functions			
	<b>Pendant</b>		All Functions			<b>Pendant</b>		All Functions			

## MODE INTERLOCKS TEST

MODE	TEST	ACTION	PASS	FAIL
Jet Mode	1	With parking brake enabled, select Jet mode	Jet mode achieved - Pass	Jet mode not achieved - Fail
	2	While in Jet mode, Release parking brake	Unit drops out of jet mode - Pass	Unit retains Jet mode - Fail
Combo Mode	3	With parking brake on, select combo without engaging service brake	Combo mode not achieved - Pass	Combo mode achieved - Fail
	4	With parking brake on, select combo while engaging service brake	Combo mode achieved - Pass	Combo mode not achieved - Fail
Recirc Mode	5	Following the instructions in the cab, put truck into recirc mode	Recirc mode achieved - Pass	Recirc mode not achieved - Fail
	6	While in recirc mode, select drive and then select Jet mode	Jet mode not achieved - Pass	Jet mode achieved - Fail
Vac on the Go	7	Following the instructions in the cab, put truck into VOG mode	VOG mode achieved - Pass	VOG mode not achieved - Fail
	8	While in VOG mode, select combo mode	Combo mode achieved - Pass	Combo mode not achieved - Fail

## Units with RECIRC option

Serial Number	Serial Number	Serial Number	Serial Number	Serial Number
17-03V-16657	18-08V-17658	18-10V-17809	18-11V-17925	19-01V-18033
17-11V-17085	18-08V-17659	18-10V-17810	18-11V-17931	19-01V-18040
17-11V-17094	18-08V-17668	18-10V-17817	18-11V-17934	19-01V-18041
17-11V-17098	18-08V-17671	18-10V-17820	18-11V-17939	19-01V-18045
17-11V-17100	18-08V-17672	18-10V-17826	18-11V-17940	19-01V-18046
17-11V-17104	18-08V-17674	18-10V-17829	18-11V-17951	19-01V-18049
17-11V-17109	18-08V-17677	18-10V-17832	18-11V-17952	19-01V-18050
17-12V-17152	18-08V-17686	18-10V-17834	18-11V-17954	19-01V-18051
18-01V-17169	18-08V-17690	18-10V-17835	18-12V-17949	19-01V-18058
18-02V-17251	18-08V-17701	18-10V-17836	18-12V-17955	19-01V-18063
18-02V-17251	18-08V-17703	18-10V-17839	18-12V-17956	19-01V-18071
18-06V-17548	18-08V-17704	18-10V-17840	18-12V-17957	19-01V-18075
18-06V-17553	18-08V-17706	18-10V-17849	18-12V-17958	19-01V-18077
18-06V-17554	18-08V-17708	18-10V-17850	18-12V-17960	19-01V-18087
18-06V-17563	18-08V-17709	18-10V-17851	18-12V-17962	19-01V-18090
18-06V-17565	18-08V-17712	18-10V-17852	18-12V-17963	19-01V-18091
18-06V-17568	18-08V-17732	18-10V-17853	18-12V-17965	19-01V-18107
18-06V-17571	18-08V-17734	18-10V-17854	18-12V-17966	19-01V-18108
18-06V-17576	18-08V-17735	18-10V-17855	18-12V-17968	19-01V-18119
18-06V-17578	18-08V-17738	18-10V-17858	18-12V-17971	19-02V-18094
18-06V-17580	18-08V-17739	18-10V-17867	18-12V-17973	19-02V-18098
18-07V-17591	18-09V-17743	18-10V-17868	18-12V-17978	19-02V-18100
18-07V-17592	18-09V-17746	18-10V-17870	18-12V-17979	19-02V-18110
18-07V-17593	18-09V-17748	18-10V-17871	18-12V-17981	19-02V-18112
18-07V-17596	18-09V-17752	18-10V-17872	18-12V-17983	19-02V-18116
18-07V-17598	18-09V-17753	18-10V-17876	18-12V-17984	19-02V-18117
18-07V-17601	18-09V-17756	18-10V-17881	18-12V-17992	19-02V-18120
18-07V-17605	18-09V-17757	18-11V-17892	18-12V-18000	19-02V-18121
18-07V-17614	18-09V-17758	18-11V-17893	18-12V-18002	19-02V-18123
18-07V-17615	18-09V-17765	18-11V-17894	18-12V-18003	19-02V-18130
18-07V-17616	18-09V-17767	18-11V-17897	18-12V-18004	19-02V-18133
18-07V-17617	18-09V-17769	18-11V-17898	18-12V-18005	19-02V-18137
18-07V-17618	18-09V-17775	18-11V-17899	18-12V-18006	19-02V-18138
18-07V-17619	18-09V-17776	18-11V-17900	18-12V-18007	19-02V-18140
18-07V-17620	18-09V-17777	18-11V-17901	18-12V-18009	19-02V-18142
18-07V-17621	18-09V-17779	18-11V-17903	19-01V-18014	19-02V-18143
18-07V-17634	18-09V-17781	18-11V-17909	19-01V-18015	19-02V-18145
18-07V-17636	18-09V-17784	18-11V-17910	19-01V-18016	19-02V-18146
18-07V-17637	18-09V-17795	18-11V-17912	19-01V-18018	19-02V-18149
18-07V-17639	18-09V-17796	18-11V-17913	19-01V-18019	19-02V-18152
18-07V-17640	18-09V-17797	18-11V-17916	19-01V-18020	19-02V-18153
18-07V-17641	18-09V-17798	18-11V-17917	19-01V-18024	19-02V-18163
18-07V-17642	18-09V-17799	18-11V-17919	19-01V-18032	19-02V-18166
18-08V-17646	18-09V-17800	18-11V-17922		19-02V-18167



## Units with RECIRC option

Serial Number
19-02V-18169
19-02V-18170
19-03V-18178
19-03V-18179
19-03V-18181
19-03V-18185
19-03V-18186
19-03V-18188
19-03V-18189
19-03V-18191
19-03V-18194
19-03V-18197
19-03V-18204
19-03V-18208
19-03V-18209
19-03V-18214
19-03V-18215
19-03V-18217
19-03V-18218
19-03V-18219
19-03V-18221
19-03V-18223
19-03V-18224
19-03V-18228
19-03V-18229
19-03V-18231
19-03V-18233
19-03V-18234
19-03V-18238
19-03V-18242
19-03V-18246
19-03V-18248
19-03V-18252
19-04V-18255
19-04V-18256
19-04V-18258
19-04V-18259
19-04V-18261
19-04V-18263
19-04V-18264
19-04V-18266
19-04V-18269
19-04V-18270
19-04V-18273

Serial Number
19-04V-18274
19-04V-18278
19-04V-18279
19-04V-18281
19-04V-18286
19-04V-18288
19-04V-18289
19-04V-18291
19-04V-18292
19-04V-18294
19-04V-18295
19-04V-18300
19-04V-18301
19-04V-18303
19-04V-18308
19-04V-18312
19-04V-18321
19-04V-18322
19-04V-18325
19-04V-18328
19-04V-18337
19-04V-18339
19-04V-18340
19-05V-18343
19-05V-18355
19-05V-18357
19-05V-18360
19-05V-18361
19-05V-18362
19-05V-18364
19-05V-18372
19-05V-18375
19-05V-18376
19-05V-18377
19-05V-18379
19-05V-18380
19-05V-18383
19-05V-18384
19-05V-18388
19-05V-18389
19-05V-18393
19-05V-18394
19-05V-18399
19-05V-18400

Serial Number
19-05V-18401
19-05V-18403
19-05V-18407
19-05V-18408
19-05V-18410
19-05V-18412
19-05V-18413
19-05V-18421
19-05V-18422
19-05V-18424
19-05V-18425
19-05V-18429
19-05V-18431
19-05V-18433
19-05V-18434
19-05V-18455
19-06V-18437
19-06V-18438
19-06V-18439
19-06V-18442
19-06V-18446
19-06V-18447
19-06V-18448
19-06V-18449
19-06V-18450
19-06V-18452
19-06V-18453
19-06V-18459
19-06V-18463
19-06V-18466
19-06V-18467
19-06V-18470
19-06V-18471
19-06V-18472
19-06V-18473
19-06V-18477
19-06V-18479
19-06V-18482
19-06V-18483
19-06V-18487
19-06V-18488
19-06V-18490
19-06V-18493
19-06V-18494

Serial Number
19-06V-18495
19-06V-18496
19-06V-18500
19-06V-18501
19-06V-18505
19-06V-18506
19-06V-18511
19-06V-18515
19-06V-18516
19-06V-18517
19-06V-18518
19-06V-18522
19-06V-18523
19-07V-18528
19-07V-18533
19-07V-18534
19-07V-18539
19-07V-18541
19-07V-18546
19-07V-18547
19-07V-18548
19-07V-18550
19-07V-18551
19-07V-18553
19-07V-18559
19-07V-18560
19-07V-18564
19-07V-18565
19-07V-18566
19-07V-18567
19-07V-18571
19-07V-18575
19-07V-18577
19-07V-18578
19-07V-18579
19-07V-18587
19-07V-18588
19-07V-18589
19-07V-18592
19-07V-18593
19-07V-18594
19-07V-18600
19-08V-18608
19-08V-18612

Serial Number
19-08V-18614
19-08V-18615
19-08V-18616
19-08V-18618
19-08V-18622
19-08V-18624
19-08V-18625
19-08V-18630
19-08V-18631
19-08V-18636
19-08V-18638
19-08V-18639
19-08V-18642
19-08V-18643
19-08V-18645
19-08V-18654
19-08V-18657
19-08V-18658
19-08V-18663
19-08V-18664
19-08V-18665
19-08V-18666
19-08V-18671
19-08V-18675
19-08V-18676
19-08V-18678
19-08V-18679
19-08V-18684
19-08V-18685
19-08V-18686
19-08V-18692
19-08V-18694
19-09V-18705
19-09V-18706
19-09V-18709
19-09V-18710
19-09V-18712
19-09V-18717
19-09V-18720
19-09V-18721
19-09V-18723
19-09V-18724
19-09V-18732
19-09V-18733

## Units with RECIRC option

Serial Number	Serial Number	Serial Number
19-09V-18734	19-10V-18872	19-12V-19008
19-09V-18737	19-10V-18873	19-12V-19011
19-09V-18738	19-10V-18880	19-12V-19014
19-09V-18742	19-10V-18881	19-12V-19015
19-09V-18744	19-10V-18885	19-12V-19017
19-09V-18745	19-10V-18889	19-12V-19018
19-09V-18751	19-11V-18894	19-12V-19025
19-09V-18752	19-11V-18896	19-12V-19028
19-09V-18753	19-11V-18900	19-12V-19029
19-09V-18755	19-11V-18901	19-12V-19032
19-09V-18760	19-11V-18902	19-12V-19033
19-09V-18765	19-11V-18904	20-01V-19039
19-09V-18770	19-11V-18905	20-01V-19040
19-09V-18774	19-11V-18909	20-01V-19043
19-09V-18775	19-11V-18916	20-01V-19044
19-09V-18776	19-11V-18917	20-01V-19047
19-09V-18779	19-11V-18919	20-01V-19048
19-09V-18784	19-11V-18920	20-01V-19049
19-09V-18786	19-11V-18928	20-01V-19052
19-09V-18787	19-11V-18929	20-01V-19053
19-10V-18791	19-11V-18932	20-01V-19054
19-10V-18792	19-11V-18936	20-01V-19059
19-10V-18794	19-11V-18937	20-01V-19069
19-10V-18796	19-11V-18944	20-01V-19070
19-10V-18809	19-11V-18945	20-01V-19072
19-10V-18812	19-11V-18946	20-01V-19073
19-10V-18817	19-11V-18951	20-01V-19074
19-10V-18818	19-11V-18954	20-01V-19075
19-10V-18821	19-11V-18955	20-01V-19076
19-10V-18822	19-11V-18957	20-01V-19080
19-10V-18824	19-11V-18959	20-01V-19084
19-10V-18831	19-11V-18960	
19-10V-18833	19-11V-18966	<b>Vector Demo</b>
19-10V-18836	19-11V-18971	<b>Units</b>
19-10V-18841	19-11V-18974	17-05v-16730
19-10V-18843	19-12V-18976	19-08v-18644
19-10V-18845	19-12V-18979	19-02v-18125
19-10V-18846	19-12V-18983	
19-10V-18851	19-12V-18985	
19-10V-18858	19-12V-18986	
19-10V-18861	19-12V-18991	
19-10V-18862	19-12V-18996	
19-10V-18865	19-12V-18997	
19-10V-18871	19-12V-19001	

## Units without RECIRC option

Serial Number
17-11V-17080
17-11V-17112
18-06V-17579
18-07V-17603
18-08V-17663
18-08V-17664
18-08V-17715
18-08V-17736
18-09V-17724
18-09V-17725
18-09V-17726
18-09V-17744
18-09V-17755
18-09V-17762
18-09V-17764
18-09V-17766
18-09V-17768
18-09V-17782
18-10V-17813
18-10V-17814
18-10V-17821
18-10V-17822
18-10V-17823
18-10V-17824
18-10V-17859
18-10V-17863
18-10V-17869
18-10V-17873
18-10V-17877
18-11V-17878
18-11V-17883
18-11V-17887
18-11V-17888
18-11V-17889
18-11V-17890
18-11V-17904
18-11V-17924
18-11V-17932
18-11V-17933
18-11V-17935
18-11V-17936
18-11V-17937
18-11V-17938
18-11V-17950

Serial Number
18-11V-17953
18-12V-17972
18-12V-17975
18-12V-17977
18-12V-17989
18-12V-17990
18-12V-17991
18-12V-17995
18-12V-18001
19-01V-18017
19-01V-18021
19-01V-18022
19-01V-18023
19-01V-18025
19-01V-18037
19-01V-18055
19-01V-18060
19-01V-18064
19-01V-18065
19-01V-18069
19-01V-18074
19-01V-18082
19-01V-18084
19-01V-18088
19-01V-18105
19-02V-18102
19-02V-18103
19-02V-18113
19-02V-18122
19-02V-18127
19-02V-18129
19-02V-18134
19-02V-18148
19-02V-18151
19-02V-18161
19-02V-18171
19-03V-18182
19-03V-18192
19-03V-18193
19-03V-18196
19-03V-18200
19-03V-18205
19-03V-18212
19-03V-18235

Serial Number
19-03V-18237
19-03V-18241
19-03V-18245
19-03V-18251
19-04V-18267
19-04V-18268
19-04V-18304
19-04V-18307
19-04V-18309
19-04V-18311
19-04V-18324
19-04V-18329
19-04V-18330
19-04V-18331
19-04V-18332
19-04V-18333
19-04V-18336
19-05V-18342
19-05V-18348
19-05V-18349
19-05V-18350
19-05V-18352
19-05V-18354
19-05V-18366
19-05V-18367
19-05V-18371
19-05V-18404
19-05V-18409
19-05V-18411
19-05V-18417
19-05V-18418
19-06V-18441
19-06V-18456
19-06V-18464
19-06V-18478
19-06V-18503
19-06V-18507
19-06V-18509
19-06V-18510
19-06V-18514
19-07V-18531
19-07V-18532
19-07V-18535
19-07V-18542

Serial Number
19-07V-18554
19-07V-18556
19-07V-18568
19-07V-18574
19-07V-18581
19-07V-18590
19-07V-18597
19-07V-18601
19-07V-18602
19-08V-18603
19-08V-18605
19-08V-18607
19-08V-18611
19-08V-18619
19-08V-18632
19-08V-18634
19-08V-18635
19-08V-18651
19-08V-18653
19-08V-18662
19-08V-18667
19-08V-18668
19-08V-18672
19-08V-18682
19-08V-18683
19-08V-18691
19-09V-18713
19-09V-18716
19-09V-18735
19-09V-18736
19-09V-18741
19-09V-18749
19-09V-18750
19-09V-18761
19-09V-18762
19-09V-18764
19-09V-18769
19-09V-18777
19-09V-18785
19-10V-18793
19-10V-18797
19-10V-18799
19-10V-18801
19-10V-18802

Serial Number
19-10V-18805
19-10V-18810
19-10V-18814
19-10V-18825
19-10V-18827
19-10V-18828
19-10V-18830
19-10V-18844
19-10V-18855
19-10V-18857
19-10V-18863
19-10V-18867
19-10V-18868
19-10V-18875
19-10V-18876
19-10V-18883
19-10V-18884
19-11V-18892
19-11V-18893
19-11V-18897
19-11V-18898
19-11V-18907
19-11V-18908
19-11V-18914
19-11V-18915
19-11V-18941
19-11V-18953
19-11V-18969
19-11V-18970
19-11V-18973
19-12V-18978
19-12V-18984
19-12V-18990
19-12V-18993
19-12V-18994
19-12V-19000
19-12V-19005
19-12V-19007
19-12V-19012
19-12V-19024
19-12V-19030
20-01V-19055
20-01V-19056