



SIB 65 25 19

2021-04-20

RECALL 19V-853: DRIVER'S FRONT AIR BAG (NADI) INFLATOR

This Service Information Bulletin (Revision 12) replaces SI B65 25 19 **dated April 2021**.

What's New (Specific text highlighted):

- Procedure
- Warranty defect code text correction

Please perform the procedure outlined in this Service Information on all affected vehicles before customer delivery. In the event the customer has already taken delivery of the vehicle, please perform the procedure the next time the vehicle is in the shop.

MODEL

E-Series	Model Description	Production Date
E46	3 Series Sedan, Coupe, Sports Wagon	May 20, 1999 – July 14, 2000

AFFECTED VEHICLES

Vehicles which require this Recall Campaign to be completed will show it as "Open" when checked either in AIR, the "Service Menu" of DCSnet (Dealer Communication System), ISPA Next or Warranty Vehicle Inquiry.

SITUATION

BMW AG is conducting a Voluntary Safety Recall (effective December 4, 2019) on certain Model Year 1999 through 2001 BMW 3 Series vehicles that were produced between May 1999 and July 2000. Please see attached Recall Notice and Q&A for further information.

This recall campaign involves vehicles equipped with the single-stage Takata Non-Azide (NADI) Driver gas generator/Inflator. There are three separate recalls involving the NADI units.

Recall ID	SIB No.	DCs	Recall Description
19V-851	B65 23 19	32 34 90 03 00; or 00 32 97 02 00	Driver's Front Air Bag (NADI) Inflator-STOP DRIVE
19V-852	B65 24 19	32 34 90 03 00; or 00 32 98 02 00	Driver's Front Air Bag (NADI) Inflator
19V-853	B65 25 19	32 34 90 03 00; or 00 32 96 02 00	Driver's Front Air Bag (NADI) Inflator-Spare Parts

At this time we only have a limited supply of parts. Please refer to the weekly Parts Matrix for updates.

We will update this bulletin as soon as additional information is available.

OTHER AIR BAG-RELATED FAULTS AND REPAIRS

This Recall applies to an operational driver's front air bag. The issue addressed will not cause an air bag (SRS) malfunction light to illuminate. It will also not prevent the system from deploying in a front-end collision.

However, a recalled vehicle can arrive at your center with an air bag malfunction light illuminated.

It is important to notify the customer that diagnosing other air bag-related system issues may be required and this diagnosis and corresponding repair work, **if needed, is not covered by this Recall**.

In this case, replacing the driver's front air bag gas generator will not correct the other fault code(s).

CAUSE

The single-stage Takata Non-Azide (NADI) Driver gas generator, also known as an air bag inflator, may have been produced with an insufficient seal that could allow moisture to enter the gas generator. The gas generator is a separately replaceable part of the air bag module.

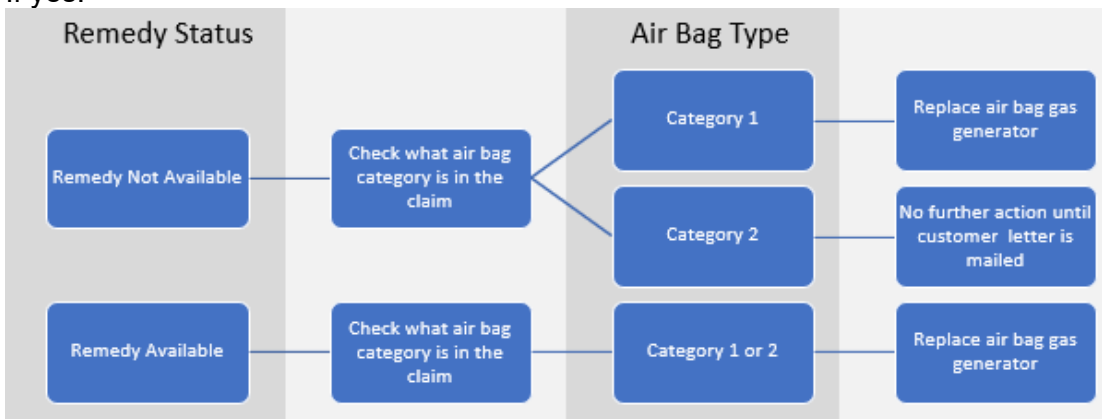
CORRECTION

The current installed air bag gas generator must be inspected.

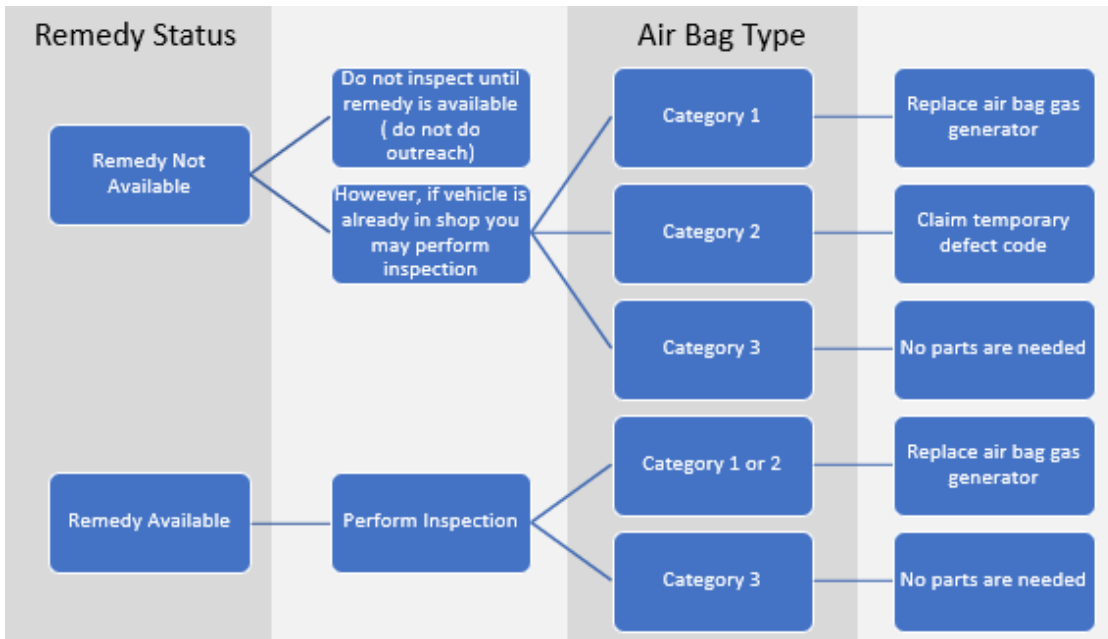
The serial number on the installed air bag gas generator must be compared to the serial number list in the procedure section to determine if the gas generator needs to be replaced.

Note: Before proceeding with the Recall air bag inspection procedure, please review the Repair History (Claims) section first in the DCSnet Warranty Inquiry for the affected vehicle to see if: **DC 32 34 90 03 00 (Preliminary Inspection Only - Later Replacement is Required) has already been claimed.**

If yes:



If No:

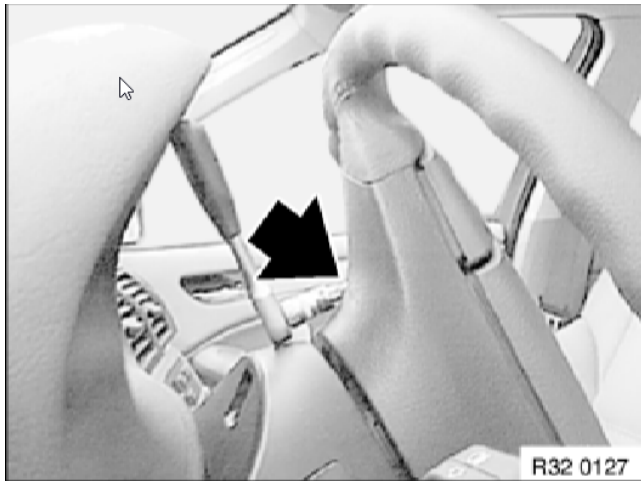


In the following cases, the gas generator replacement should not be performed. Instead, the complete air bag assembly must be replaced:

- Threaded bolts are damaged
- Threaded bolts are bent or corroded
- The generator cannot be removed from the air bag without excess force
- If the target tightening torque of the nuts cannot be achieved (5 Nm in a star pattern sequence)
- If there is a gap between the generator & air bag that is not closed up when tightening the nuts
- If there is damage to the air bag cover that may impede deployment of the air bag

If an entire air bag assembly is required but parts are not available, please contact BMW Customer Relations at 1-800-525-7417 for further support.

PROCEDURE

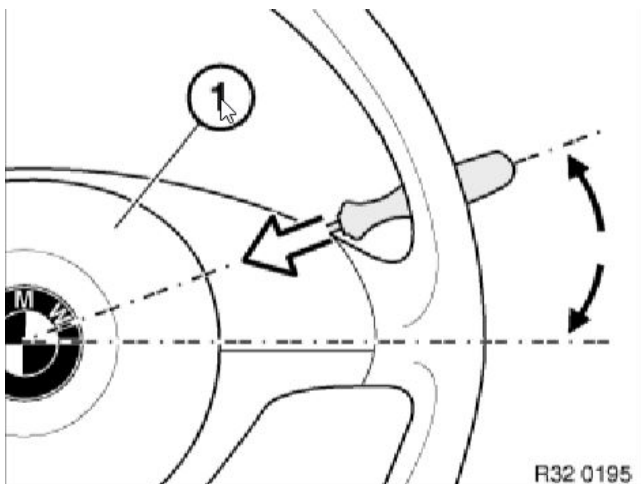


Follow all safety precautions when handling air bags.

Remove **Basic Drivers air bag** as per

REP 32 34 020 "Removing and installing/replacing air bag unit"

OR

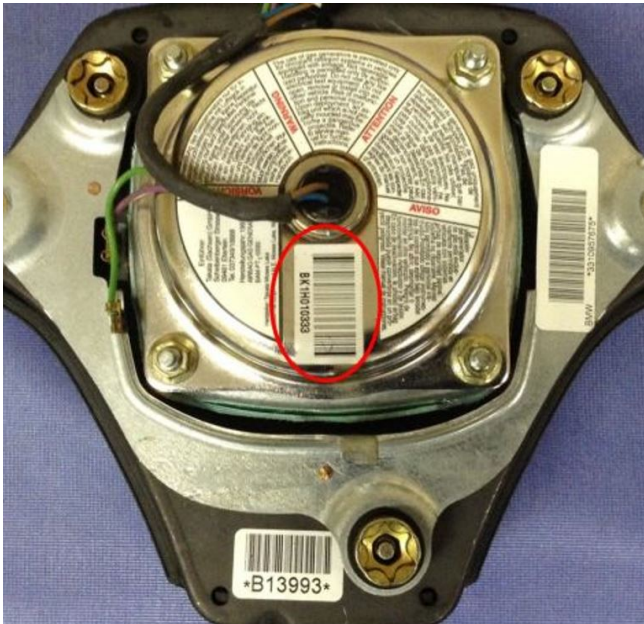
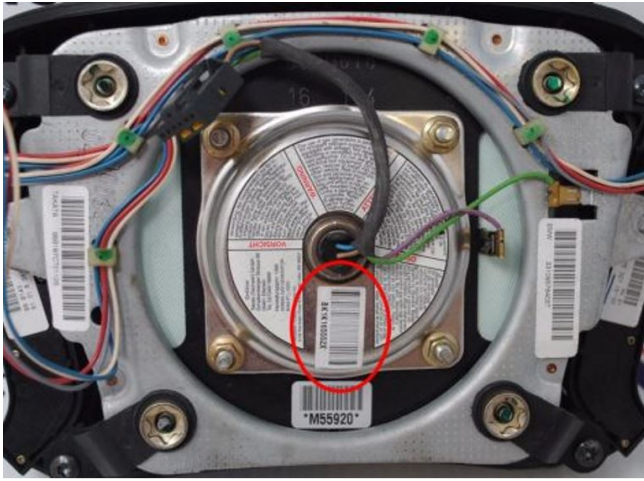


Remove **Sports Drivers air bag** as per

REP 32 34 020 "Removing and installing/replacing the air bag unit (sports steering wheel, inserted air bag unit)"

Once the air bag is removed and the wiring is disconnected, turn air bag over to read the parts label(s) on the gas generator on the back.

Basic Driver's air bag, showing the location of the parts label.



Sport Driver's air bag, showing the location of the parts label.

	<p>Gas generator serial number decoding:</p> <p>Digits 1-2 = Type of gas generator Digit 3 = Production Line Digit 4 = Production year Digit 5-11* = Serial #</p> <p>*NOTE: The serial number can have 10 or 11 characters. Only the first 10 characters counted from the left are relevant for the check. The 11th digit can be disregarded for the repair covered by this SIB</p>
	<p>EXAMPLE 1: Gas Generator Parts Label</p> <p>All BK1H are Category 2</p>



EXAMPLE 2: Gas Generator Parts Label

BKCJ may fall under two categories:

Up to 059642	Category 1 – Drivers air bag gas generator must be replaced; the vehicle cannot be driven until repaired.
From 059659	Category 2 – Drivers air bag gas generator must be replaced

This example is **1059652** which is a higher serial number than 059659 so this is **Category 2**

***NOTE: The serial number can have 10 or 11 characters. Only the first 10 characters counted from the left are relevant for the check. The 11th digit can be disregarded for the repair covered by this SIB, so ignore the last digit 2**



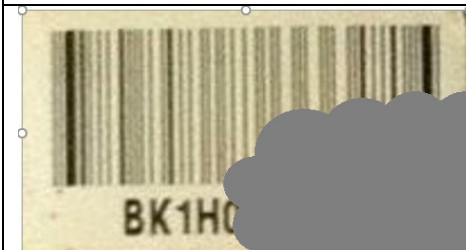
EXAMPLE 3: Gas Generator Parts Label

BK1K may fall under two categories:

Up to 088984	Category 2 – Drivers air bag gas generator must be replaced
From 088992	Category 3 – Drivers air bag gas generator is OK

This example is 11 digits and **386101S** is above 088992 so this is **Category 3**

***NOTE: The serial number can have 10 or 11 characters. Only the first 10 characters counted from the left are relevant for the check. The 11th digit can be disregarded for the repair covered by this SIB, so ignore the letter S**



If the serial number is not legible or the driver air bag gas-generator (not type BK) cannot be identified, submit a TSARA case for support. Title the TSARA case **NADI TAKATA RECALL 19V-853**.

Some vehicles may have air bag control unit



MRS III which was introduced in some models starting September 1999 and supports a dual stage gas generator.

Standard steering wheel gas generator pictured. Takata air bags with different chemical compositions (white label) are not affected by this recall and DO NOT need to be replaced. **Reinstall the driver's air bag.** This is **Category 3**.



Some vehicles may have air bag control unit MRS III which was introduced in some models starting September 1999 and supports a dual stage gas generator

Sport steering wheel gas generator pictured.

These gas generators are **Category 2** and must be replaced. See [SI B65 02 17](#) for parts information.

Submit an INFO ONLY TSARA case to document this repair.

To see the repair category of your air bag gas generator, refer to the table below.

Descriptions of each category are shown below the table.

Digits 1-3	Digit 4	Digit 5-10	Repair Category
BKC	H	ALL	Category 1 – Drivers air bag gas generator must be replaced; the vehicle cannot be driven until repaired.
BKC	J	Up to 059642	Category 1 - Drivers air bag gas generator

			must be replaced; the vehicle cannot be driven until repaired.
		From 059659	Category 2 -Drivers air bag gas generator must be replaced
BK1	H	ALL	Category 2 – Drivers air bag gas generator must be replaced
BK1	J	ALL	Category 2 – Drivers air bag gas generator must be replaced
BK1	K	Up to 088984	Category 2 – Drivers air bag gas generator must be replaced
		From 088992	Category 3 – Drivers air bag gas generator is OK
BK1	L M N P Q R U V	ALL	Category 3 – Drivers air bag gas generator is OK
BK5	-	ALL	Category 3 – Drivers air bag gas generator is OK
BKV	-	ALL	Category 3 – Drivers air bag gas generator is OK

Category	Part	Defect Code*	Steps
1	Air Bag Gas Generator	Final Repair: 00 32 96 02 00	<ul style="list-style-type: none"> The serial number of the checked gas-generator AND the new gas-generator must both be stated on the repair order and in the comments section of the warranty claim. Refer to SI B65 03 20 for details on how to replace a gas generator. See the attached Checklist for gas generator replacement.
	Complete Air Bag Assembly Needed	Final Repair: 00 32 96 02 00	<ul style="list-style-type: none"> The serial number of the checked gas-generator AND the new gas-generator must both be stated on the repair order and in the comments section of the warranty claim along with the reason you cannot replace the gas generator only.
	Complete Air Bag Assembly Needed	Temporary: 32 34 90 03 00	<ul style="list-style-type: none"> If an entire air bag assembly is required but parts are not available, please contact BMW Customer Relations at 1-800-525-7417 for further support. The serial number of the checked gas-generator must be stated on the repair order and in the comments section of the warranty claim along with the reason you cannot replace the gas generator only.
Category	Part	Defect Code	Steps
2	Air Bag Gas Generator	Final Repair: 00 32 96 02 00	<ul style="list-style-type: none"> The serial number of the checked gas-generator AND the new gas-generator must both be stated on the repair order and in the comments section of the warranty claim. Refer to SI B65 03 20 for details on how to replace a gas generator. See the attached Checklist for gas generator replacement.
	Complete Air Bag Assembly Needed	Final Repair: 00 32 96 02 00	<ul style="list-style-type: none"> The serial number of the checked gas-generator AND the new gas-generator must both be stated on the repair order and in the comments section of the warranty claim along with the reason you cannot replace the gas generator only.
	Complete Air Bag Assembly Needed	Temporary: 32 34 90 03 00	<ul style="list-style-type: none"> If an entire air bag assembly is required but parts are not available, please contact BMW Customer Relations at 1-800-525-7417 for further support. The serial number of the checked gas-generator must be stated on the repair order and in the comments section of the warranty

			claim along with the reason you cannot replace the gas generator only.
Category	Part	Defect Code	Steps
3	No part needed	Final Repair: 00 32 96 02 00	<ul style="list-style-type: none"> The air bag is OK and it can be reinstalled. The serial number of the checked gas-generator must be stated on the repair order and in the comments section of the warranty claim.

* It is very important to claim on the correct defect code so we know which vehicles still need a part when parts become available.

PARTS INFORMATION

Please refer to the Parts Matrix for the ordering procedure.

Only use and invoice the part numbers below that apply.

Performing a part number look-up in ETK (EPC) by VIN or model in place of using/invoicing the following part numbers may result with the wrong part numbers being invoiced and installed. This could delay the payment of claim.

Part Number	Description	Quantity
32 30 5 A1B D99	Gas Generator repair kit	1

If a complete air bag is needed as per the CORRECTION section above:

- Please order the parts only for a specific VIN only and not for stock.
- In the Warranty Comments section of your claim you must let us know what is preventing you from replacing the gas generator.
- Parts returned under this recall are subject to inspection to confirm the correct repair was performed.

Part Number	Description	Quantity
32 34 5 A1B DB4	Standard air bag unit WITHOUT multifunction switches	1 (if required)
32 34 5 A1B DB5	Standard air bag unit WITH multifunction switches	1 (if required)
32 34 5 A1B DB3	Air bag unit, sports steering wheel	1 (if required)

PARTS RETENTION AND RETURN

Recalled parts that are removed from BMW vehicles cannot be used for resale!

The parts replaced to perform and submit for this Recall repair procedure are the property of BMW NA.

Your center is responsible for the proper identification, storage and documentation of these parts. They must be held in a secure retention area until notification of claim payment is made by BMW NA through DCSnet.

Upon claim payment and based on the replacement front air bag component part number claimed, a DCSnet part return tag will be generated with special handling instructions.

- Please DO NOT return these recalled air bag components to the Warranty Parts Return Center (WPRC).

Inflatable air bags are classified as dangerous goods by the Department of Transportation (DOT) and require special preparation, packing and labeling for transport.

Your center is responsible for following all rules and regulations that apply to shipping dangerous goods as described in the attachment.

A shipping procedure has been created for returning the replaced air bag modules directly to Takata. There is also a procedure available for Bulk Shipping 15 or more air bag modules at one time to Takata.

These procedures are contained in the Part Return Program Instructions and Bulk Ship PDF attachments to this bulletin; please read both of them. Effective immediately, please use the following email address when scheduling bulk shipment returns to Takata:

Scfieldaction.14305@xpo.com

The parts are to be packaged in the same packaging that the new part arrived in for shipment back to Takata.

The returns pickup schedule has been changed from weekly to every two weeks (bi-weekly).

WARRANTY INFORMATION

Reimbursement for this Service Action will be via normal claim entry utilizing the applicable work package information below, and when applicable, the part number listed above that applies.

Plus work	Vehicle is already in the workshop for another repair
Main work	The vehicle arrives at your center and this Recall Campaign shows open (No other Main work will be performed/claimed during this workshop visit)

Category 1 and 2 vehicles - Inspect the air bag and the gas generator is replaced (Recall is CLOSED)

Defect Code:	0032960200	E46 Driver's air bag (NADI - part II)	
:			
Work Pkg	Labor Operation	Description	Labor Allowance
# 1	00 68 975	Checking the driver's air bag and replacing the gas generator (category 1 and 2) (Plus work)	7 FRU
Or:			
# 2	00 68 357	Checking the driver's air bag and replacing the gas generator (category 1 and 2) (Main work)	8 FRU

Category 3 vehicles - Inspection the air bag ONLY, no replacement is required (Recall is CLOSED)

Defect Code:	0032960200	E46 Driver's air bag (NADI - part II)	
:			
Work Pkg	Labor Operation	Description	Labor Allowance
# 3	00 68 808	Only checking the driver's air bag, air bag is OK (category 3), no replacement is necessary (Plus work)	3 FRU
Or:			
# 4	00 68 224	Only checking the driver's air bag, air bag is OK (category 3), no replacement is necessary	5 FRU

(Main work)

Category 2 vehicles – The gas generator repair is wait listed (Recall remains OPEN)

Defect Code:	3234900300	E46 Driver's air bag NADI - test result	
:			
Work Pkg	Labor Operation	Description	Labor Allowance
# 5	00 68 807	Check, the necessary gas generator repair is wait listed (category 2) (Plus work)	3 FRU
Or:			
# 6	00 68 223	Check, the necessary gas generator repair is wait listed (category 2) (Main work)	5 FRU

Category 1 and 2 vehicles – The gas generator repair cannot be performed, future air bag module replacement is required (Recall remains OPEN)

Defect Code:	3234900300	E46 Driver's air bag NADI - test result	
:			
Work Pkg	Labor Operation	Description	Labor Allowance
# 7	00 68 806	Check, the necessary gas generator repair cannot be performed, future driver's air bag module replacement required (category 1 and 2) (Plus work)	3 FRU
Or:			
# 8	00 68 222	Check, the necessary gas generator repair cannot be performed, future driver's air bag module replacement required (category 1 and 2) (Main work)	5 FRU

Category 1 and 2 vehicles - As applicable below, the air bag module complete is replaced (Recall is CLOSED)-

Defect Code:	0032960200	E46 Driver's air bag (NADI - part II)	
:			
Work Pkg	Labor Operation	Description	Labor Allowance
# 9	00 69 564	Replace the driver air bag (module complete, replacement part is available) after abandoning the replacement of the gas generator (category 1 and 2) (Plus work)	4 FRU
Or:			
# 10	00 69 060	Replace the driver air bag (module complete, replacement part is available) after abandoning the replacement of the gas generator (category 1 and 2) (Main work)	5 FRU
Or:			
		Replacing the driver's air bag	

# 11	00 70 639	module (complete, replacement part is available) (category 1 and 2) (Follow-up work after WP # 3 or # 4 was performed and claimed prior/ DC 32 34 90 03 00) (Plus work)	3 FRU
Or:			
# 12	00 70 122	Replacing the driver's air bag module (complete, replacement part is available) (category 1 and 2) (Follow-up work after WP # 3 or # 4 was performed and claimed prior/ DC 32 34 90 03 00) (Main work)	5 FRU

Only one of the flat rate labor operation codes listed above can be used for claim submission/reimbursement purposes. Also, only one Main work flat rate labor operation code can be claimed per workshop visit.

Claim Repair Comments

Only reference the SIB number and the work package (Pkg) number performed in the RO technician notes and the claim comments (For example: B65 25 19 WP 1), unless otherwise required by State law.

Reimbursement of Prior Customer-Pay Repairs (TREAD Act)

With this Technical Campaign, a prior repair reimbursement is not likely. Typically, a customer would have their driver's front air bag module replaced as a result of an accident. In such a case, either an insurance company or the customer themselves paid for the replacement of the above mentioned air bag module in conjunction with the accident repairs. Such cases are not covered by this campaign and are not entitled to reimbursement.

QUESTIONS REGARDING THIS BULLETIN

Technical inquiries	Submit feedback at the top of this bulletin
Warranty inquiries	Please contact the Warranty department by either using the Live Chat that's available in the Warranty Documentation Portal or through IDS by selecting Coverage, Policy, Coding Questions and Mileage Corrections.
Parts inquiries	Submit an IDS ticket to the Parts Department

Supporting Materials

- [picture_as_pdf B65 25 19 REP 32 34 020 R I airbag_sport.pdf](#)
- [picture_as_pdf B652519 Recall Notice.pdf](#)
- [picture_as_pdf B652519 19V-853_E46 DAB QA_4Dec2019.pdf](#)
- [picture_as_pdf B652519 REP.pdf](#)
- [picture_as_pdf B652519 Parts_Return_Program_Instructions.pdf](#)
- [picture_as_pdf B652519 Parts_Bulk_Ship_Return.pdf](#)
- [picture_as_pdf B65 25 19 REP 32 34 020 R I airbag_unit.pdf](#)