



Over the Range Microwave/Vent Hood – venting to outside

| | |
|-----------------------|-------------------------------|
| Bulletin Type: | Safety Recall |
| Recall #: | 19V-700 US 2019-503 Canada |
| Job Code: | 9901500 |
| Flat Rate: | 1.5 hours |

| | |
|--------------------------|---|
| Publication Date: | November 2019 |
| Make: | JAYCO |
| Model(s): | Eagle Travel Trailer Eagle HT Fifth Wheel Eagle Fifth Wheel |
| Model Year: | 2019 |

| | |
|------------------------------------|--|
| Incident: | Microwave/Range Hood venting to outside of the trailer. |
| Affected Units: | <p><u>2019 Eagle Travel Trailer</u> K1EE0050-0064</p> <p><u>2019 Eagle HT Fifth Wheel</u> K1PB0051-0116 PR0051-0188</p> <p><u>2019 Eagle Fifth Wheel</u> K1WA0051-0130 WC0051-0092 WD0051-0087 WK0051-0152 WL0051-0188 WM0051-0099</p> |
| Parts Kit # 19V-700 | <p>1- Vent, RNGHD OUT W/DMPR & COV</p> <p>10 -Screw PH BLK #8 x 1.00"</p> <p>1 - Sleeve, Microwave Vent</p> |
| Misc. Tools & Supplies: | <p>Grease pencil or tape</p> <p>Screw gun with #2 philips bit, and #2 square drive bit</p> <p>Putty knife</p> <p>Pin nailer</p> <p>Putty stick</p> <p>Hole saw 1-1/2"</p> <p>Drill</p> <p>Side cutters</p> <p>Sawzall (reciprocating saw)</p> <p>Geocell MHRV 2300 sealant or equivalent</p> <p>Putty Tape 1/8" x 1.00" x 4 ft</p> |

REPAIR INSTRUCTIONS



FIG 1:

- Over the range microwave that requires the outside vent.

FIG 2:

- Use a grease pencil or pieces of tape, and mark the current location of the microwave.
- Mark the right edge, and also where the bottom rests against the wall.



FIG 3:

- Mark the left edge and where the bottom rests against the wall.

FIG 4:

- Remove the piece of white trim across the top of the microwave opening (arrow).
- Use a putty knife to pry the staples loose. Save this piece for re-installation.



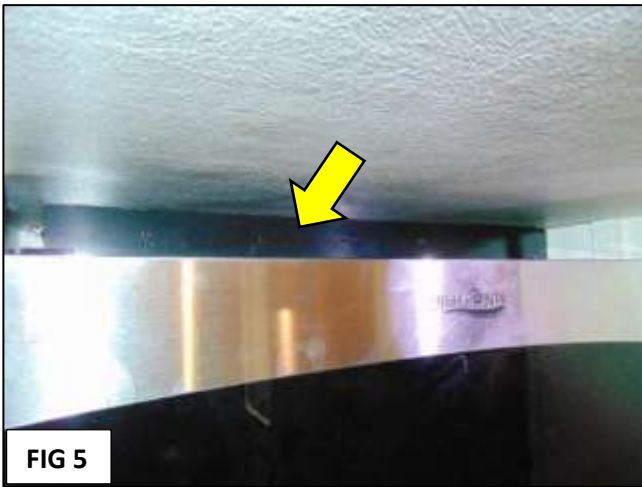


FIG 5:

- Remove the 3 screws holding the black stile in place above the microwave (arrow).
- Remove the stile and save for re-install
- Lift the microwave up and pull it out towards you to remove.
- Pull the cord out of the hole between the cabinets.

FIG 6:

- Turn the microwave around to work on the back panel.

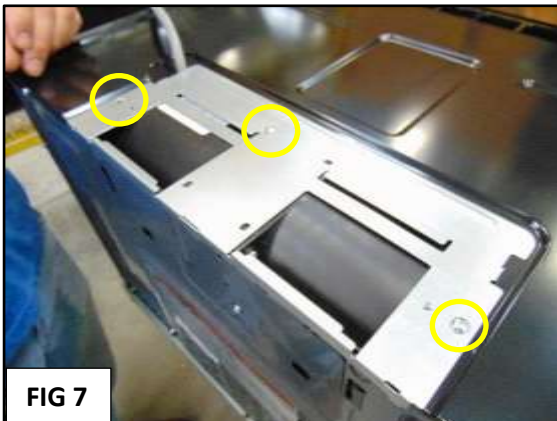


FIG 7:

- Remove 3 Philips screws holding the top bracket in place (circled).
- Slide the top bracket toward the rear of the microwave to remove it.

FIG 8:

- Top bracket removed.
- Remove 1 Philips screw on the rear of the microwave, circled.

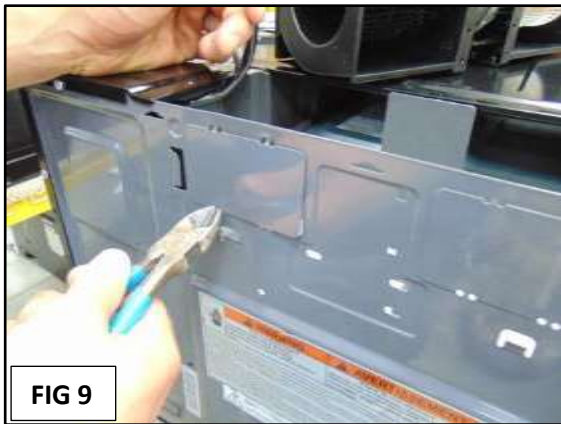


FIG 9:

- Left side plate.
- Remove the knockout plates for the fan motor.

FIG 10:

- Right side plate.
- Use the sidecutters to trim off the small tabs holding the plates in place.

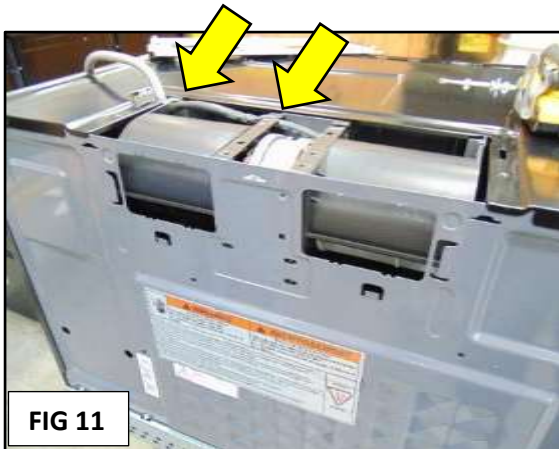


FIG 11:

- Release the motor harness from the two clips holding it in place (arrows).
- The harness should just pull loose.

FIG 12:

- Lift the motor out of the cavity, and rotate it 180 degrees.
- Re-attach the fan harness to the other end of the motor to the 2 clips (circled).



FIG 13:

- Fans are visible in the holes left by the knockout plates.
- Harness will come up in the left corner as shown.

FIG 14:

- Reinstall the single screw to hold the motor in place.

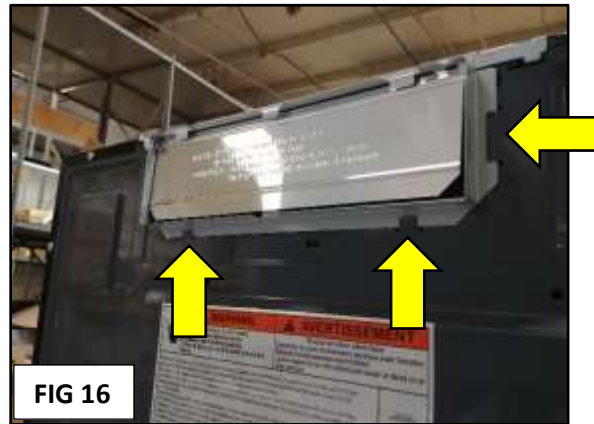
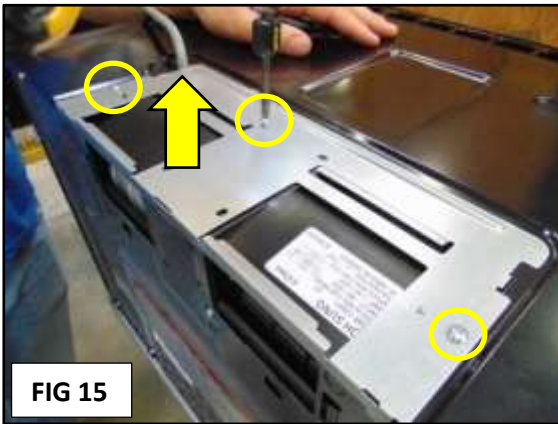


FIG 15:

- Reinstall the top bracket, with the 3 screws.
- Harness will come up in the left hand corner of the top bracket as shown.

FIG 16:

- Place the vent sleeve in slots and secure behind tabs.

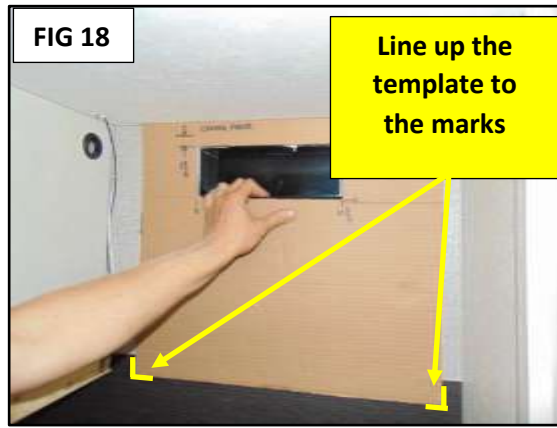


FIG 17:

- Create a template using the measurements on the last page of the instructions.
- The template can be made out of a 19" x 24" scrap piece of cardboard.
- The template will have a rectangular hole, 4" x 10.75".

FIG 18:

- Place the template on the inside of the trailer where the microwave was mounted to the wall.
- Offset the vent cutout to the left, as shown.
- Line up the bottom corners with the marks drawn previously on the wall (**Fig 2 & 3**).
- Marks are represented by the yellow lines on the photo.
- The top of the template should contact the ceiling of the slideout.
- Draw the rectangular hole on the wall.

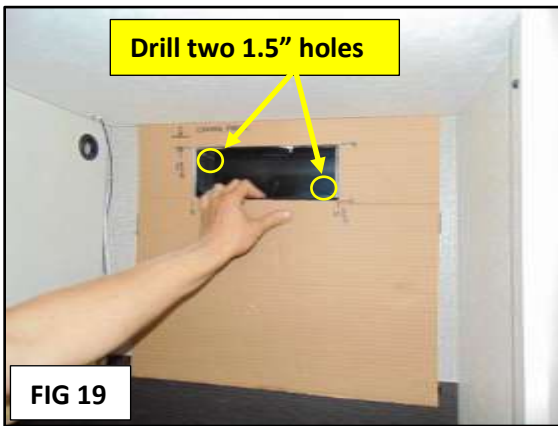


FIG 19:

- Cut out the vent hole 4" x 10.75" as follows:
- Drill two 1.5" holes in opposite corners of the rectangular hole.
- **Make sure the holes are inside the outline of the rectangle!**
- Use a reciprocating saw to cut out the rectangular vent hole starting at one of the 1.5" holes.
- Depending on the model of the trailer, the wall will be 1" to 1.5" thick.

FIG 20:

- Cover the opening in the wall with foil tape. All raw panel edges and styrofoam must be protected.

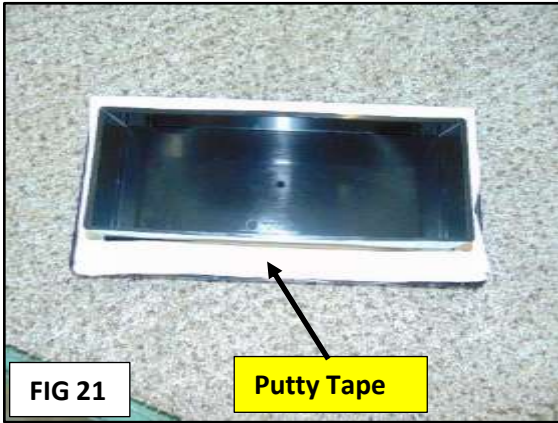


FIG 21:

- Install putty tape (approximately 3.5 to 4 ft) around the inner lip on all four edges of the rangehood vent.



FIG 22:

FIG 22:

- Install the rangehood vent to the outside of the trailer over the rectangular vent hole.

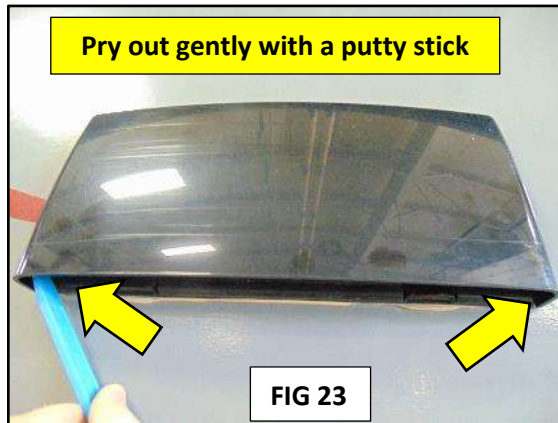


FIG 23:

- To remove the curved vent cover, pry out at the left and right corners at the opening.
- Tabs on each end will unsnap when a little pressure is applied.

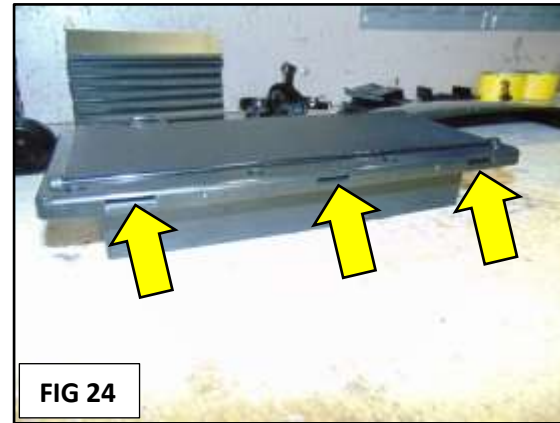


FIG 24:

FIG 24:

- Push the vent upwards and the 3 tabs at the top will pop loose.
- The 3 arrows in the picture show the slots for the tabs on the top of the vent.



FIG 25:

FIG 25:

- The vent should look like this with the curved hood piece removed.



FIG 26:

FIG 26:

- Open the vent, and install ten #8 x 1" screws from the kit to secure the vent to the trailer.
- Trim any excess putty that squeezes out around the vent with a putty stick.

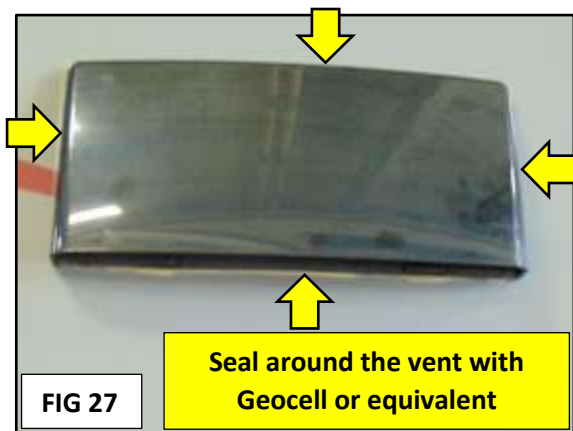


FIG 27:

- Replace the curved hood by sliding back on from the top, then snap the clips on each side at the bottom.
- Use Geocel clear sealant (or equivalent) and seal around all 4 sides of the vent.

FIG 28:

- Replace the microwave back into its location inside the trailer.
- Lift and set the microwave back on the rail on the wall where it was mounted originally.

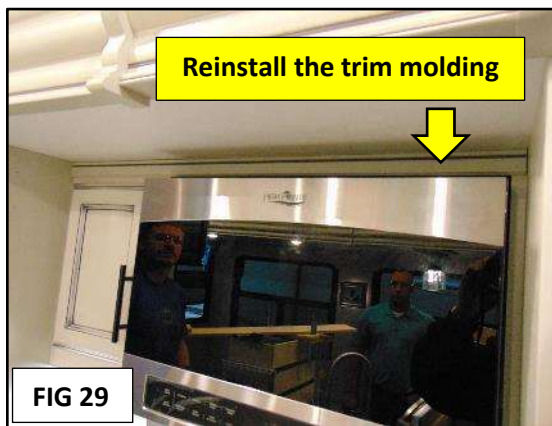
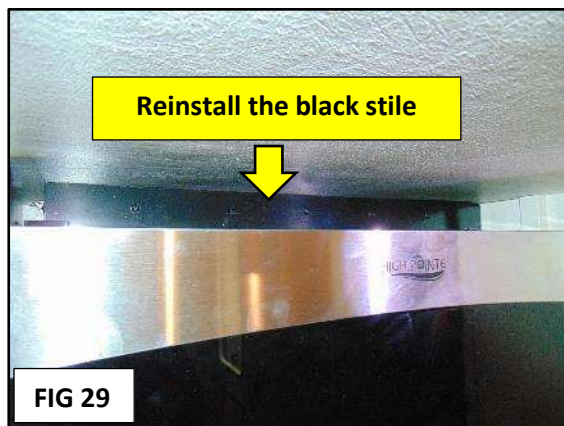


FIG 29:

- Reinstall the black stile above the microwave, and the 3 screws removed previously.

FIG 30:

- **Before reinstalling the trim, test the function of the microwave.**
- Reinstall and staple the trim molding piece above the microwave removed previously.

Jayco's sole obligation under our limited warranty is to repair or replace defective materials and/or workmanship deemed our responsibility as determined by Jayco at our sole discretion. Jayco reserves the right to use new and/or remanufactured parts or materials of similar quality to complete any work, and to make parts and/or design changes as appropriate without notice to anyone. Jayco designs and/or materials changes are done without obligation to incorporate such changes in previously manufactured product. Jayco makes every reasonable effort to ensure field remedies will not adversely affect performance and/or safety of the unit. This field remedy is not intended to extend to future performance of this RV, or any of its materials, components or parts beyond the standard warranty period. The RV owner's obligation to notify Jayco, or one of its independent, authorized dealers, of a claimed defect does not modify any obligation placed on the RV owner to contact Jayco directly when attempting to pursue remedies under state or federal law.

903 South Main Street • P.O. Box 460 • Middlebury, IN 46540 • (574) 825-0608 • Fax: (574) 825-0572

