

SAFETY ADVISORY # 19-358

Morryde Rotating Pin Box

Keystone is conducting a voluntary RECALL notification campaign in accordance with the National Highway Transportation and Safety Act. It has been decided that the vehicles in the recall population have a Morryde Rotating Pin Box and may have been manufactured with improper length bolts that hold the wedge to the pin box. If the Rotating Pin Box is unlocked and allowed to rotate and the wedge is installed with improper length bolts, the wedge may become disconnected from the pin box. This would allow the rotating pin box to pivot in two places which could allow the trailer to come in contact with the truck. This could increase the risk of a crash.

Models Included: 2020 Cruiser Fifth Wheels: 29SI, 27MK, 28RD, 24RL, 29RK

Serial Number Ranges: 2020 L6320022 - L6320115

Parts Required: Contact MorRyde for parts kits if needed – 574-293-1581

Tools Required: - 15/16" socket - Breaker Bar - 250 ft-lb Torque Wrench
- Tape Measure - Impact Gun (optional) - Ratchet (optional)

Note – Check serial number on Key Express to verify the campaign is open. Some vehicles were repaired before they left Keystone.

When performing warranty or recall service, please make certain that appropriate Personal Protective Equipment (PPE) is used.

The remedy is to inspect the length of the Rotating pin box wedge bolts and replace if they do not measure 2".

INSPECTION AND REPAIR INSTRUCTIONS

Step 1

Locate the trailer on a level, flat, hard surface. Chock the wheels.

Step 2

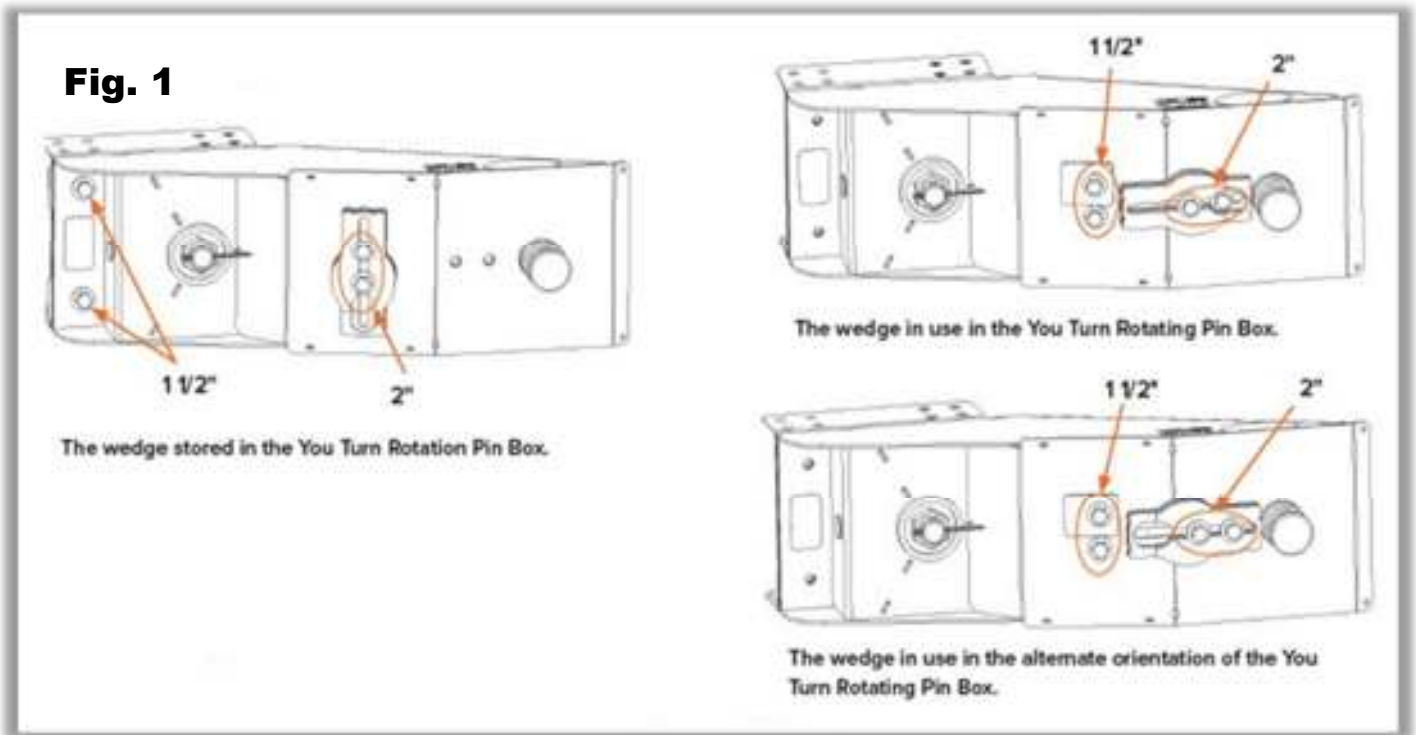
NOTE: The following steps are intended to be performed on one bolt at a time so that if the wedge is installed in the rotation position, it can maintain that position without having to follow the wedge installation instructions in the owner's manual. Locate the Rotating pin box on the front of the unit. Using the breaker bar and 15/16" socket, loosen one of the bolts that hold the wedge in place. Remove the bolt and verify that it is the proper length. The You Turn Rotating Pin Box uses (2) 2" long bolts to hold the wedge in place. See Figure 1.

Step 3

If the bolt that was removed in Step 2 was correct, reinstall the bolt and torque to 200 ft-lbs. If the bolt that was removed in Step 2 was incorrect, contact MORryde to replace it with the correct bolt. Before moving the unit, refer to the Lockout Procedure located after Step 4 only if the wedge has been set up in the rotating position. The pin box will come from the factory in the lock out position. The 2" bolt is UO115-824. Reinstall the bolt and torque to 200 ft-lbs.

Step 4

Repeat Steps 1 & 2 for the remaining bolt for the You Turn Rotating Pin Box. Proceed to Warranty Reimbursement.

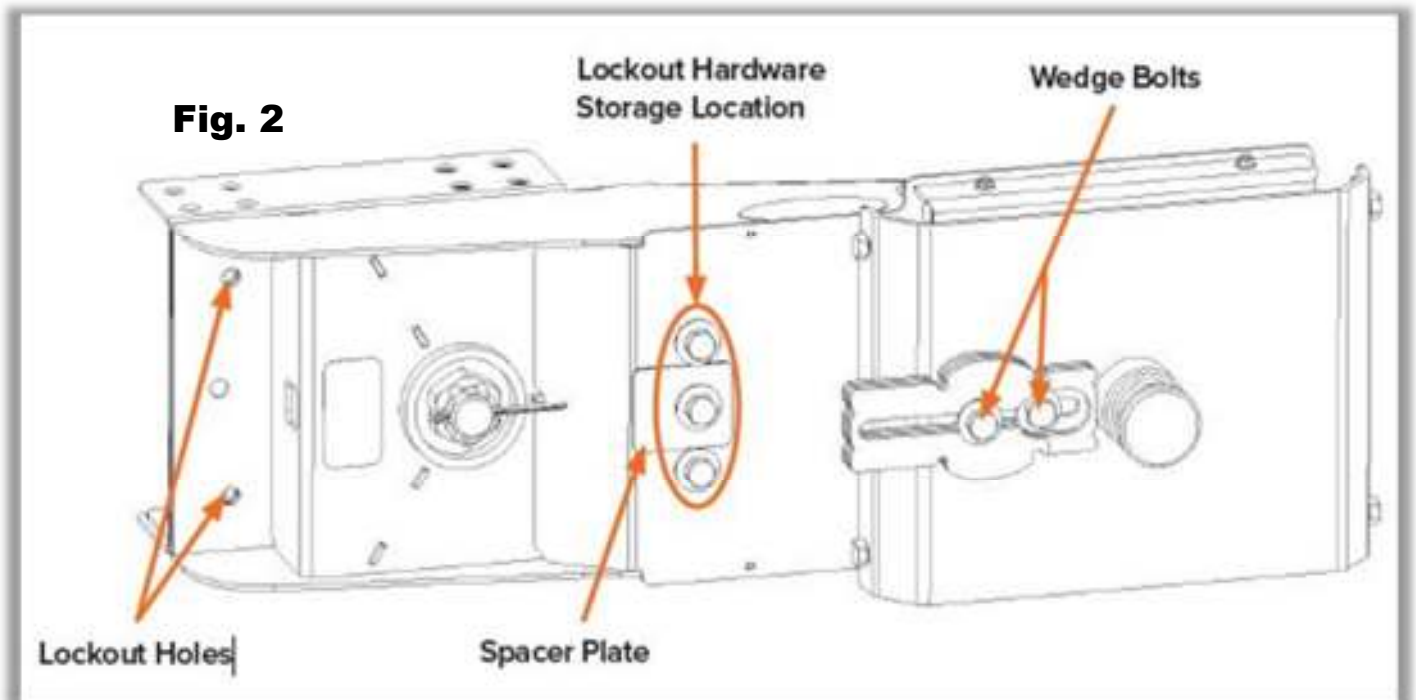


LOCKOUT PROCEDURE

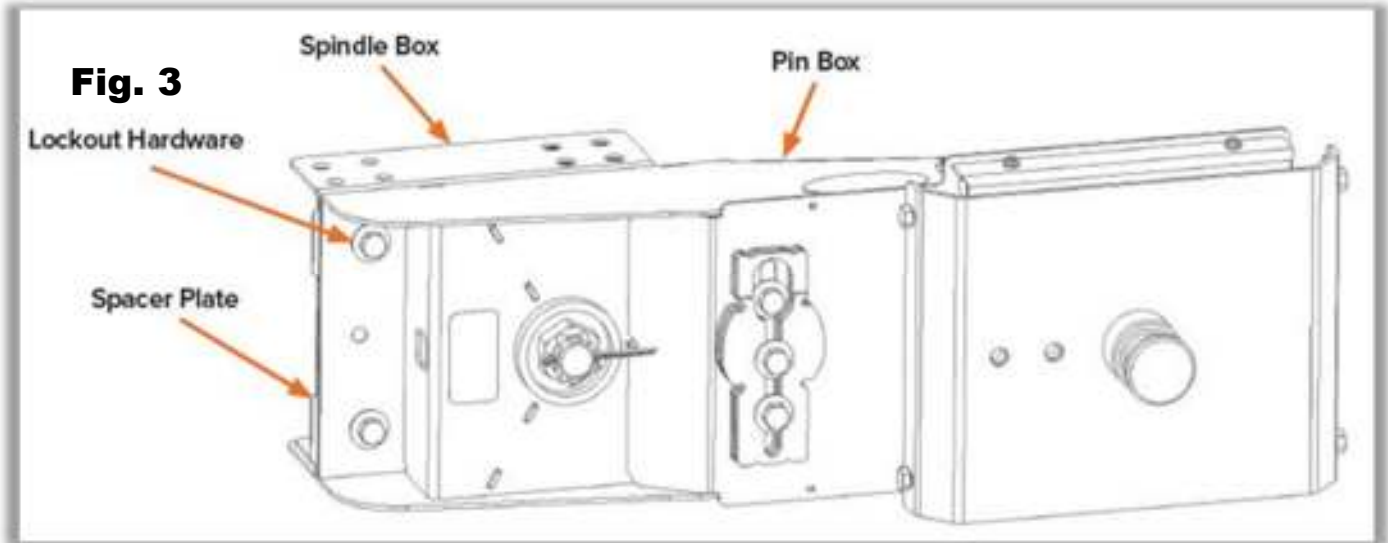
TOOLS REQUIRED: • 15/16" Socket • Breaker Bar • Torque wrench capable of 200ft-lbs

TIME ALLOWED: 30 minutes

Use the socket and breaker bar to loosen the wedge bolts and the bolts that are in the lockout hardware storage location, removing them and the spacer plates.



Place the spacer plates between the spindle box and pin box so that the hole lines up with the lockout holes. Use the two 5/8-18 x 1.5" bolts removed from the storage location with the conical lock washers and hand thread them into the lockout holes. Use the remaining bolts and conical lock washers and hand thread them into the storage location to store the wedge. Set the torque wrench to 200ft-lbs and torque all 5 bolts.



WARRANTY REIMBURSEMENT

INSPECTION and REPAIR

Submit the claim on Key Express using **Flat Rate Code # 7135842F**

In the Complaint section note: Safety Advisory # 19-358

In the Cause section note: Safety Advisory # 19-358

In the Correction section note: Bolts were correct size or Bolts were incorrect size and were acquired from MorRyde

The amount of time authorized for this repair is **.5 hour**. Additional .5 hour for lock out procedure if needed.

PARTS DISPOSITION

No part return.

Please call Keystone RV Customer Service at **844-361-8455** if you have any questions.