



Thor Motor Coach Recall Repair Instructions

| | | | |
|---------------------------|---|--------------------|------------------|
| Recall # | 19V-566 | | |
| Description/Title: | MORryde Battery Tray | | |
| Affected Product Line(s): | Certain MY 2019/2020 Magnitude & Omni motorhomes | | |
| Service Campaign # : | RC000171 | Released Date: | 08/5/2019 |
| Repair Code: | TMCRC80485V | Document Date: | 08/5/2019 |
| Time Allowed: | 1.0 | Document Revision: | A |

Issue:

The battery tray that is welded onto the frame of F550 chassis could be compromised due to inadequate welds. Production run on a specific line at MORryde had inadequate weld applied. The inadequate welds have a potential of failing causing the battery tray to break free from the chassis and allowing the contents of the tray to discharge. This could potentially cause personal injury, property damage, a crash. In addition, if the battery posts or cables make contact with surrounding metal components, this could cause an electrical short, increasing the risk of a potential fire.



Above. Beyond. Always.

Thor Super C Battery Tray Repair Instructions

OBJECTIVE: Weld on additional support to the battery tray.

Supplemental Information: The battery tray is located directly under the entry step on the passenger side of the unit. This tray can be accessed by unlatching the top step. It is also accessible underneath the unit behind the sidewall.



Materials Required:

- Weld resistant blankets
- Welder
- Black spray paint
- Two steel 1" x 1" formed angles six inches long 14 gage or thicker
 - If you do not have access to this material, please contact MORryde warranty at MorrydeWarranty@morryde.com to have this supplied for you.
 - MORryde part number (A-01-6-FWA-P)

NOTE: Up to \$15 will be covered during claim process for shop supplies used to complete recall repair.

Repair Instructions:

1. Open the hood and disconnect the positive and then the negative battery cables on both batteries. Once batteries have been disconnected, unclip all three harnesses on the electronic control module.

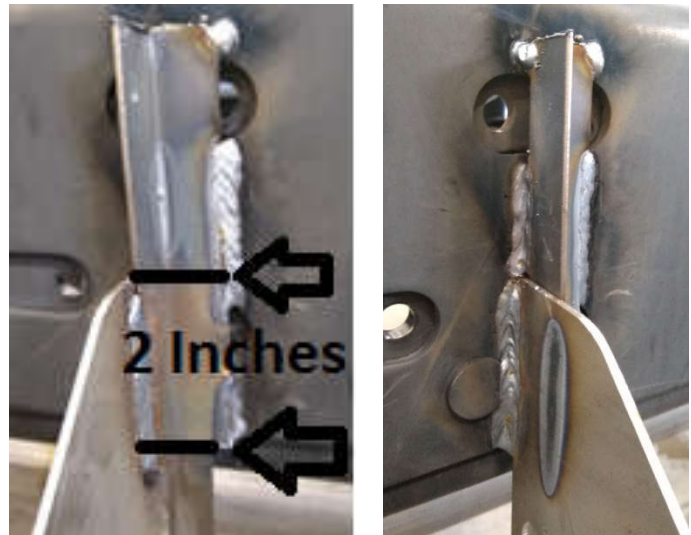


2. Locate the battery tray and disconnect both house batteries then wrap batteries, battery cables and fuse boxes with weld resistant blankets.
3. Weld one of the 1" X 1" angles to the inside or outside of each battery tray leg. The angle should be placed flush up against the side of the battery tray and flat up against the chassis. At least two inches of the angle should make contact to the battery tray to provide the required support. Weld all vertical seams available where the angle touches the battery tray or chassis rail. Do not weld on the chassis frame bend radius.

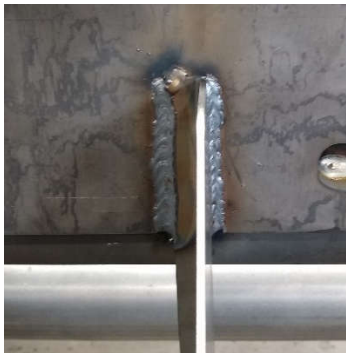
Before Repair



After Weld



Before Repair



After Weld



4. After work area has been able to cool, scrap off all burned off paint. Spray paint the newly installed angle, all welds and any areas where the original paint has burned off.
5. Remove all weld blankets, reconnect the electronic control module and both batteries.