



MMDi Corporation

200 Beltway Blvd.
Matthews NC 28104

Tow King Top Wind Jack Repair Instructions

Please read these instructions carefully. If you have any questions, please call Michael Edwards or Ed Huffstetler with MMDi at 704-882-4550.

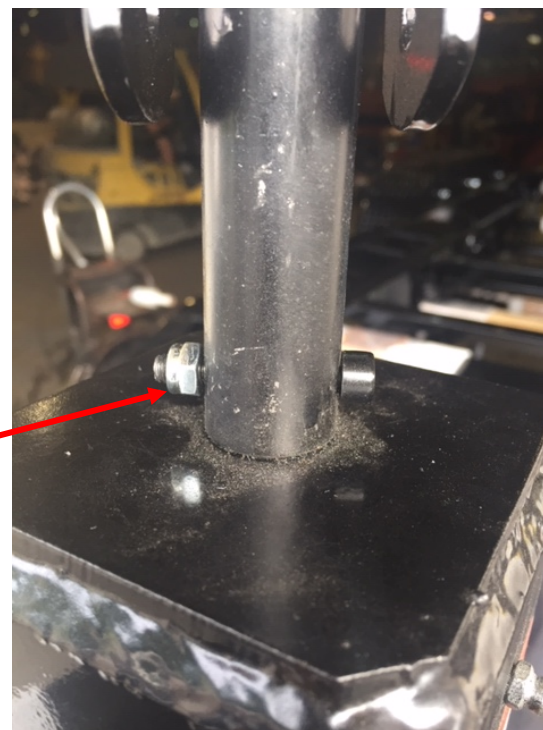
Jack Nut Repair on Tow King Jacks

Issue - As seen in IMG 3810 (bottom left), the base of the handle was shipped with a regular nut instead of a locking nut. A locking nut would ensure the nut does not come off the handle sleeve bolt.

In IMG 3806 (bottom right), the regular nut is replaced with a nylon locking nut, which will not allow the nut to work its way off the handle sleeve bolt.



REGULAR NUT



NYLON LOCK NUT

IMG 3810

IMG 3806

Parts Required (provided by MMDi):

- 6mm x 35mm bolt
 - Fastenal Bolt Part Number 11103347 <https://www.fastenal.com/products/details/11103347>
- 6mm nylock nut
 - Fastenal Nut Part Number 1140155 <https://www.fastenal.com/product?query=1140155&fsi=1>

Remove the existing nut and bolt and replace with the new, provided bolt and nut. The nut should be tightened so that it is close to the shaft with a gap of 1 to 2mm as shown below. No torque requirement is specified as the nuts are self locking. The finished installation is shown below.

