



INSTRUCTIONS TO PERFORM RECALL CAMPAIGN 158

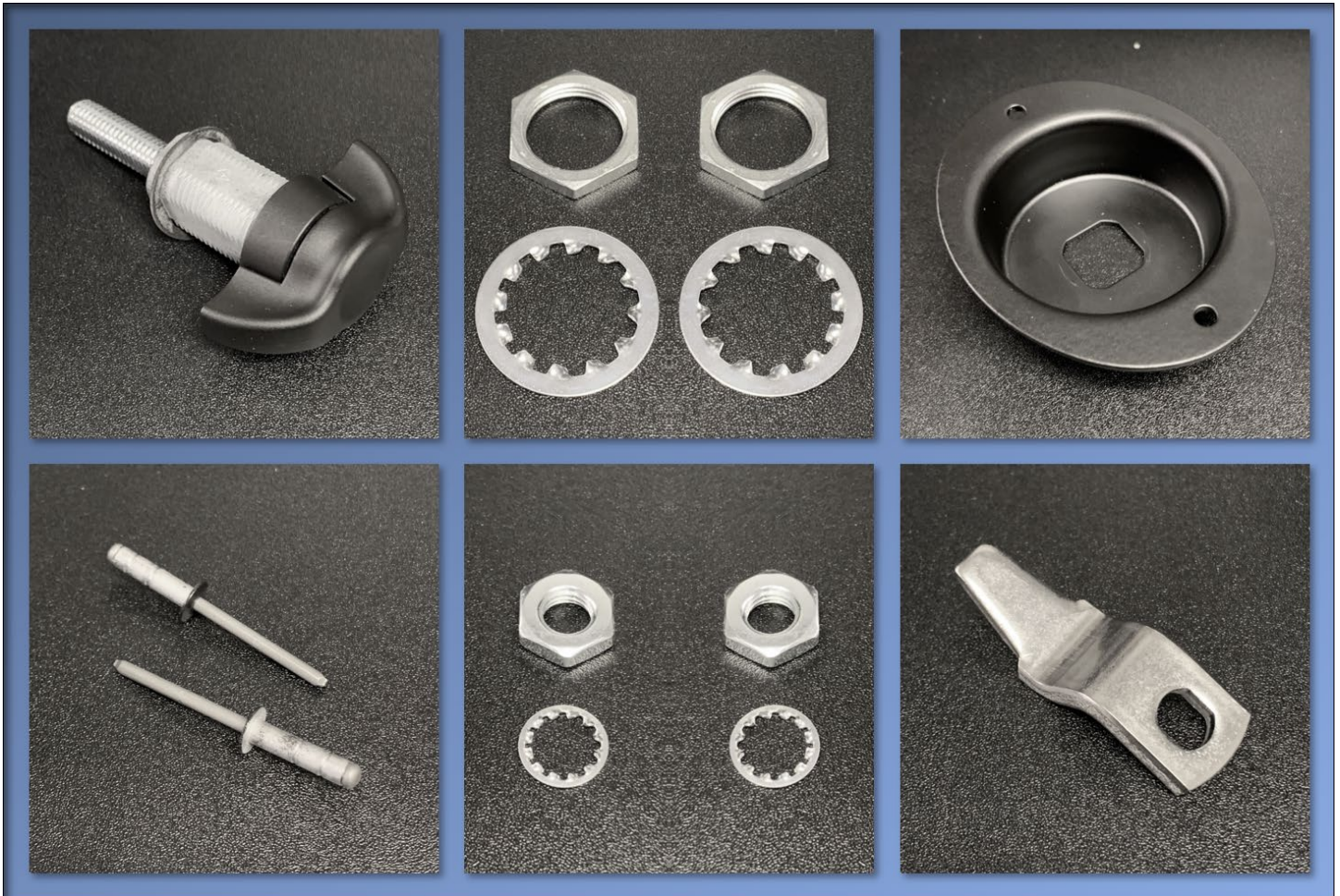
Models Affected:

Certain 2017, 2018, and 2019 model year Forza Motorhomes. These motorhomes were manufactured January 27, 2017 through June 11, 2019.

Tools Required:

- ...Drill
- ...Hole Saw - 2 1/2" (64mm)
- ...Hole Saw - 7/8" (22mm)
- ...Drill Bit - 3/16" (5mm)
- ...Rivet Gun for 3/16" pop rivet
- ...Wrench (2) - 11/16" (17mm)
- ...Wrench or deep socket - 1 1/16" (27mm)
- ...Chalk – non-permanent
- ...General Purpose Cleaner
- ...Wrench

NOTE: Only use the ITEMS supplied in Recall Kit #RC7643-20-758.



Identify location for secondary latch

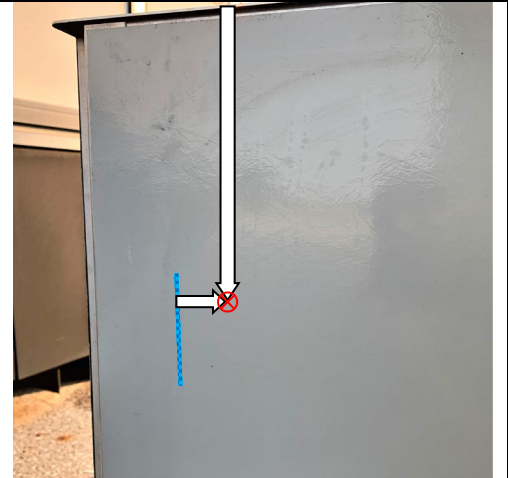
Using the chalk, rub a small amount on the door seal in the approximate vertical area of the secondary latch location. Close the door and reopen.



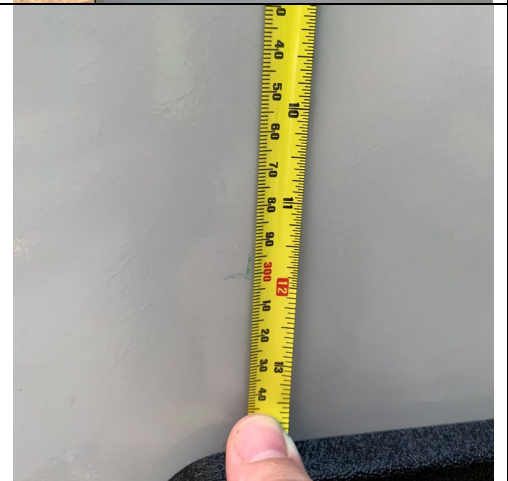
There should be a chalk reference on the door's interior skin.



From the center of the chalk reference (blue line shown for clarity), measure inward - towards the hinge 2" (50mm) and place a small mark. From the top of the door, measure down 12" (300mm) and place a small mark.



The intersection of these two locations will identify the location of the secondary latch. Using the 3/16" drill bit, drill a hole through the door making sure to keep perpendicular as you drill through. This will be the pilot hole used for positioning the hole saws.



Install the secondary latch

From inside the door, use the 2 1/2" hole saw to cut through the inner skin and foam. Take care to not cut past the foam.



From the door exterior, use the 7/8" hole saw to cut through the exterior skin.

Familiarize yourself with the function of latch. This is a clamping latch where the knob will be in the vertical position when in the latched position.

Insert the knob through the exterior. The knob should be in the latched position to ensure proper vertical alignment. There are two reference marks on the knob. When in the latched position, these two marks will align. For consistency, please face these two reference marks to the latch side of the door.



From the interior side, place one large washer and one large nut on the latch mechanism and tighten to the exterior skin. This can be done using the 1 1/16" deep well socket.



Place the cup over the latch mechanism with the two rivet holes lining up in the vertical position. Predrill the fiberglass through the rivet holes in the cup. Be careful not to drill too deep and contact the exterior skin. A hole just through the fiberglass is sufficient.



Rivet the cup in place.



From the interior side, place one large washer and one large nut on the latch mechanism and tighten to the cup.



Place one small nut and one small washer on the clamping shaft, only finger tight until the latch is adjusted.




Position the catch so it is pointing to the latch side of the door.



Place one small washer and one small nut on the clamping shaft, only finger tight until the latch is adjusted.

Function and Adjustment

<p>Turn the secondary latch so it is in the open position. Close the door, engaging the primary latch.</p>	
<p>Engage the secondary latch and verify it functions without interference when moving into the clamping position, before drawing the door tight.</p>	
<p>If the catch experiences interference while moving to the clamping position, or there is excessive pressure on the door and seal, open the door and adjust the catch position. Continue verification and adjustment until the secondary latch functions without interference or excess pressure on door or seal.</p>	
<p>Verify the secondary catch retains the door by disengaging the main latch with the secondary latch in the locked position. Proper function of the secondary latch will not allow the door to open when the primary latch is released.</p>	
<p>Clean up any residual chalk and debris.</p>	

If you have any questions regarding this recall remedy, please contact:

**Technical Assistance
1-866-653-4329**