

**June 28, 2019**

Version 1

## Safety Recall: Driver's Airbag Inflator Can Be Over-Pressurized

### AFFECTED VEHICLES

Year	Model	Trim	VIN Range
2001-07	Accord	ALL	Check the iN VIN status for eligibility.
2001-05	Civic	ALL	Check the iN VIN status for eligibility.
2001-05	Civic GX	ALL	Check the iN VIN status for eligibility.
2003-05	Civic Hybrid	ALL	Check the iN VIN status for eligibility.
2002-06	CR-V	ALL	Check the iN VIN status for eligibility.
2003-11	Element	ALL	Check the iN VIN status for eligibility.
2002-04	Odyssey	ALL	Check the iN VIN status for eligibility.
2003-08	Pilot	ALL	Check the iN VIN status for eligibility.
2006	Ridgeline	ALL	Check the iN VIN status for eligibility.

### BACKGROUND

NHTSA and its independent expert reviewed the findings of three independent investigations into the Takata airbag inflator ruptures. According to NHTSA, the combination of time, high temperature fluctuations, and humidity contribute to the degradation of the propellant in the inflators. NHTSA has concluded that this degradation can cause the propellant to burn too quickly, creating more pressure than the inflator can withstand, and, in extreme cases, causing the inflator to rupture and send shrapnel through the air bag toward vehicle occupants. NHTSA is prioritizing the recall of air bag inflators based on the risk of injury or death to vehicle occupants.

This is the final phase to this campaign and involves vehicles that previously had the driver's frontal airbag non-desiccated inflator replaced with a similar non-desiccated inflator (like for like), or an airbag module replaced with one that contained a non-desiccated inflator. This replacement may have been done as part of a recall or other repair.

For more information about these inflator recalls, go to [www.safercar.gov](http://www.safercar.gov) and use keyword **TAKATA**.

There are several bulletins with similar years and models. Make sure to do an iN VIN status inquiry and follow the indicated service bulletin.

Do an iN VIN status inquiry and, if indicated, repair the vehicle even though the vehicle may have been repaired under a previous campaign.

#### NOTE

**If the VIN status inquiry indicates that the vehicle is subject to any open safety recalls, including the front passenger's airbag inflator, make sure to also complete those recall repairs before returning the vehicle to the**

**CUSTOMER INFORMATION:**The information in this bulletin is intended for use only by skilled technicians who have the proper tools, equipment, and training to correctly and safely maintain your vehicle. These procedures should not be attempted by "do-it-yourselfers," and you should not assume this bulletin applies to your vehicle, or that your vehicle has the condition described. To determine whether this information applies, contact an authorized Honda automobile dealer.

**customer. If you are unable to complete any open recall, advise the customer of the recall status and when the recall could be completed.**

You may receive a different part number than ordered, and the inflator may appear different. As a result, there may be different installation instructions. Make sure you review this service bulletin for installation instructions and details about model applicability.

**CUSTOMER NOTIFICATION**

Owners of affected vehicles will be sent a notification of this campaign.

Do an iN VIN status inquiry to make sure the vehicle is shown as eligible.

Some vehicles affected by this campaign may be in your used vehicle inventory.

Failure to repair a vehicle subject to a recall or campaign may subject your dealership to claims or lawsuits from the customer or anyone else harmed as a result of such failure. To see if a vehicle in inventory is affected by this safety recall, do a VIN status inquiry before selling it.

**CORRECTIVE ACTION**

Replace the driver's airbag inflator, then return the original, undeployed inflator as directed.

**PARTS INFORMATION**

Part Name	Order Part Number	You may receive any of the following	Quantity
2001-02 Accord Driver's Airbag Inflator Kit	04770-S5A-405	04770-S5A-405	1
2003-07 Accord Driver's Airbag Inflator Kit	04770-SDA-406	04770-SDA-406	1
2001-05 Civic (includes GX and Hybrid) Driver's Airbag Inflator Kit	04770-S5A-408	04770-S5A-408	1
2002-06 CR-V Driver's Airbag Inflator Kit	04770-S9A-405	04770-S9A-405 04770-S9A-409	1
2003-11 Element Driver's Airbag Inflator Kit	04770-SCV-405	04770-SCV-405 04770-SCV-409	1
2002-04 Odyssey Driver's Airbag Inflator Kit	04770-S5A-405	04770-S5A-405	1
2003-08 Pilot Driver's Airbag Inflator Kit	04770-S9A-405	04770-S9A-405 04770-S9A-409	1
2006 Ridgeline	04770-SJC-406	04770-SJC-406	1

**NOTES**

- The inflators appear similar, but may have different rates of inflation. **Make sure you install the correct inflator (confirm the part number) for the vehicle you are working on.**
- Always use new Torx bolts to install the airbags. The new Torx bolts are coated with threadlock to make sure they do not come loose.
- The inflator kit box must be used to return the old inflator to its supplier. Be careful not to damage the inflator kit box.
- If the defective, undeployed inflator is not returned, the warranty claim for that vehicle will be charged back to your dealership.

- To return the inflator, follow the instructions in PIB A15-0002, *Inflator Kit Return Process*.
- Parts staff can scan the part number and serial number from the outside of the box into the warranty claim by using the Controlled Part Serial No. screen and scanning the applicable information. Refer to the job aid *Ordering and Managing Replacement Inflators* for more information.

## WARRANTY CLAIM INFORMATION

### NOTES

- To avoid a warranty claim being charged back to your dealership, the defective, undeployed inflator must be returned to its supplier. Follow the shipping instructions in PIB A15-0002, *Inflator Kit Return Process*.
- The **replacement inflator part number and serial number** are printed on the label that should be attached to the RO.
- To avoid non-payment of warranty claims, the new airbag inflator part number and serial number must be included in each claim. For more information, refer to step 6 of REPAIR PROCEDURE.
- The serial number is encoded into the bar code printed on the label inside of the box and on a label attached to the outside of the box. If your dealership uses a scanner, you can scan the serial number from either place into the claim.
- The part number is encoded into a barcode attached to the outside of the box. If your dealership uses a scanner, you can scan the part number into the claim.
- **If you confuse the serial number and part number when entering the claim information**, your claim will automatically be rejected.
- For more information about scanning and filing airbag inflator recall claims, refer to **Ordering and Managing Replacement Airbag Inflators**. From the iN, select **Service, Warranty, Warranty Claim**, then **Claims Reference Guide**. Under **HOT TIPS/TOPICS**, select **Inflator Claims at a Glance**.

Year/Model	Operation Number	Replacement Part Number	Flat Rate Time	Defect Code	Symptom Code	Template ID	Failed Part Number
2001-02 Accord	7521P4	04770-S5A-405	0.5 hr	6ZT00	Y5800	A19080A	06770-SDA-A80ZA
2003-07 Accord	7521P4	04770-SDA-406	0.5 hr	6ZT00	Y5800	A19080B	06770-SDA-A80ZA
2001-05 Civic (includes GX and Hybrid)	7521P4	04770-S5A-408	0.5 hr	6ZT00	Y5800	A19080C	06770-S5A-A10ZA
2002-06 CR-V	7521P4	04770-S9A-405	0.6 hr	6ZT00	Y5800	A19080D	06770-S9A-A80ZA
	7521P4	04770-S9A-409	0.6 hr	6ZT00	Y5800	A19080E	06770-S9A-A80ZA
2003-11 Element	7521P4	04770-SCV-405	0.5 hr	6ZT00	Y5800	A19080F	06770-SCV-A80ZA
	7521P4	04770-SCV-409	0.5 hr	6ZT00	Y5800	A19080G	06770-SCV-A80ZA
2002-04 Odyssey	7521P4	04770-S5A-405	0.5 hr	6ZT00	Y5800	A19080H	06770-S0X-A10ZA
2003-08 Pilot	7521P4	04770-S9A-405	0.5 hr	6ZT00	Y5800	A19080I	06770-S9V-A01ZA
	7521P4	04770-S9A-409	0.5 hr	6ZT00	Y5800	A19080J	06770-S9V-A01ZA

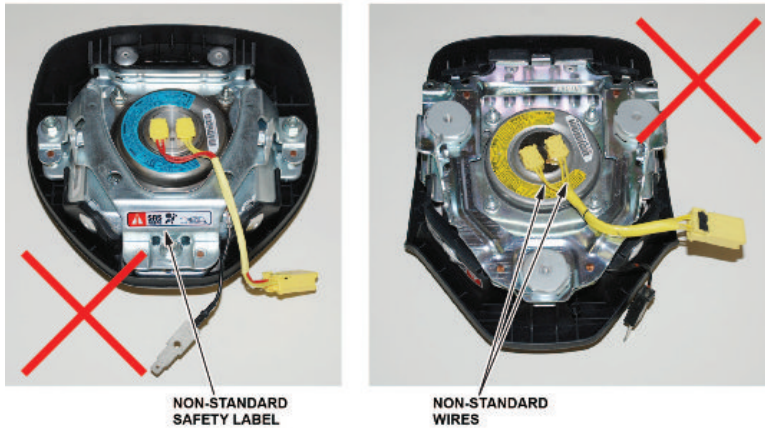
<b>Year/Model</b>	<b>Operation Number</b>	<b>Replacement Part Number</b>	<b>Flat Rate Time</b>	<b>Defect Code</b>	<b>Symptom Code</b>	<b>Template ID</b>	<b>Failed Part Number</b>
2006 Ridgeline	7521P4	04770-SJC-406	0.5 hr	6ZT00	Y5800	A19080K	06770-SJC-A10ZA

Skill Level: Repair Technician

## IDENTIFYING COUNTERFEIT AIRBAGS

This section goes over the steps to identify counterfeit airbags and applies to all vehicles in this service bulletin. It is referred to in each vehicle's repair procedure. Click [HERE](#) to watch a video to help identify counterfeit airbags.

- If there is nothing unusual about the airbag or the inflator, continue with the inflator replacement procedure.
- If there are any unusual markings, like an incorrect label or a model year written in marker, the airbag and inflator may not be the correct airbag and/or inflator for the vehicle or it may be a counterfeit part. For more information about counterfeit airbags, you can refer to [safercar.gov](http://safercar.gov), enter keywords **MANAGING COUNTERFEIT**, and select **Recommended Dealer Guidance for Managing Counterfeit Air Bags** from the list. **If you suspect that the airbag or inflator is counterfeit, do not continue this procedure.** Contact your DPSM for assistance.



## REPAIR PROCEDURE

### NOTES

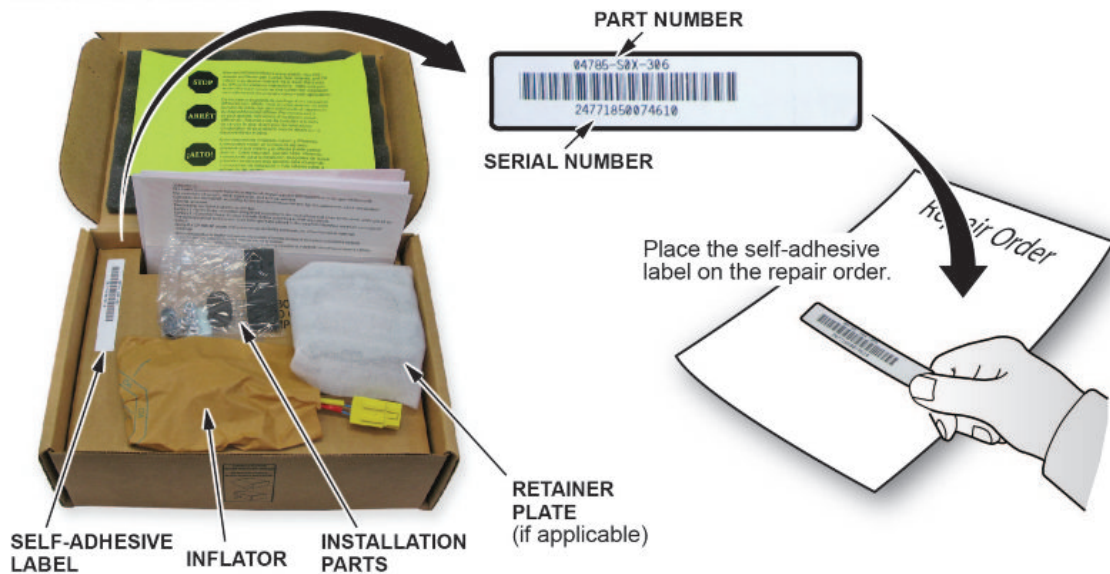
- **If the VIN status inquiry indicates that the vehicle is subject to any open safety recalls, including the front passenger's airbag inflator, make sure to also complete those recall repairs before returning the vehicle to the customer. If you are unable to complete any open recall, advise the customer of the recall status and when the recall could be completed.**
  - Make sure you have the anti-theft code for the audio and navigation system (if applicable), then write down the audio unit presets.
  - Be careful not to damage any parts when replacing the inflator, and follow the procedure exactly.
  - If, before removing the airbag, you suspect that it may be the incorrect airbag for the vehicle or a counterfeit, do not remove the airbag. Contact your DPSM for assistance.
  - Make sure you have reviewed the SRS Precautions and Procedures in the service information before doing the REPAIR PROCEDURE.
1. Turn the ignition to ON, and check if the SRS indicator comes on for about **6 seconds**, then turns off.
    - If the indicator comes on, then goes off after about **6 seconds**, turn the ignition to OFF, and go to step 2.
    - If the indicator does not come on, or if it stays on, contact your DPSM for assistance.
  2. Disconnect the battery negative cable, and wait at least **3 minutes** before continuing.
  3. Remove the driver's airbag. Refer to the service information.
  4. Place the airbag module, face-down, on a clean shop towel.
  5. Visually inspect the airbag and the inflator for any unusual writing or markings. Refer to IDENTIFYING COUNTERFEIT AIRBAGS.

6. Peel the label in the inflator box from its backing, and attach it to the RO. For the warranty claim to be paid, the **replacement inflator part number that you received** must be included in the warranty claim.

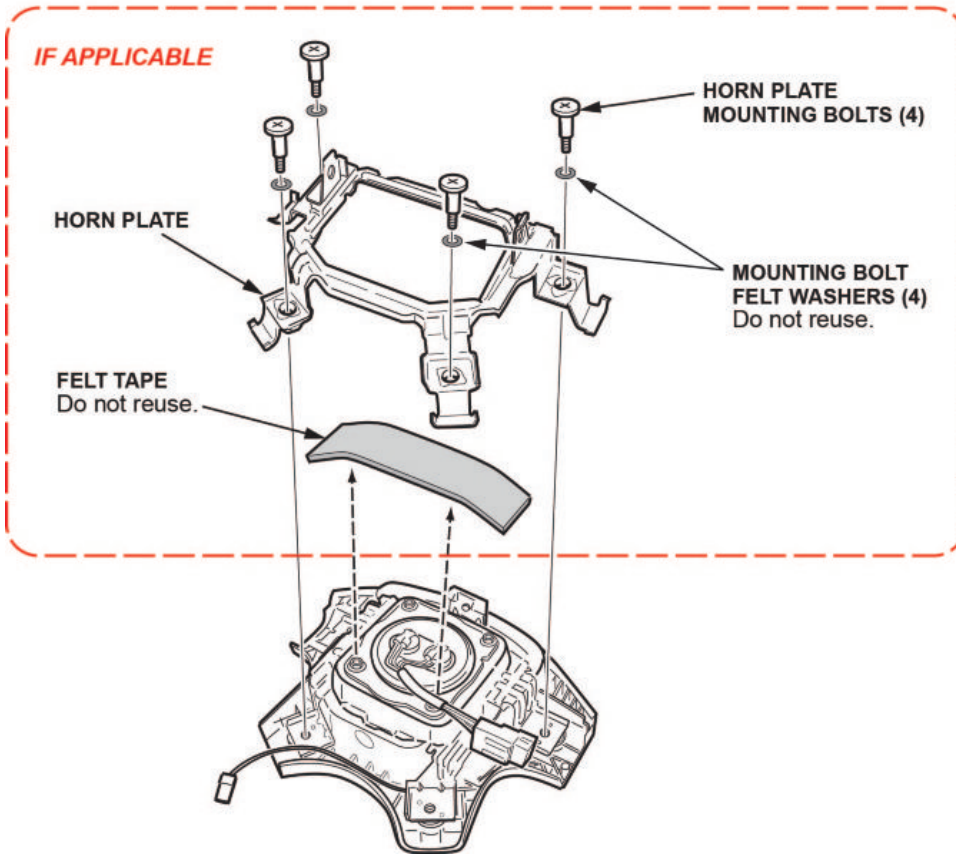
**NOTES**

- The replacement part number is printed on the top part of the label, and the serial number is printed on the bottom. **Make sure you attach the label to the RO and give it to the warranty clerk.**
- There may also be a colored sticker in the kit; ignore it because it is not used.
- Not all inflator kits have a label included. In those cases, write the serial number and part number from the side of the inflator box on the RO. The part number always starts with 047.

**INFLATOR PARTS BOX**



7. If there is no horn plate installed, go to step 8. If there is a horn plate installed, remove the four horn plate mounting bolts, the mounting bolt felt washers, the horn plate, and remove the felt tape covering the lower two inflator locknuts. The felt washers and felt tape will not be reused.

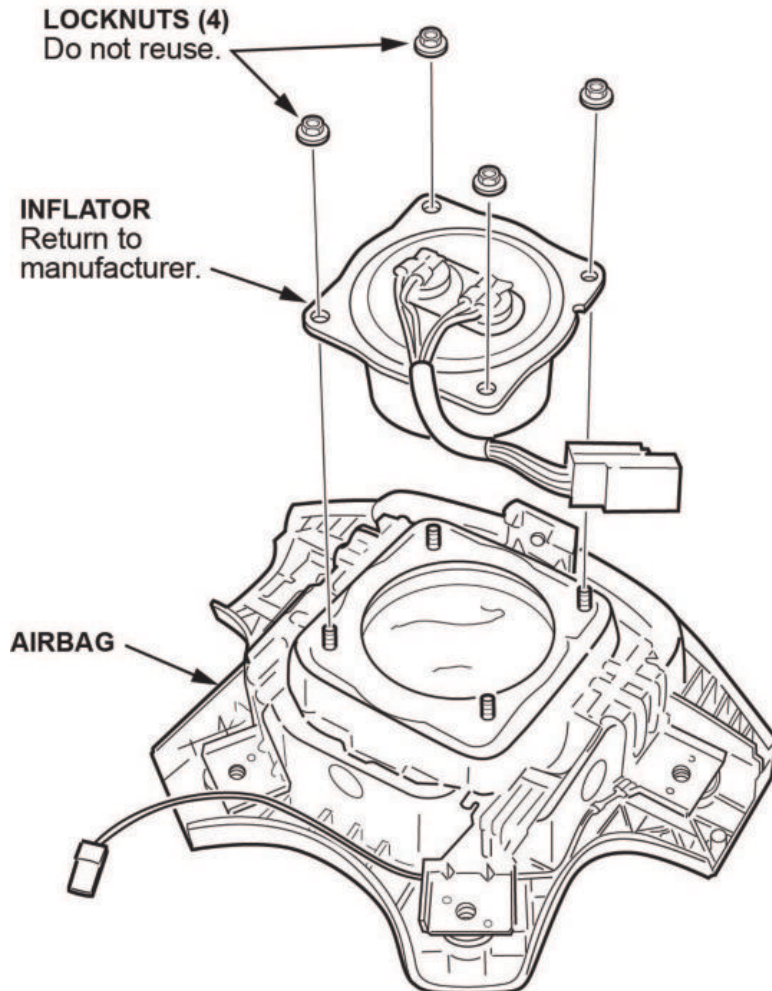




- Using needle-nose vise grips or a 3/8 in. 6-point socket, remove the four locknuts from the inflator. The locknuts will not be reused.

**NOTE**

Do not remove the inflator from the airbag until you complete step 9.



- Use shop air to clean any debris that may be on the inflator, then remove the inflator from the airbag.

**NOTE**

- Do not allow any debris to enter the inflator opening in the airbag.
- Do not deploy the inflator. The inflator must be returned to its supplier in the box the new inflator came in. To return the undeployed inflators, follow the shipping instructions outlined in PIB A15-0002, *Inflator Kit Return Process*.

10. Turn over the airbag (inflator side down), and shake it to remove any debris from the inflator opening.



11. Install the new inflator in the airbag module.

**NOTE**

- There may be some minor surface rust or corrosion on the new inflator; this is OK.
- Click [HERE](#) for a short video about the different variations of the driver's and front passenger's replacement inflators involved with recalls related to Takata inflators. While both the driver's and front passenger's inflators are shown in the video, this is informational only. Replace inflators only as directed by the iN VIN status inquiry.

There are four different styles of inflators. Make sure you use the correct installation procedures for the type of inflator you have.

Type 1	Type 2 - See 11.1	Type 3 - See 11.2	Type 4 - See 11.3
N/A	04770-S5A-405	04770-S5A-408	04770-S9A-409
	04770-SDA-406		04770-SCV-409
	04770-S9A-405		
	04770-SCV-405		
	04770-SJC-406		

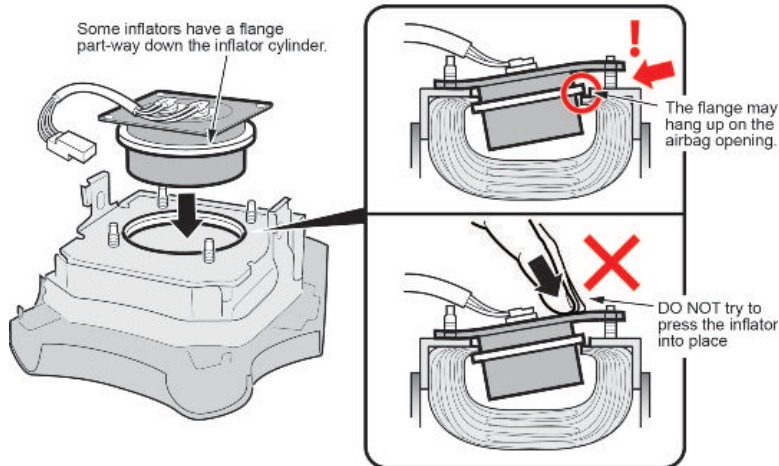
11.1. **Type 2 - Check your part number against the ones listed for each installation procedure. Use the correct installation procedure for the part you received.**

**NOTE**

Refer to Driver's Inflator Type 2 in the video.

04770-S5A-405	04770-SDA-406	04770-S9A-405	04770-SCV-405
04770-SJC-406			

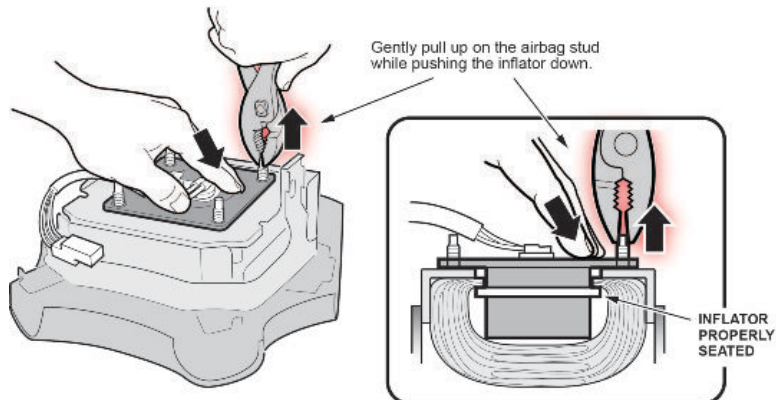
11.1.1. Place the inflator into the opening with the inflator harness toward the bottom of the airbag module. Do not force it into the airbag module.



11.1.2. Using a pair of pliers, gently pull up on each stud while pushing the inflator down until the inflator is properly seated within the airbag module, then go to step 12.

**NOTE**

Be careful not to damage the threads.

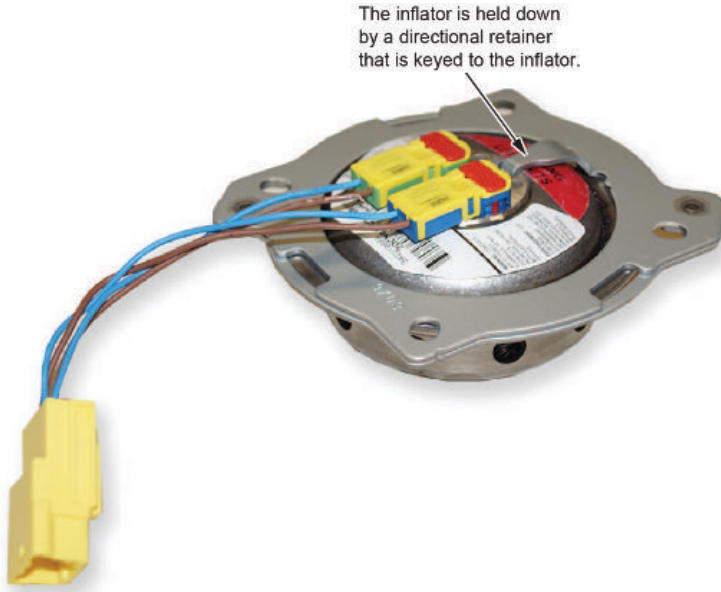


11.2. **Type 3 - Check your part number against the ones listed for each installation procedure. Use the correct installation procedure for the part you received.**

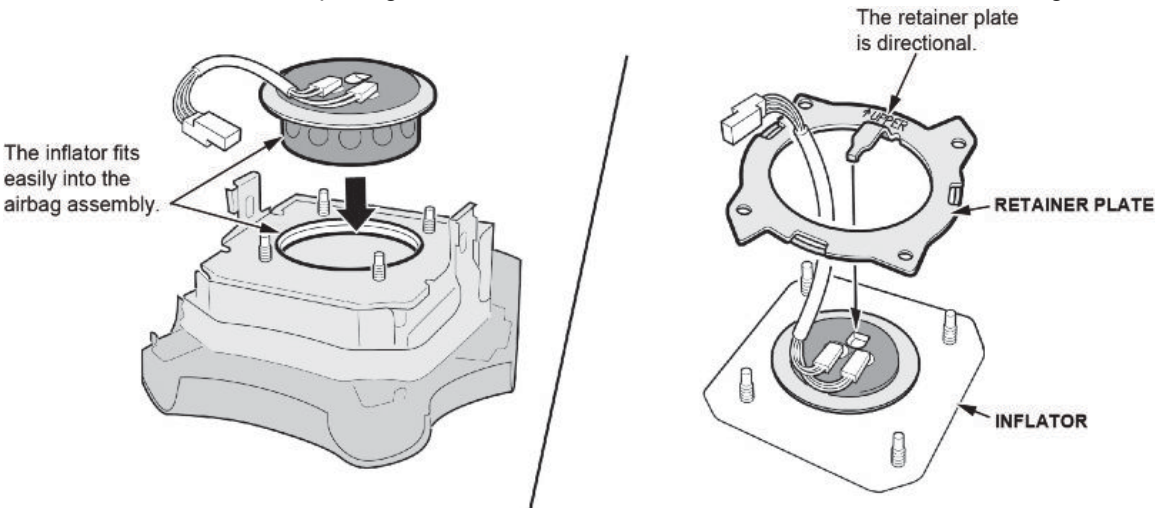
**NOTE**

Refer to Driver's Inflator Type 3 in the video.

04770-S5A-408			
---------------	--	--	--



11.2.1. Place the inflator into the opening with the inflator harness toward the bottom of the airbag module.



11.2.2. Install the bracket onto the studs. Make sure the locator tab fits into the locator hole as shown, then go to step 12.

**NOTE**

Make sure the harness comes out through the center opening. Do not install the bracket over the harness wires.

11.3. **Type 4 - Check your part number against the ones listed for each installation procedure. Use the correct installation procedure for the part you received.**

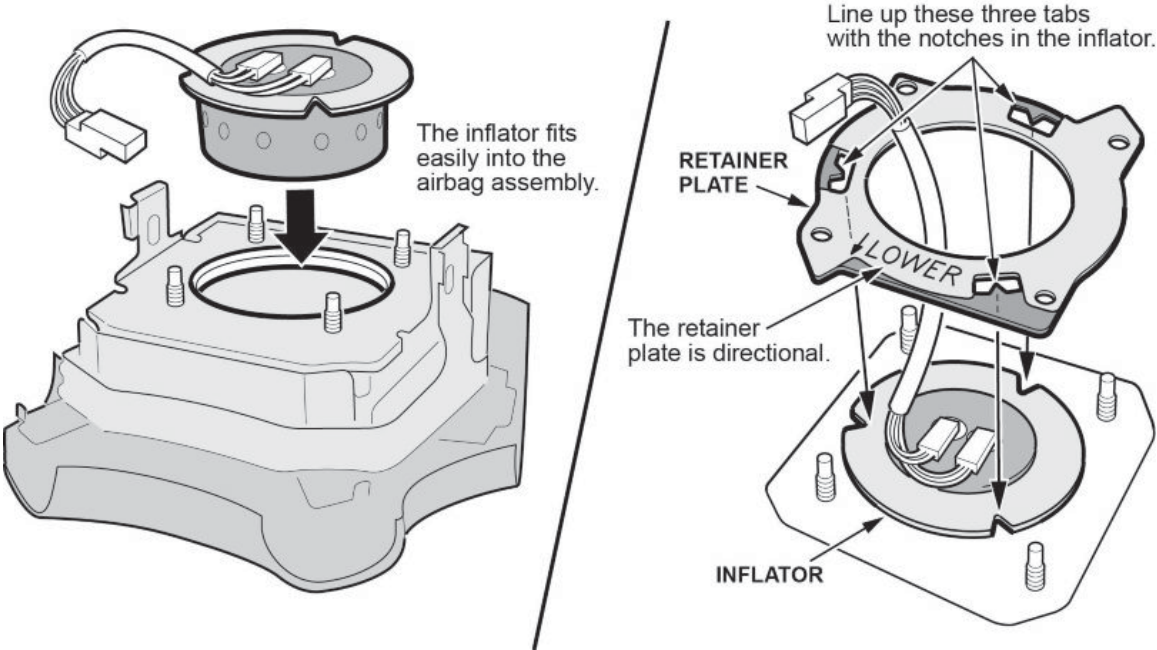
**NOTE**

Refer to Driver's Inflator Type 4 in the video.

04770-S9A-409	04770-SCV-409		
---------------	---------------	--	--



11.3.1. Place the inflator into the opening with the inflator harness toward the bottom of the airbag module.



11.3.2. Install the bracket onto the studs with the stamp **LOWER** at the bottom of the airbag.

11.3.3. Make sure the three tabs and notches are properly aligned, then go to step 12.

#### NOTES

- The tabs and notches are designed to align in one direction only. If the tabs and notches are not aligned, the inflator and bracket are not installed correctly.
- Make sure the harness comes out through the center opening. Do not install the bracket over the harness wires.

12. Install and torque the new locknuts to **3.9 N·m (2.8 lb-ft, 34 lb-in)**.

13. If applicable, install the horn plate.

13.1. Cover the lower two inflator locknuts with new felt tape (if applicable).

13.2. Install the horn plate with new felt washers on its mounting bolts. Torque the mounting bolts to **3.4 N·m (2.5 lb-ft, 30 lb-in)**, then make sure the horn plate moves freely.

14. Install the driver's airbag using new Torx bolts, and torque the bolts to **9.8 N·m (7.2 lb-ft)**. Refer to the service information.

15. Connect the battery negative cable, and do the following:

- Enter the anti-theft codes for the audio unit.
- Press and hold the audio unit power button to exit the anti-theft mode.
- Enter the audio unit presets.
- Set the clock (on vehicles without navigation).

16. Turn the ignition to ON, and make sure the SRS indicator comes on for about **6 seconds**, then turns off.

17. Give your warranty clerk the RO that includes the replacement inflator serial number and replacement part number. For the warranty claim to be paid, the replacement inflator part number must be included in the warranty claim.

END