

REPAIR PROCEDURE: PCM REPROGRAMMING by MMDS (IDS)**NOTE:**

- **Follow the below "Service Caution for reprogramming".**

1. **Reprogram the PCM with the Mazda Modular Diagnostic System (M-MDS) using IDS 113.06 software, or using IDS 114.02A or later software.**

NOTE:

- Verify the current PCM file name in the vehicle by log view screen. If it is the same as that in the below chart or later one, you do not need to reprogram it.
- Always update the IDS tool first, then follow on-screen instructions to download the needed calibration file for PCM reprogramming.
- Follow the attached "Service Caution for reprogramming".

1. Verify the repair by starting the engine and making sure there is no MIL illumination or abnormal warning lights present.

NOTE:

- If any DTCs should remain after performing DTC erase, diagnose the DTCs according to the appropriate Troubleshooting section of the Workshop Manual.
2. After the reprogramming, verify the calibration file name with the chart below at Log Viewer screen of the (PCM) FILENAME.

Calibration files information**NOTE:**

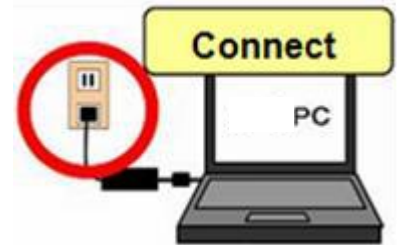
- If the calibration file is with the suffix in the table or later, the PCM already has the modified calibration.
- Older file name column shows the first four letters of the older file name only if some of the older file names are different from the new file name.

Vehicle Name	PCM File Name	Note
Mazda6	PYH3-188K2-L	AT, 2WD, Melco
	PXD8-188K2-C	AT, 2WD, Melco
CX-5	PYFA-188K2-J	AT, 2WD, Melco
	PYFB-188K2-J	AT, 2WD, Denso
	PYFC-188K2-J	AT, 4WD, Melco
	PYFD-188K2-J	AT, 4WD, Denso
	PX42-188K2-C	AT, 2WD, Melco
	PX44-188K2-D	AT, 4WD, Melco
	PX43-188K2-C	AT, 2WD, Denso
	PX45-188K2-D	AT, 4WD, Denso

Service Caution for Reprogramming

NOTE: Poor connection between the vehicle and M-MDS and/or low voltage may result in abnormal termination and/or data corruption.

- a. Make sure that the following connections are firmly connected, and then do NOT touch the VCM and DLC cable to prevent from causing noise and poor connection.
- Between the vehicle-side connector and the DLC cable
 - Between the PC-side connector and USB port of PC



- b. Connect AC adapter to the PC in order to stabilize voltage fluctuation during reprogramming
Do NOT use vehicle battery outlet as power source for the PC.

- c. During reprogramming, connect battery charger (charge current maintained within 10 to 15A) to the vehicle to stabilize voltage fluctuation.



Before reprogramming, pay attention to the vehicle condition and PC environment.

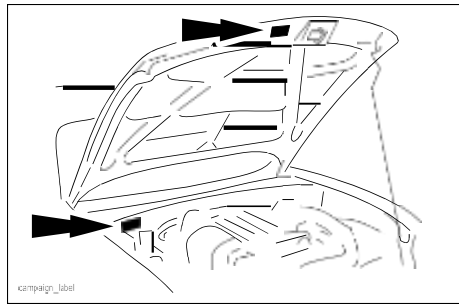
- a. Turn off all the electrical loads, especially pay attention to A/C (blower), audio, rear defogger and headlights.
- b. Perform self-test and verify no DTC is stored. If any DTC is stored, fix the concern and delete the DTC.
- c. Disconnect all non-genuine aftermarket accessories.
- d. Terminate all programs other than IDS on the PC. This may extend reprogramming, PC may freeze or it may cause other problems.
- e. Verify that the latest IDS software is installed on the PC.
- f. Perform reprogramming under proper Internet environment. Especially when using wireless network, make sure the connection is strong.
- g. Make sure to keep proper free space on the PC's hard disc. Insufficient free space (less than 1 GB) may result in PC freeze during reprogramming.

A. CAMPAIGN LABEL INSTALLATION

1. Fill out a blue "Campaign Label" (9999-95-065A-06) with Campaign No: "3719F", your dealer code, today's date.

CAMPAIGN LABEL	
CAMPAIGN NO:	_____
DEALER CODE:	_____
DATE:	/ /
P/N 9999-95-065A-	

2. Affix it to the hood or bulkhead as shown:



3. Return the vehicle to customer.