



Mercedes-Benz

Campaign No. 2019090018, November 2019

TO: ALL MERCEDES-BENZ CENTERS

SUBJECT: **Model GT-Class vehicles (190 platform)**
Model Year 2016 and 2017
Carbon-Fiber Driveshaft Bonding

Mercedes-Benz AG ("MBAG"), the manufacturer of Mercedes-Benz vehicles, has determined that on certain Model Year ("MY") 2016-2017 GT-Class vehicles (190 platform), the bonding between the carbon-fiber driveshaft and flange might not meet current production specification. This could affect the performance of the transmission and in limited cases, could lead to a loss of motive power, increasing the risk of a crash. An authorized Mercedes-Benz dealer will replace the carbon-fiber shaft, including the flange, on the affected vehicles.

Prior to performing this Recall Campaign:

- Please check VMI to determine if the vehicle is involved in the Campaign and if it has been previously repaired. Always Check VMI for any open campaigns, and perform accordingly.
- Please review the entire Recall Campaign bulletin and follow the repair procedure exactly as described.

Please note that Recall Campaigns **do not expire** and may also be performed on a vehicle with a vehicle status indicator.

Approximately 994 vehicles are involved.

Order No. P-RC-2019090018

This bulletin has been created and maintained in accordance with MBUSA-SLP S423QH001, Document and Data Control, and MBUSA-SLP S424HH001, Control of Quality Records.

Check/test procedure

1. Remove lower engine compartment lining (A, figure 1).

**Figure 1**

2. Open maintenance access on engine-side drive shaft housing.

Rotate engine at center bolt in direction of rotation until affixed label on drive shaft is visible.

i Rotate engine at center bolt in direction of rotation with a 27 mm open end wrench.

**Figure 2**

3. Check production number (**B, figure 3**) of drive shaft.

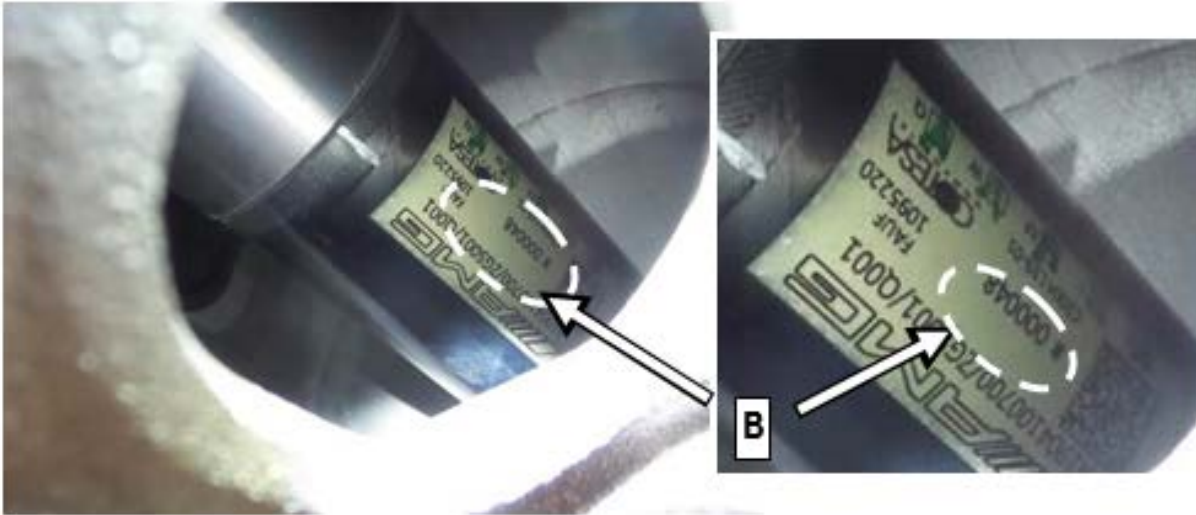


Figure 3

- a. Production number as of **000322** up to **002635** and as of **005502** up to **006655**: Perform **work procedure**
- b. Production number as of **002636** up to **005501** and as of **006656**: **End measure**

i The **findings** from the check/test procedure must be recorded **in writing on the work order**.

Work procedure

1. Replace drive shaft.
i For basic data, see **AR41.10-P-0051MNB**.

Special tools

Quantity	Designation	Part no.
1	Assembly drift	W 190 589 00 15 00

Primary Parts Information

Qty.	Part Name	Part Number	Estimated Replacement Rate
1	Drive shaft	A 190 410 23 00	100%
1	O-ring	A 027 997 25 45	100%
2	Mounting plate lock washer	A 190 411 15 00	100%
1	Screw	N 000000 006551	100%
6	Hexalobular bolt (drive shaft to flange)	N 000000 000276	100%
16	Hexalobular bolt (propeller shaft to engine and transmission)	N 000000 006589	100%
2	Hexalobular bolt (propeller shaft to transmission, starter)	N 910105 010044	100%
2	Nut (propeller shaft to transmission, starter)	N 910112 010001	100%
1	Lubricant	A 000 989 03 67	100%
2	Clamp (exhaust system)	A 000 490 15 41	100%
1	Sealing ring (exhaust system)	A 221 492 00 81	100%
4	Transmission oil line sealing ring	A 020 997 27 45	100%
12	Screw (axle shaft to rear axle flange)	A 002 990 10 03	100%
2	Collar nut (rear axle shafts to hub)	A 000 353 13 73	100%
4	Nut (torsion bar linkage to wheel carrier)	N 000000 003275	100%
2	Bolt (upper transverse control arm to wheel carrier)	N 910105 014016	100%
2	Nut (transverse control arm to wheel carrier)	A 005 990 47 50	100%
2	Bolt (transmission mount to transmission carrier)	N 910105 008019	100%
8	Bolt (transmission carrier to transmission)	N 910143 008004	100%
As required*	Long-life grease	A 000 989 63 51 11	100%

*One container for at least 10 vehicles

Warranty Information**With Check**

Operation: Check drive shaft (02-1194)

Damage Code	Operation Number	Labor Time (hrs.)
41 900 19 8	02-1194	0.9

With Check and Repair

Operation: Check drive shaft (02-1194)
Replace drive shaft (02-1124)

Damage Code	Operation Number	Labor Time (hrs.)
41 900 19 7	02-1194	0.9
	02-1124*	9.3

*Includes: Fully remove/install engine compartment linings; remove/install drive shaft with housing; check/correct transmission oil level; unscrew/screw on ground line; remove/install 2 wheel and tire assemblies; extra work for: Remove/install 2 wheel and tire assemblies in case of assembly with wheel lift dolly; extra work for: Remove/install exhaust system

i **Note**

Operation Number labor times are subject to change.