



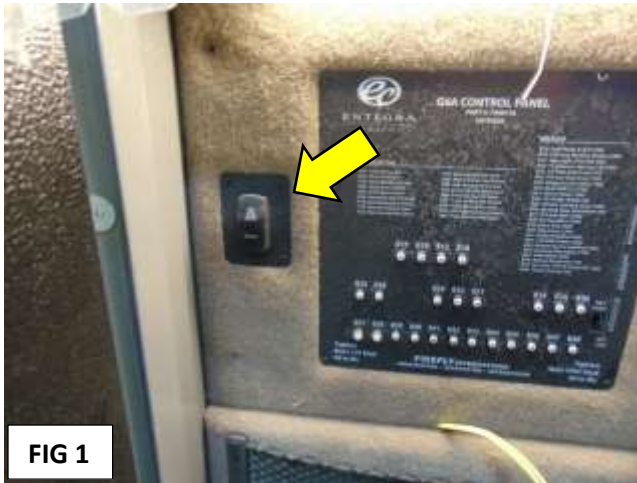
## STEERING BOX SLIP SHAFT BOLT TORQUE

<b>Bulletin Type:</b>	UPCOMING RECALL
<b>Bulletin #:</b>	YET TO BE ASSIGNED
<b>Job Code:</b>	9803435 <i>Please hold claims until Recall number is assigned.</i>
<b>Flat Rate:</b>	RC024 Inspect only NO repair required .1hr RC025 Inspect and repair .3 hr

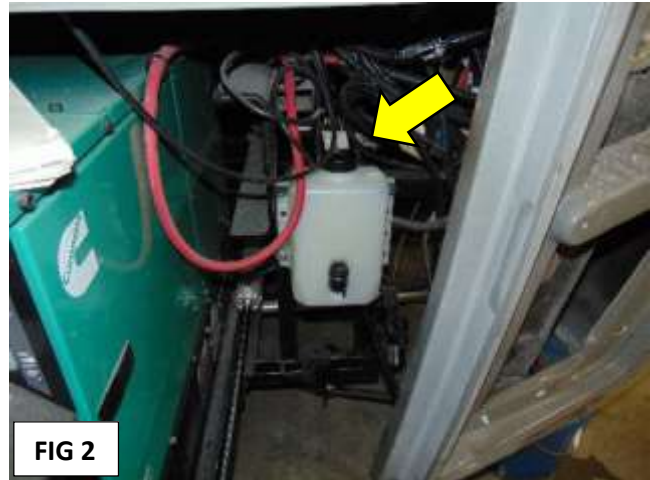
<b>Publication Date:</b>	Pre notification 6-6-2019
<b>Make:</b>	Entegra
<b>Model(s):</b>	Anthem Cornerstone
<b>Model Year:</b>	2020

<b>Incident:</b>	Steering Shaft bolt may not be torqued correctly at 55ft lbs. to prevent loss of steering.
<b>Affected Units:</b>	2020 Anthem L14B8051-8064 L14F8051-8070 L14W8051-8067 2020 Cornerstone L16A8051-8052 L16B8051-8065 L16F8051-8054 L16W8051-8059 L16X8051-8053 L16Y8051-8054
<b>Misc. Tools &amp; Supplies:</b>	Torque wrench (Ft/Lbs) 11/16 socket 5/8 wrench or socket

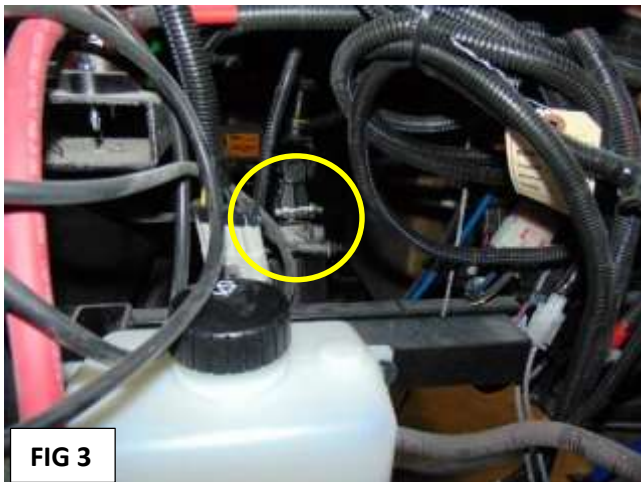
## REPAIR INSTRUCTIONS



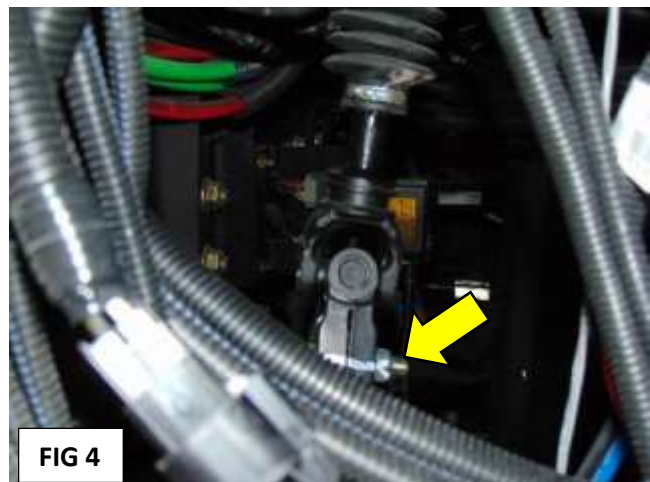
**FIG 1:** Open the generator compartment using the switch (arrow) inside the driver side front electrical compartment.



**FIG 2:** Bolt is located on the right side of the generator behind the washer fluid bottle (arrow).



**FIG 3:** Bolt location is circled in this photo.



**FIG 4:** Arrow is pointing to the Steering Slip Shaft bolt.

- Move wiring out of the way to see it.
- **IF WHITE LINE RUNNING FROM BOLT HEAD TO THE NUT – NO REPAIR IS REQUIRED – BOLT WAS TORQUED TO 55FT LBS PRIOR TO SHIPPING.**

**FIG 5: IF WHITE LINE IS NOT VISIBLE PROCEED TO NEXT STEP TO COMPLETE REMEDY.**

Bolt head size takes a 5/8" socket or wrench.

- Nut size takes an 11/16" socket
- Use a torque wrench and torque the nut to 55 ft./lbs.
- Mark the bolt with a white line as shown in photo to indicate the bolt has been torqued properly.

