


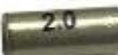
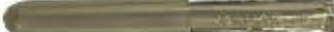

TOOLS AND PARTS INFORMATION

Tool Number	Description	Qty.	Notes
49JP-03-001	MRT Crimping Tool*	1	
Locally Sourced	Art knife	1	 Recommended for C51-52 and C54-55.

*NOTE: This is currently a required Mazda tool (Drawer 6, Section B2, for non-recall repairs) and must be used for this recall. Please do not use another crimping tool and obtain this tool from eStore if it is not available in your shop.

Part Number	Description	Qty.	Notes
TMY6-67-SH0	Parts kit	1	See below for detail.
B455-32-099B	Bolt	1	[R] Only when the lower joint bolt for the intermediate shaft is removed. Please see updated note on repair to connector C-54 and C-55 Ensure adequate parts supply to replace this bolt.
Locally Sourced	PVC tape	1	

Contents of the parts kit:

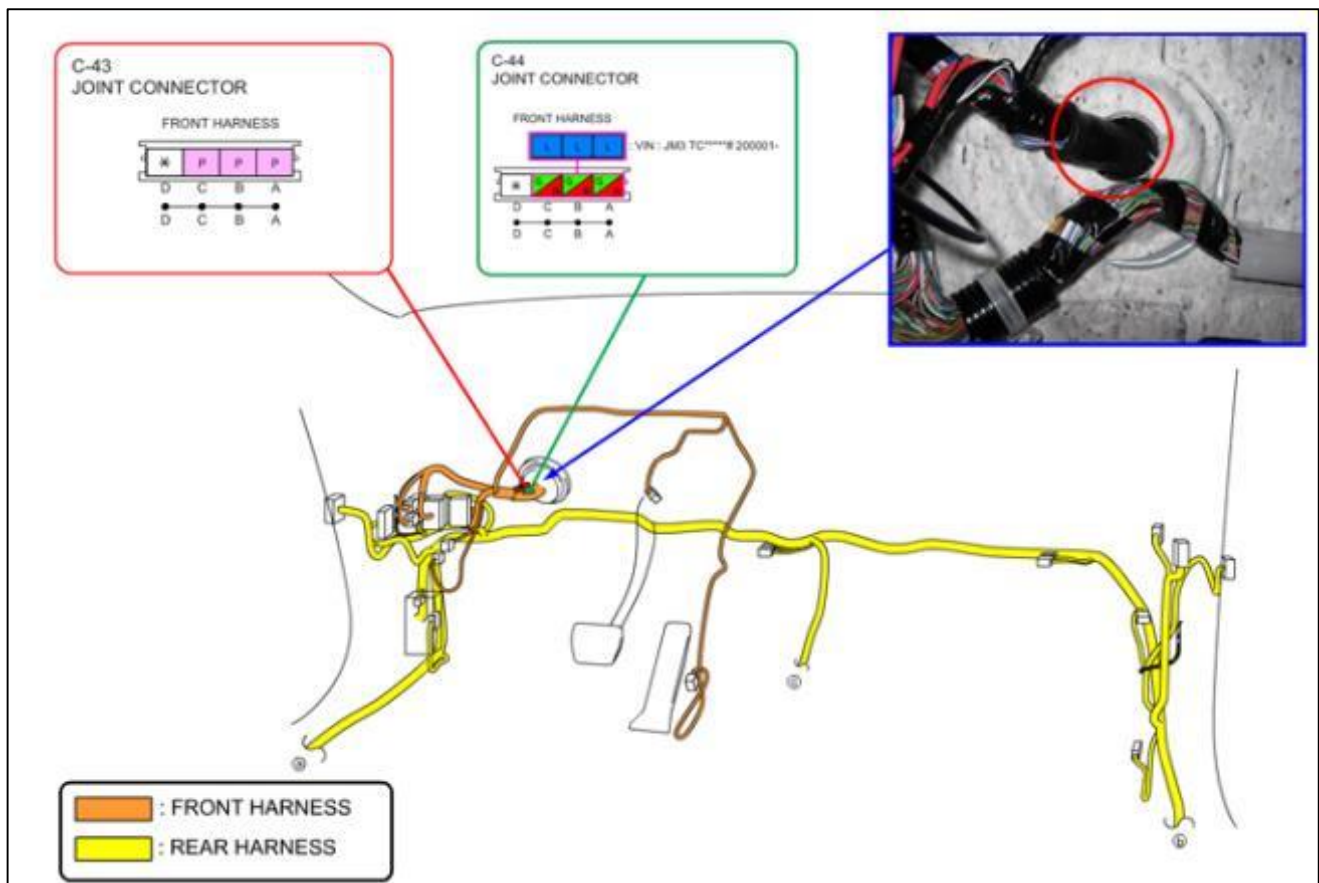
Description	Qty.	Notes
Tube Sleeve 1.25 (smaller)	8	
Tube Sleeve 2.0 (larger)	6	
Protective cap	8	
Zip Tie	4	
Harness protector	1	Use if harness protector is removed and its clips are damaged (KD45-67P51)

A. REPAIR PROCEDURE

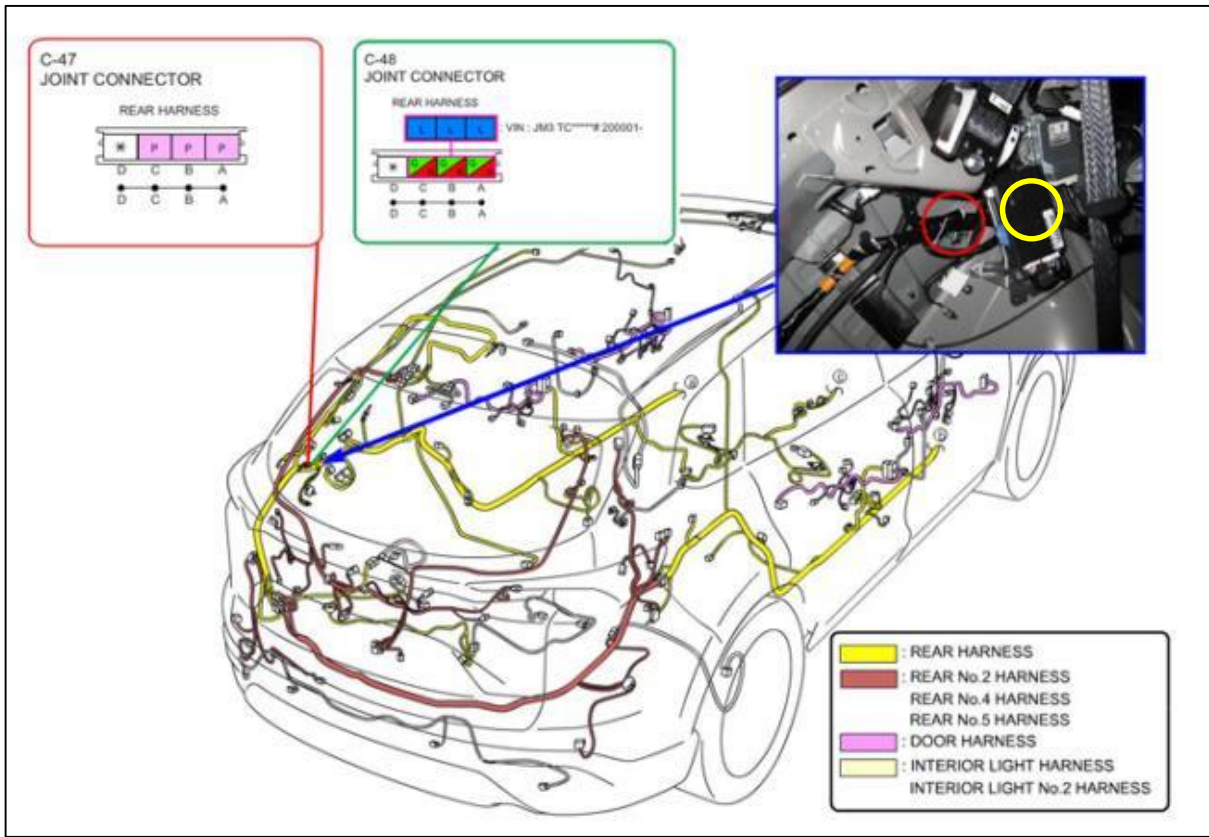
Overview

- a) Slide the front seats to the full rear position.
 - b) Disconnect the negative battery cable.
 - c) Cut the wires at eight (8) joint connectors located in four (4) areas and crimp them using tube sleeves and SST 49JP-03-001. (Locations on repair may be in different order.)
 - d) Connect the negative battery cable and perform the initialization procedures. Refer to MGSS online or the workshop manual "NEGATIVE BATTERY TERMINAL DISCONNECTION/CONNECTION".
 - e) Start the engine and confirm if any DTCs are not stored. If they are stored, clear it according to MGSS online or the workshop manual.
 - f) Install the removed parts in the reverse order of the removal.
 - g) Slide the front seats to the original position.
- Joint Connector Locations

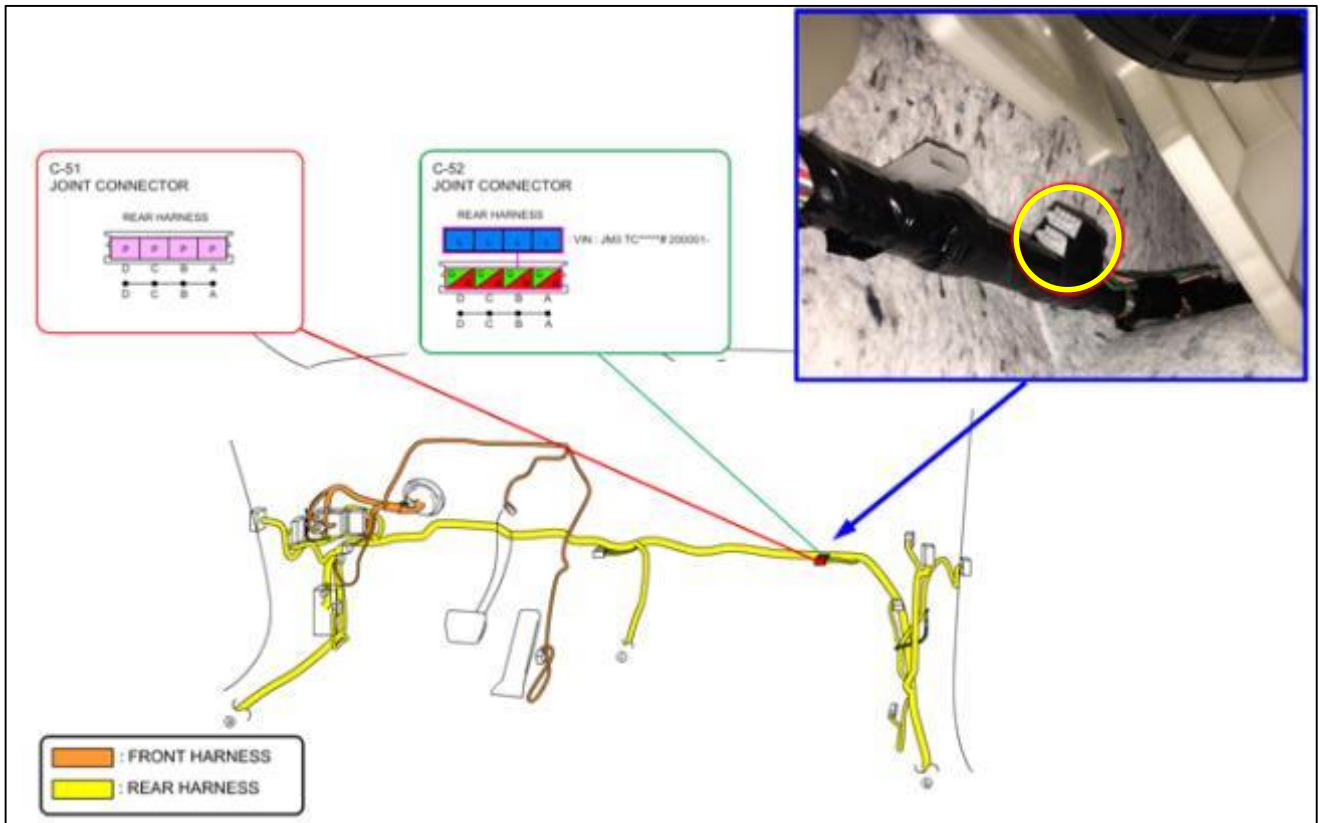
C-54 and C-55



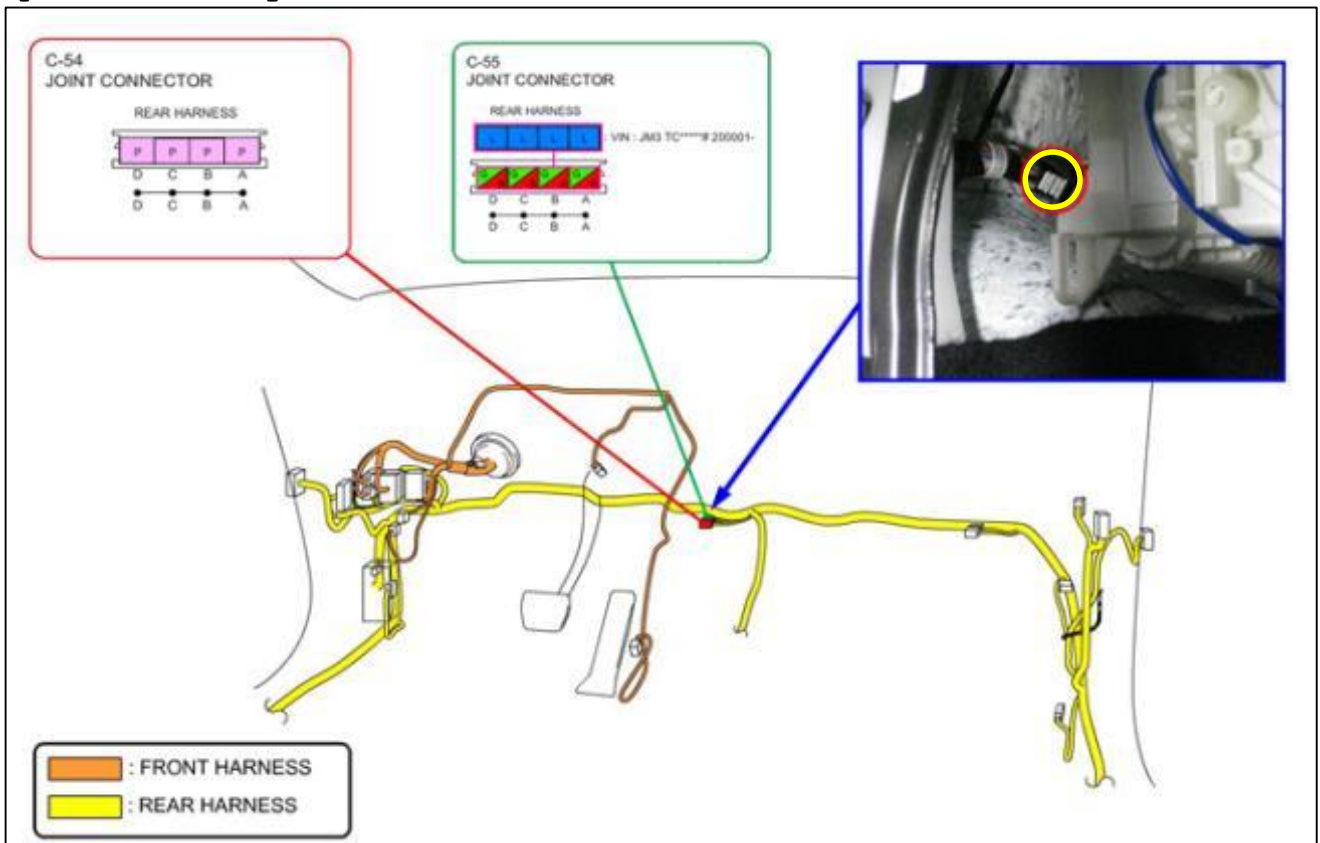
C-47 and C-48



C-51 and C-52



C-54 and C-55 - Please review specific note in the repair procedure and updated warranty information.



Repair on C-43 and C-44

1. Locate Joint Connector C-43 and C-44 (Refer to "Joint Connector Locations")

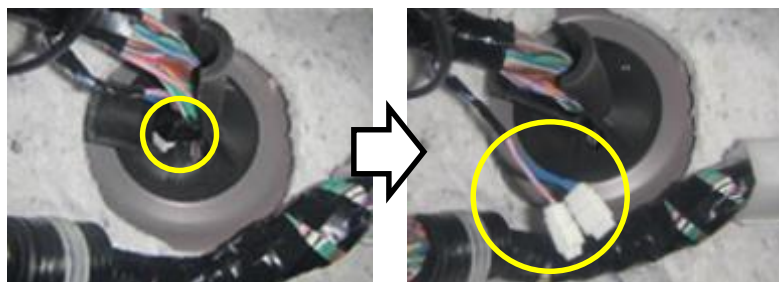


2. Open the rubber boot and cut the tape to gain access to joint connectors C-43 and C-44.

Rubber boot opened



Tape cut for access to joint connectors

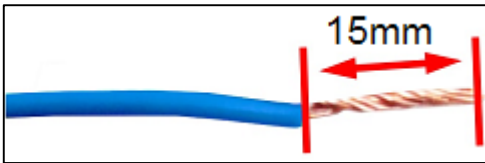


NOTE: Take care not to cut wires.

3. Remove Joint Connector C-43 and C-44 by cutting the wiring harness at the joint connectors.



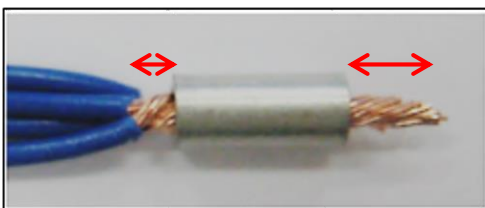
4. Remove 15mm insulation from the wiring harness.



5. Twist the "L" (blue) wires, exposed copper ends together. Repeat this step for the "P" (pink) wires.



6. Insert the tube sleeve.



NOTE:

- Use 1.25 tube sleeve for 2 or 3 wires
- Use 2.0 tube sleeve for 4 wires
- All exposed copper should be seen at the tip and also at the insulation.

7. Use crimping tool to crimp the "L" (blue) wires together as shown. Repeat this step for the "P" (pink) wires.

Use 1.25 crimp for 2 or 3 wires	Use 2.0 crimp for 4 wires

NOTE:

- Crimp once at the center of the tube sleeve. Crimping at the edge may damage wires.
- Press the handles until it releases by itself.

8. Confirm proper crimping by holding the crimped tube sleeve with one hand and pulling on each wire with your other hand.

9. Insert protective cap. Repeat this step for the "P" (pink) wires.



10. Secure the protective cap with tape. Repeat this step for the "P" (pink) wires.



11. Fix the protective caps to the wire harness using a zip tie and cut off the excess material.



Repair on C-47 and C-48

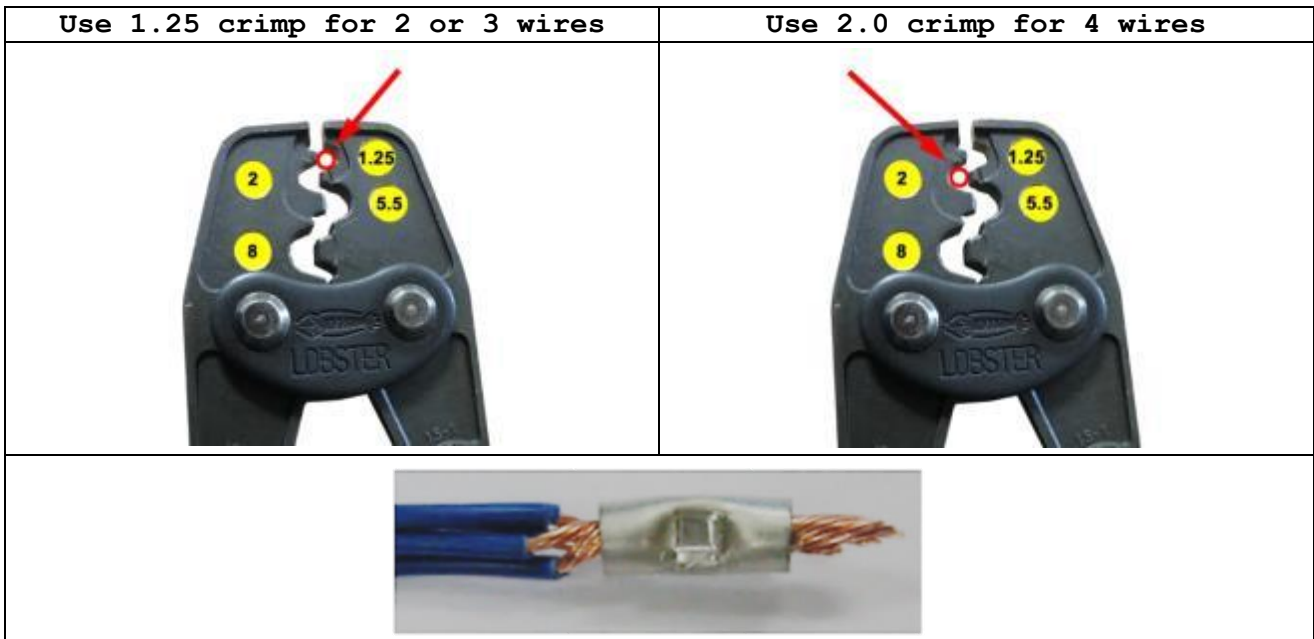
12. Remove the LH trunk side trim. Refer to MGSS online or the workshop manual "TRUNK SIDE TRIM REMOVAL/INSTALLATION".

13. Locate Joint Connector C-47 and C-48 (Refer to "Joint Connector Locations")



14. Remove Joint Connector C-47 and C-48 by cutting the wiring harness at the joint connectors. (Refer to step 3 image)

15. Use crimping tool to crimp the "L" (blue) wires together as shown. Repeat this step for the "P" (pink) wires. (Refer to step 4-10).



NOTE:

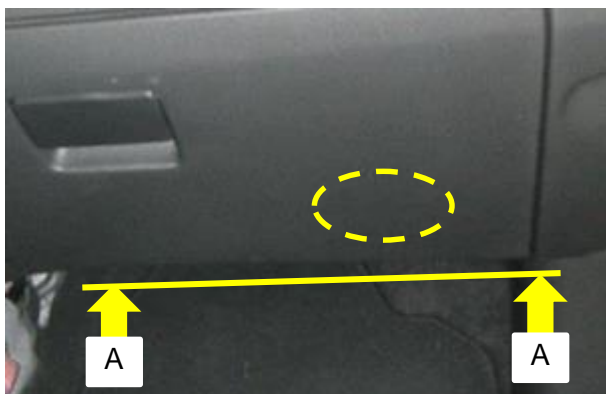
- Crimp once at the center of the tube sleeve. Crimping at the edge may damage wires.
- Press the handles until it releases by itself.

16. Fix the protective caps to the wire harness using a zip tie and cut off the excess material. (Refer to step 11 image).

Repair on C-51 and C-52

17. Remove the dashboard under cover. Refer to MGSS online or the workshop manual "DASHBOARD UNDER COVER REMOVAL/INSTALLATION".

18. Locate the C-51 and C-52 connectors.



View A-A



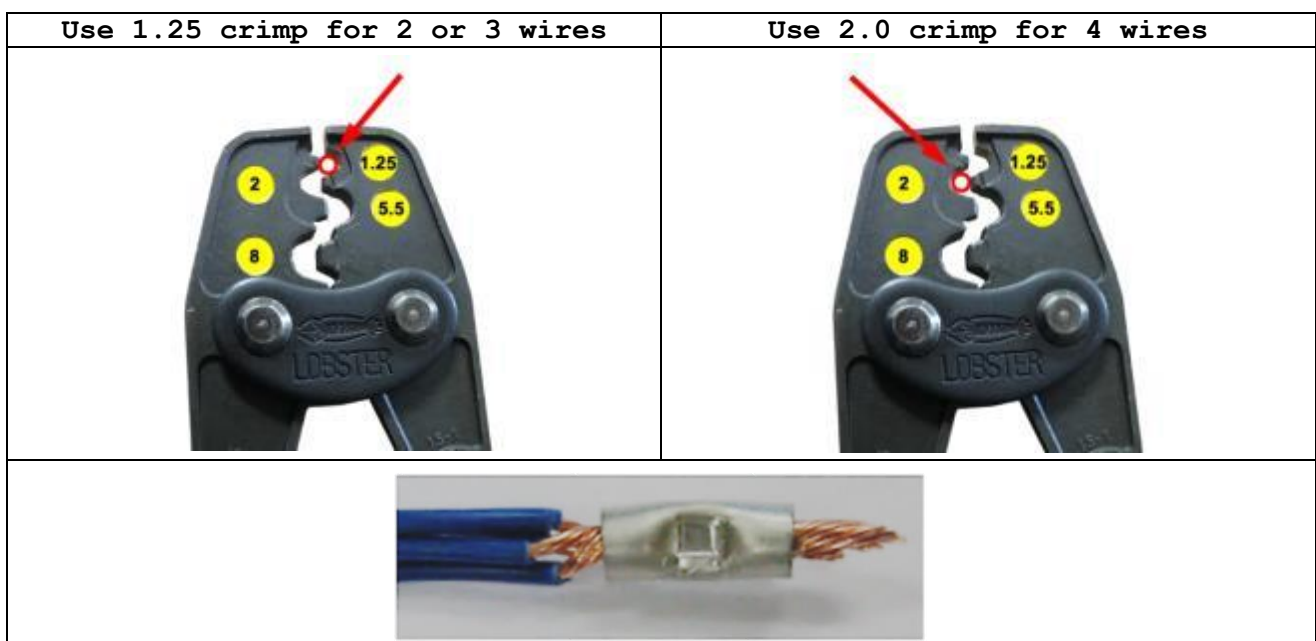
19. Carefully cut the tape while holding the connectors and wires in place.

NOTE:

- An art knife (or equivalent blade) is recommended since it is not easy to access the connectors.
- Take care not to cut wires.

20. Remove Joint Connector C-51 and C-52 by cutting the wiring harness at the joint connectors. (Refer to step 3 image)

21. Use crimping tool to crimp the "L" (blue) wires together as shown. Repeat this step for the "P" (pink) wires. (Refer to step 4-10).



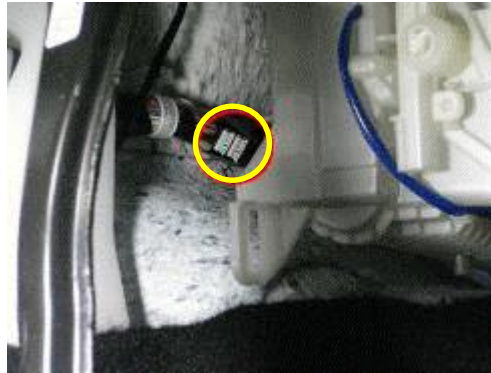
NOTE:

- Crimp once at the center of the tube sleeve. Crimping at the edge may damage wires.
- Press the handles until it releases by itself.

22. Fix the protective caps to the wire harness using a zip tie and cut off the excess material. (Refer to step 11 image)

Repair on C-54 and C-55 NOTE: It is recommended to remove the steering shaft bolt B455-32-099B and replace with a new bolt when repairing these connectors. This removal gains additional access for the repair.

23. Remove the RH and LH console side wall panels. Refer to MGSS online or the workshop manual "SIDE WALL REMOVAL/INSTALLATION".
24. Locate Joint Connector C-54 and C-55 (Refer to "Joint Connector Locations")



25. Carefully cut the tape while holding the connectors and wires in place.

NOTE:

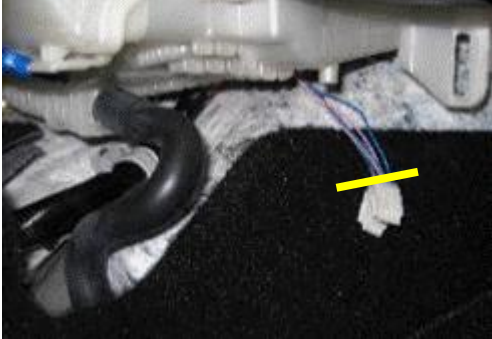
- An art knife (or equivalent blade) is recommended since it is not easy to access the connectors.
- Take care not to cut wires.



26. Pull the joint connectors to the passenger side for repair reaching under the HVAC Unit from the passenger side.



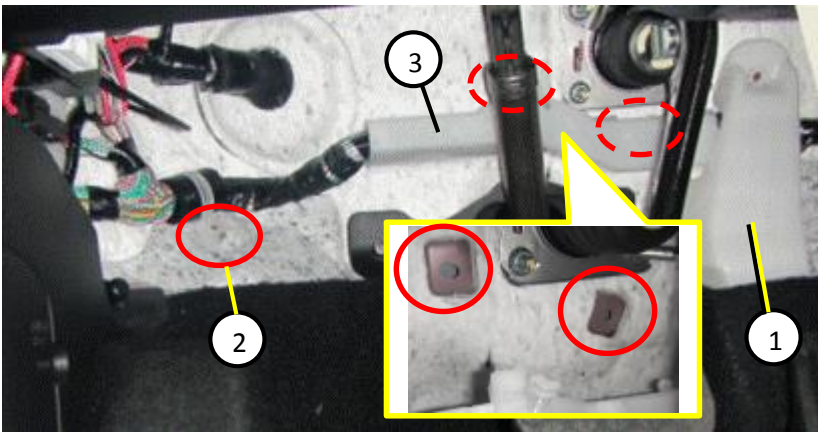
27. Remove Joint Connector C-54 and C-55 by cutting the wiring harness at the joint connectors.



28. If the connectors cannot be pulled out enough for the work, proceed to next step. If it can be, proceed to step 37.

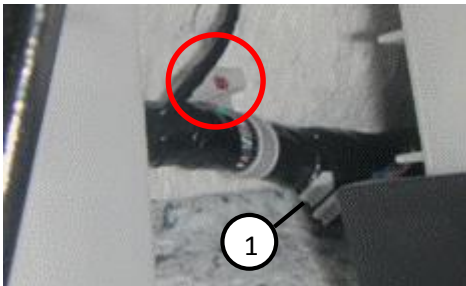


29. Remove the bracket (1) and release a harness clip (2) and two clips for harness protector (3)

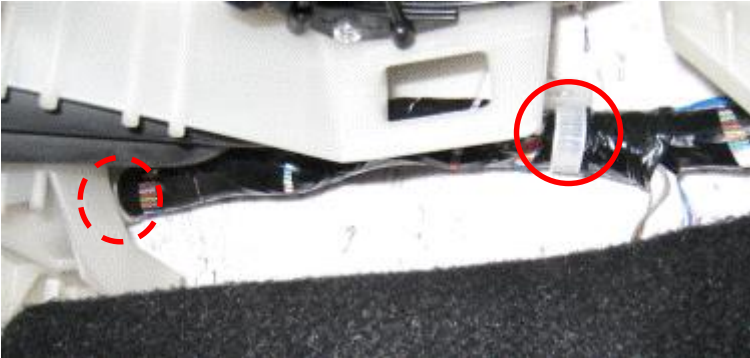


NOTE: When harness protector clips are damaged, replace the harness protector with new one.

30. Release harness clips near C54 and C55 (1) and harness protector (2)



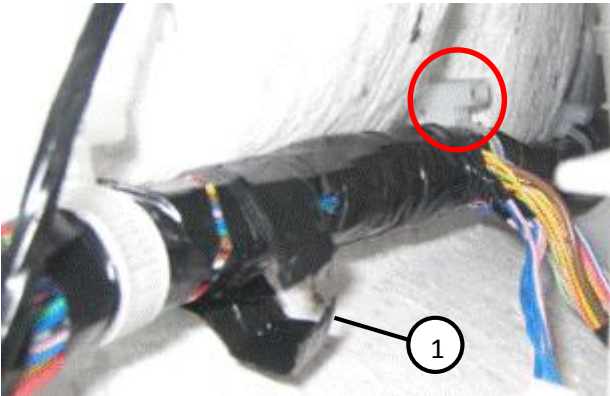
31. Release two harness clips at the passenger side



32. Release a harness clip under HVAC



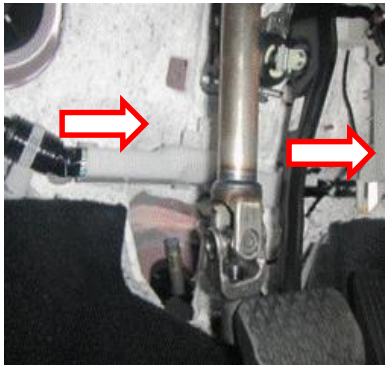
33. Release a harness clip backside of HVAC near C54 and C55 (1)



NOTE: This clip cannot be installed again.

34. If necessary, remove the lower joint bolt for the intermediate shaft. Refer to MGSS online or the workshop manual "INTERMEDIATE SHAFT REMOVAL/INSTALLATION". Then go to procedure 35.
If not necessary to remove the lower joint bolt for the intermediate shaft, go to procedure 36.

35. Pull the rear harness to the passenger side.



36. Pull Joint Connector C-54 and C-55 to passenger side reaching under the HVAC Unit from the passenger side.

37. Remove Joint Connector C-54 and C-55 by cutting the wiring harness at the joint connectors. (Refer to step 3 image)

38. Use crimping tool to crimp the "L" (blue) wires together as shown. Repeat this step for the "P" (pink) wires. (Refer to step 4-10.)

Use 1.25 crimp for 2 or 3 wires	Use 2.0 crimp for 4 wires

NOTE:

- Crimp once at the center of the tube sleeve. Crimping at the edge may damage wires.
- Press the handles until it releases by itself.


39. Fix the protective caps to the wire harness using a zip tie and cut off the excess material. (Refer to step 11 image)

40. Install the lower joint bolt [R] for the intermediate shaft if removed at procedure 34.

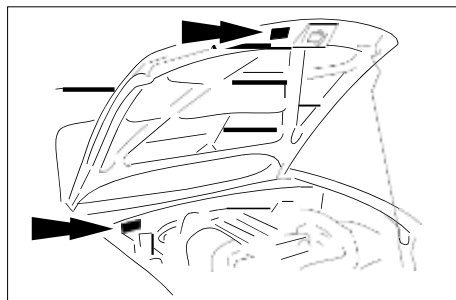
41. Reconnect Battery and reinitialize power windows and liftgate and set radio stations

B. CAMPAIGN LABEL INSTALLATION

1. Fill out a blue "Campaign Label" (9999-95-065A-06) with Campaign No: "3419E", your dealer code, today's date.

CAMPAIGN LABEL	
CAMPAIGN NO:	_____
	
DEALER CODE:	____/____/____
<small>P/N 9999-95-065A-06</small>	

2. Affix it to the hood or bulkhead as shown:



3. Return the vehicle to customer.