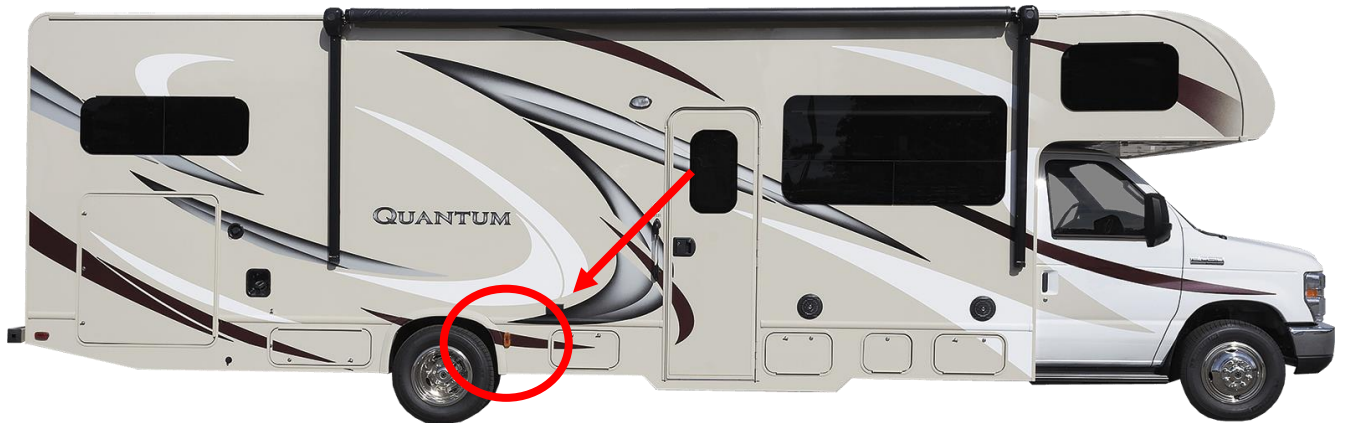




# Thor Motor Coach Recall Repair Instructions

Recall #	<b>19V-215 2019-147</b>		
Description/Title:	<b>RW28 Marker Lights</b>		
Affected Product Line(s):	<b>Certain Model Year 2018 &amp; 2019 RW28 Quantum motorhomes</b>		
Service Campaign # :	<b>RC000167</b>	Released Date:	<b>4/17/2019</b>
Repair Code:	<b>Inspect: TMCRC80480Y Inspect &amp; Repair: TMCRC80480V</b>	Document Date:	<b>4/17/2019</b>
Time Allowed:	<b>Inspect: 0.1 Inspect &amp; Repair: 1.0</b>	Document Revision:	<b>A</b>



## Issue

It has been discovered that on Certain Model Year 2018/2019 RW28 Quantum Motorhomes, they may be missing the mid-ship marker lights, which is a non-compliance of FMVSS 108. Without the mid-ship marker lights, other drivers may underestimate the length of the motorhome which may cause an accident that may, in turn, cause property damage, injury, or death.

## Parts Needed

Recall Kit: TMC item number 0444566

Shop Supplies: (1) #8 self-tapping screw



# Thor Motor Coach Recall Repair Instructions

## Instructions

### Inspection:

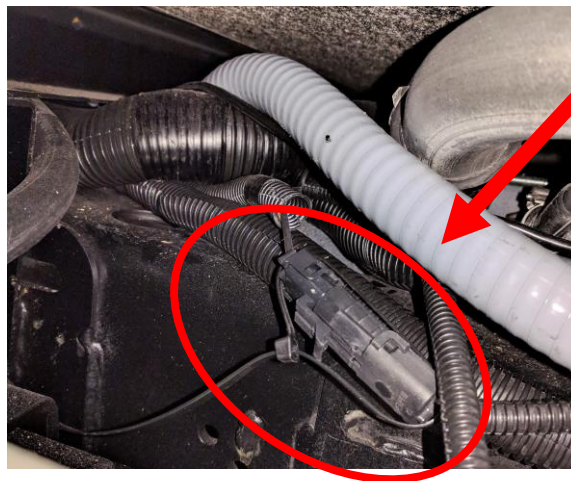
1. Visually inspect that the mid-ship marker lights are installed on both sides of the motorhome. If they are, no repair is needed and recall is complete. (*Photos showing marker lights are installed already will be required for claim.*)
2. If marker lights are not installed, continue on to Step 3.

### Repair:

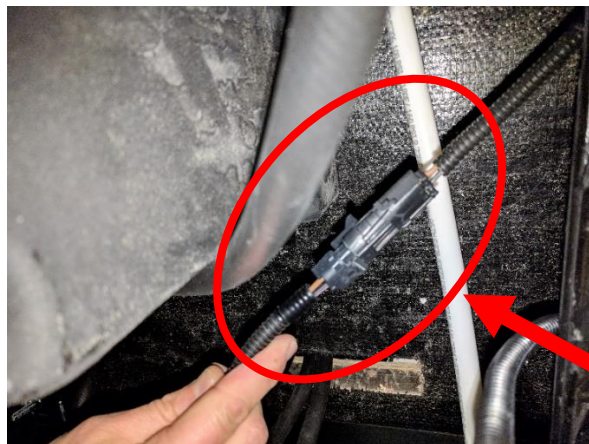
#### (Connecting Recall Harness)

See attached print TEE3952 for harness layout (Page 5)

3. Find and disconnect 2 pin connectors between chassis harness and taillight harness located above chassis rail near leaf springs on driver side. Zip tie will need to be removed to disconnect the 2 pin connectors.



4. Attach the two pin connectors to their mates on the recall harness. (Photo below shows the original connectors plugged into the recall harness.)



5. Use #8 self-tapping screw to ground ring terminal to any steel on the chassis structure.



### (Installing Marker Lights)



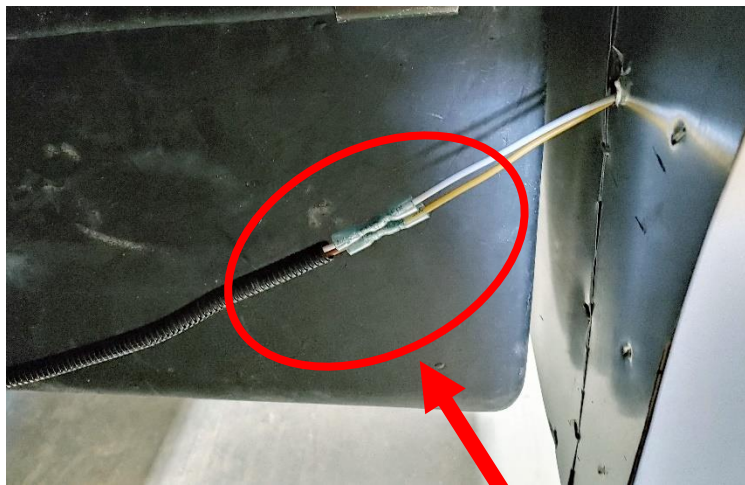
6. Dry fit the marker light base to ensure proper fit. When dry fit is correct, mark the location at which the hole should be drilled.
7. This should be directly in front of the fender skirt as illustrated in the pictured above.
8. Be sure to move any harnesses, lines, or other items that may be in the way before drilling the hole.

**NOTE: WHEN DRILLING THE HOLES FOR THE MARKER LIGHTS BE SURE THAT THE SIDEWALL IS NOT DAMAGED IN THE PROCESS. TMC WILL NOT COVER ANY UNIT DAMAGE THAT OCCURS IN THE PROCESS OF THIS REPAIR.**



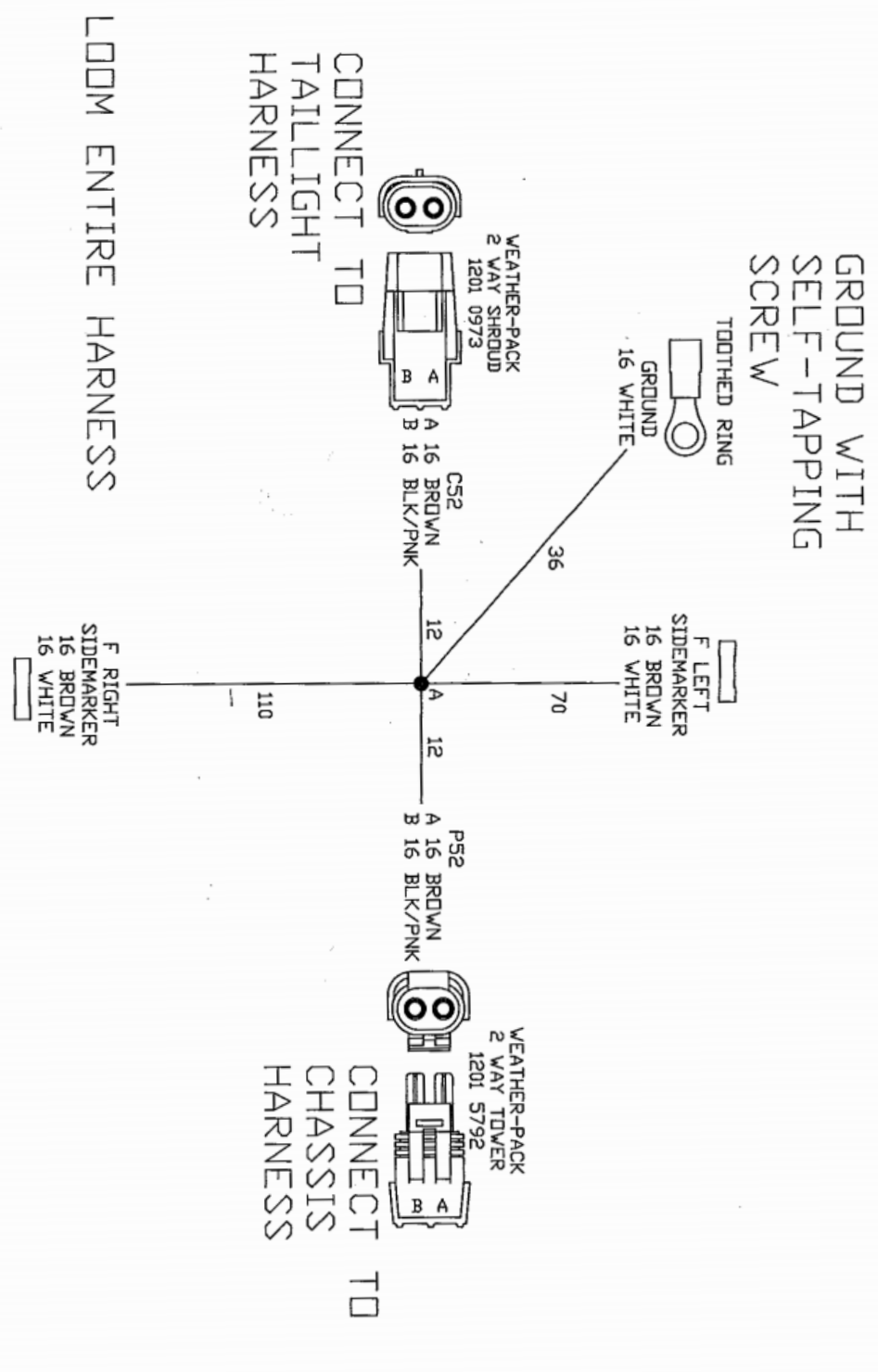
## Thor Motor Coach Recall Repair Instructions

9. Drill a 7/8" hole. Make sure that you do not damage the sidewall.
10. Screw the marker light to the sidewall, making sure both attached wires are securely thru the hole.
11. Seal around the marker light base. Be sure to clean around base to remove any excess sealant.
12. Repeat steps 6-12 on the other side of the unit making sure that the location of the marker lights will match one another.
13. Connect each pair of side marker wires to each side marker light and shrink wrap.





REV	DESCRIPTION	DATE	BY	ECN
-	INITIAL RELEASE	-	-	-



Loom Entire Harness

**THOR MOTOR COACH**

ASST. MGR. 1 of 1 Date 8/13/19

SIDEMARKER RW28 RECALL REPAIR HARNESS

EW28

TEC3962-00

Thor Motor Coach  
1-877-500-1020  
Recall # 19V-215 (NHTSA) / 2019-147 (Transport Canada)  
Page #5