

AKA3 - Reworking Luggage Compartment Bracket (Stop Delivery/Recall Campaign)

Model Line: **718 Boxster (982)/718 Cayman (982)**

Model Year: **As of 2017 up to 2019**

Subject: **Luggage compartment bracket**

Information: **Due to an inadequate connection between the lower longitudinal member and cross member, legal requirements relating to the integrity of the fuel system will not be met in the event of a head-on collision.**

Remedial Action: Secure the lower longitudinal member to the cross member using additional blind rivets.

Affected Vehicles: Only the vehicles assigned to the campaign (see also PIWIS Vehicle information). This campaign affects 16,171 vehicles in North America.

Required parts and materials

Parts Info:	Part No.	Designation	Qty.
	00004323002	⇒ Blind rivet	up to 6 ea. (As many as required)

Materials: **Required materials** (usually already available in the Porsche dealership):

- Corrosion protection wax (commercially available), e.g. Part No.: 00004330551 *
- Corrosion protection paint (commercially available)*
- Clean, lint-free cloth
- De-greasing cleaning agent

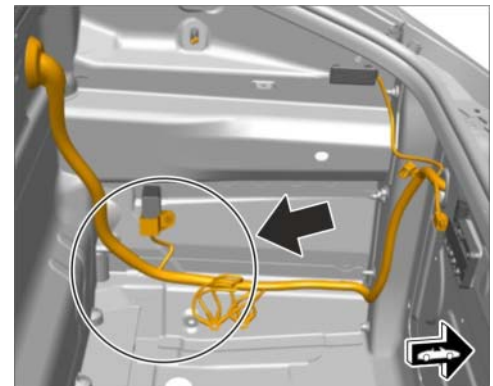
* For warranty processing, the Part No. **AKA30000001** with the "expendable items" designation can be invoiced as an **additional part** in the warranty claim. Maximum cost: USD \$2.00.

Required tools

- Tools:
- **PNA 713 001 5 - Rivet Tool**
 - Commercially available HSS twist drill with a diameter of 7 mm
 - 90° countersink tool or triangular scraper
 - Battery-operated or hand drill
 - Water-resistant pen
 - Commercially available body brush (approx. 25 mm wide)
 - Center punch

Preparatory work

- Work Procedure: 1 Remove luggage compartment liner ⇒ *Workshop Manual '700519 Removing and installing trim panel for front luggage compartment'*.
- 2 Loosen main wire harness in front luggage compartment in the marked area ⇒ *Main wire harness in luggage compartment (front)* -**arrow**- on the longitudinal member at the left and right and set it aside.



Main wire harness in luggage compartment (front)

Reworking luggage compartment bracket at the left and right

Work
Procedure:



Information

The **procedure described below** for reworking the luggage compartment bracket **must always be observed**.

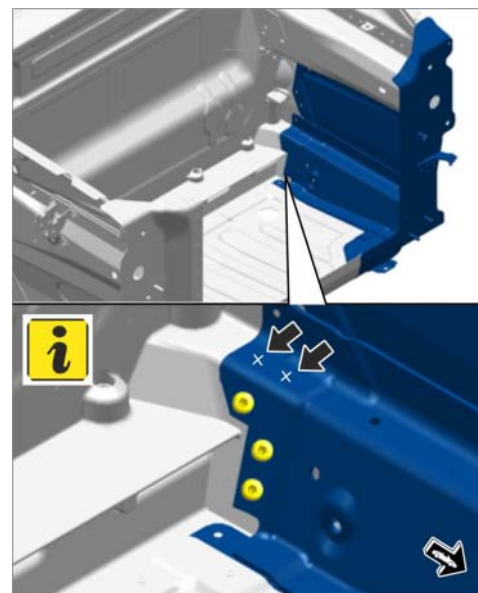


Information

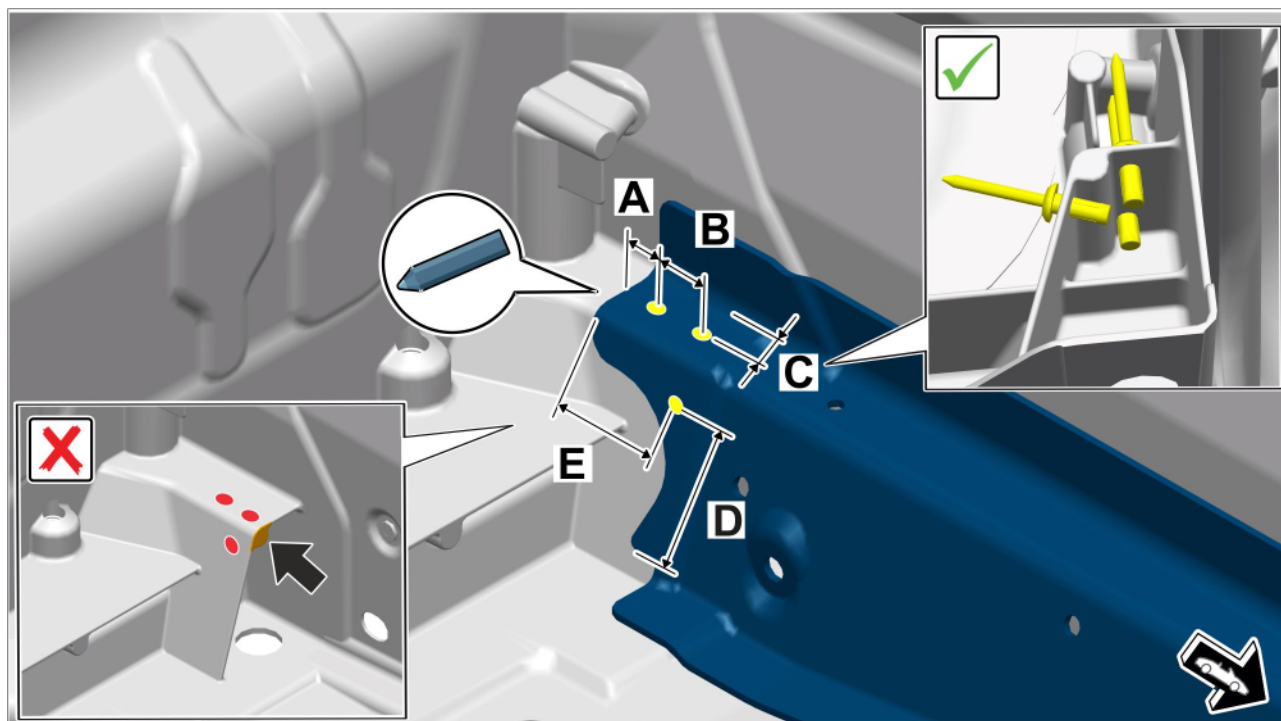
On vehicles that were already fitted with a new luggage compartment bracket during body repairs, only the two additional blind rivets are required on the upper longitudinal member ⇒ *Luggage compartment bracket following body repairs* -**Arrows**-.

The required dimensions **A, B, C** for the two bores must be used as described in Step 1.1.

- 1 Prepare for installing the blind rivets on the lower longitudinal member in the luggage compartment at the left and right.



Luggage compartment bracket following body repairs



Marking drilling points on the longitudinal member

- 1.1 Mark the positions of the bores for the additional blind rivets, which will be used to secure the lower longitudinal member to the lower cross member. To do this, mark the positions for the bores using a water-resistant marker as shown.

The specified dimensions must always be observed. If not, the reinforcement \Rightarrow *Marking drilling points on the longitudinal member -arrow-* will be damaged while drilling and it will not then be possible to secure the blind rivets properly.

- **Dimension A** = 12 mm
- **Dimension B** = 28 mm
- **Dimension C** = 11 mm
- **Dimension D** = 56 mm
- **Dimension E** = 44 mm

- 1.2 Punch the markings you made on the longitudinal member using a center punch to make it easier for the drill to get a grip during subsequent drilling.



Risk of damage or injury from debris flying around during grinding, drilling and milling

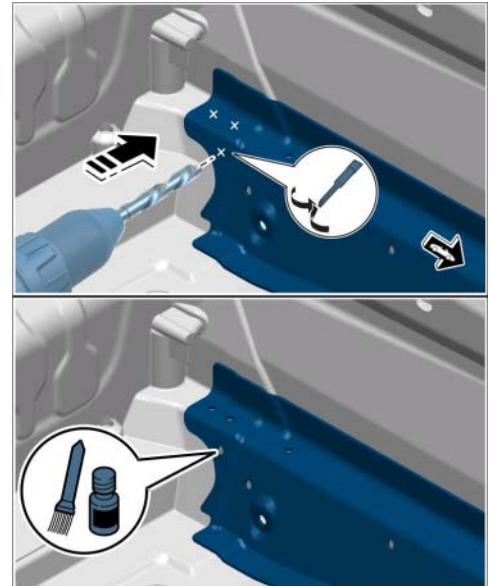
- **Risk of eye injuries**
- \Rightarrow **Wear protective goggles.**



Toxic substances

- **Danger of poisoning or suffocation**
- \Rightarrow **Ventilate the work area well.**
- \Rightarrow **Never ingest or inhale.**
- \Rightarrow **Read specific information on the Hazard Sheet.**
- \Rightarrow **Wear personal protective gear.**

- 1.3 Carefully drill the longitudinal member at the previously marked and punched positions using the hand drill and a **twist drill bit with a diameter of 7 mm**.
Be particularly careful not to damage adjacent components while drilling and make sure to remove any drill chips immediately using a vacuum cleaner. Use a suitable base, if necessary, to protect components.
- 1.4 De-burr bores using a triangular scraper or a 90° tapered countersink.
- 1.5 Apply primer to the surfaces at the bores that are exposed as a result of drilling.



Preparing for installing blind rivets

- 2 Secure longitudinal member to the cross member at the left and right.
 - 2.1 Insert blind rivet into the tip of the blind riveting tool and fit it as far as it will go into one of the bores using the blind riveting tool.
 - 2.2 Hold the blind riveting tool at a right angle to the longitudinal member and press down firmly.
 - 2.3 Press the trigger on the blind riveting tool to fix the rivet.
 - 2.4 After fixing each rivet, hold the blind riveting tool with the tip facing downwards until the spent mandrel falls out of the tip. Gather up spent mandrels and dispose of them.
 - 2.5 Repeat the riveting procedure (Steps 2.1 to 2.4) for the second and third bore.



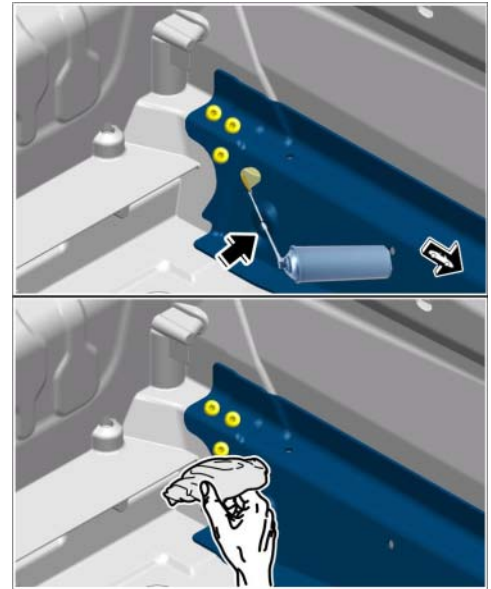
Securing longitudinal member to cross member

⚠ WARNING

Highly flammable or explosive materials

- **Danger of fire or explosion**
- ⇒ **Avoid contact with hot parts or sources of ignition.**
- ⇒ **Use suction to remove ignitable vapors.**
- ⇒ **Attach warning sign in a clearly visible position.**

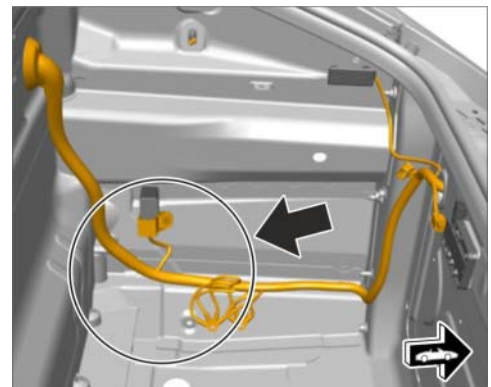
- 3 Apply corrosion protection at the left and right.
 - 3.1 Shake the spray can well before use. To ensure that the wax can be applied completely and flows freely through the spray pipe, apply corrosion protection wax to a paper towel or similar item for approx. 2 seconds.
 - 3.2 Insert the spray pipe through the bore ⇒ *Applying corrosion protection wax -arrow-* on the longitudinal member.
 - 3.3 Press the spray can and pull the spray pipe slowly and evenly out of the longitudinal member while spraying. Repeat this spraying process at least twice until a homogenous layer of wax is applied inside the longitudinal member.
 - 3.4 Remove any excess or dripping corrosion protection wax completely using a clean, lint-free cloth.



Applying corrosion protection wax

Concluding work

- Work Procedure: 1 Secure main wire harness in front luggage compartment in the marked area ⇒ *Main wire harness in luggage compartment (front) -arrow-* on the longitudinal member at the left and right.
- 2 Install luggage compartment liner ⇒ *Workshop Manual '700519 Removing and installing trim panel for front luggage compartment'*.
- 3 Enter the campaign in the Warranty and Maintenance booklet.



Main wire harness in luggage compartment (front)

Warranty processing

Scope 1:

Working time:		
Reworking luggage compartment bracket at the left and right		Labor time: 145 TU
Includes:	Removing and installing luggage compartment liner	
	Loosening and securing main wire harness in front luggage compartment	
Parts required:		
00004323002	Blind rivet	up to 6 ea. (As many as required)
Required materials:		
AKA30000001*	Expendable items* (Corrosion protection paint, corrosion protection wax, cleaner)	1 ea.* (for warranty invoicing only)
* For warranty processing, enter the Part No. AKA30000001 with the "expendable items" designation as an additional part costing USD \$2.00 in the warranty claim.		
⇒ Damage Code AKA3 099 000 1		

Important Notice: Technical Bulletins issued by Porsche Cars North America, Inc. are intended only for use by professional automotive technicians who have attended Porsche service training courses. They are written to inform those technicians of conditions that may occur on some Porsche vehicles, or to provide information that could assist in the proper servicing of a vehicle. Porsche special tools may be necessary in order to perform certain operations identified in these bulletins. Use of tools and procedures other than those Porsche recommends in these bulletins may be detrimental to the safe operation of your vehicle, and may endanger the people working on it. Properly trained Porsche technicians have the equipment, tools, safety instructions, and know-how to do the job properly and safely. Part numbers listed in these bulletins are for reference only. The work procedures updated electronically in the Porsche PIWIS diagnostic and testing device take precedence and, in the event of a discrepancy, the work procedures in the PIWIS Tester are the ones that must be followed.

© 2019 Porsche Cars North America, Inc.