

January 25, 2019

Version 1

Safety Recall: 2017-19 Ridgeline Fuel Pump Cracks or Leak Inspection

AFFECTED VEHICLES

Year	Model	Trim	VIN Range
2017-19	Ridgeline	ALL	Check the iN VIN status for eligibility

BACKGROUND

Certain vehicle cleaning detergents/agents may interact adversely with the fuel pump and feed port, causing cracks that may lead to pressurized fuel leaks.

CUSTOMER NOTIFICATION

Owners of affected vehicles will be sent a notification of this campaign.

Do an iN VIN status inquiry to make sure the vehicle is shown as eligible.

Some vehicles affected by this campaign may be in your new or used vehicle inventory.

Failure to repair a vehicle subject to a recall or campaign may subject your dealership to claims or lawsuits from the customer or anyone else harmed as a result of such failure. To see if a vehicle in inventory is affected by this safety recall, do a VIN status inquiry before selling it.

POSSIBLE CAUSES

The fuel pump feed line connector or the top surface of the fuel pump is cracked.

CORRECTIVE ACTION

Inspect the fuel pump, and replace if needed. Install the fuel pump cover kit.

CUSTOMER INFORMATION:The information in this bulletin is intended for use only by skilled technicians who have the proper tools, equipment, and training to correctly and safely maintain your vehicle. These procedures should not be attempted by "do-it-yourselfers," and you should not assume this bulletin applies to your vehicle, or that your vehicle has the condition described. To determine whether this information applies, contact an authorized Honda automobile dealer.

PARTS INFORMATION

Expected failure rate of the pump is very low. Order fuel pump and retainer only after confirming a new fuel pump is required based on the inspection procedure. Do not order for inventory.

Part Name	Part Number	Quantity
Fuel Pump Cover Kit	17063-T6Z-305	1
Fuel Pump (if needed)	17045-TZ5-A10	1

WARRANTY CLAIM INFORMATION

Operation Number	Description	Flat Rate Time	Defect Code	Symptom Code	Template ID	Failed Part Number
3105J1	Inspect the fuel pump for leaks and cracks. If no leaks or cracks are found, install the fuel pump cover kit.	1.2 hr	6FX00	Q3V00	A19013A	17045-TZ5-A10
3105J2	Inspect the fuel pump for leaks and cracks. If leaks and or cracks are found, replace the fuel pump and install the fuel pump cover kit.	1.8 hr	6FX00	Q3V00	A19013B	17045-TZ5-A10

Skill Level: Repair Technician

REPAIR PROCEDURE

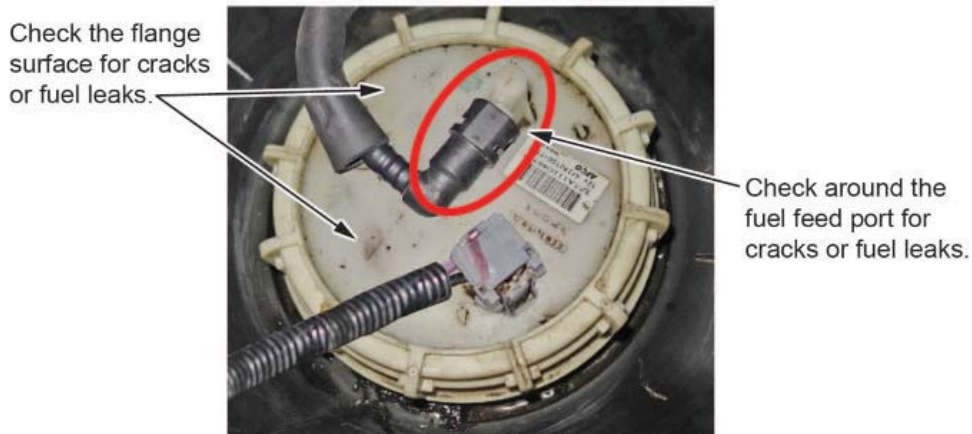
1. Remove the rear seat to gain access to the fuel tank unit. Refer to the service information.
2. Remove the fuel tank access panel.
3. Clean the fuel pump surface with a clean shop towel, and check for cracks.

NOTE

Do not use any chemicals to clean the surface, only use a clean shop towel.

4. Run the engine for **1 minute** to check for fuel leaks.

5. Relieve the fuel pressure; refer to the service information. Then, remove the fuel line, and check for cracks at the fuel feed port.
 - If no leaks or cracks are found, go to step 6 and install the fuel pump cover kit.
 - If the fuel pump is leaking and or cracks are found, replace the fuel pump; refer to the service information. Then, go to step 6 and install the fuel pump cover kit.

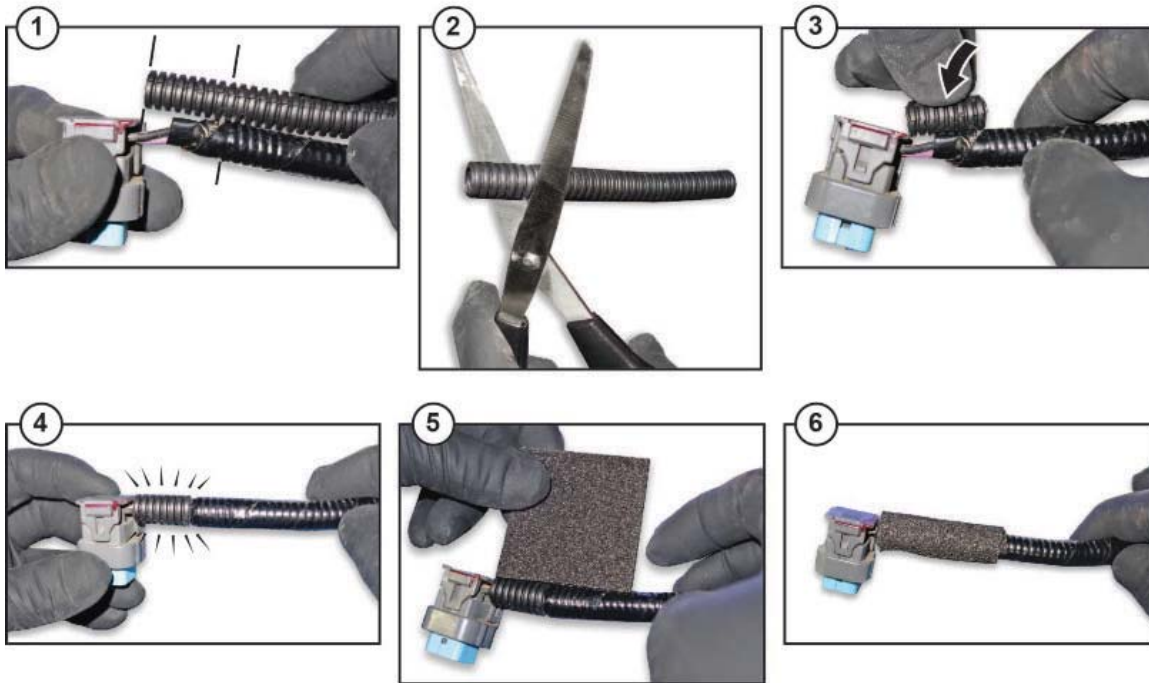


6. Disconnect the connector.

7. Place the corrugated tubing next to the connector and the corrugated tube on the wiring harness, and cut to fit as shown. Then, wrap a piece of EPT foam tape around the area as shown.

NOTE

If the corrugated tubing is already against the connector, this step is not needed.



8. Install the cover assembly, and make sure the arrow on the cover lines up with the marks on the fuel tank and the cover assembly is fully snapped onto the lock nut.



9. Connect the fuel line and the connector as shown.

Reconnect the connector and route across the cover as shown.



10. Close the lid on the cover assembly.

Close the cover lid.



11. Install the fuel tank access panel and rear seat.

12. **For California residents only:** Fill out a Vehicle Emissions Recall - Proof of Correction certificate, and use Q3V as the recall number. Give the certificate to your customer, and advise him or her to keep it as proof that the recall was completed. Your customer will need to submit this certificate to the DMV only if the DMV requests it. If you need more certificates, use reorder number Y0657.

Vehicle Emission Recall - Proof of Correction				
License Number	Make	Year/Model	Body Type	Vehicle Identification Number
Manufacturer			Recall Number Q3V	
The above described vehicle has been repaired, modified and/or equipped with emission control devices to meet applicable California Emission Control Laws.				
Dealer's Name		Address, City, State and Zip		
Date	Dealer's Authorized Signature			
	x			
Return this certificate to DMV <u>only</u> when required - otherwise retain for your records.				
Y0657	NCL 24832 (0212)			

END