



Technical Bulletin

Identifying and Replacing Non-Conforming Axle Beams on Meritor Front Non-Drive Steer Axles

3100H7860 Program

Hazard Alert Messages

Read and observe all Warning and Caution hazard alert messages in this publication. They provide information that can help prevent serious personal injury, damage to components, or both.

WARNING

To prevent serious eye injury, always wear safe eye protection when you perform vehicle maintenance or service.

Park the vehicle on a level surface. Block the wheels to prevent the vehicle from moving. Support the vehicle with safety stands. Do not work under a vehicle supported only by jacks. Jacks can slip and fall over. Serious personal injury and damage to components can result.

Use a brass or leather mallet for assembly and disassembly procedures. Do not hit steel parts with a steel hammer. Pieces of a part can break off. Serious personal injury and damage to components can result.

How to Obtain Additional Maintenance, Service and Product Information

Refer to Maintenance Manual 2, Front Non-Drive Steer Axles; and Maintenance Manual MM-0409, Wheel-End Components, for additional information. To access these publications, visit Literature on Demand at Meritor.com.

Non-Conforming Axle Beam Identification and Replacement

This technical bulletin provides procedures for identifying and replacing non-conforming axle beams on Meritor front non-drive steer axles. You should only perform these procedures if you have been notified by the OEM. The OEM has determined which axles are suspect based on the VIN.

A Pre-Call Worksheet is provided at the end of this technical bulletin to assist in recording information.

Required Parts

If an axle requires replacement, contact the Meritor OnTrac™ Customer Call Center at 866-668-7221 or email the center at ontrac@meritor.com. OnTrac will ship you the required service kit.

Table A: Axle Specification Numbers included within this Program

Meritor Axle Model Number	Kit Number
FF967NX30	FRK-16-10173
FF967NX31	FRK-16-10174
FF967NX32	FRK-19-10206
FF967NX33	FRK-16-10175
FF967NX35	FRK-16-10176
FF967NX36	FRK-16-10177
FF967NX37	FRK-16-10178

Table B: Kit Contents

Description	Part Number	Quantity
Finished I-beam Assembly	Per Model Specification	1
Hub Cap Gasket	2208Y363	2
Wheel Seal	A1205X2832	2
Brake Backing Plate Hardware-Includes the following parts:		
Brake Backing Plate Bolt	15X1798	16
Brake Backing Plate Nut	NL1121	16
Brake Backing Plate Washer	1229L4198	16

Identification Procedure

1. Park the vehicle on a level surface. Block the wheels to prevent the vehicle from moving. Set the parking brake.
2. On the front of the axle, find and record the forging date code and heat code stamped on the axle, and the axle serial number located on the identification tag on the center of the axle. It may be necessary to clean paint and debris from the area in order to see the numbers. Figure 1, Figure 2 and Figure 3.

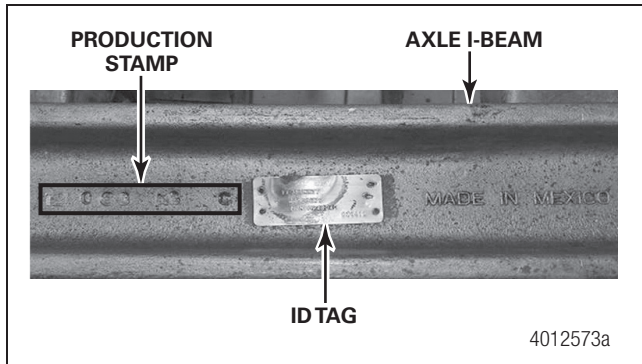


Figure 1

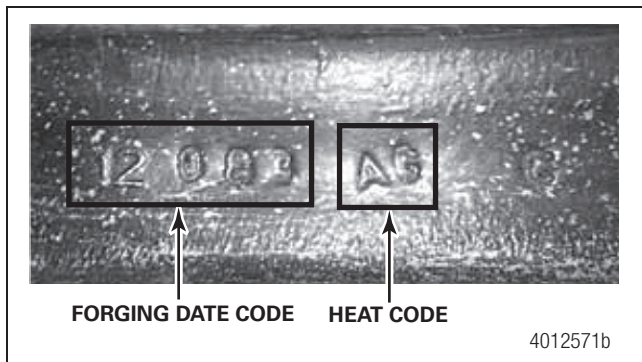


Figure 2

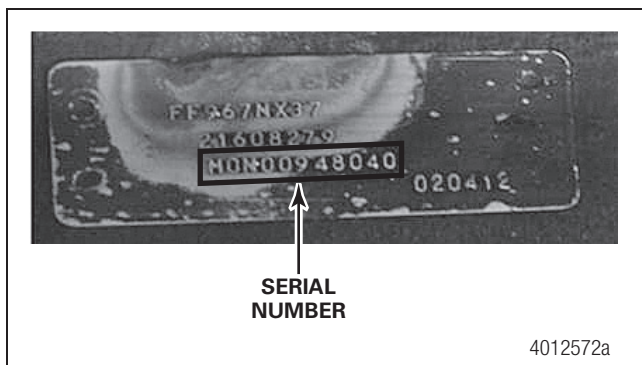


Figure 3

3. On the rear of the axle, find and record the machining code embossed on the left side of the axle. Figure 4. The last five digits of the code is the machining date code. Figure 5.

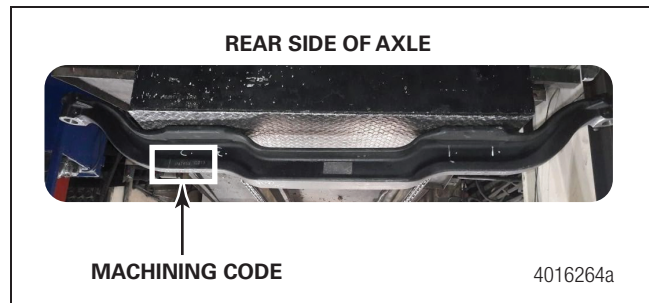


Figure 4

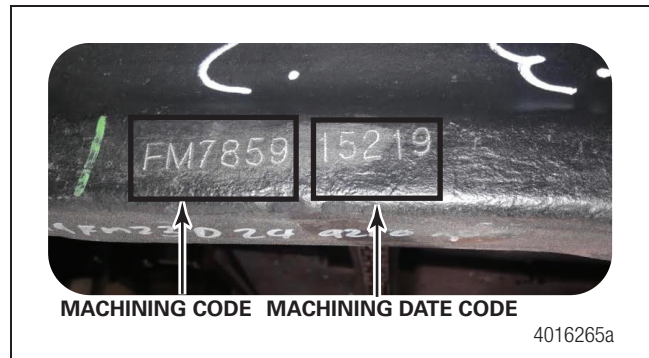


Figure 5

4. Check for the following criteria to determine if the axle is affected.
 - Forging Date Code = 14128
 - Heat Code = CA
 - Machining Date Code = 14214
 - Axle serial number is on the list of affected axles. Refer to the table in the back of this publication.
 - **If the axle meets ALL of this criteria:** The axle will need to be replaced according to the Replacement Procedures in this technical bulletin. Before you begin service, first contact the Meritor OnTrac™ Customer Call Center at 866-668-7221 or email the center at ontrac@meritor.com. Use the pre-call worksheet at the back of this technical bulletin to collect required information. OnTrac will create a case number and send you the kit required for service.
 - **If the axle does NOT meet ALL of this criteria:** Follow the OEM's program guidance to close out the program warranty claim. Note the heat code and axle serial number in the OEM claim comments. Return the vehicle to the owner.

Replacement Procedures


Removal

This procedure will require referencing OEM procedures for completion. Please acquire all needed references prior to starting the repair.

NOTE: Most of the hardware in this procedure will be reused. Make sure to perform procedures in a clean, orderly manner to make installation easier.

1. Wear safe eye protection. Park the vehicle on a level surface. Block the wheels to prevent the vehicle from moving. Support the vehicle with safety stands.
2. Remove both front tire and wheel assemblies.
3. Remove both front drums.
4. Remove both front hubs.
5. Disconnect the air line to the air chamber.
6. Disconnect the ABS sensor.
7. Remove both front brake assemblies.
8. Remove the cotter pin and nut from the steering arm end of the drag link.
9. Remove the drag link socket from the steering arm. Leave the socket intact on the drag link.
10. Support the I-beam. Remove the U-bolt nuts and washers. Remove the U-bolts.
11. Remove the I-beam. Keep the right and left caster shims and other suspension hardware apart so they can be reinstalled on the same side they were originally located.
12. Contact the Meritor OnTrac™ Customer Call Center at 866-668-7221 or email the center at ontrac@meritor.com. Inform OnTrac™ that the axle was removed and is ready for shipment back to Meritor. OnTrac™ will arrange for pickup.

Installation

1. Place the new I-beam into position, ensuring that the metal tag is located toward the front of the vehicle. Reinstall the existing suspension components and shims on the side they were originally installed. Refer to the OEM service instructions for correct assembly procedures and specifications.
2. Reinstall the drag link. Tighten the nut to the OEM specification. Secure the nut with a cotter pin.
3. Install both brake assemblies. Make sure they are oriented in the same position as the original. Tighten the fasteners to specification. 

4. Reconnect the ABS sensor cable.
5. Reconnect the air line to the air chamber.
6. Install the hubs.
 - A. Install the new wheel seal provided in the kit.
 - B. Measure and adjust the wheel end play. Refer to the OEM recommended instructions for adjusting the wheel end play and final nut torque specifications for the clamping pack used. Measure end play using a dial indicator to achieve the correct end play setting. Record final end play settings.
 - C. Install the new hub cap gaskets provided in the kit.
 - D. Fill the hubs with the OEM suggested lubricant. Check the lubricant level again prior to releasing the vehicle.
7. Install the drums.
8. Install the wheel and tire assemblies according to the OEM recommended instructions.
9. Adjust the brakes.
10. Grease the king pins and tie rod ends.
11. Remove the vehicle from the stands.
12. Perform an alignment.
13. Release the vehicle to the end user.
14. Complete the OEM program claim submittal.

Table C: Affected Axle Serial Numbers

MON01738566	MON01741324
MON01738617	MON01741325
MON01740421	MON01741326
MON01740422	MON01741327
MON01740423	MON01741328
MON01740424	MON01741329
MON01740425	MON01741330
MON01740426	MON01741332
MON01740427	MON01741332
MON01740941	MON01741333
MON01740942	MON01741334
MON01740943	MON01741335
MON01740944	MON01741336
MON01740946	MON01741337
MON01741318	MON01741338
MON01741319	MON01741339
MON01741320	MON01741341
MON01741321	MON01741342
MON01741322	MON01741343
MON01741323	MON01741344



Meritor Heavy Vehicle Systems, LLC
2135 West Maple Road
Troy, MI 48084 USA
866-OnTrac1 (668-7221)
meritor.com

Information contained in this publication was in effect at the time the publication was approved for printing and is subject to change without notice or liability. Meritor Heavy Vehicle Systems, LLC, reserves the right to revise the information presented or to discontinue the production of parts described at any time.

Copyright 2019
Meritor, Inc.
All Rights Reserved

Printed in USA

TP-2000
Issued 06-19
(16579)



Case # AM _____

Authorization # ARM _____

PRE-CALL WORKSHEET

***Meritor ID Number:** _____

*Vehicle Information

*17 Character VIN Number: _____ Vocation: _____

*Vehicle Make: _____ Vehicle Model: _____

*Owner/Fleet Name: _____ Unit #: _____

*In Service Date: _____ Vehicle Build Date: _____
MM/DD/YYYY MM/DD/YYYY

*Part/Component Information

*Meritor Component Model Number: _____

*Meritor Component Serial Number: _____

*Repair Facility Information

*Contact Persons Name: _____ *Phone: _____

Work Order Number: _____ Email Address: _____

*Failure Date: _____ *Odometer: _____ MI KM Hrs
MM/DD/YYYY

Warranty Coverage OEM Meritor

*Work Details/Customer Complaint

Service Part Only

Component Purchase Date: _____ Original Invoice Number: _____
MM/DD/YYYY

Mileage On Component: _____

Assistance: 1-866-OnTrac1 (1-866-668-7221) Fax: 1-248-435-5580 E-Mail: OnTrac@Meritor.com

*Required Field



Revised 4/19

Meritor Customer Call Center