

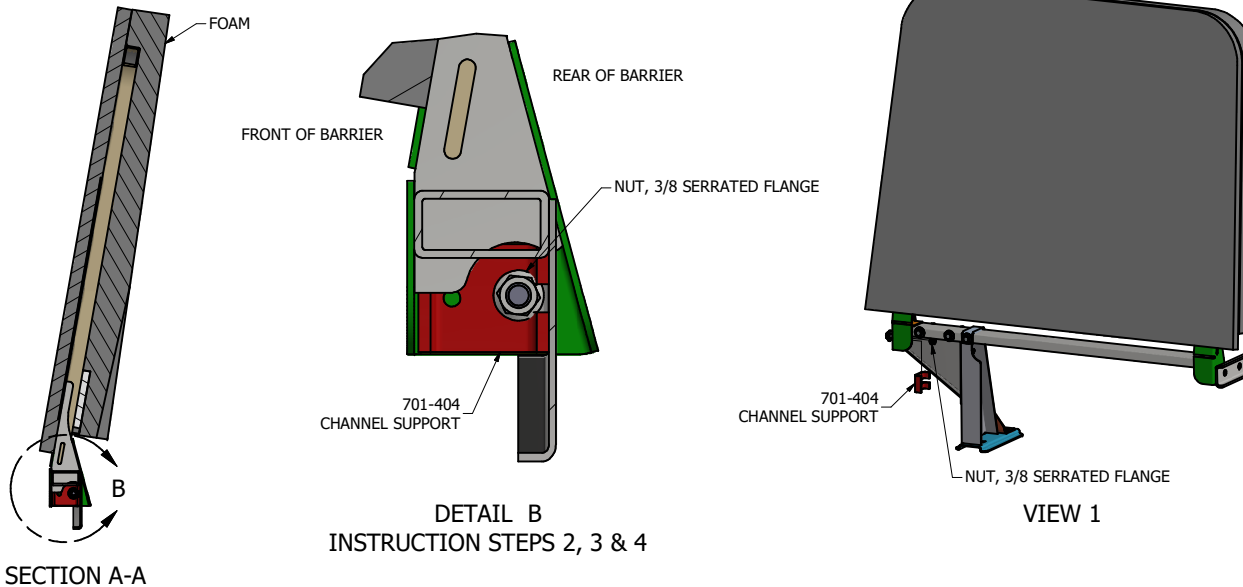
LEFT HAND/DRIVER SIDE (SHOWN)  
RIGHT HAND/PASSENGER SIDE (OPPOSITE)

**ITEMS NEEDED:**

1. 701-404, FIX PART. ONE PER BARRIER.
2. 9/16 WRENCHS OR SOCKETS

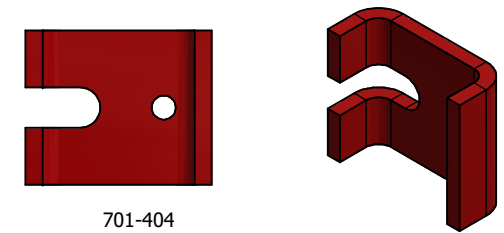
**INSTRUCTIONS:**

1. IDENTIFY 39" BARRIERS.
2. START ON BARRIER AISLE SIDE, REMOVE 3/8 NUT IDENTIFIED IN SECTION B & VIEW 1.
3. PLACE FIX CHANNEL PART 701-404 AS SHOWN IN SECTION B. PUSH OUT 3/8 BOLT & WASHER AS NEEDED. (REFERENCE VIEW 1 FOR EXPLODED VIEW.)
4. REINSTALL 3/8 NUT REMOVED TO ADD FIX PART. TORQUE 3/8" FASTENERS 10 - 35 FT. LBS.



DETAIL B  
INSTRUCTION STEPS 2, 3 & 4

VIEW 1



701-404  
CHANNEL, BARRIER SUPPORT  
(PART WILL BE BLACK E-COAT)

<p><b>HSM</b> Transportation Solutions</p>		<p>THIS DOCUMENT IS CONTROLLED ONLY WHEN VIEWED ONLINE THIS DRAWING AND THE CONTENTS ARE THE PROPERTY OF THE HSM SOLUTIONS COMPANY. ANY USE OR COPY OF THE DATA CONTAINED ON THIS DRAWING, PHYSICAL OR ELECTRONIC, WITHOUT THE EXPRESSED WRITTEN PERMISSION FROM THE HSM SOLUTIONS CO. IS PROHIBITED.</p>		<p>HSM Corporate 235 2nd Ave NW Hickory, NC 28601 hsmtransportations.com</p>								
PART NUMBER		DESCRIPTION										
INS-185		INS, BARRIER CHANNEL ADDITION FIELD FIX										
DRAWN BY	DATE	WEIGHT: 38.409lbs										
ANIMS	2/7/2019	SHEET SIZE: C										
CHECKED BY	DATE	SHEET 1 OF 1										
THIRD ANGLE		TOLERANCES UNLESS OTHERWISE SPECIFIED		REV: A								
		.X = ± .1		<table border="1"> <tr> <td>HOLE DIAMETER</td> <td>SOFT GOODS</td> </tr> <tr> <td>0-.500 + .010</td> <td>± .12</td> </tr> <tr> <td>.XXX = ± .005</td> <td>SEAT ASSEMBLIES</td> </tr> <tr> <td>.501+ + .012</td> <td>± .38</td> </tr> </table>	HOLE DIAMETER	SOFT GOODS	0-.500 + .010	± .12	.XXX = ± .005	SEAT ASSEMBLIES	.501+ + .012	± .38
		HOLE DIAMETER	SOFT GOODS									
		0-.500 + .010	± .12									
		.XXX = ± .005	SEAT ASSEMBLIES									
.501+ + .012	± .38											
.XX = ± .03		- .005										
.XXX = ± .005		.501+ + .012										
ANGLES ± 2°		- .006										

A	2/14/2019	NEW RELEASE	ALN	CM0801
REV	DATE	DESCRIPTION	FROM	ECN
^ REVISION HISTORY ^				

\\CEW-CAD\SVR\Engineering\CAD\Inventor\CAD Files\Drawings\INS\_Prod-Assy Aids\INS-185.idw