




May 2, 2019



****AUTO**ALL FOR AADC 400



Engines eligible for NHTSA Recall No. 19E020:

Engine Serial Number	Vehicle Model	Vehicle Identification Number
74094787	4300 4X2	3HAMMM 

Cummins Inc.
Box 3005
Columbus, IN 47202-3005 USA
Mail Code: 40911
Phone: 1 800 CUMMINS
cummins.com



***** IMPORTANT SAFETY RECALL *****
NHTSA Recall No. 19E020
Interim Recall Notice

May 2, 2019

Dear Cummins Customer:

This notice is sent to you in accordance with the requirements of the National Traffic and Motor Vehicle Safety Act.

Cummins Inc. has decided that a defect which relates to motor vehicle safety exists in certain B6.7 diesel engines that were manufactured between December 16, 2015 and February 25, 2019 and equipped with fuel module option FS90301 or FS90453.

This notice applies to your engine(s) listed on the enclosed Engine/Vehicle list.

Fuel module options FS90301 and FS90453 contain an electric fuel heater. Internal electrical arcing within the fuel heater may create sufficient heat inside the fuel heater to cause plastic in the fuel heater to melt and potentially catch fire. It may also cause an engine stall. A fire, if undetected and uncontained, presents an increased risk of personal injury. An unexpected engine stall may increase the risk of a crash. If this condition exists, melting of the fuel heater may be visible during a service event, smoke may precede or accompany a fire or the engine may become increasingly difficult to start.

Cummins is currently developing a permanent remedy for this issue. You will receive a second notification to inform you when the final remedy is available and to provide instructions to schedule the recall for your engine.

In the meantime, Cummins advises you to take the following actions to mitigate the safety risk:

- Locate the fuel filter module and fuel heater at the driver's side front of the engine as shown in Figure 1 below.
- Inspect the heater and module for any signs of damage or fuel leakage.
- If there is no damage or leakage after engine shutdown, remove the fuel heater fuse as shown in Figures 2 or 3 below (based on application) and leave the wiring harness connected.
- In the event there are signs of damage OR leakage, contact your local Cummins service location at the number below to have a heater plug kit installed. (Reference TSB190038)

Federal law requires vehicle lessors receiving this recall notice to forward a copy of this notice to the lessee within ten (10) days. Also, it is a violation of Federal law for a dealer to deliver a new vehicle or equipment covered by this recall notice under a sale or lease until the defect has been remedied.

If you have questions or concerns about this recall, please contact your local Cummins Distributor or authorized warranty dealer. You may also contact Cummins Care at 1-800-CUMMINS (1-800-286-6467), or visit our website at care.cummins.com.

If you have a complaint relative to this recall, you may report it to the following:

Administrator
National Highway Traffic Safety Administration
1200 New Jersey Avenue, SE
Washington, DC 20590

You may also call the toll-free Vehicle Safety Hotline at 1-888-327-4236 (TTY: 1-800-424-9153); or go to <http://www.safercar.gov>.

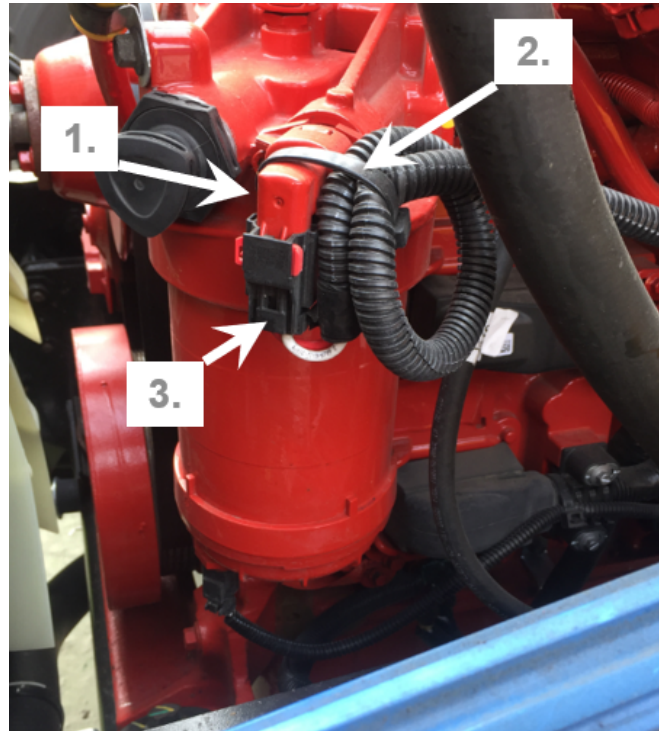
If you are no longer the owner of the engine or vehicle listed in the table below, please forward this notice to the new owner or provide the new owner's contact information to Cummins so that we can notify them of this recall.

Cummins is taking this action in the interest of safety and satisfaction with our products. We apologize for any inconvenience and thank you for your attention to this matter.

Sincerely,

Campaign Administrator
Cummins Inc.

Figure 1 - Location of Fuel Filter Module & Heating Element



1. Fuel Heater
2. Cable Tie
3. Electrical Connector

Figure 2. Navistar® CE Bus Fuse Removal Instructions

1. Locate red Maxi Fuse on dash panel. See Figure below.
2. Remove fuse cap and discard red Maxi Fuse. See Figure below.
3. Reinstall fuse cap. Do **not** replace fuse. See Figure below.
4. Retain fuse for reinstallation once final remedy is performed.

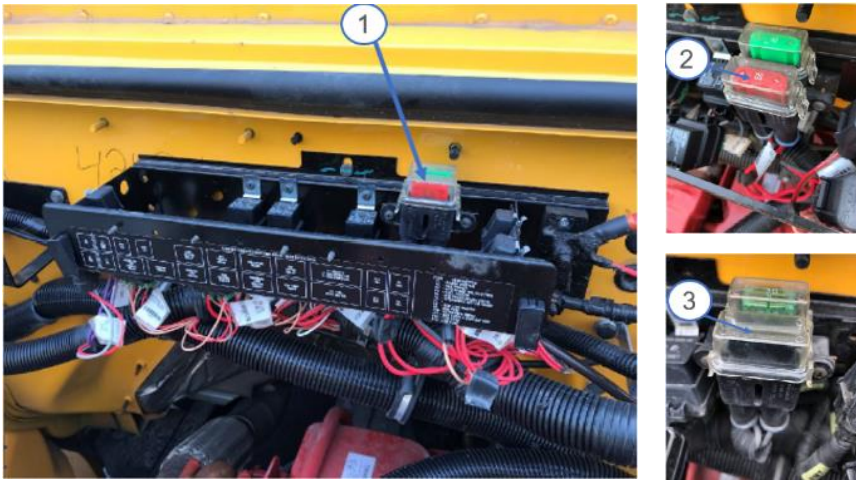
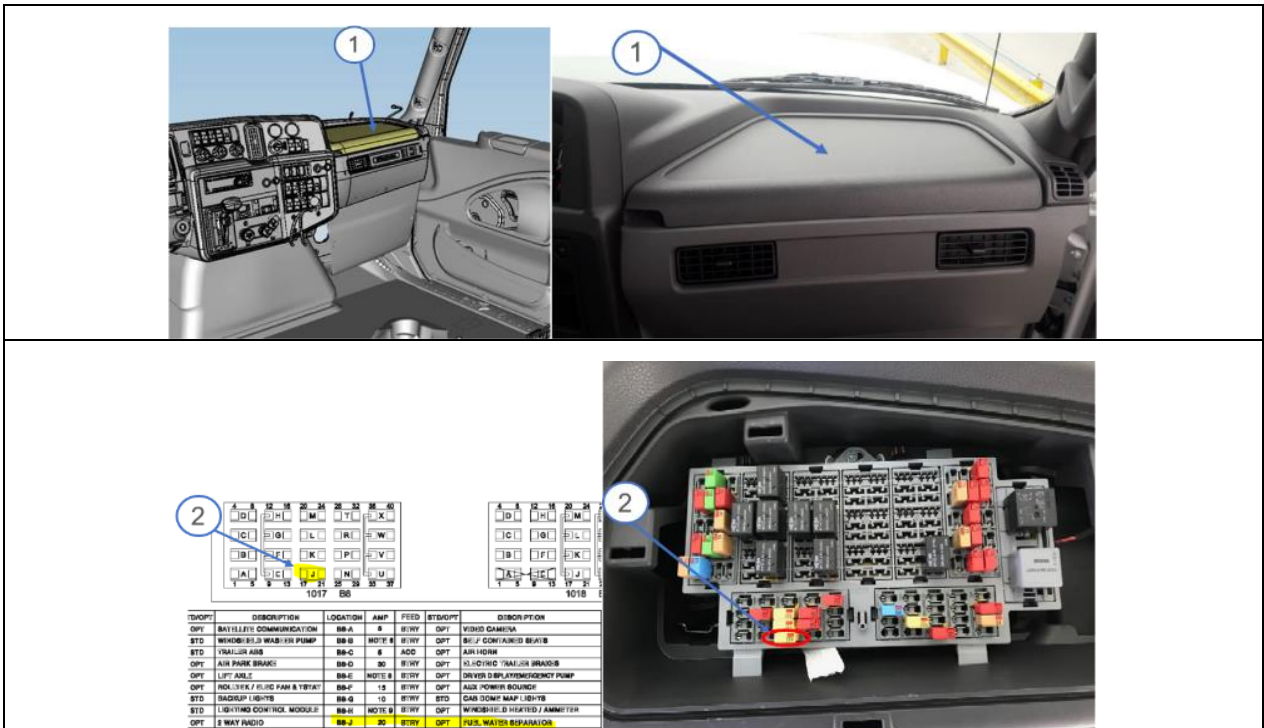


Figure 3. Navistar® MV/HV Fuse Removal Instructions

Remove fuse.

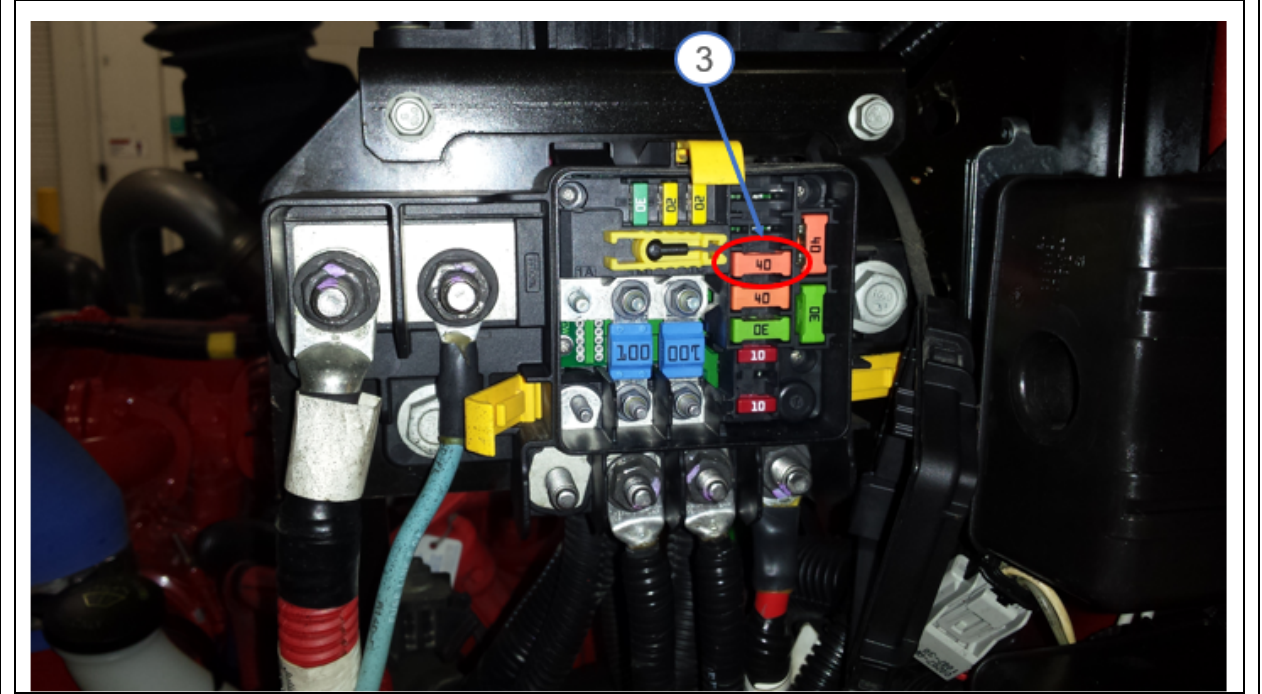
1. Remove cover of fuse box, located on passenger side dashboard as indicated in the photo below.
2. Remove 20 amp fuse located at B8-J cavity 17-21 as indicated in the photo below.
3. Remove 40 amp fuse located at 2C cavity as indicated in the photo below..
4. Retain fuses for reinstallation once final remedy is performed.



Location of 20A Fuse on Navistar® MV/HV.

DESCRIPTION	QTY	FUNCTION	LOCATION
CONNECTOR, BODY UNDERHOOD PDM	1	-	N/A
N/A	-	-	1A
FUSE, 100 AMP BOLT IN MIDJ	1	CAB FEED	1B
FUSE, 100 AMP BOLT IN MIDJ	1	CAB FEED	1C
N/A	-	-	2A
N/A	-	-	2B
FUSE, 40A, MAXI COMPACT, ORANGE	1	FUEL HEATER	2C
FUSE, 40A, MAXI COMPACT, ORANGE	1	HYD BRAKE	2D
FUSE, 30A, MAXI COMPACT, GREEN	1	ECM	2E
FUSE, 20 AMP MINI - YELLOW	1	DISCONNECT SWITCH	3A
FUSE, 30 AMP MINI - GREEN	1	LINE AFT HEATERS	3B
FUSE, 20 AMP MINI - YELLOW	1	IGN AFT RELAY	3C
FUSE, 10 AMP MINI - RED	1	ALLISON TCM	3D
N/A	-	-	3E
FUSE, 10 AMP MINI - RED	1	DEF PUMP	3F
FUSE, 40A, MAXI COMPACT, ORANGE	1	SPARE	SPARE 1
FUSE, 30A, MAXI COMPACT, GREEN	1	SPARE	SPARE 2
NUT, HEX M5 X .8 ZNI	6	MISC	N/A

CAUTION
Replace fuses with same AMP rating. See Operator's Manual.



Location of 40A Fuse on Navistar® MV/HV