



Above. Beyond. Always.

IMPORTANT SAFETY RECALL NOTICE

NHTSA RECALL ID: 19E-047

MORryde RSPB77-1622, RSPB83-1622, RTPB77-1622-03, RTPB77-1622-05, & RTPB83-1622-03
Rubber and Non-rubber Rotating Pin Boxes

Dear MORryde Rotating Pin Box Owner:

This notice is sent to you in accordance with the requirements of the National Traffic and Motor Vehicle Safety Act.

MORryde has decided a potential safety concern exists with the rotating pin boxes listed above for vehicles manufactured between 3/16/18 and 7/15/19. It has been determined that rotating pin boxes in this recall population may have been manufactured with improper length bolts that hold the wedge to the pin box.

REASON FOR RECALL: The 2 (You Turn Rotating Pin Box) or 3 (Orbital Rubber Rotating Pin Box) bolts that are used to hold the wedge to the rotating pin box may be too long or too short. If the rotating pin box is unlocked and allowed to rotate and the wedge is installed with improper length bolts, the wedge may become disconnected from the pin box. This would allow the rotating pin box to pivot in two places which could allow the trailer to come in contact with the truck, increasing the risk of a crash.

REMEDY FOR RECALL: The bolt will be inspected and replaced if necessary, at no cost to the owner. The remedy will take 15 minutes.

If after having attempted to take advantage of this recall you believe you have not been able to have your defective part remedied without charge and within a reasonable amount of time, you may submit a complaint to the Administrator, National Highway Traffic Safety Administration, 1200 New Jersey Ave., S.E., Washington, D.C. 20590 or call the toll-free vehicle safety hotline at 1-888-327-4236 (TTY: 1-800-424-9153); or go to <http://www.safercar.gov>.

We apologize for any inconvenience this safety recall may cause, but your safety is our first concern.



Above. Beyond. Always.

574.293.1581 • www.MORryde.com

IMPORTANT SAFETY RECALL NOTICE

RECALL INSTRUCTIONS

TOOLS REQUIRED:

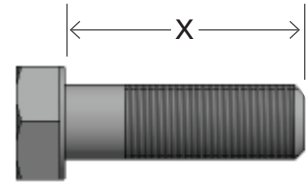
- 15/16" Socket
- Breaker Bar
- 250 ft-lb Torque wrench
- Tape measure or ruler

OPTIONAL:

- Impact gun
- Ratchet

TIME ALLOWED:

15 minutes



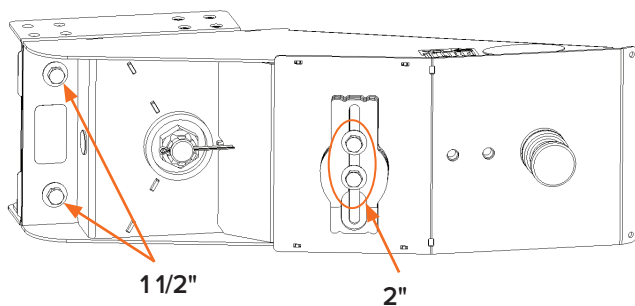
NOTE:

Hex head bolts are measured from below the head as shown above and usually measure approximately 1/16" shorter than the specified measurement.

NOTE: The following steps are intended to be performed on one bolt at a time so that if the wedge is installed in the rotation position, it can maintain that position without having to follow the wedge installation instructions in the owner's manual.

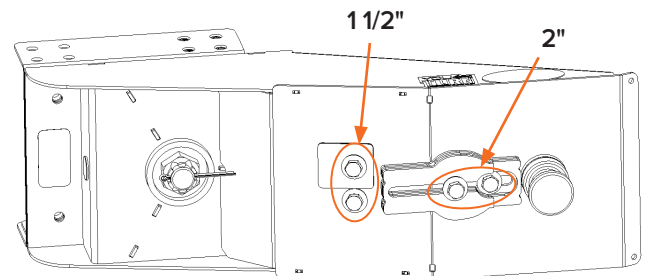
STEP 1

Using the breaker bar and 15/16" socket, loosen one of the bolts that hold the wedge in place.* Remove the bolt and verify that it is the proper length. The You Turn Rotating Pin Box uses (2) 2" long bolts and the Orbital Rotating Rubber Pin Box uses (2) 2" and (1) 1-1/4" long bolts when the wedge is in the storage position or a combination of 2 of these bolts when the wedge is installed for rotation.

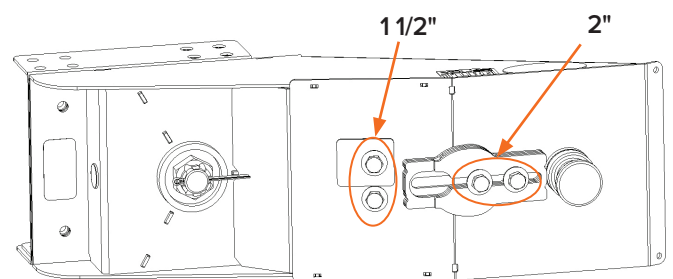


The wedge stored in the You Turn Rotation Pin Box.

***NOTE:** This recall only pertains to customers who are using the standard wedge that came with the rotating pin box or have it in the storage position. There is a separate recall if a different wedge kit has been installed.



The wedge in use in the You Turn Rotating Pin Box.



The wedge in use in the alternate orientation of the You Turn Rotating Pin Box.

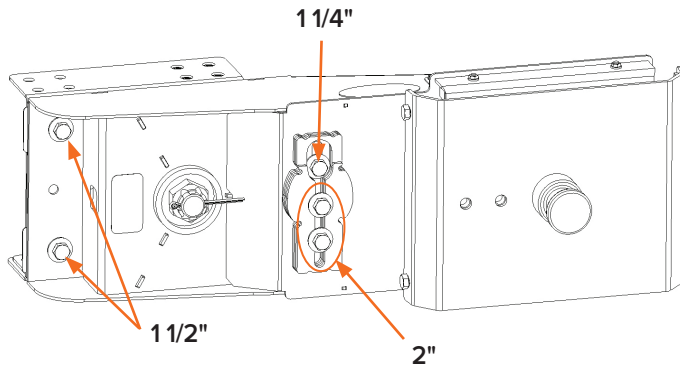


Above. Beyond. Always.

IMPORTANT SAFETY RECALL NOTICE

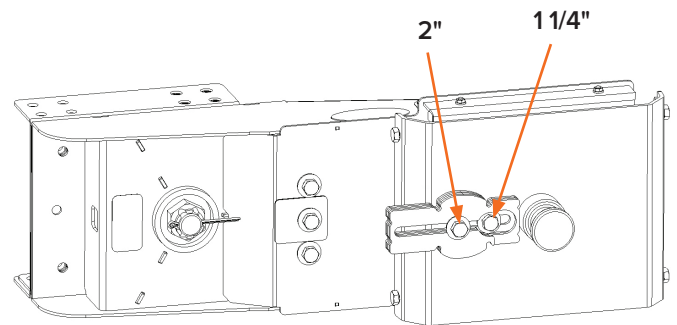
RECALL INSTRUCTIONS

STEP 1 CONT.

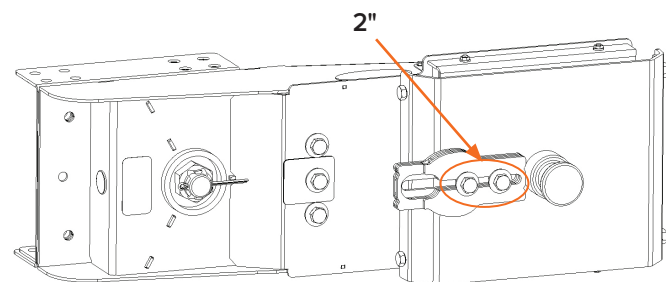


The wedge stored in the Orbital Rotating Rubber Pin Box with 3 bolts installed.

The wedge in use in the alternate orientation of the Orbital Rotating Rubber Pin Box with 2 bolts installed. The 3rd bolt is in the storage location and needs to be checked as well. Do not confuse it with the lockout bolts in the storage location which are 1-1/2" long.



The wedge in use in the Orbital Rotating Rubber Pin Box with 2 bolts installed. The 3rd bolt is in the storage location and needs to be checked as well. Do not confuse it with the lockout bolts in the storage location which are 1-1/2" long.



STEP 2a

If the bolt that was removed in Step 1 was correct, reinstall the bolt and torque to 200 ft-lbs. Continue to Step 3.

STEP 2b

If the bolt that was removed in Step 1 was incorrect, contact MORryde to replace it with the correct bolt. Before moving the unit, refer to the Lockout Procedure* located after Step 3. The 2" bolt is UO115-824 and the 1-1/4" bolt is UO115-798. Reinstall the bolt and torque to 200 ft-lbs.

STEP 3

Repeat Steps 1 & 2 for the remaining bolt for the You Turn Rotating Pin Box or for both remaining bolts for the Orbital Rotating Rubber Pin Box.

* LOCKOUT PROCEDURE:

If a bolt is removed and determined the length is improper, the following repair instructions need to take place. If the unit needs to be moved prior to receiving and completing the repair instructions, complete the lockout procedure before moving the unit.

THIS COMPLETES THE RECALL.



Above. Beyond. Always.

574.293.1581 • www.MORryde.com

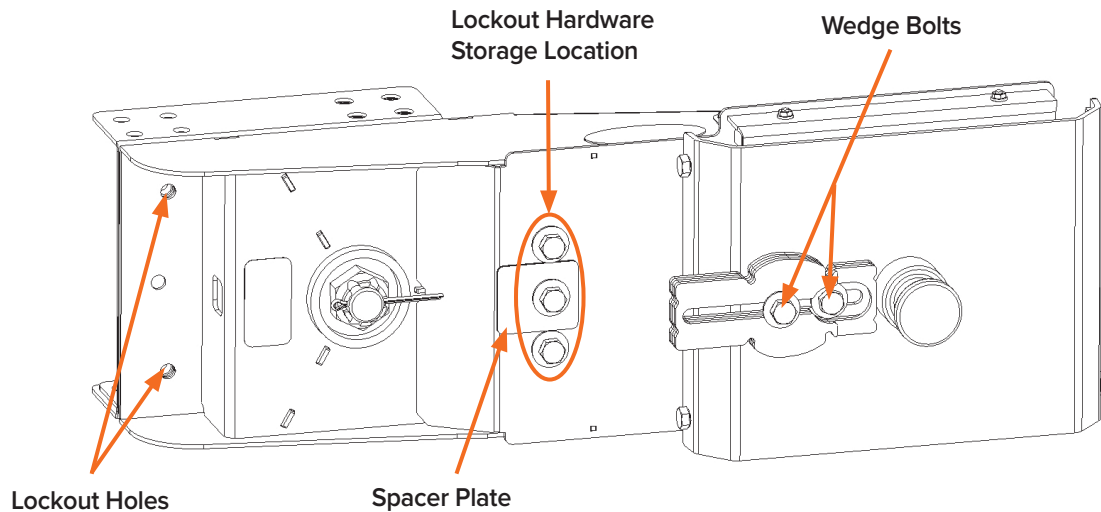
IMPORTANT SAFETY RECALL NOTICE

LOCKOUT PROCEDURE

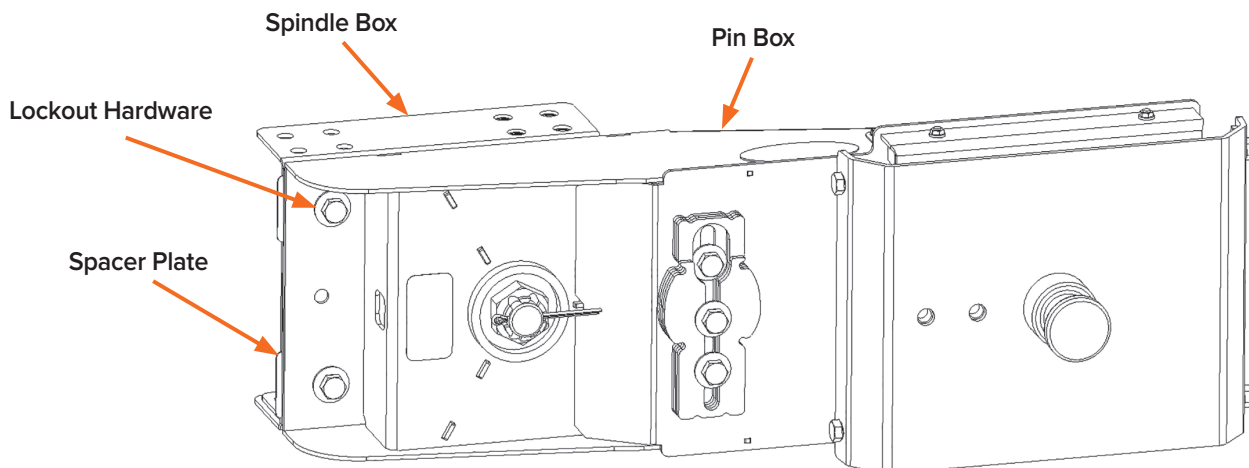
TOOLS REQUIRED: • 15/16" Socket • Breaker Bar • Torque wrench capable of 200ft-lbs

TIME ALLOWED: 30 minutes

Use the socket and breaker bar to loosen the wedge bolts and the bolts that are in the lockout hardware storage location, removing them and the spacer plates.



Place the spacer plates between the spindle box and pin box so that the hole lines up with the lockout holes. Use the two 5/8-18 x 1.5" bolts removed from the storage location with the conical lock washers and hand thread them into the lockout holes. Use the remaining bolts and conical lock washers and hand thread them into the storage location to store the wedge. Set the torque wrench to 200ft-lbs and torque all 5 bolts.



Above. Beyond. Always.

574.293.1581 • www.MORryde.com