



***** IMPORTANT SAFETY RECALL *****
NHTSA Recall No. 19E-074
Cummins Campaign #C2253

***** SECOND NOTICE *****

July 24, 2020



***AUTO**ALL FOR AADC 400



Dear Cummins Parts Distributor:

This notice is sent to you in accordance with the requirements of the National Traffic and Motor Vehicle Safety Act. Cummins Inc. has determined that a defect which relates to motor vehicle safety exists in certain remanufactured Electronic Control Modules (ECMs), part number 3684275RX, with serial numbers having a prefix of A or B. Cummins is recalling these products. This recall also affects remanufactured ISX engines having part numbers DR6437-RX, DR6439-RX, DR6932-RX, DR6980-RX and DR6986-RX that have these ECMs installed. Our records indicate the some of the suspect ECMs and/or engines may have been shipped to you.

Because many of the subject ECMs have not yet been returned to Cummins, we are sending this follow-up notice to urge you to (1) identify and return any ECMs that remain in your inventory and (2) notify customers to whom you have sold affected product. Instructions for these actions are below. If you would like our assistance to notify owners, please let us know.

WHY IS A RECALL BEING CONDUCTED?

An internal component within the remanufactured ECM may have cracked solder joints that mount the component to the circuit board, which may result in an engine stall. An engine stall without warning and without the ability to restart may increase the risk of a crash.

WHAT SHOULD YOU DO?

1. Recalled Products in Inventory.

Check the serial number of any remanufactured ECMs Part Number 3684275RX in your inventory to identify any ECMs having a serial number with a prefix of A or B. See Figure 1 to locate the serial number. To assist you in identifying these ECM's, those having a serial number with a prefix of A or B have a "W-Bend". ECMs having a serial number with a prefix of C have a "U-Bend". See Figure 2 below to distinguish between the two.

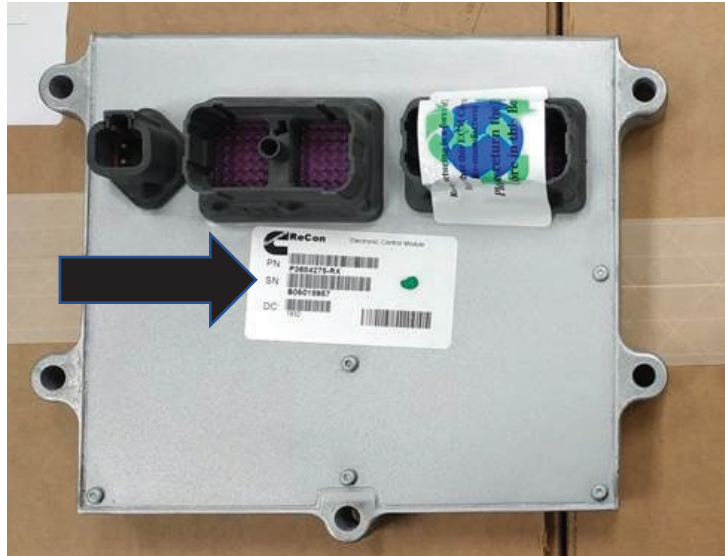


Figure 1 - Location of ECM Serial Number

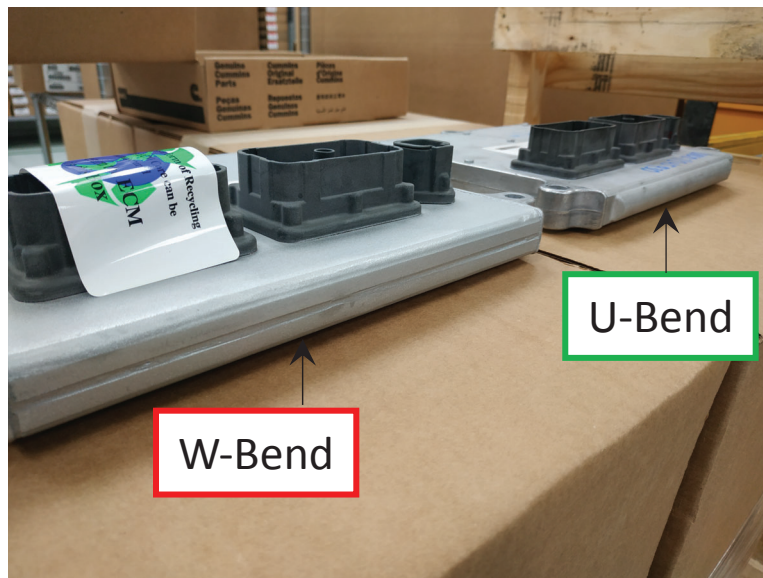


Figure 2 - W-Bend vs U-Bend Configuration

If you find any ECMs having a serial number with a prefix of A or B, follow the Return Goods Process under CSCO-Alert-2019-0030.

Also check any of the remanufactured engines in your inventory having the part numbers identified above to identify if any of them contain any ECMs having a serial number with a prefix of A or B. See Figure 3 for the location of the ECM on the engine and Figure 4 for the location of the ECM serial number.



Figure 3 – Location of ECM on Engine

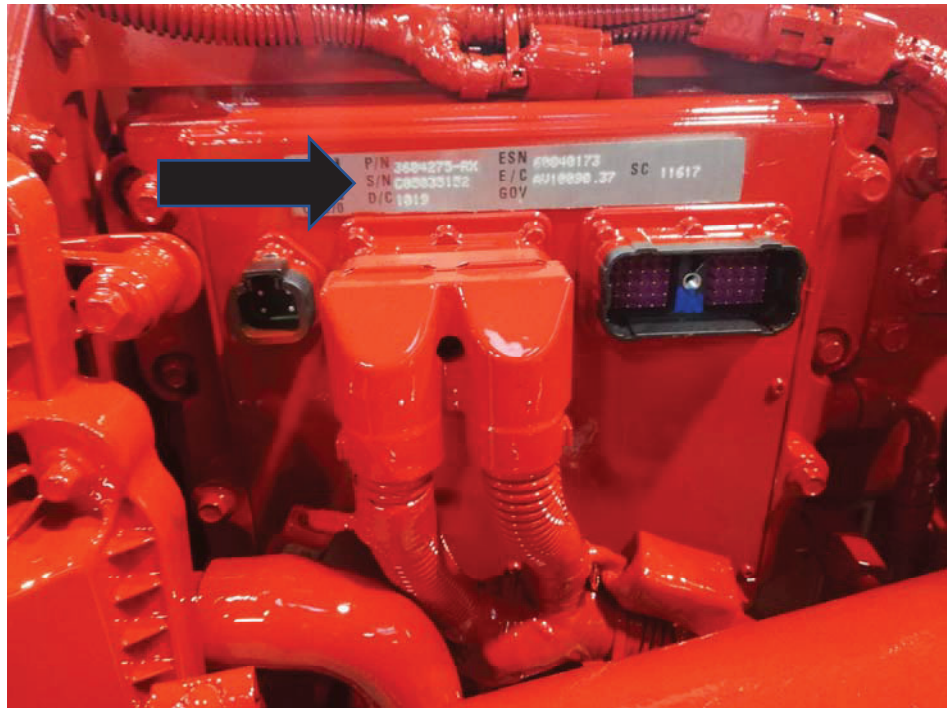


Figure 4 – Location of the ECM serial number on the remanufactured engines.

If you find any ECMs having a serial number with a prefix of A or B on the Recon Engines, follow the instructions in Safety Campaign #C2253 "ISX CM871 Engine Control Module Safety Campaign".

NOTE: It is a violation of United States Federal law to sell these recalled ECMs or engines equipped with these ECMs.

2. Recalled product in the hands of your customers and owners. It is critical that downstream resellers and end users be advised of this recall. Accordingly, please take the following action:

Reselling Customers within the United States: You must forward copies of this letter within five (5) business days to any of your reselling customers who may have purchased the recalled products from you.

Reselling Customers outside the United States: You must forward copies of this letter to any of your reselling customers who may have purchased the recalled products from you.

End Users: Within five (5) business days, please check your records to identify any end-user purchasers of the recalled products and provide their contact information to Cummins at cummins.campaign.administration@cummins.com so that we can notify them of this recall and provide instructions. Alternatively, at your request, we will provide a recall letter that you may send to your customers.

QUESTIONS OR CONCERNS?

If you have questions or concerns about this recall, contact Cummins Care at 1-800-CUMMINS (1-800-286-6467).

* * *

Cummins is taking this action in the interest of your personal safety and satisfaction with our products. We apologize for any inconvenience and thank you for your attention to this matter.

Sincerely,

Campaign Administrator
Cummins Inc.