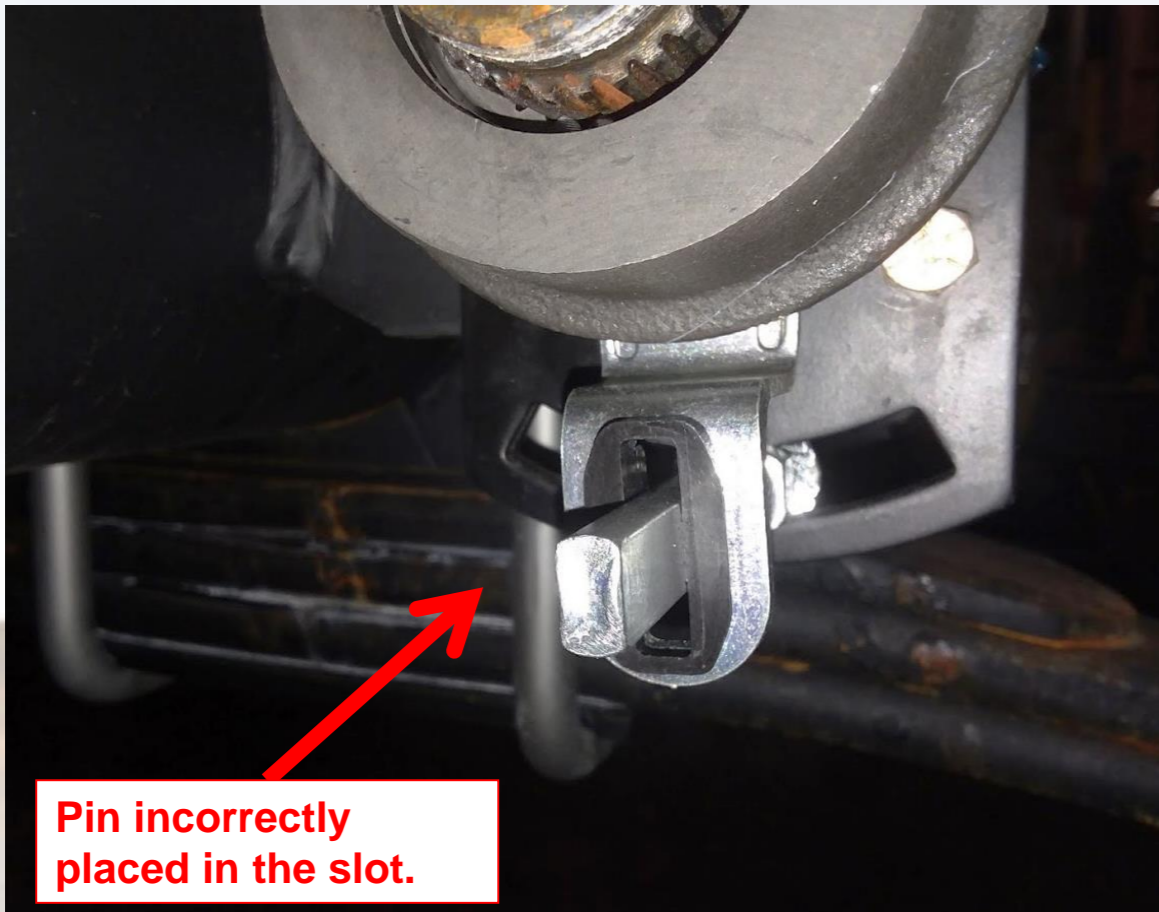




WHAT TO CHECK: Pin is installed, is in the correct position and nut is torqued.

HOW TO CHECK: Visually inspect that pin is installed through the slot in the brake adjuster arm and positioned at the end of the slot closest to the axle.

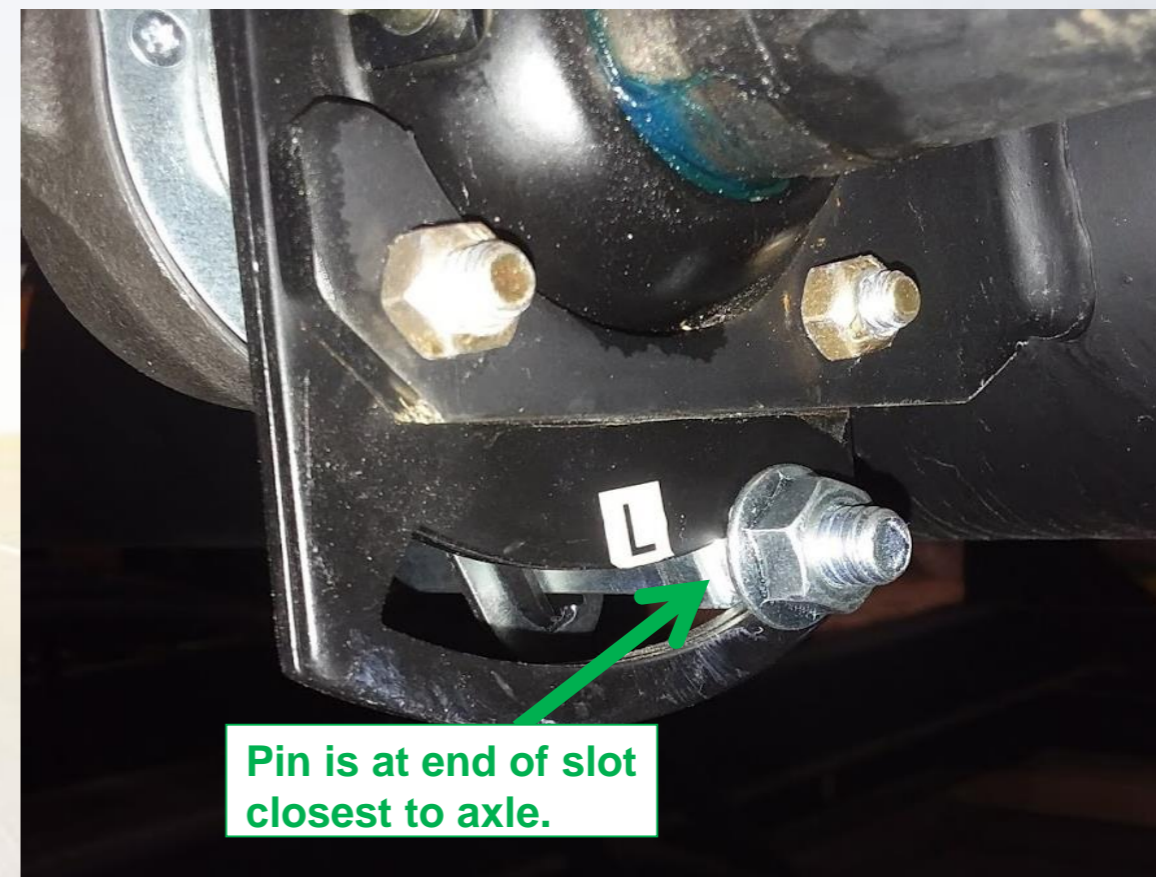
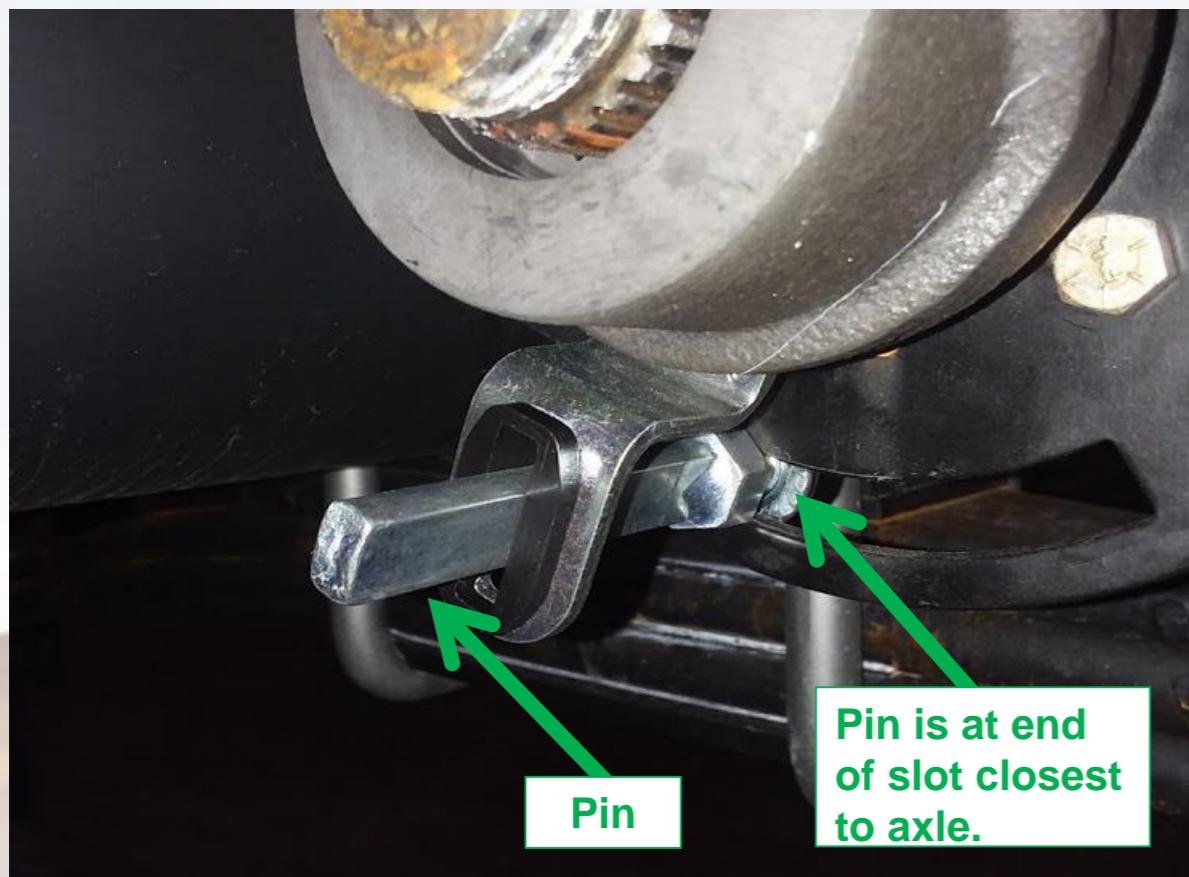
Use torque wrench to verify torque is 40 to 50 ft lbs.



**UNACCEPTABLE**



WHAT TO CHECK: Pin is installed, is in the correct position and nut is torqued.  
HOW TO CHECK: Visually inspect that pin is installed through the slot in the brake adjuster arm and positioned at the end of the slot closest to the axle.  
Use torque wrench to verify torque is 40 to 50 ft lbs.



**ACCEPTABLE**