

RC-18-78-01

MODEL: 2018 Model Year (MY18) Karma Revero

DATE: July 2018

TITLE: Exterior Rearview Mirror Inspection

PRIORITY: Revero vehicles in attached list**APPLICABILITY:** 2018 Model Year Karma Revero**MARKET REGIONS:** United States and Canada

PURPOSE: This document highlights the procedure to inspect and replace if needed the non-U.S./Canada markets Exterior Rearview Mirrors installed on the affected vehicles shown in the list below. The remedy available, if required, is to replace the exterior rearview mirror glass case sub-assembly, for one or both sides. This document supersedes all previous documents in workshop manuals, wiring diagrams, training documents, parts catalog, labor operations, etc.

While the method of repair is approved as indicated, performing and verifying that the repair is proper and does not create further damage to the vehicle is the responsibility of the technician at the dealer.

Safety Recall Notice (Remedy)

2017-2018 Model Year Karma Revero - LH and RH Exterior Glass Case Sub-Assembly Important Information Enclosed

IMPORTANT REMINDER ON VEHICLES AFFECTED BY SAFETY & COMPLIANCE RECALLS

New Vehicles in Dealer Inventory: It is a violation of Federal law for a dealer to deliver a new motor vehicle or any new or used item of motor vehicle equipment (including a tire) covered by this notification under a sale or lease until the defect or noncompliance is remedied. By law, dealers must correct, prior to delivery for sale or lease, any vehicle that fails to comply with an applicable Federal Motor Vehicle Safety Standard or that contains a defect relating to motor vehicle safety.

Pre-Owned Vehicles in Dealer Inventory: Dealers should not deliver any pre-owned vehicles in their inventory which are involved in a safety or compliance recall until the defect has been remedied.

The inspection process is recreated in this bulletin for the exterior rearview mirror, Left-hand Side and Right-hand Side Glass Case Sub-Assemblies or "Exterior Rearview Mirror Glass". The service manual for the Karma Revero can be referenced as a guide. This section is found beginning on page 422 of the Service Manual PDF, Mirror Assembly Section for removal if necessary. Rearview Mirror Glass removal and replacement will be highlighted in this bulletin.

Karma Automotive Bulletins and service documents are intended for use by experienced and trained Technicians. If you lack the skills, tools, equipment and a suitable workshop for any procedure described in this document, we suggest you leave such repairs to an Authorized Karma Service Provider or qualified service center. See your service provider for advice on whether your vehicle may benefit from the information contained within this document. The information contained in the Karma Bulletin is accurate at the date of publication. However, Karma Automotive regularly updates technical information. Please check with your Karma Automotive Service Provider that the bulletin you intend to use contains the latest available information.

RC-18-78-01

MODEL: 2018 Model Year (MY18) Karma Revero

DATE: July 2018

TITLE: Exterior Rearview Mirror Inspection

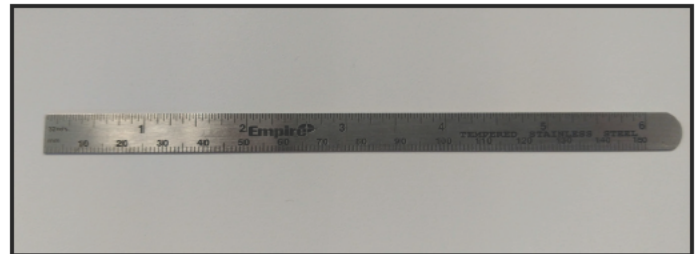
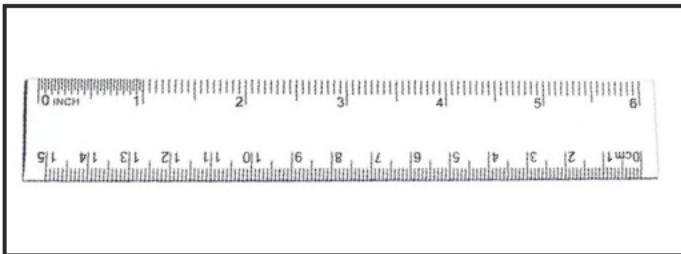
Have a camera available and ready. Capture images of the Exterior Rearview Mirror Glass installed and inspected as directed. These images (must be clear and readable) showing both (LH side and RH side) Exterior Rearview Mirror Glass as installed prior to inspection must be attached to the recall warranty claim, the TSS case and retained with repair order documentation as well. If replacement of both or either Exterior Rearview Mirror Glass is required, capture image of the new installed part to attach to the warranty claim and TSS case. This is needed for the NHTSA and Transport Canada recall records.

TOOLS REQUIRED:

ALL removal of components and installation should be with hand tools.



Panel tool or plastic 'bone' tool



One (1) straight edged ruler -15cm or 6 inches
(two types shown) PLASTIC is recommended to prevent any possible damage or scratching.



Camera or image capturing device such as a camera equipped mobile phone

Karma Automotive Bulletins and service documents are intended for use by experienced and trained Technicians. If you lack the skills, tools, equipment and a suitable workshop for any procedure described in this document, we suggest you leave such repairs to an Authorized Karma Service Provider or qualified service center. See your service provider for advice on whether your vehicle may benefit from the information contained within this document. The information contained in the Karma Bulletin is accurate at the date of publication. However, Karma Automotive regularly updates technical information. Please check with your Karma Automotive Service Provider that the bulletin you intend to use contains the latest available information.

RC-18-78-01

MODEL: 2018 Model Year (MY18) Karma Revero

DATE: July 2018

TITLE: Exterior Rearview Mirror Inspection

This procedure is to inspect and replace if the exterior rearview mirrors on the driver's sides of the affected vehicles are confirmed to be non-U.S.A/Canada market Exterior Rearview Mirrors (convex mirrors). The driver's side exterior rearview mirrors for the U.S.A/Canada markets must be flat mirrors per U.S.A and Canada safety motor vehicles regulations. The passenger's side rearview mirrors must be convex (non-flat mirrors) and must have the following phrase "**Objects in Mirror Are Closer Than They Appear**" readable on the glass surface. The phrase is a safety warning that is required to be engraved on the passenger side mirrors of motor vehicles in the U.S.A, and Canada.

Over View:

- 1) Using a straight edge as described, inspect the left-hand side Exterior Mirror Glass and verify the flat surface of the mirror. Capture an image of this finding.
- 2) Inspect the right-hand side Exterior Rearview Mirror Glass, this should display the appropriate text as described "**Objects in Mirror Are Closer Than They Appear**". Capture an image of this finding.
- 3) If no fault/defect is found, complete the TSS case and file the warranty claim for the inspection accordingly.
- 4) If either Exterior Rearview Mirror Glass are found to be out of specification, remove the Glass Case Sub-Assembly, replace the part(s) with the correct specified replacement(s) Exterior Rearview Mirror Glass as supplied by Karma Automotive LLC.
- 5) Apply the supplied Campaign Completion Label (C149950001100) to the shock tower area as indicated in this bulletin.
- 6) Complete the TSS case and file the warranty claim for the inspection.

RC-18-78-01

MODEL: 2018 Model Year (MY18) Karma Revero

DATE: July 2018

TITLE: Exterior Rearview Mirror Inspection

Begin with the left-hand side (driver's side) Exterior Rearview Mirror Glass. Using a straight edge as described, inspect the left-hand side Exterior Rearview Mirror Glass and verify the flat surface.

Capture an image of this finding.

A flat surface is correct as shown (fig. 1a and 1b). If no fault is found, complete the TSS case and file the warranty claim for the inspection.



fig. 1a

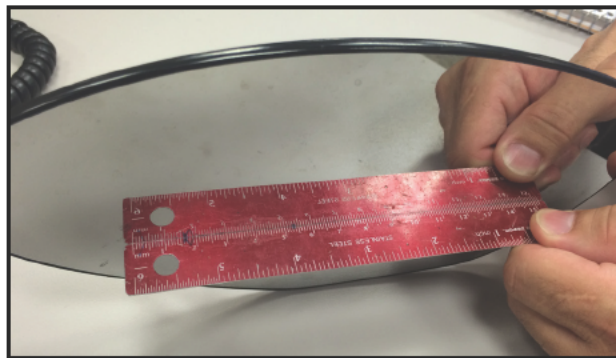


fig. 1b

The Correct flat Exterior Rearview Mirror Glass,
part number C131166001500 - LH Glass Case Sub-Assembly (fig. 1b).

Karma Automotive Bulletins and service documents are intended for use by experienced and trained Technicians. If you lack the skills, tools, equipment and a suitable workshop for any procedure described in this document, we suggest you leave such repairs to an Authorized Karma Service Provider or qualified service center. See your service provider for advice on whether your vehicle may benefit from the information contained within this document. The information contained in the Karma Bulletin is accurate at the date of publication. However, Karma Automotive regularly updates technical information. Please check with your Karma Automotive Service Provider that the bulletin you intend to use contains the latest available information.

RC-18-78-01

MODEL: 2018 Model Year (MY18) Karma Revero

DATE: July 2018

TITLE: Exterior Rearview Mirror Inspection

If the Left-hand side Exterior Rearview Mirror Glass is found to be a convex mirror, notice the straight edge ruler reflection has distortion (fig.2).

Replace this driver's side Exterior Rear View Mirror Glass with the correct Flat Exterior Rearview Mirror Glass, part number C131166001500- LH Glass Case Sub-Assembly as shown above (fig. 1b).



fig.2a

Again: a convex mirror surface is incorrect for the U.S.A and Canada markets - notice the image distortion and requires replacement. Replace this with C131166001500 - LH Glass Case Sub-Assembly.

The incorrect (convex) Exterior Rearview Mirror Glass should be removed by “snapping” it off and the new correct Exterior Rearview Mirror Glass needs to will be snapped into place.

Karma Automotive Bulletins and service documents are intended for use by experienced and trained Technicians. If you lack the skills, tools, equipment and a suitable workshop for any procedure described in this document, we suggest you leave such repairs to an Authorized Karma Service Provider or qualified service center. See your service provider for advice on whether your vehicle may benefit from the information contained within this document. The information contained in the Karma Bulletin is accurate at the date of publication. However, Karma Automotive regularly updates technical information. Please check with your Karma Automotive Service Provider that the bulletin you intend to use contains the latest available information.

TITLE: Exterior Rearview Mirror Inspection

To remove the Exterior Rearview Mirror Glass, grab the underside of the assembly. This may be made easier by using a plastic “bone” tool to bring the lower edge out (fig.3a).

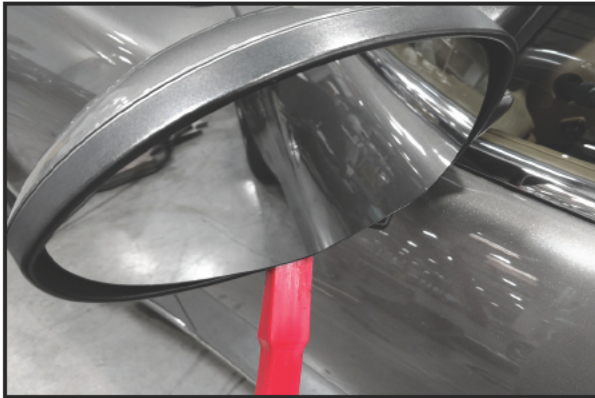


fig. 3a

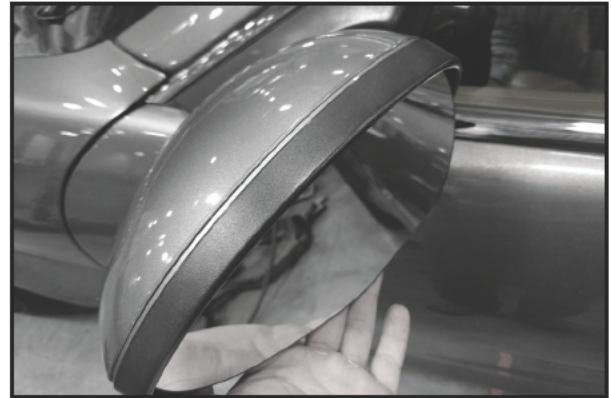


fig. 3b

From the underside pull upwards, a snap should be heard (fig. 3b).

The Exterior Rearview Mirror Glass should be loose and it can be pulled forward (fig. 3c).

Disconnect the electric connectors from the back side (fig. 3d).

Install is the reverse of removal, line up the mirror tabs to the slots and push in firmly.

Test the mirror function after reassembly, this includes the adjustment function in all four (4) directions to ensure proper installation and operation.



fig. 3c



fig. 3d

Karma Automotive Bulletins and service documents are intended for use by experienced and trained Technicians. If you lack the skills, tools, equipment and a suitable workshop for any procedure described in this document, we suggest you leave such repairs to an Authorized Karma Service Provider or qualified service center. See your service provider for advice on whether your vehicle may benefit from the information contained within this document. The information contained in the Karma Bulletin is accurate at the date of publication. However, Karma Automotive regularly updates technical information. Please check with your Karma Automotive Service Provider that the bulletin you intend to use contains the latest available information.

TITLE: Exterior Rearview Mirror Inspection

Right-hand Side Inspection

Inspect the right-hand side Exterior Rearview Mirror Glass, this should display the appropriate text as “**Objects in Mirror Are Closer Than They Appear**” (fig.4). Capture an image of this finding for warranty and the TSS case.

If no fault/defect is found, complete the TSS case and file the warranty claim for the inspection.



fig.4

If this is found to be incorrect, replace with C131166001600- RH Glass Case Sub-Assembly. This is done in the same manner as the left-hand side Exterior Rearview Mirror Glass, by snapping it out, and snapping the correct part in place. Removal and replacement if necessary is the same procedure as the left-hand side.

Karma Automotive Bulletins and service documents are intended for use by experienced and trained Technicians. If you lack the skills, tools, equipment and a suitable workshop for any procedure described in this document, we suggest you leave such repairs to an Authorized Karma Service Provider or qualified service center. See your service provider for advice on whether your vehicle may benefit from the information contained within this document. The information contained in the Karma Bulletin is accurate at the date of publication. However, Karma Automotive regularly updates technical information. Please check with your Karma Automotive Service Provider that the bulletin you intend to use contains the latest available information.

RC-18-78-01

MODEL: 2018 Model Year (MY18) Karma Revero

DATE: July 2018

TITLE: Exterior Rearview Mirror Inspection

KARMA AUTOMOTIVE, LLC	
Campaign No.:	_____
Description:	_____
Retailer Code:	_____
Repair Date:	___/___/___
For questions, please contact Client Services at 1-855-565-2762	
C149950001100	

fig.5a

Please apply label (fig.5a) to the location indicated on the passenger side shock tower (fig.5b). This will indicate the recall has been performed and is required to ensure compliance with the Exterior Rearview Mirror Glass Inspection Safety Recall Campaign.



fig.5b

Please retain photographs/images of the Exterior Rearview Mirror Glass as installed. This is critical for repair documentation as well, the mirror glass (whether incorrect or correct) should be clearly visible and text should be readable in the images. As mentioned previously, images must also be attached to the recall warranty claim, the TSS case and retained with repair order documentation as well.

Karma Automotive Bulletins and service documents are intended for use by experienced and trained Technicians. If you lack the skills, tools, equipment and a suitable workshop for any procedure described in this document, we suggest you leave such repairs to an Authorized Karma Service Provider or qualified service center. See your service provider for advice on whether your vehicle may benefit from the information contained within this document. The information contained in the Karma Bulletin is accurate at the date of publication. However, Karma Automotive regularly updates technical information. Please check with your Karma Automotive Service Provider that the bulletin you intend to use contains the latest available information.

RC-18-78-01

MODEL: 2018 Model Year (MY18) Karma Revero

DATE: July 2018

TITLE: Exterior Rearview Mirror Inspection

PARTS IF REQUIRED:

PART NUMBER	DESCRIPTION	QTY
C131166001500	LH Glass Case Sub-Assembly	1
C131166001600	RH Glass Case Sub-Assembly	1

SHOP SUPPLIES:

DESCRIPTION
N/A

SPECIAL TOOLS and PARTS:

PART NUMBER	DESCRIPTION	QTY
N/A		

LABOR CODES:

Required Code	DESCRIPTION	TIME
RC-00-00-04	Exterior Mirror Glass Inspection	0.5
Optional Labor Code		
RC-00-00-05	LH Mirror Glass Replacement	0.1
RC-00-00-06	RH Mirror Glass Replacement	0.1

CAUSAL PART:

PART NUMBER	DESCRIPTION	DEFECT CODE
C131166002107CC	Mirror Assembly LH - Domestic FMVSS	78-40-05-17

WARRANTY DISPOSITION:

The claim cannot be processed without full compliance of this bulletin. Ensure the following have been performed:

- The new units have been installed correctly into the vehicle if required
- The recalled Exterior Rear View Mirror Assembly(s) has been repackaged for shipment back to the manufacturer
- Campaign Label has been applied to the proper location
- Images and repair order have been attached to the warranty claim and submitted to Karma Automotive LLC

Karma Automotive Bulletins and service documents are intended for use by experienced and trained Technicians. If you lack the skills, tools, equipment and a suitable workshop for any procedure described in this document, we suggest you leave such repairs to an Authorized Karma Service Provider or qualified service center. See your service provider for advice on whether your vehicle may benefit from the information contained within this document. The information contained in the Karma Bulletin is accurate at the date of publication. However, Karma Automotive regularly updates technical information. Please check with your Karma Automotive Service Provider that the bulletin you intend to use contains the latest available information.