



RECALL CAMPAIGN BULLETIN

Classification: BR18-010A	Reference: NTB18-087A	Date: May 25, 2021
------------------------------	--------------------------	-----------------------

VOLUNTARY SAFETY RECALL CAMPAIGN 2009 MURANO; BRAKE FLUSH

This bulletin has been amended. See AMENDMENT HISTORY on the last page.
Discard all previous versions of this bulletin.

CAMPAIGN ID #: R1814
APPLIED VEHICLES: 2009 Murano (Z51)

**Check Service COMM or Dealer Business Systems (DBS)
National Service History to confirm campaign eligibility.**

INTRODUCTION

Nissan is conducting this Voluntary Safety Recall Campaign on certain specific model year 2009 Murano vehicles to remove the DOT 3 brake fluid from the brake system and replace it with new DOT 4 brake fluid. In rare instances, the ABS actuator and electronic control unit (ABS actuator) may need to be replaced. This service will be performed at no charge to the customer for parts or labor.

IDENTIFICATION NUMBER

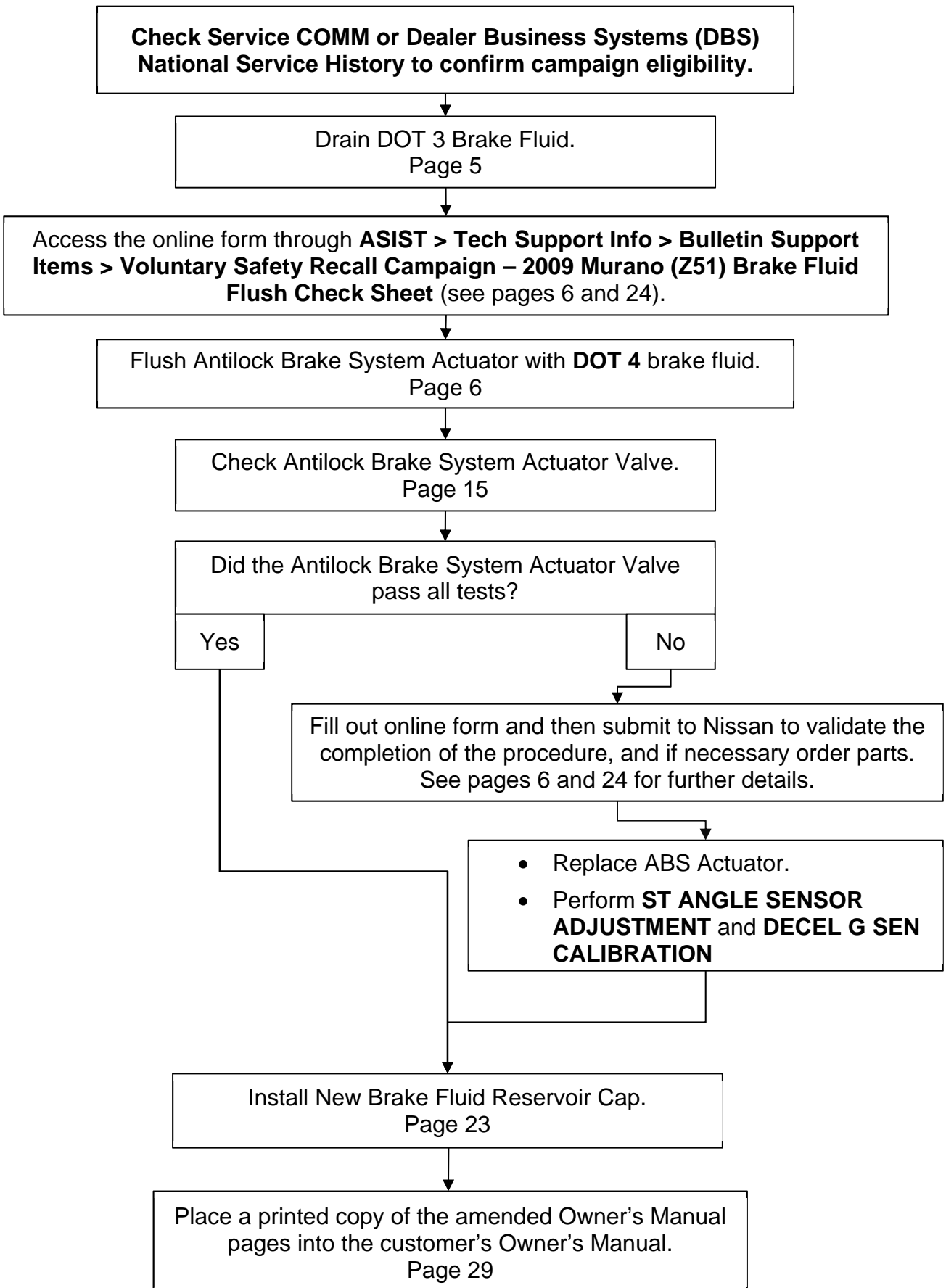
Nissan has assigned identification number R1814 to this campaign. This number must appear on all communication and documentation of any nature dealing with this campaign.

DEALER RESPONSIBILITY

It is the dealer's responsibility to check Service COMM or Dealer Business Systems (DBS) National Service History for the campaign status on each vehicle falling within the range of this voluntary safety recall which for any reason enters the service department. This includes vehicles purchased from private parties or presented by transient (tourist) owners and vehicles in a dealer's inventory. **Federal law requires that new vehicles in dealer inventory which are the subject of a safety recall must be corrected prior to sale. Failure to do so can result in civil penalties by the National Highway Traffic Safety Administration.** While federal law applies only to new vehicles, Nissan strongly encourages dealers to correct any used vehicles in their inventory before they are retailed.

Nissan Bulletins are intended for use by qualified technicians, not 'do-it-yourselfers'. Qualified technicians are properly trained individuals who have the equipment, tools, safety instruction, and know-how to do a job properly and safely. NOTE: If you believe that a described condition may apply to a particular vehicle, DO NOT assume that it does. See your Nissan dealer to determine if this applies to your vehicle.

Flow Chart



SERVICE PROCEDURE

IMPORTANT: Any deviation from this procedure is not allowed, including the use of any brake fluid other than the **DOT 4** shown in Figure 1.

The following Service Procedure uses an online form that must be filled out while performing the procedure (see page 24 for further details). When the form has been completed, it will be submitted to Nissan to validate the completion of the inspection and, if necessary, to provide parts ordering information.

- If you are connected to WiFi you may access the form through **ASIST > Tech Support Info > Bulletin Support Items > Voluntary Safety Recall Campaign – 2009 Murano (Z51) Brake Fluid Flush Check Sheet**.
- If you are not connected to WiFi at this time, use a printed copy of the **ONLINE FORM/PARTS ORDERING INFORMATION** (see page 24), and transfer the information to a WiFi connected ASIST PC, after the procedure has been completed.
- Before starting, make sure:
 - ASIST on the CONSULT PC has been synchronized (updated) to the current date.
 - All CONSULT-III plus (C-III plus) software updates (if any) have been installed.



Figure 1

1. Place the vehicle on a lift.
2. Open the hood and place clean fender covers on the fenders.
3. Raise the vehicle up to a comfortable height, and then remove all 4 wheel and tire assemblies.
4. Apply Nissan rust penetrant (or equivalent) to all of the brake caliper bleeder fittings.
IMPORTANT: Allow rust penetrant to soak for at least 10 minutes before attempting to loosen bleeder fittings.
5. Lower the vehicle so that you can enter the driver's door.

DOT 3 Brake Fluid Drain

NOTICE

To prevent damage to the vehicle paint and the brake system:

- DO NOT use a power bleeder of any type to bleed the brake fluid.
- Never spill or splash brake fluid on painted surfaces. Brake fluid may seriously damage paint. Wash with water if it gets on a painted surface.
- Keep water away from open brake hydraulic system components.

6. Drain the brake fluid from brake fluid reservoir as follows:

IMPORTANT: Monitor the level in the brake fluid reservoir while performing step 6. Do not allow it to go below the minimum (MIN) line.

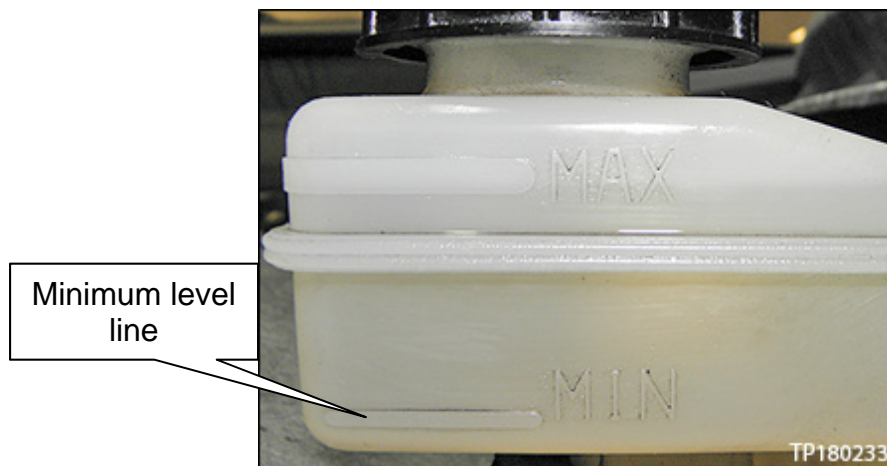


Figure 2

- a. Connect a vinyl tube to the bleeder valve of the right front brake caliper.
 - b. Loosen the right front caliper bleeder valve.
 - c. Slowly and repeatedly depress the brake pedal until the brake fluid drops to the minimum level mark of the brake fluid reservoir.
 - d. Tighten the bleeder valve.
 - e. Refill the brake fluid reservoir with **DOT 4** brake fluid to the maximum level mark.
 - f. Connect a vinyl tube to the bleeder valve of the left front brake caliper.
 - g. Loosen the left front caliper bleeder valve.
 - h. Repeatedly depress the brake pedal until the brake fluid drops to the minimum level mark of the brake fluid reservoir.
 - i. Tighten the bleeder valve.
7. Refill the brake fluid reservoir with **DOT 4** brake fluid to the maximum level mark.

Antilock Brake System Actuator Flush

The following Service Procedure uses an online form that must be filled out while performing the procedure.

- The form can be accessed by selecting **ASIST > Tech Support Info > Bulletin Support Items > Voluntary Safety Recall Campaign – 2009 Murano (Z51) Brake Fluid Flush Check Sheet** (see Figure 3 and Figure 4).
 - Further details can be found on page 24.
- When the form has been completed, it will be submitted to Nissan to validate the completion of the inspection and, if necessary, to provide parts ordering information.
- If you are not connected to WiFi at this time, use a printed copy of the **ONLINE FORM/PARTS ORDERING INFORMATION** (see page 24), and transfer the information to a WiFi connected ASIST PC, after the procedure has been completed.

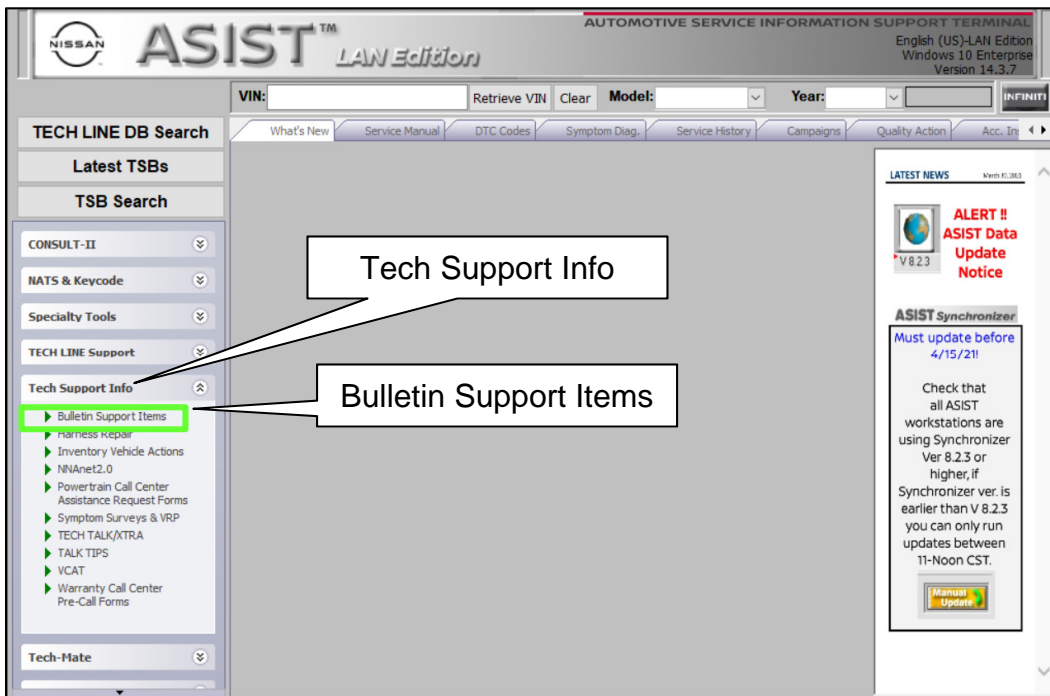


Figure 3

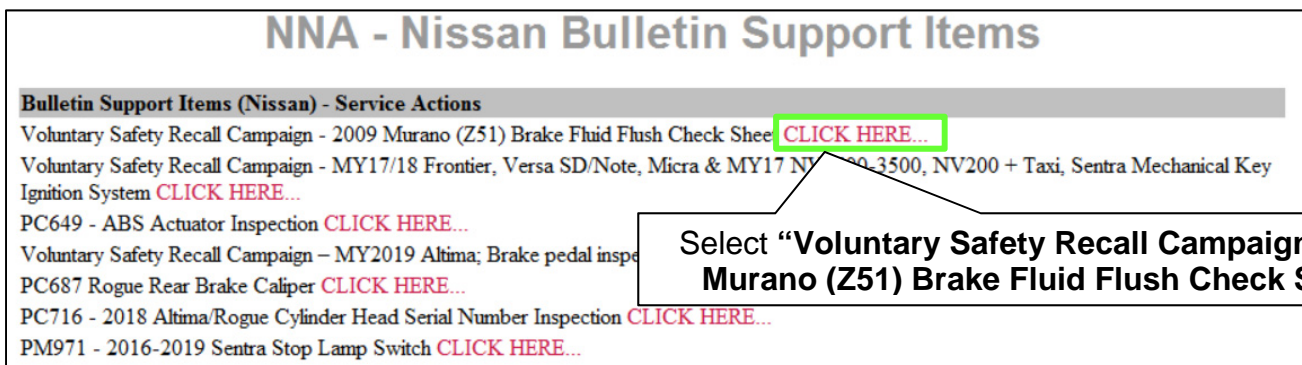


Figure 4

NOTICE

To prevent damage to the brake system, all of the following brake fluid bleed cycles must be completed to fully flush the brake system with DOT 4 brake fluid.

IMPORTANT: STOP and read steps 8-34 completely before proceeding.

8. Connect a battery maintainer/smart charger to the vehicle battery.
NOTE: Battery voltage must stay between 12 volts and 15.5 volts.
9. Turn the ignition ON, engine OFF.
10. Connect the VI to the vehicle.
11. Start C-III plus.
12. Wait for the VI to be recognized.
 - The serial number will display when the VI is recognized.
13. Select **Diagnosis (All Systems)**.

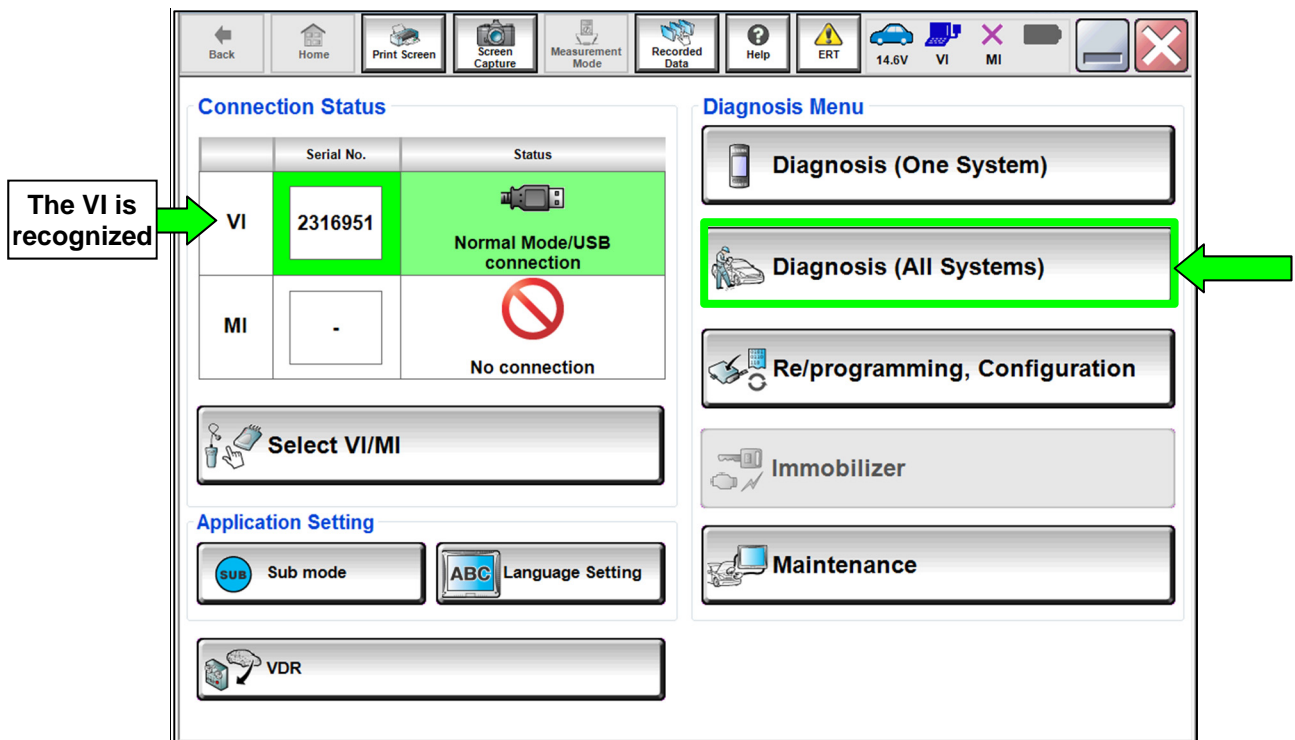


Figure 5

14. Select Automatic Selection(VIN).

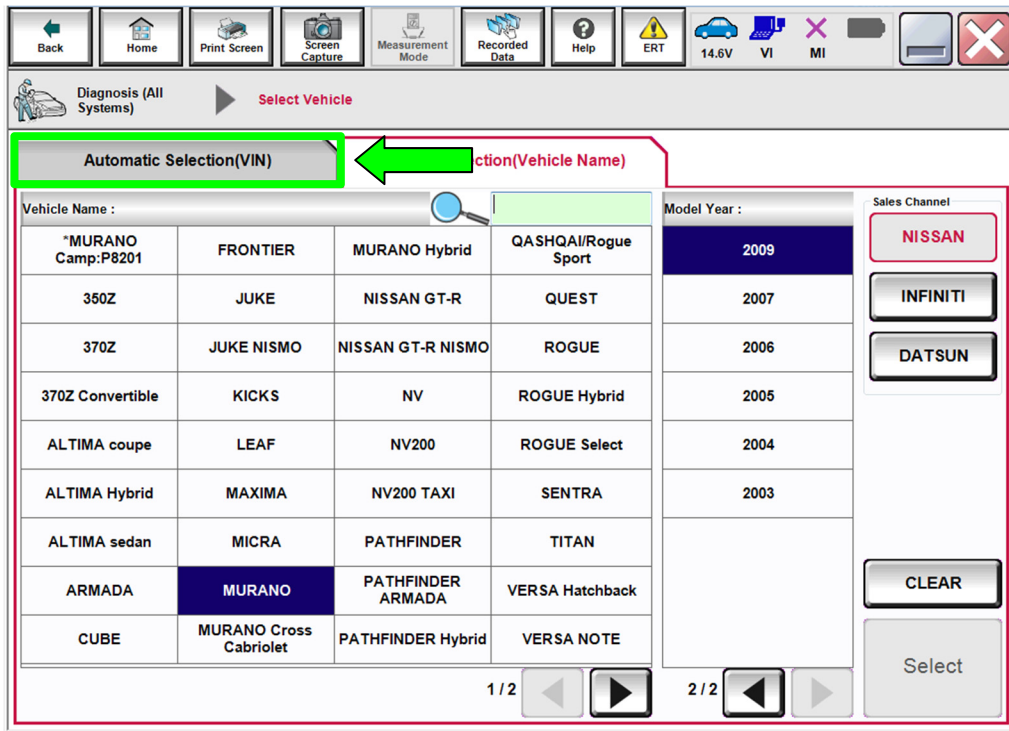


Figure 6

15. Confirm the VIN or Chassis # is correct, and then select Confirm.

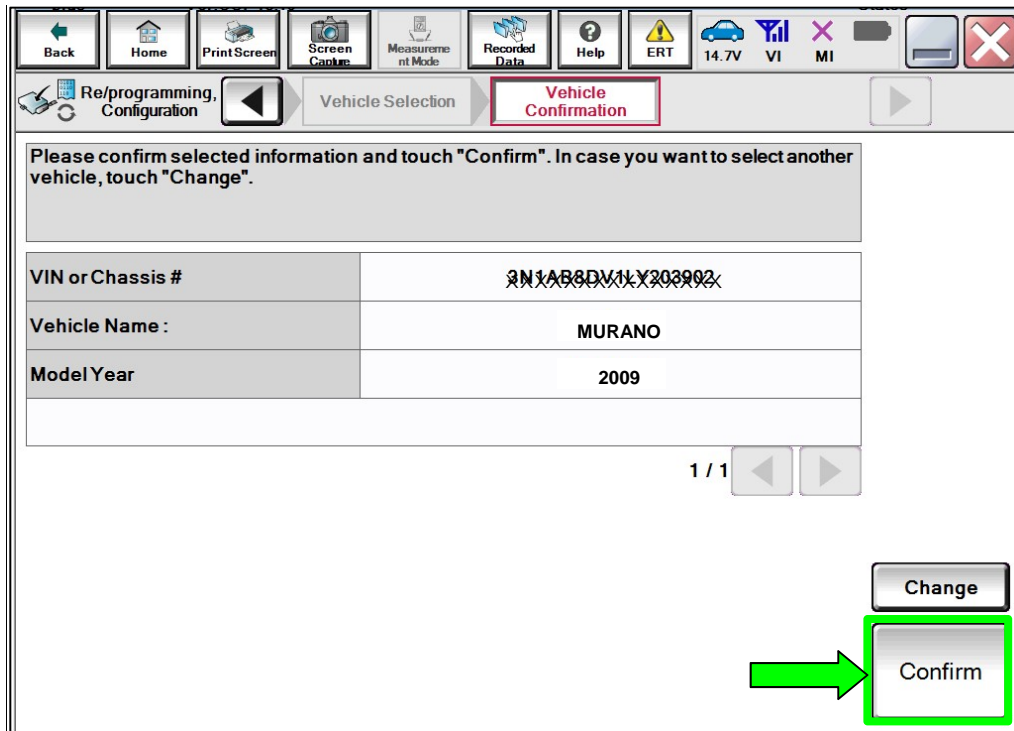


Figure 7

16. Select **ABS**.

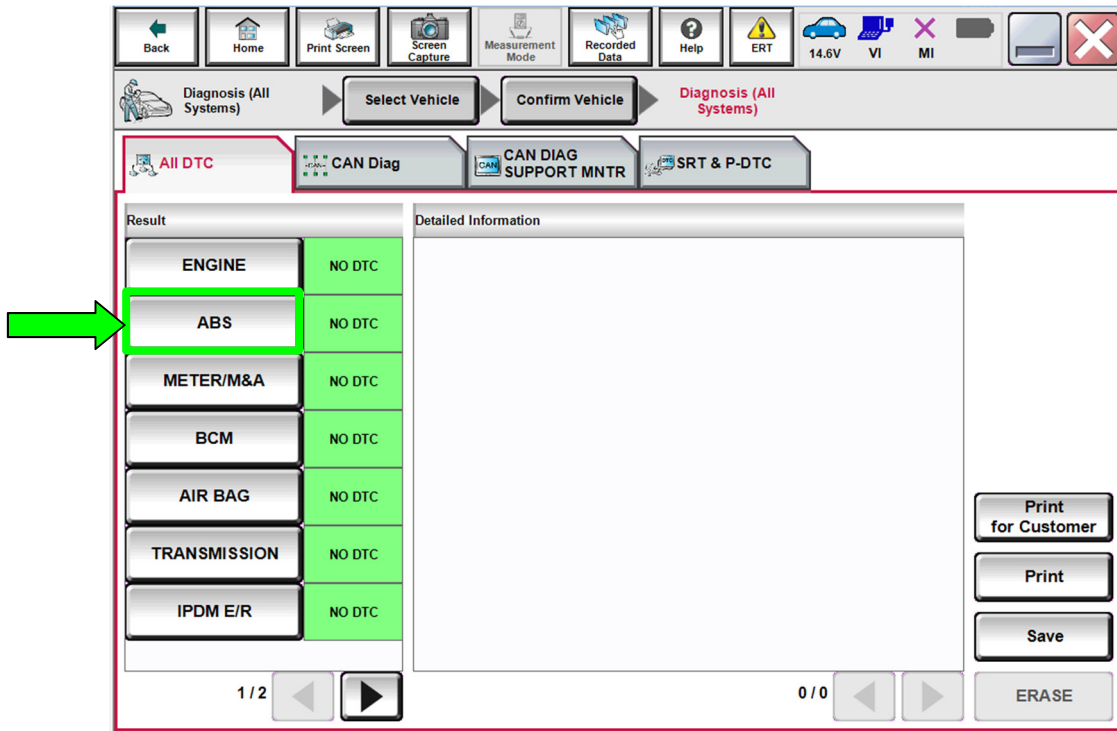


Figure 8

17. Select **Work support**.

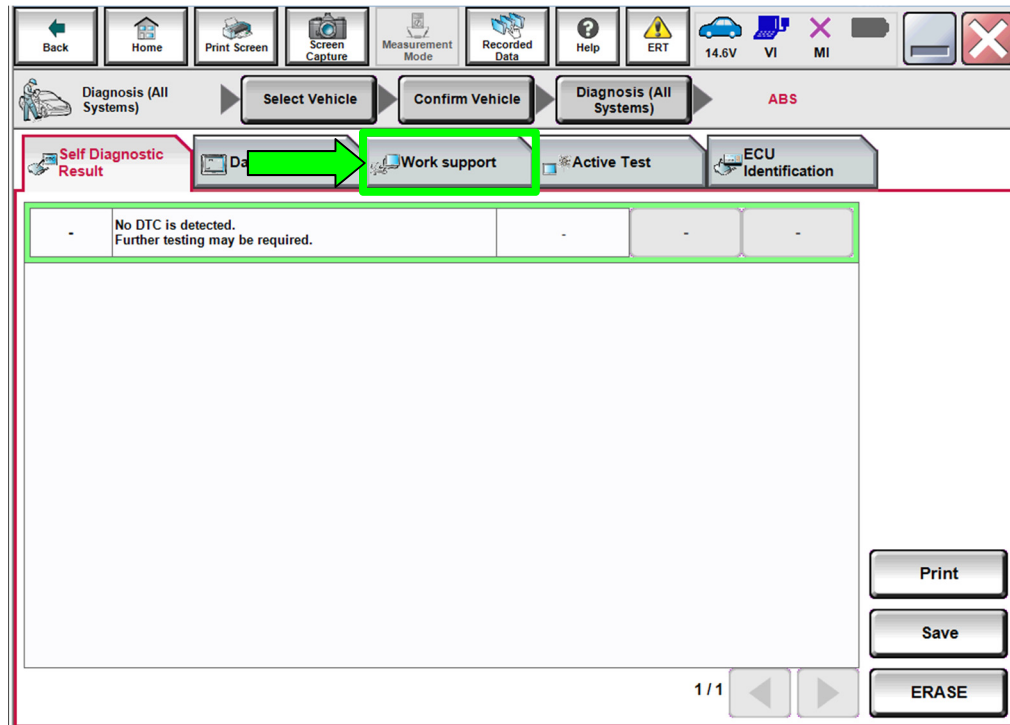


Figure 9

18. Select **Valve flushing**, and then select **Start**.

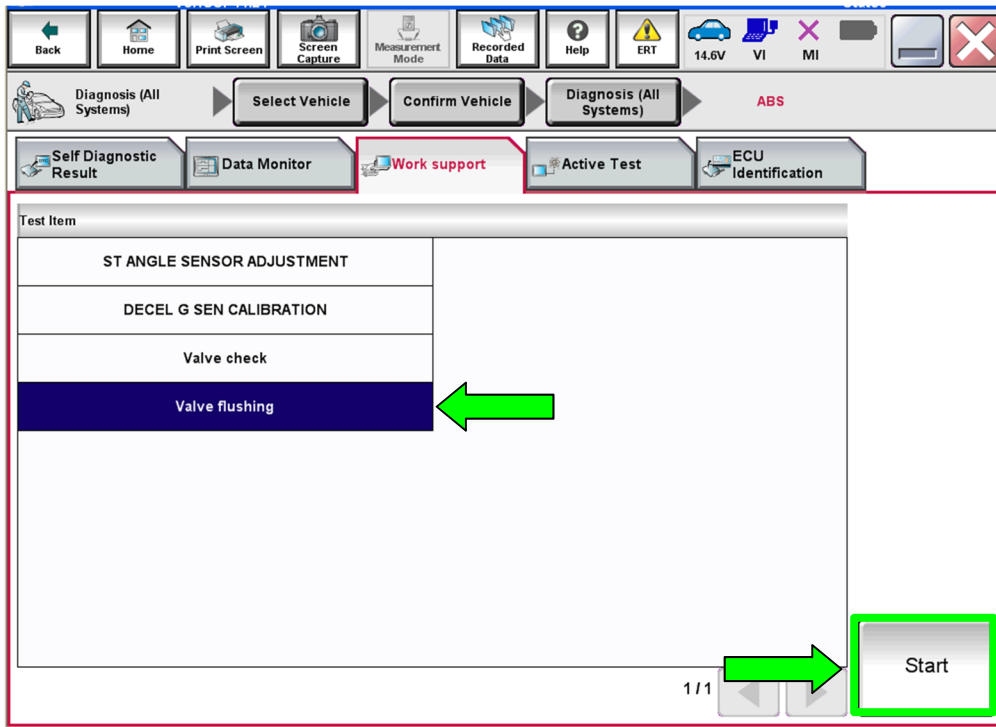


Figure 10

19. Press the brake pedal to raise the brake pressure to 21-39 bar (Figure 11).

20. While maintaining 21-39 bar of brake pressure, select **Next**.

NOTE: The brake pedal will drop after **Next** is selected. Do not release the brake pedal.

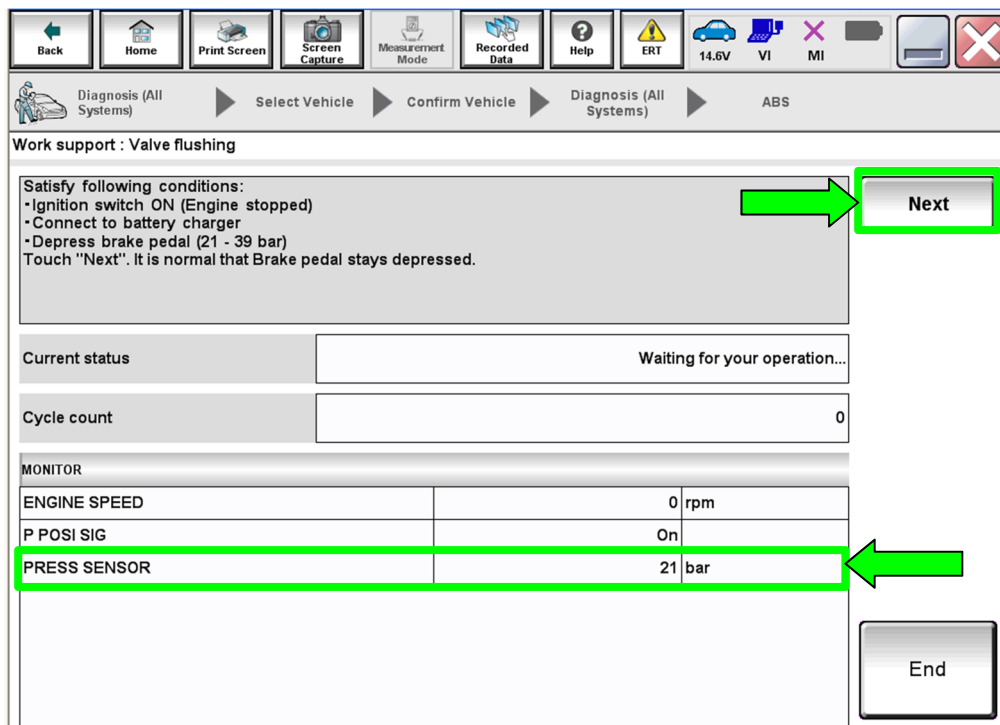


Figure 11

IMPORTANT: For the following steps:

- Brake pedal pressure must be at 21-39 bar during the entire valve check procedure.
 - If the pressure is outside this range, an error will occur as shown in Figure 12.
 - If this occurs, select **Next**, regulate brake pressure to 21-39 bar, and then restart the test.
 - Only select **End** if C-III plus is no longer responding. This will restart the test from the beginning.

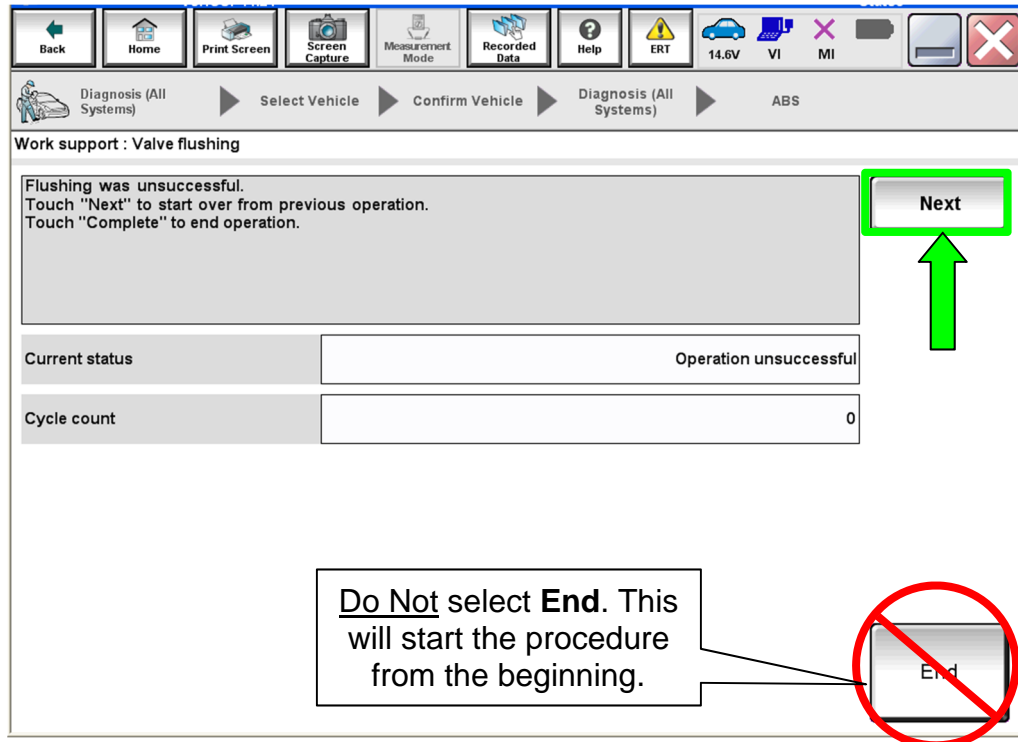


Figure 12

IMPORTANT: In step 21 select **Next** ONLY 1 time. Do Not select **Next** again until instructed to in step 23.

21. While continuing to press the brake pedal, select **Next**.

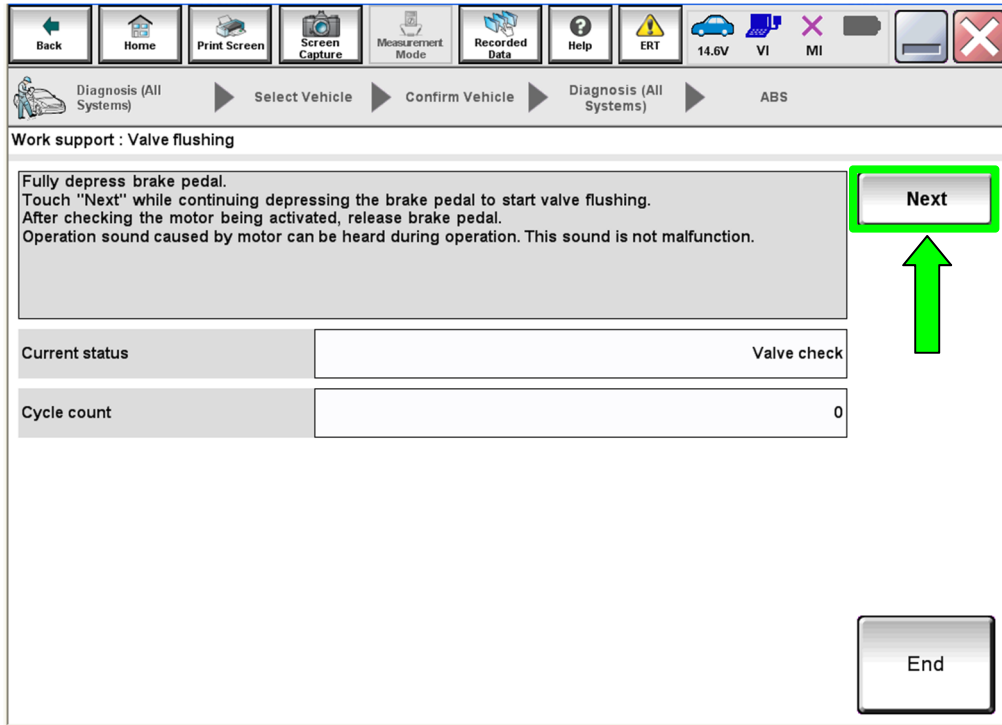


Figure 13

- When the ABS motor buzz sound is heard, **RELEASE** the brake pedal.
 - "ABS motor operating" will be displayed on the screen under **Current status**. See Figure 14.
- The ABS motor buzz will continue for 30 seconds.

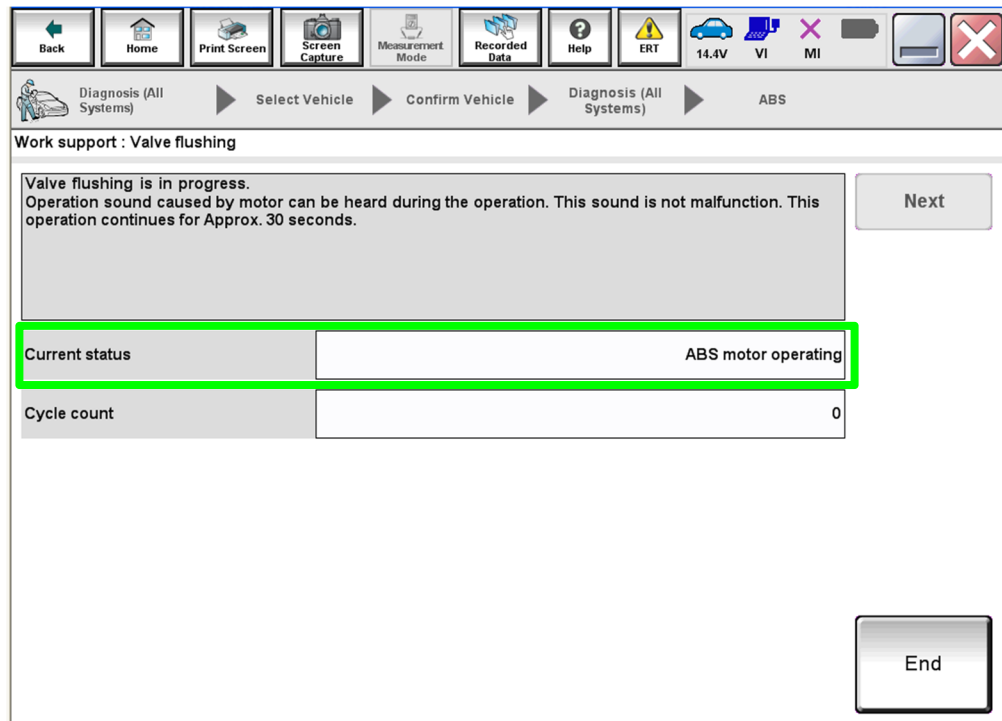


Figure 14

NOTICE

To prevent damage to the brake system, DO NOT use a power bleeder of any type in the following steps to bleed or drain the brake fluid.

22. Release some brake fluid from each brake caliper one time, as follows:

- All 4 brake calipers must be bled once, before selecting **Next**.
- Refill the brake fluid reservoir with **DOT 4** brake fluid as needed.

IMPORTANT: Do not allow the brake fluid reservoir to go below the minimum line.

- Connect a vinyl tube to the bleeder valve of the right rear brake caliper. Place the opposite end of the vinyl tube into a catch container.
- Fully depress the brake pedal 1 time, and then hold light pressure.
- Loosen the bleeder valve, while the brake pedal is being depressed, to bleed (release) the brake fluid, and then tighten the bleeder valve.
- Perform steps a through c to the left rear, right front and left front.
- Refill the brake fluid reservoir with **DOT 4** brake fluid to the maximum level mark.

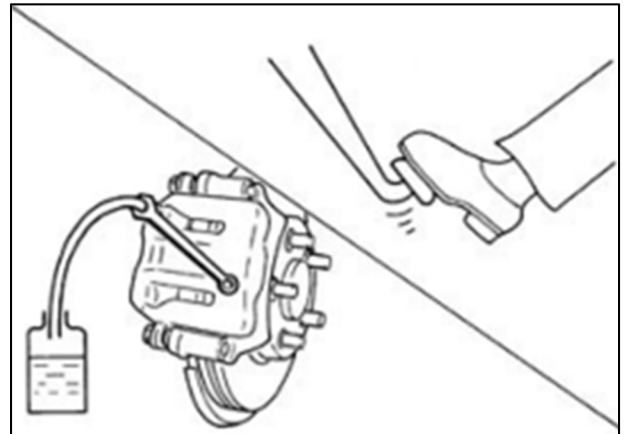


Figure 15

23. When the **Current status** shows “Operation wait”, select **Next** to run valve flushing again.

IMPORTANT: Brake fluid bleed cycles must all be completed to fully replace the brake system with DOT 4.

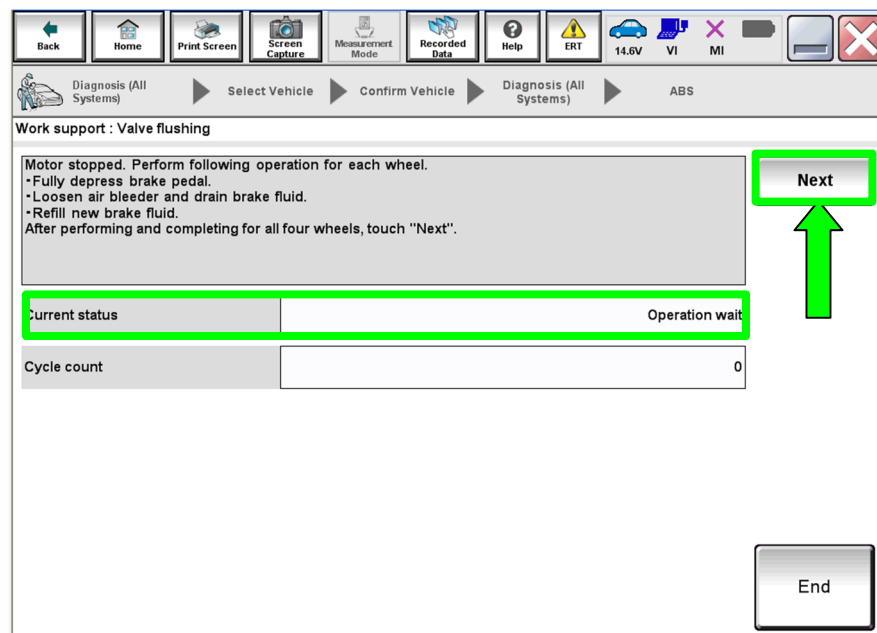


Figure 16

24. Repeat steps 19-23 thirteen more times until **Current status** displays “Complete”, and then select **End**.

IMPORTANT:

- Do not select **End** until 14 is displayed in **Cycle count**.
- **Cycle count** must indicate 14 before **Current status** will display Complete.

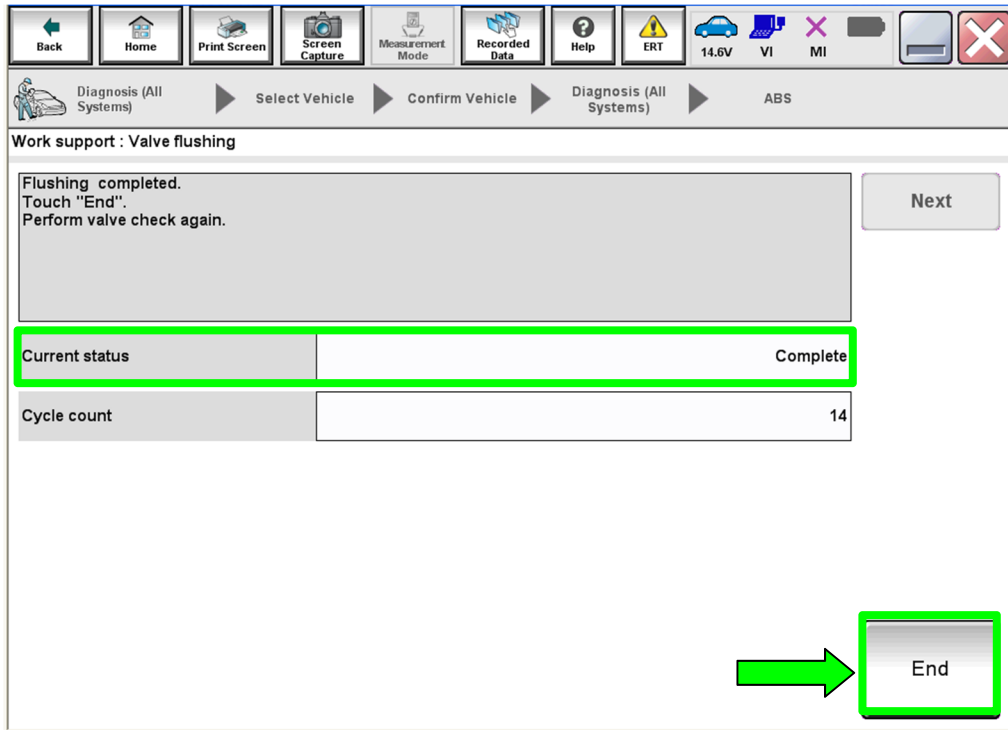


Figure 17

25. Remove the battery maintainer/smart charger from the vehicle.

Antilock Brake System Actuator Valve Check Procedure

NOTE: During the following procedure, warning lights in the combination meter will illuminate and remain ON until the valve check procedure is completed; this is normal.

The following Service Procedure uses an online form that must be filled out while performing the procedure.

- The form can be accessed by selecting **ASIST > Tech Support Info > Bulletin Support Items > Voluntary Safety Recall Campaign – 2009 Murano (Z51) Brake Fluid Flush Check Sheet** (see page 6, Figure 3 and Figure 4).
 - Further details can be found on page 24.
- When the form has been completed, it will be submitted to Nissan to validate the completion of the inspection and, if necessary, to provide parts ordering information.
- If you are not connected to WiFi at this time, use a printed copy of **ONLINE FORM/PARTS ORDERING INFORMATION** (see page 24), and transfer the information to a WiFi connected ASIST PC, after the procedure has been completed.

The following steps will check all four anti-lock brake valves in the following order:

- **FR** – Front Right
- **FL** – Front Left
- **RR** – Rear Right
- **RL** – Rear Left

26. Start the engine.

27. Select **Valve check**, and then select **Start**.

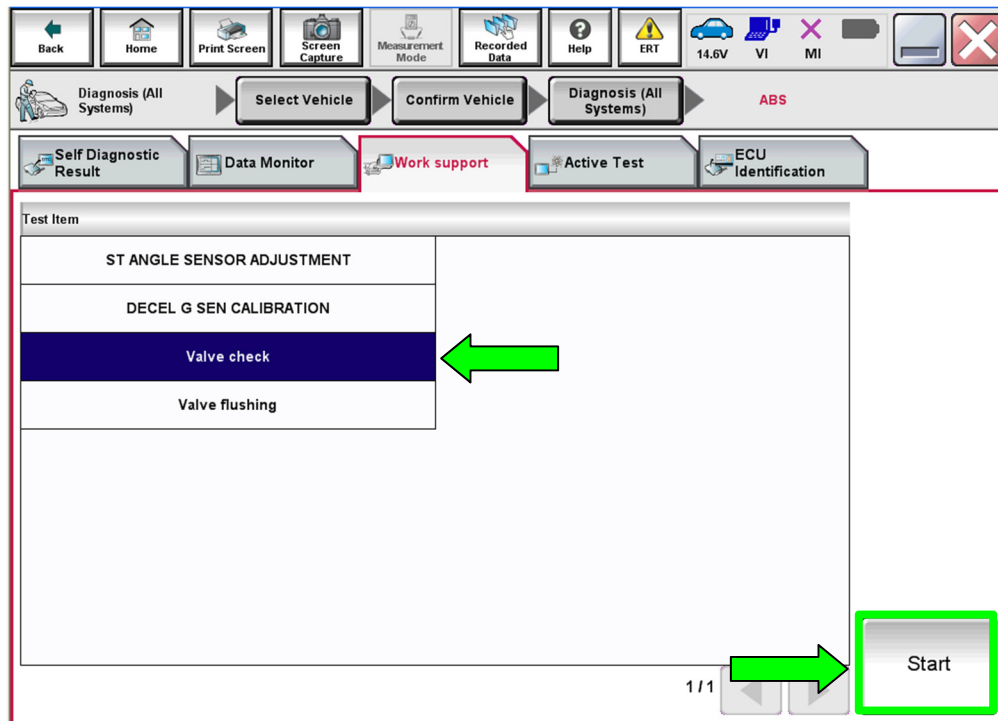


Figure 18

IMPORTANT: For the following steps:

- Brake pedal pressure must be at 21-39 bar during the entire valve check procedure.
 - If the pressure is outside this range, an error will occur as shown in Figure 19.
 - If this occurs, select **Retry**, regulate brake pressure to 21-39 bar, and then restart the test.
 - Only select **End** if C-III plus is no longer responding.

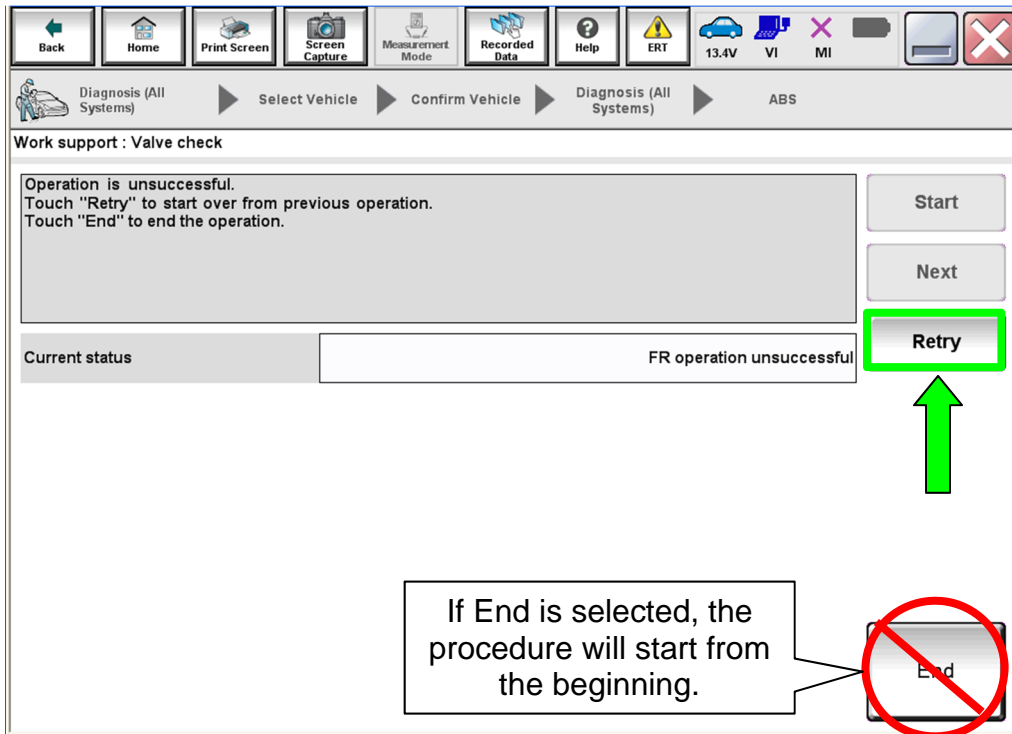


Figure 19

28. Press the brake pedal **firmly** to raise the brake pressure to 21-39 bar.

29. While maintaining 21-39 bar of brake pressure, select **Start** to check the first valve (FR valve).

NOTE: If the brake pressure is not within the specified range, the **Start** button cannot be selected.

- The valve will open right after **Start** is selected and the brake pedal should smoothly move down toward the floor.

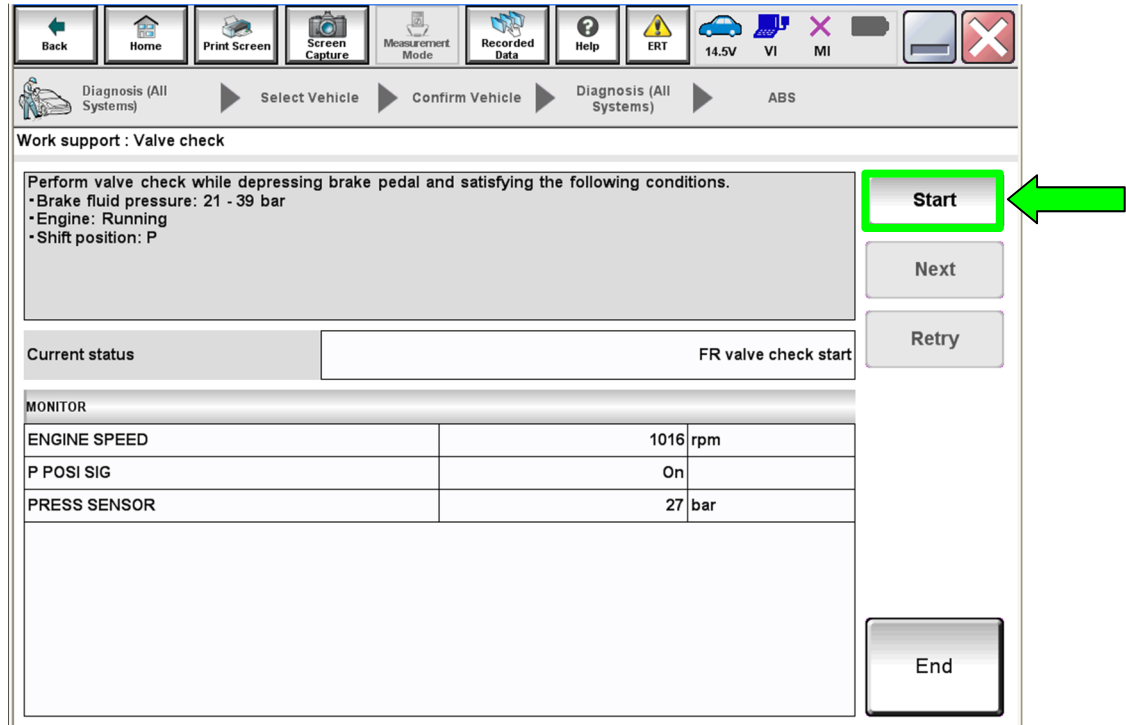


Figure 20

30. Did the brake pedal move down toward the floor?

- **YES:** Proceed to step 31 on page 19.
- **NO:** Proceed to the next page.

Only perform the following if **NO** was the answer to step 30:

- a. Select **End**.
- b. Turn the engine OFF.
- c. Submit the online form that was filled out while performing the service procedure to order parts (see page 24).
- d. Replace the ABS actuator.
 - For ABS actuator replacement, refer to the ESM section **BRC – Brake Control System**.
 - **IMPORTANT:** Refill with **DOT 4** brake fluid ONLY.
- e. Bleed the air from each brake circuit as follows:
 - 1) Connect a vinyl tube to the bleeder valve of the right rear brake caliper. Place the opposite end of the vinyl tube into a catch container.
 - 2) Fully depress the brake pedal 4 to 5 times, and then hold light pressure.
 - 3) Loosen the bleeder valve, while the brake pedal is being depressed, to bleed air, and then tighten the bleeder valve.
 - 4) Perform steps 1 through 3 to the left rear, right front and left front calipers until all air has been removed from the brake hydraulic system.
 - 5) Refill the brake fluid reservoir with DOT 4 brake fluid to the maximum level mark.
- f. Perform **ST ANGLE SENSOR ADJUSTMENT** and **DECEL G SEN CALIBRATION**.
 - Follow C-III plus on screen instructions.
- g. Skip to step 37 on page 22.

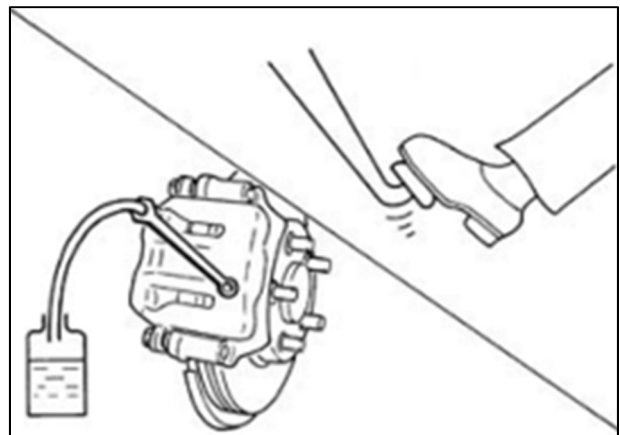


Figure 21

31. Select **Next**.

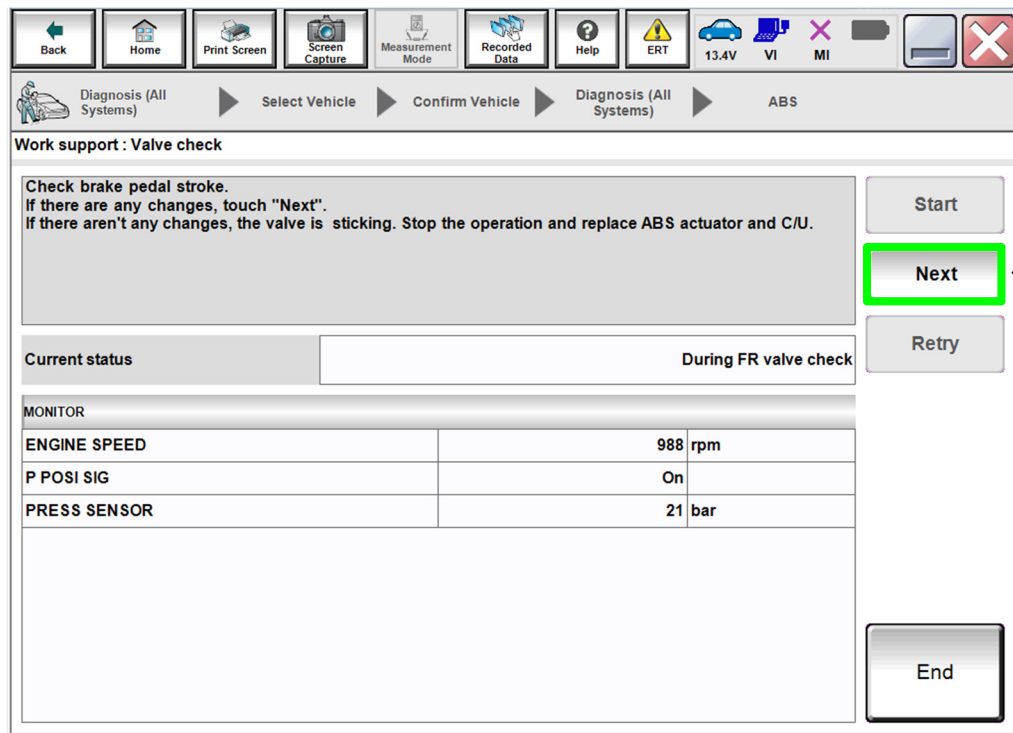


Figure 22

32. While maintaining 21-39 bar of brake pressure, select **Next** again.

- After **Next** is selected, the ABS pump motor will run/buzz and the brake pedal should forcibly move up away from the floor.

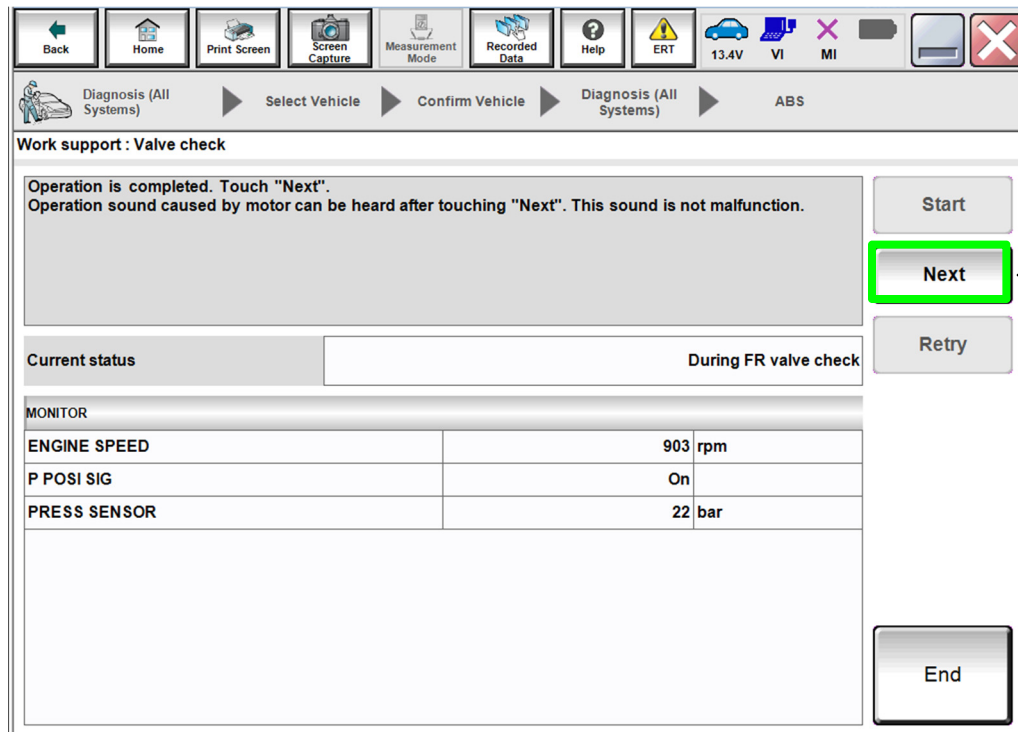


Figure 23

- After **Next** is selected, “ABS motor operating” will be displayed under **Current status**.
- This operation will continue for 20 seconds before the **Start** button will be active again.

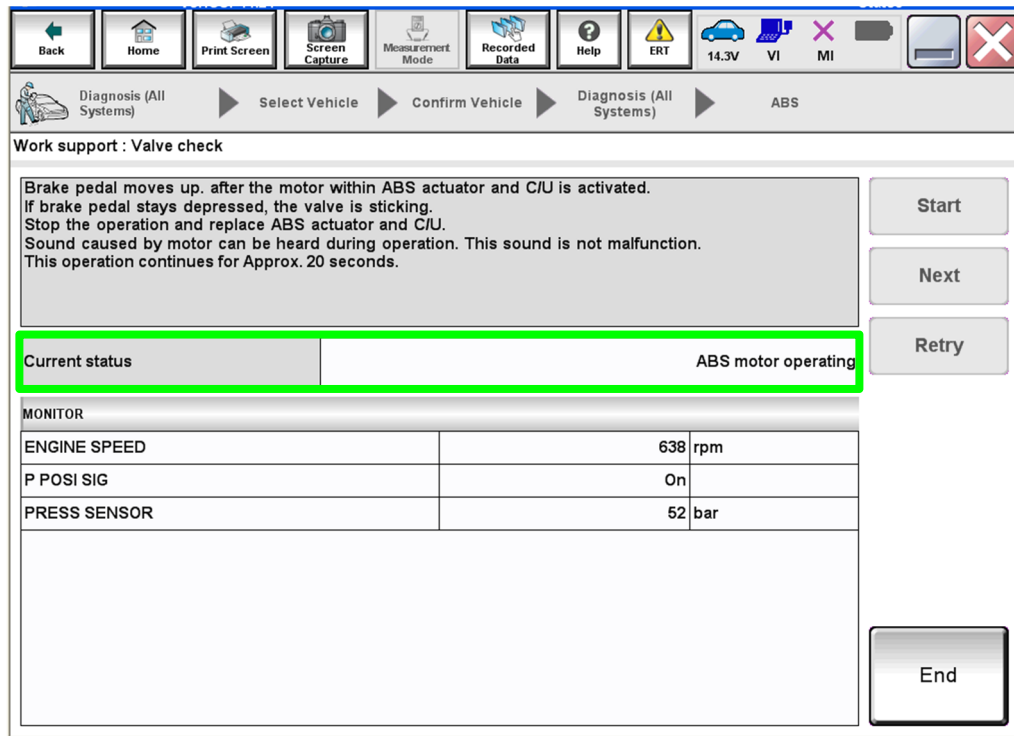


Figure 24

33. Did the brake pedal move up away from the floor?

- **YES:** Proceed to step 34 on page 22.
- **NO:** Proceed to the next page.

Only perform the following if **NO** was the answer to step 33:

- a. Select **End**.
- b. Turn the engine OFF.
- c. Submit the online form that was filled out while performing the service procedure for parts ordering information (see page 24).
- d. Replace the ABS actuator.
 - For ABS actuator replacement, refer to the ESM section **BRC – Brake Control System**.
 - **IMPORTANT:** Refill with **DOT 4** brake fluid ONLY.
- e. Bleed the air from each brake circuit as follows:
 - 1) Connect a vinyl tube to the bleeder valve of the right rear brake caliper. Place the opposite end of the vinyl tube into a catch container.
 - 2) Fully depress the brake pedal 4 to 5 times, and then hold light pressure.
 - 3) Loosen the bleeder valve, while the brake pedal is being depressed, to bleed air and then tighten the bleeder valve.
 - 4) Perform steps 1 through 3 to the left rear, right front and left front calipers until all air has been removed from the brake hydraulic system.
 - 5) Refill the brake fluid reservoir with DOT 4 brake fluid to the maximum level mark.
- f. Perform **ST ANGLE SENSOR ADJUSTMENT** and **DECEL G SEN CALIBRATION**.
 - Follow C-III plus on screen instructions.
- g. Skip to step 37 on page 22.

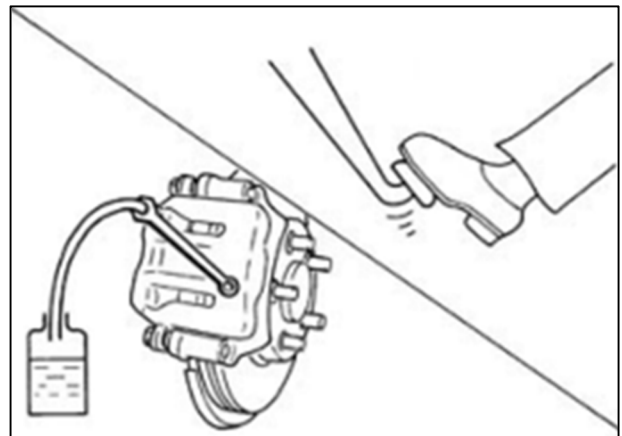


Figure 25

34. Perform steps 28 through 33 on the FL, RR and RL valves and then proceed to step 35.

NOTE: When steps 28 to 33 have been completed for all four wheels (FR, FL, RR and RL), **Current status** on the C-III plus screen will display “Complete” (Figure 26).

35. Select **End**.

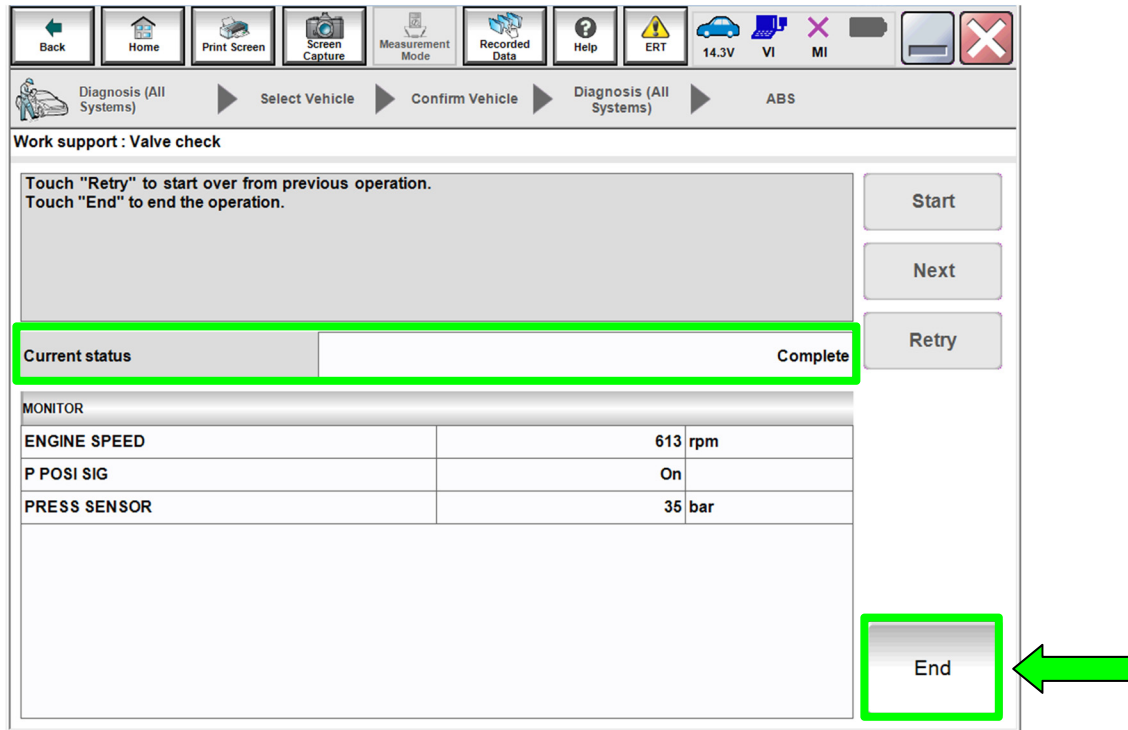


Figure 26

36. Turn the engine OFF.
37. Disconnect the C-III plus, VI and battery maintainer/smart charger from the vehicle.
38. Reinstall the wheels and torque lug nuts.
- Torque: 108 N•m (11kg-m, **80 ft-lb**)

Install New Brake Fluid Reservoir Cap

39. Mark the top of the new DOT 4 brake fluid reservoir cap with white touch-up paint, as shown in Figure 27.

- Highlight “USE ONLY DOT 4”.

NOTE: This cap will indicate to **USE ONLY DOT 4** as the service brake fluid.

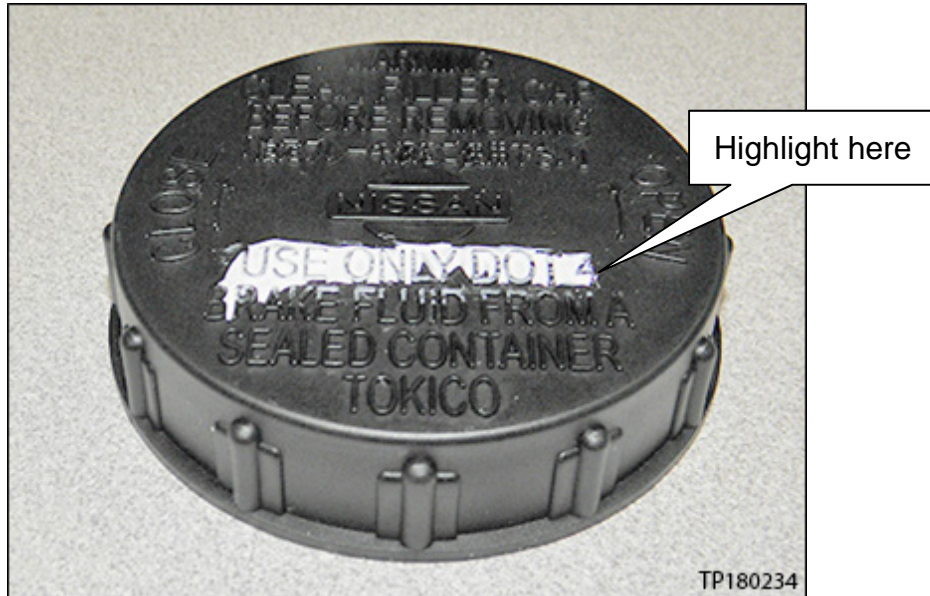


Figure 27

40. Replace the brake fluid reservoir cap (Figure 28) with the new DOT 4 cap marked in step 39.

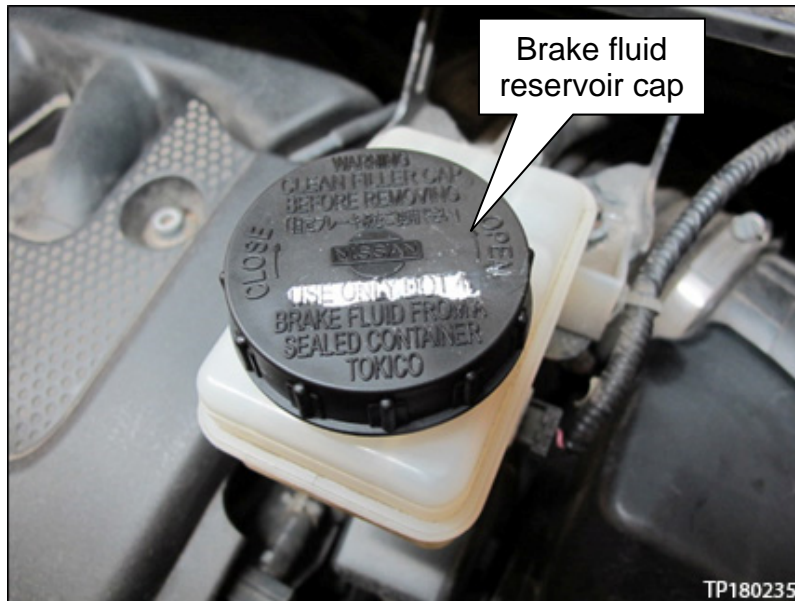


Figure 28

41. Place a printed copy of amended Owner's Manual pages into the customer's Owner's Manual (see page 29).

ONLINE FORM/PARTS ORDERING INFORMATION

The following online form must be filled out while performing the service procedure and then submitted to Nissan to validate the completion of the inspection and, if necessary, to provide parts ordering information.

- The form can be accessed by selecting **ASIST > Tech Support Info > Bulletin Support Items > Voluntary Safety Recall Campaign – 2009 Murano (Z51) Brake Fluid Flush Check Sheet** (see page 6, Figure 3 and Figure 4).

42. Input vehicle VIN, Dealer Number, Technician Name, Technician ID, Service Manager and whether FWD or AWD (Figure 29).

VIN	<input type="text"/>	
Model Year	<input type="text" value="2009"/>	
Model	<input type="text" value="Murano"/>	
Dealer Number	<input type="text"/>	
Technician Name	<input type="text"/>	
Technician ID	<input type="text"/>	
Service Manager	<input type="text"/>	
Drivetrain	<input type="radio"/> FWD <input type="radio"/> AWD	

Figure 29

43. While completing the Valve Flushing Process, utilize the Valve Flushing Checklist to assist in tracking and completion (Figure 30).

Valve Flushing - Fill Reservoir After Each Check														
Test #	1	2	3	4	5	6	7	8	9	10	11	12	13	14
Flush	<input type="checkbox"/>	<input type="checkbox"/>	<input type="checkbox"/>	<input type="checkbox"/>	<input type="checkbox"/>	<input type="checkbox"/>	<input type="checkbox"/>	<input type="checkbox"/>	<input type="checkbox"/>	<input type="checkbox"/>	<input type="checkbox"/>	<input type="checkbox"/>	<input type="checkbox"/>	<input type="checkbox"/>
Bleed System	<input type="checkbox"/>	<input type="checkbox"/>	<input type="checkbox"/>	<input type="checkbox"/>	<input type="checkbox"/>	<input type="checkbox"/>	<input type="checkbox"/>	<input type="checkbox"/>	<input type="checkbox"/>	<input type="checkbox"/>	<input type="checkbox"/>	<input type="checkbox"/>	<input type="checkbox"/>	<input type="checkbox"/>

Figure 30

44. Use the Valve Check checklist/drop down menu to record the Valve Inspection (yes/no) as it occurs (Figure 31).

Valve Check		
	Valve Inspection	
	Step 1	Step 2
	Did the brake pedal move towards floor?	Did the brake pedal move upward?
FR Valve	<input type="text" value=""/>	<input type="text" value=""/>
FL Valve	<input type="text" value=""/>	<input type="text" value=""/>
RR Valve	<input type="text" value=""/>	<input type="text" value=""/>
RL Valve	<input type="text" value=""/>	<input type="text" value=""/>
Actuator Condition		

Figure 31

45. Once completed, check the “Dealer Declaration” boxes to validate Brake fluid and Inspection completion.

<p>Dealer Declaration</p> <p><input type="checkbox"/> I confirm that DOT 4 Brake Fluid Part #999MP1LM6D4 is used.</p> <p><input type="checkbox"/> I confirm that each hydraulic unit valve check and hydraulic unit flushing was completed per this checksheet and as described in the service campaign bulletin.</p>
--

Figure 32

a. Once all the steps are completed, select **Submit**.

VIN	Example only													
Model Year														
Model	Murano													
Dealer Number	0000													
Technician Name	John Doe													
Technician ID	0101													
Service Manager	Bob Doe													
Drivetrain	<input type="radio"/> FWD <input type="radio"/> AWD													

Valve Flushing - Fill Reservoir After Each Check														
Test #	1	2	3	4	5	6	7	8	9	10	11	12	13	14
Flush	<input checked="" type="checkbox"/>	<input checked="" type="checkbox"/>	<input checked="" type="checkbox"/>	<input checked="" type="checkbox"/>	<input checked="" type="checkbox"/>	<input checked="" type="checkbox"/>	<input checked="" type="checkbox"/>	<input checked="" type="checkbox"/>	<input checked="" type="checkbox"/>	<input checked="" type="checkbox"/>	<input checked="" type="checkbox"/>	<input checked="" type="checkbox"/>	<input checked="" type="checkbox"/>	<input checked="" type="checkbox"/>
Bleed System	<input checked="" type="checkbox"/>	<input checked="" type="checkbox"/>	<input checked="" type="checkbox"/>	<input checked="" type="checkbox"/>	<input checked="" type="checkbox"/>	<input checked="" type="checkbox"/>	<input checked="" type="checkbox"/>	<input checked="" type="checkbox"/>	<input checked="" type="checkbox"/>	<input checked="" type="checkbox"/>	<input checked="" type="checkbox"/>	<input checked="" type="checkbox"/>	<input checked="" type="checkbox"/>	<input checked="" type="checkbox"/>

Valve Check		
	Valve Inspection	
	Step 1	Step 2
	Did the brake pedal move towards floor?	Did the brake pedal move upward?
FR Valve	Yes <input type="checkbox"/>	Yes <input type="checkbox"/>
FL Valve	Yes <input type="checkbox"/>	Yes <input type="checkbox"/>
RR Valve	Yes <input type="checkbox"/>	Yes <input type="checkbox"/>
RL Valve	Yes <input type="checkbox"/>	Yes <input type="checkbox"/>
Actuator Condition		

Dealer Declaration

I confirm that DOT 4 Brake Fluid Part #999MP1LM6D4 is used.

I confirm that each hydraulic unit valve check and hydraulic unit flushing was completed per this checksheet and as described in the service campaign bulletin.

Submit

←

Figure 33

- b. For a “Good” ABS Actuator the following screen will populate. Follow instructions in green pop-up box, print and attach the ABS Actuator Checklist to Work Order.

INSPECTION COMPLETE

- Please Print the ABS Check Sheet and attach to the Work Order
- Place a printed Copy of Amended Owner’s Manual page(s) into the Owner’s Manual
- Once complete, Submit warranty claim using claims coding

VIN	<input type="text"/>	
Model Year	<input type="text"/>	
Model	<input type="text" value="Murano"/>	
Dealer Number	<input type="text" value="0000"/>	
Technician Name	<input type="text" value="John Doe"/>	
Technician ID	<input type="text" value="0101"/>	
Service Manager	<input type="text" value="Bob Doe"/>	
Drivetrain	<input checked="" type="radio"/> FWD <input type="radio"/> AWD	

Valve Check

	Valve Inspection	
	Step 1	Step 2
	Did the brake pedal move towards floor?	Did the brake pedal move upward?
FR Valve	<input type="text" value="Yes"/>	<input type="text" value="Yes"/>
FL Valve	<input type="text" value="Yes"/>	<input type="text" value="Yes"/>
RR Valve	<input type="text" value="Yes"/>	<input type="text" value="Yes"/>
RL Valve	<input type="text" value="Yes"/>	<input type="text" value="Yes"/>
Actuator Condition	<input type="text" value="OK"/>	<input type="text" value="OK"/>

Dealer Declaration

I confirm that DOT 4 Brake Fluid Part #999MP1LM6D4 is used.

I confirm that each hydraulic unit valve check and hydraulic unit flushing was completed per this checksheet and as described in the service campaign bulletin.

Print

Figure 34

- c. For a “No-Good” ABS Actuator the screen in Figure 35 will populate. Follow the instructions in the yellow pop-up box.

This screen provides the ABS part number that needs to be ordered in DBS.

Do not file the warranty claim until the ABS Actuator has been installed.

Inspection Result is NG

- Replace the ABS Actuator
- Please Print the ABS Check Sheet and attach to the Work Order
- Place a parts order in DBS for Part Number : D7660-1V40B
- File the warranty claim AFTER the actuator is Installed on vehicle
- Place a Printed Copy of the Amended Owner’s Manual page(s) into the Owners Manual

VIN	<input type="text"/>	
Model Year	Example only	
Model	<input type="text" value="Murano"/>	
Dealer Number	<input type="text" value="0000"/>	
Technician Name	<input type="text" value="John Doe"/>	
Technician ID	<input type="text" value="0101"/>	
Service Manager	<input type="text" value="Bob Doe"/>	
Drivetrain	<input checked="" type="radio"/> FWD <input type="radio"/> AWD	

Valve Check

	Valve Inspection	
	Step 1	Step 2
	Did the brake pedal move towards floor?	Did the brake pedal move upward?
FR Valve	<input type="text" value="Yes"/>	<input type="text" value="Yes"/>
FL Valve	<input type="text" value="Yes"/>	<input type="text" value="Yes"/>
RR Valve	<input type="text" value="Yes"/>	<input type="text" value="Yes"/>
RL Valve	<input type="text" value="Yes"/>	<input type="text" value="No"/>
Actuator Condition	<input type="text" value="OK"/>	<input type="text" value="NG"/>

Dealer Declaration

I confirm that DOT 4 Brake Fluid Part #999MP1LM6D4 is used.

I confirm that each hydraulic unit valve check and hydraulic unit flushing was completed per this checksheet and as described in the service campaign bulletin.

Figure 35

Owner's Manual Pages

BRAKE FLUID

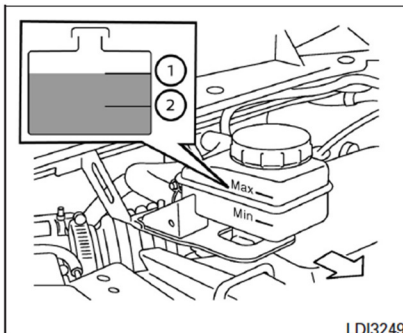
For additional brake fluid information, see "CAPACITIES AND RECOMMENDED FUEL/LUBRICANTS" in the "9. Technical and consumer information" section of this manual.

⚠ WARNING

- Use only new fluid from a sealed container. Old, inferior or contaminated fluid may damage the brake system. The use of improper fluids can damage the brake system and affect the vehicle's stopping ability.
- Clean the filler cap before removing.
- Brake fluid is poisonous and should be stored carefully in marked containers out of reach of children.

⚠ CAUTION

Do not spill the fluid on any painted surfaces. This will damage the paint. If fluid is spilled, immediately wash the surface with water.



LDI3249

Check the fluid level in the reservoir. If the fluid is below the MIN line② or the brake warning light comes on, add Genuine NISSAN brake fluid CLARIANT 6M DOT4 or equivalent DOT4 up to the MAX line①. If the fluid must be added frequently, the system should be checked by a NISSAN dealer.

CAPACITIES AND RECOMMENDED FUEL/LUBRICANTS

The following are approximate capacities. The actual refill capacities may be a little different. When refilling, follow the procedure instructed in the "8. Maintenance and do-it-yourself" section to determine the proper refill capacity.

	Capacity (Approximate)			Recommended specifications
	US measure	Imp measure	Liter	
Fuel	21-5/8 gal	18 gal	82	Unleaded gasoline with an octane rating of at least 87 AKI (RON 91)*1
Engine oil*2				
Drain and refill				
With oil filter change	4-7/8 qt	4 qt	4.6	• Engine oil with API Certification Mark*3
Without oil filter change	4-1/2 qt	3-3/4 qt	4.3	• Viscosity SAE 5W-30
Cooling system				
With reservoir	10 qt	8-1/4 qt	9.4	50% Genuine NISSAN Long Life Antifreeze/Coolant or equivalent
Reservoir	7/8 qt	3/4 qt	0.8	50% Demineralized or distilled water
Continuously Variable Transmission (CVT) fluid	—	—	—	Genuine NISSAN CVT Fluid NS-2*4
Differential gear oil	—	—	—	Genuine NISSAN Differential Oil Hypoid Super GL-5 80W-90 or API GL-5 Viscosity SAE 80W-90*5
Transfer oil	—	—	—	Genuine NISSAN Differential Oil Hypoid Super GL-5 80W-90 or API GL-5 Viscosity SAE 80W-90
Power steering fluid (PSF)	Refill to the proper level according to the instructions in the "8. Maintenance and do-it-yourself" section.			Genuine NISSAN PSF or equivalent*8
Brake fluid				Genuine NISSAN brake fluid CLARIANT 6M DOT4 or equivalent DOT4
Multi-purpose grease	—	—	—	NLGI No. 2 (Lithium Soap base)
Air conditioning system refrigerant	—	—	—	HFC-134a (R-134a)*7
Air conditioning system lubricants	—	—	—	NISSAN A/C System Oil Type R or exact equivalent
Window washer fluid	—	—	—	Genuine NISSAN Windshield Washer Concentrate Cleaner & Antifreeze or equivalent

*1: For additional information, see "FUEL RECOMMENDATION" later in this section.

*2: For additional information, see "ENGINE OIL" in the "8. Maintenance and do-it-yourself" section for changing engine oil.

*3: For additional information, see "ENGINE OIL AND OIL FILTER RECOMMENDATION" later in this section.

*4: Use only Genuine NISSAN CVT Fluid NS-2. Using transmission fluid other than Genuine NISSAN CVT Fluid NS-2 will damage the CVT, which is not covered by the NISSAN new vehicle limited warranty.

*5: For hot climates, viscosity SAE 90 is suitable for ambient temperatures above 32°F (0°C).

*6: Available in mainland U.S.A. through a NISSAN dealer.

*7: For additional information, see "VEHICLE IDENTIFICATION" later in this section for air conditioner specification label.

*8: DEXRON™VI type ATF or Canada NISSAN Automatic Transmission Fluid may also be used.

PARTS INFORMATION

DESCRIPTION	PART NUMBER	QUANTITY
Nissan Genuine Brake Fluid (1) (DOT 4)	999MP-1LM6D4 (2)	1
Master Cylinder Reservoir Cap	D6020-64J0A	1
ABS Actuator	(3)	1
White Touch-up Paint (GLACIER WHITE)	999PP-SDQAK	As needed
Rust Penetrant	999MP-A3020P	(4)

- (1) Only use the 1.06 quart (1 liter) size DOT 4 specifically supplied for this service procedure.
- (2) Order this item through the Nissan Maintenance Advantage program: Phone 877-NIS-NMA1 (877-647-6621). Website order via link on the dealer portal; www.NNAnet.com and click on the "Maintenance Advantage" link.
- (3) Submit the online form that was filled out while performing the service procedure for parts ordering information.
- (4) Shop supply.

EXPENSE CODE

EXPENSE CODE	DESCRIPTION	MAX AMOUNT
105	Touch-up Paint	\$0.30

CLAIMS INFORMATION

Submit a "CM" line claim using the following claims coding:

CAMPAIGN ("CM") ID	DESCRIPTION	OP CODE	FRT
R1814	Inspect ABS Actuator	R18140	2.2 hrs.
	Inspect and Replace ABS Actuator	R18141	4.3 hrs.

AMENDMENT HISTORY

PUBLISHED DATE	REFERENCE	DESCRIPTION
December 19, 2018	NTB18-087	Original bulletin published
May 25, 2021	NTB18-087A	Changes made throughout SERVICE PROCEDURE