

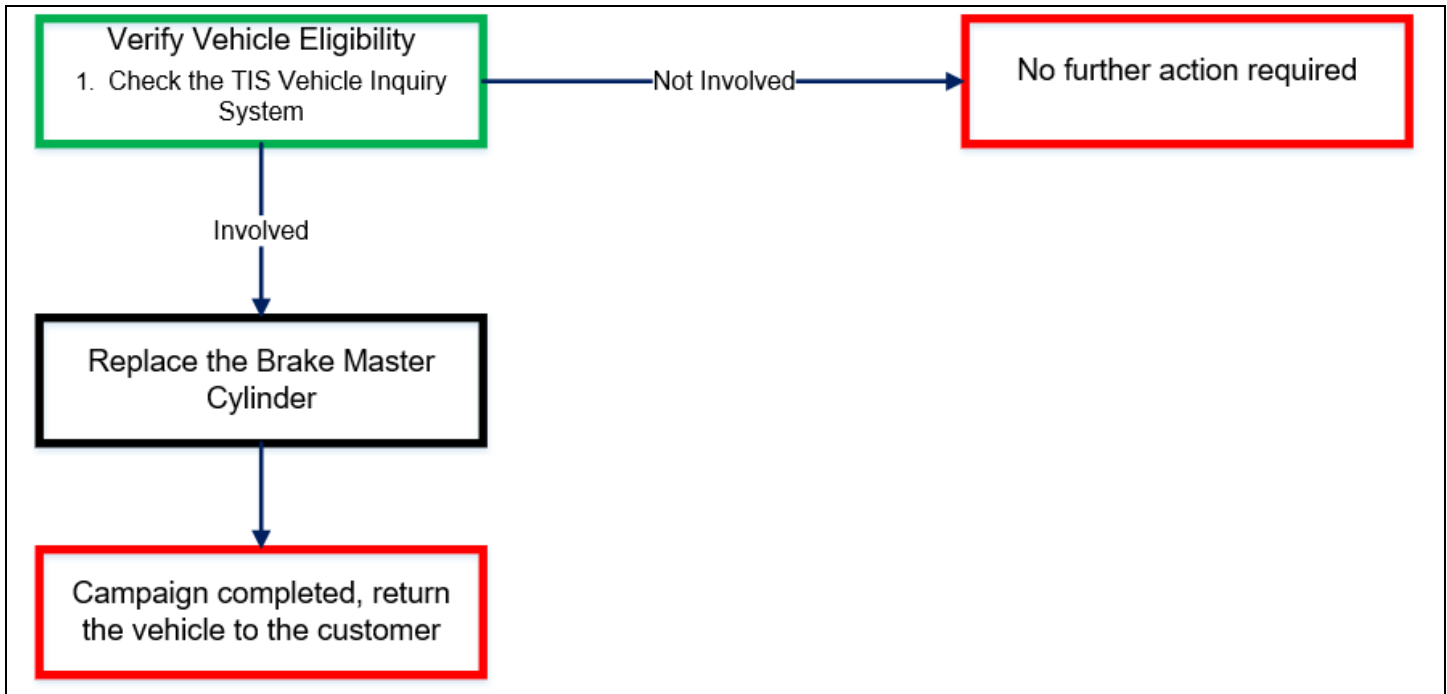
TECHNICAL INSTRUCTIONS
FOR
SAFETY RECALL J06
FRONT BRAKE PERFORMANCE COULD BE REDUCED
CERTAIN 2018 – 2019 TACOMA

The repair quality of covered vehicles is extremely important to Toyota. All dealership technicians performing this recall are required to successfully complete the most current version of the E-Learning course “Safety Recall and Service Campaign Essentials”. To ensure that all vehicles have the repair performed correctly; technicians performing this recall repair are required to currently hold at least one of the following certification levels:

- Certified Technician (Chassis)
- Expert Technician (Chassis)
- Master Technician
- Master Diagnostic Technician

It is the dealership’s responsibility to select technicians with the above certification level or greater to perform this recall repair. Carefully review your resources, the technician skill level, and ability before assigning technicians to this repair. It is important to consider technician days off and vacation schedules to ensure there are properly trained technicians available to perform this repair at all times.

I. OPERATION FLOW CHART



II. IDENTIFICATION OF AFFECTED VEHICLES

- Check the TIS Vehicle Inquiry System to confirm the VIN is involved in this Safety Recall, and that it has not already been completed prior to dealer shipment or by another dealer.
- TMS warranty will not reimburse dealers for repairs completed on vehicles that are not affected or were completed by another dealer.

III. PREPARATION

A. PARTS

Part Number	Part Description	Quantity
04008-56104	Brake Master Cylinder Sub-Assembly (FOR MT)	1
04008-56204	Brake Master Cylinder Sub-Assembly (FOR AT)	1

B. TOOLS & EQUIPMENT

- Techstream
- Standard Hand Tools
- Torque Wrench
- 12mm Union Nut Wrench
- Plastic Bag
- Vinyl Tube
- Paper Towels
- Protective Glasses

SST - This is essential special service tools that the dealership should have.

Part Number	Part Name	Quantity
09737-00020	Brake Booster Push Rod Wrench	1

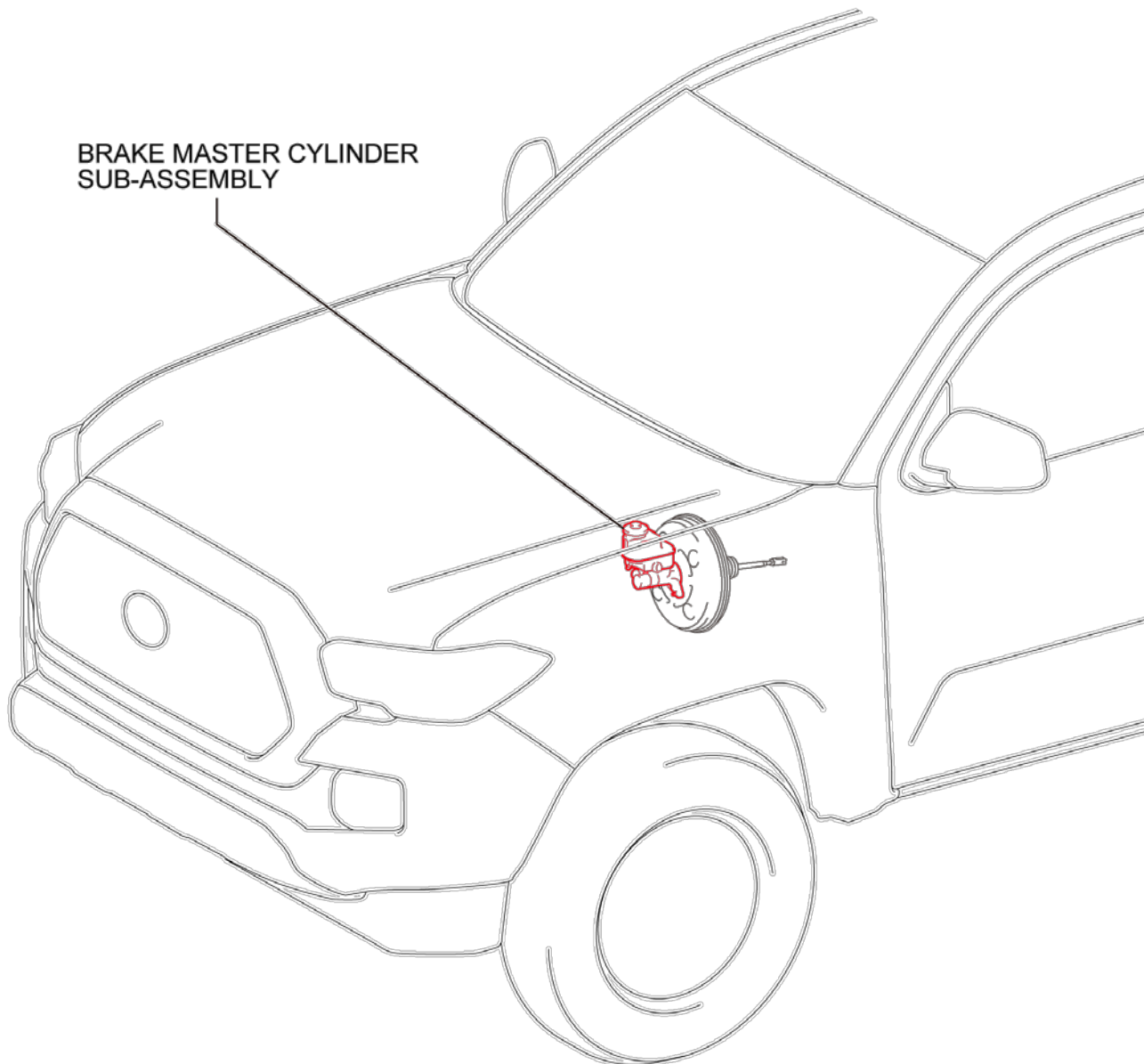
C. MATERIALS

- Protective Tape
- Marker Pen
- Brake Fluid = SAE J1703 or FMVSS No.116 DOT3 – QTY 3*

*00475-1BF03 is one 12 ounce can of brake fluid and the repair will take slightly under 36 ounces of brake fluid. Therefore, 3 cans are needed per repair.

IV. BACKGROUND

Due to improper manufacturing processes by a part supplier, a seal in certain brake master cylinders may become damaged over time and leak brake fluid internally. The brake pedal feel could change, and front brake performance could be suddenly reduced. This could result in increased vehicle stopping distance and may increase the risk of a crash



C388467

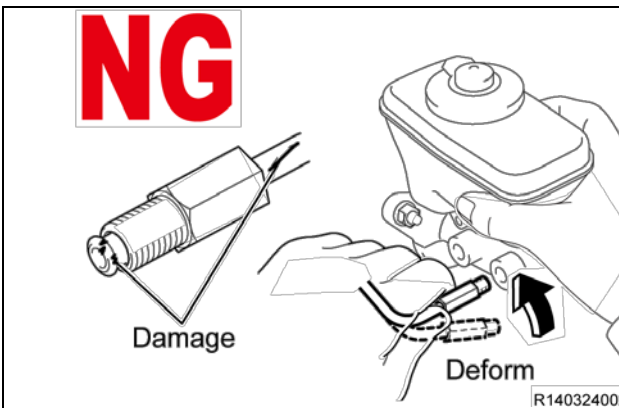
V. SAFETY PRECAUTIONS

A. PRECAUTIONS FOR BRAKE MASTER CYLINDER REMOVAL/INSTALLATION



1. BANNING THE USE OF PRODUCTS MADE OF FABRIC

- DO NOT** use shop cloths or gloves made of cloth for disassembly work of the brake master cylinder, or lint may enter the brake master cylinder.
- Perform work with clean hands, taking care to prevent intrusion of foreign matters.



2. HANDLING OF BRAKE TUBES

- DO NOT** deform or damage brake tubes when removal/installation.

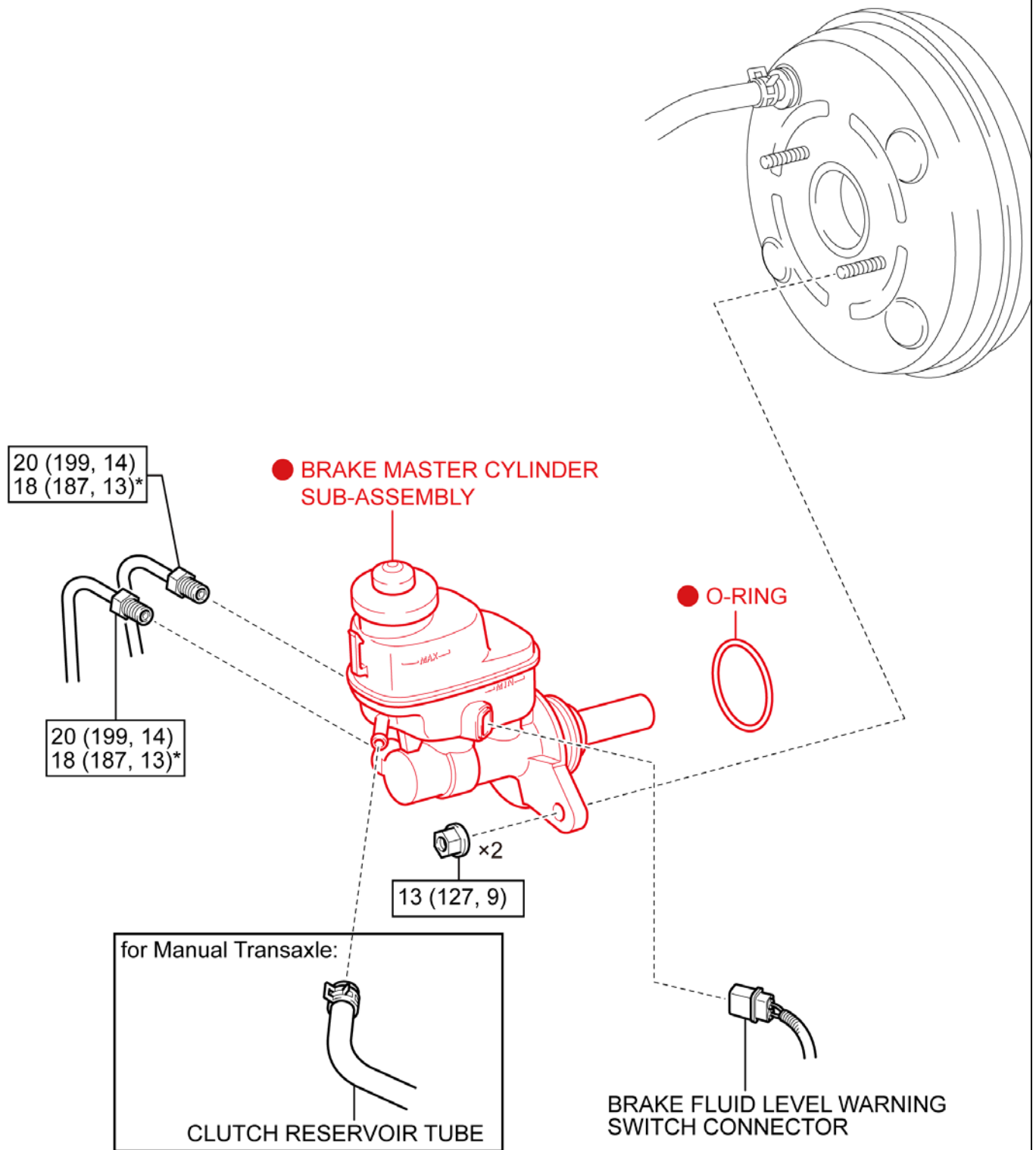


3. HANDLING OF BRAKE FLUID

- DO NOT** reuse brake fluid. Brake fluid which has absorbed moisture or mineral oil may significantly lose its quality or deteriorate rubber seals, resulting in a serious failure which can cause an accident.

VI. WORK PROCEDURE

A. COMPONENTS



● : Replacement part

N*m (kgf*cm, ft.*lbf) : Specified torque

* For use with union nut wrench

1. REMOVE BRAKE MASTER CYLINDER

[Refer to TIS for instructions on BRAKE MASTER CYLINDER / REMOVAL](#)

2. INSTALL **NEW** BRAKE MASTER CYLINDER

[Refer to TIS for instructions on BRAKE MASTER CYLINDER / INSTALLATION](#)

◀ VERIFY REPAIR QUALITY ▶

- Confirm master cylinder has been properly bled
- Confirm all brake lines have been bled
- Confirm the brake actuator has been bled
- Confirm there are no brake fluid leaks
- Confirm fluid level in reservoir
- Confirm brake pedal height, free play and pedal reserve distance

If you have any questions regarding this update, please contact your regional representative.

VII. APPENDIX

A. PARTS DISPOSAL

As required by Federal Regulations, please make sure all recalled parts (original parts) removed from the vehicle are disposed of in a manner in which they will not be reused, ***unless requested for parts recovery return.***

B. CAMPAIGN DESIGNATION DECORDER

