

## RECALL #18E098 SERVICE REPAIR PROCEDURE #1801-0017

REV		ECN	REVISION HISTORY	DATE	DRN BY
A		CM0697	PRELIMINARY	11/1/2018	ALN

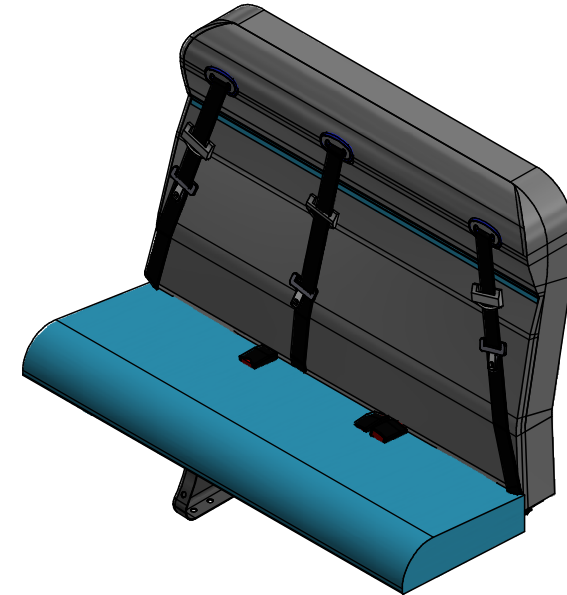
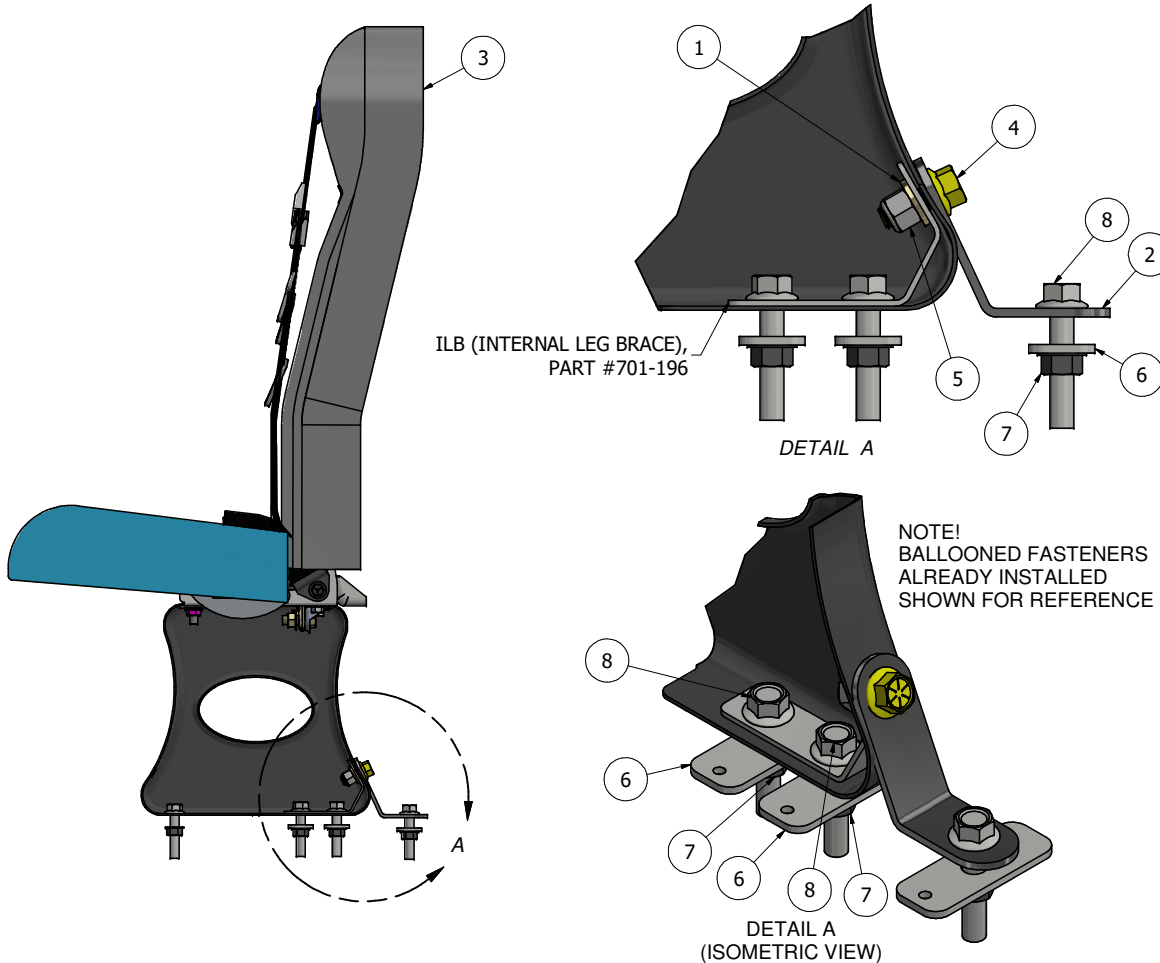
### PARTS/ITEMS NEEDED:

- PART #701-127, (QTY 1): SHORT STRAP
- PART #102-593, (QTY 1) : REINFORCEMENT PLATE
- PART #603502033, (QTY 1): BOLT, HEX FLANGE HEAD 1/2-13 x 1.25 GD.8
- PART #603504033, (QTY 1): BOLT, HEX FLANGE HEAD 1/2-13 x 2.50 GD.8
- PART #600-588, (QTY 1): NUT, FLANGE 1/2-13 GR.5
- POWER DRILL

### INSTRUCTIONS:

- IDENTIFY 3PT 45" SEATS THAT ARE IN NEED OF FIX.
- LOOSEN FASTENERS AT BACK OF LEG & ILB (INTERNAL LEG BRACE). (SEE DETAIL A)
- ADD SHORT STRAP, PART #701-127 TO BACK OF LEG. (SEE DETAIL A)
- INSTALL FASTENER PART #603502033 BOLT 1.25" LENGTH & EXISTING FASTENERS (WASHER, 600-327 & NUT, 682500022) THROUGH SHORT STRAP, BACK OF LEG & ILB. (SEE DETAIL A)
- PREDRILL HOLE THROUGH BOTTOM OF SHORT STRAP HOLE, PART #701-127. IF HOLE GOES THROUGH CROSSMEMBER, SEE INSTRUCTIONS 5A - 5C.
- INSTALL FASTENER PARTS, BOLT #603504033 & NUT #600-588 & PLATE #102-593 THROUGH BOTTOM OF SHORT STRAP. (SEE DETAIL A)
- ASSURE FASTENERS ARE TIGHTED TO TORQUE REQUIRMENTS AND ALL STEPS HAVE BEEN TAKEN.

NOTE: FASTENER TORQUE REQUIREMENTS: 40 - 60 FT. LBS



8	603504033	4	SCREW, HEX FLANGE HD, 1/2-13 X 2.5 YZ GR8
7	600-588	4	NUT, SERR. FLANGE 1/2-13 GR 5 CZ
6	102-593	3	PLATE, RECT. REINFORCEMENT, BELOW FLOOR
5	682500022	1	NUT, NYLOC 1/2-13, GD.5 CZ
4	603502033	1	BOLT, HEX FLANGE 1/2-13 1.25, GD.8 YZ
3	036245LXX197-02	1	NEXT GEN, 3PT 45" LH, WM FM
2	701-127	1	BRKT, SHORT STRAP
1	600-327	1	WASHER, FLAT 1/2 SAE GD8, YZ
ITEM	PART NUMBER	QTY	DESCRIPTION

### PARTS LIST

THIS DRAWING AND THE CONTENTS ARE THE PROPERTY OF THE C.E. WHITE COMPANY. ANY USE OR COPY OF THE DATA CONTAINED ON THIS DRAWING, PHYSICAL OR ELECTRONIC, WITHOUT THE EXPRESSED WRITTEN PERMISSION FROM THE C.E. WHITE CO. IS PROHIBITED.



The C.E. White Co.  
New Washington, Ohio 44854  
417 Kibler St., P.O. Box 308  
ph 419.492.2157 fax 419.492.2544  
www.cewhite.com

THIRD ANGLE	TOLERANCES UNLESS OTHERWISE SPECIFIED	DESCRIPTION INS.NEXTGEN 3PT 45 SHORT STRAP ADDITION FIELD FIX	SCALE
	DIAMETER 0-.500 +.010 -.005 .501+ +.012 -.006	SOFT GOODS ±.12 SEAT ASSEMBLIES ±.36	
WEIGHT/LBS 94.2 lbmass	REF USED ON:	SIZE C	DATE: 11/1/2018
MATERIAL SPEC:	FINISH SPEC:	CHK/APPR BY: alnims TAR 8/20/18	DATE: 11/1/2018
		PART NUMBER INS-179	SHEET 1 of 1
			REV A