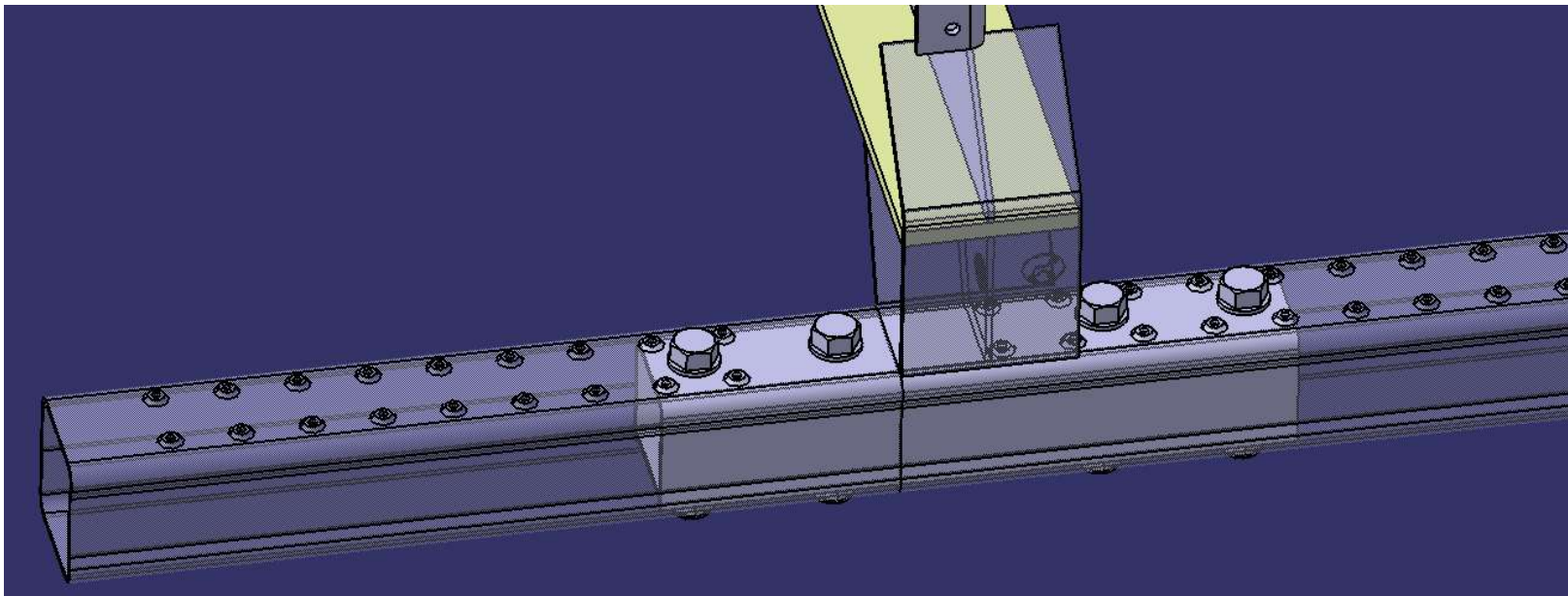




RIG tube extension

1



Great Dane Engineering
November 2018

Great Dane



Parts List:

- (1) 31700817, RIG TUBE EXTN RS
- (1) 31700818, RIG TUBE EXTN CS
- (4) 42200110, CPSCW,HH NC ZN PL .75-10X5.25
- (8) 42201009, WSHR,FLT .75 ZN
- (4) 42200957, NUT,LK N-NLN HH NC ZN .75-10
- (1) 42102725, TAPE,CONSP RFLX 18521

Tools needed:

- Pneumatic or electric driver
- 0.781" drill bit
- 1 1/8" socket



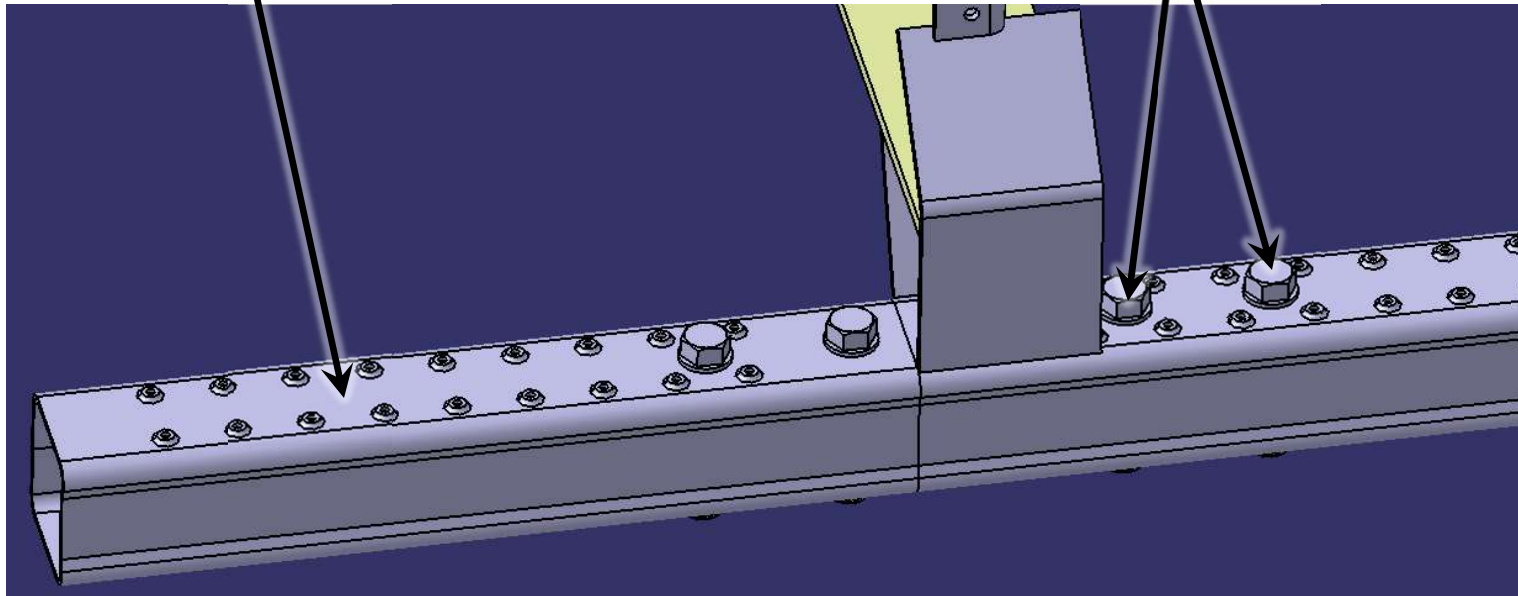
Installing RIG tube extension

3

- Position RIG tube extension 31700817 into RS of existing RIG tube, with faces flush.
- Drill 0.781" holes for bolts at location noted below.
- Place 0.75" grade 8 bolts 42200110 and torque to 75 ft-lbs
- Repeat steps for CS extension 31700818

31700817 RS extension shown

Position bolts 4" apart and 1" from upright, centered front to rear

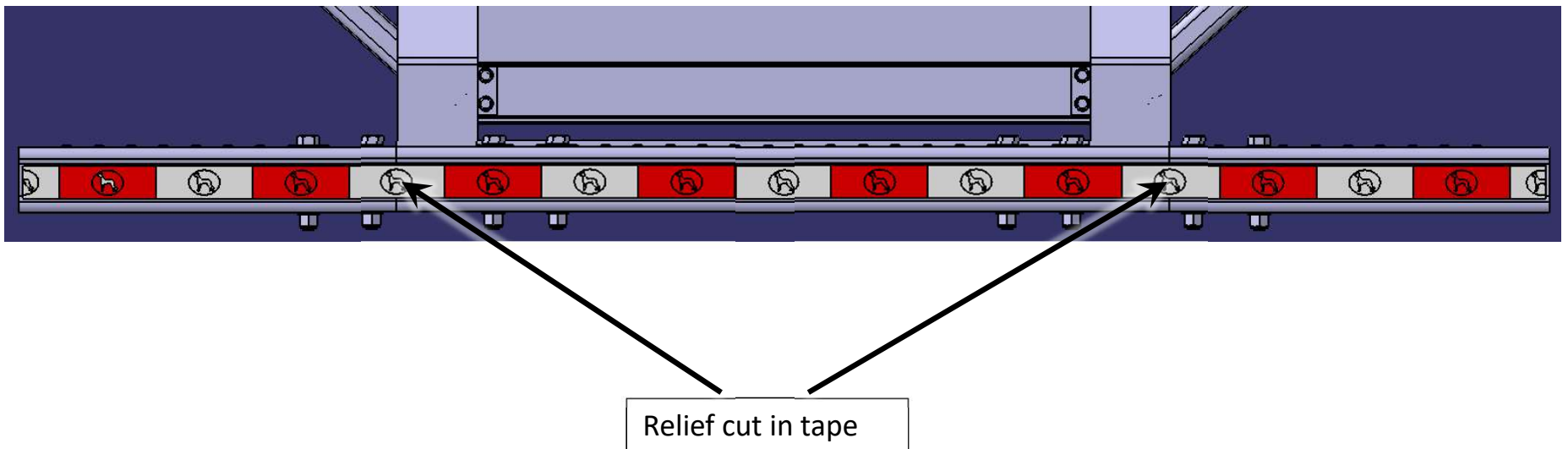


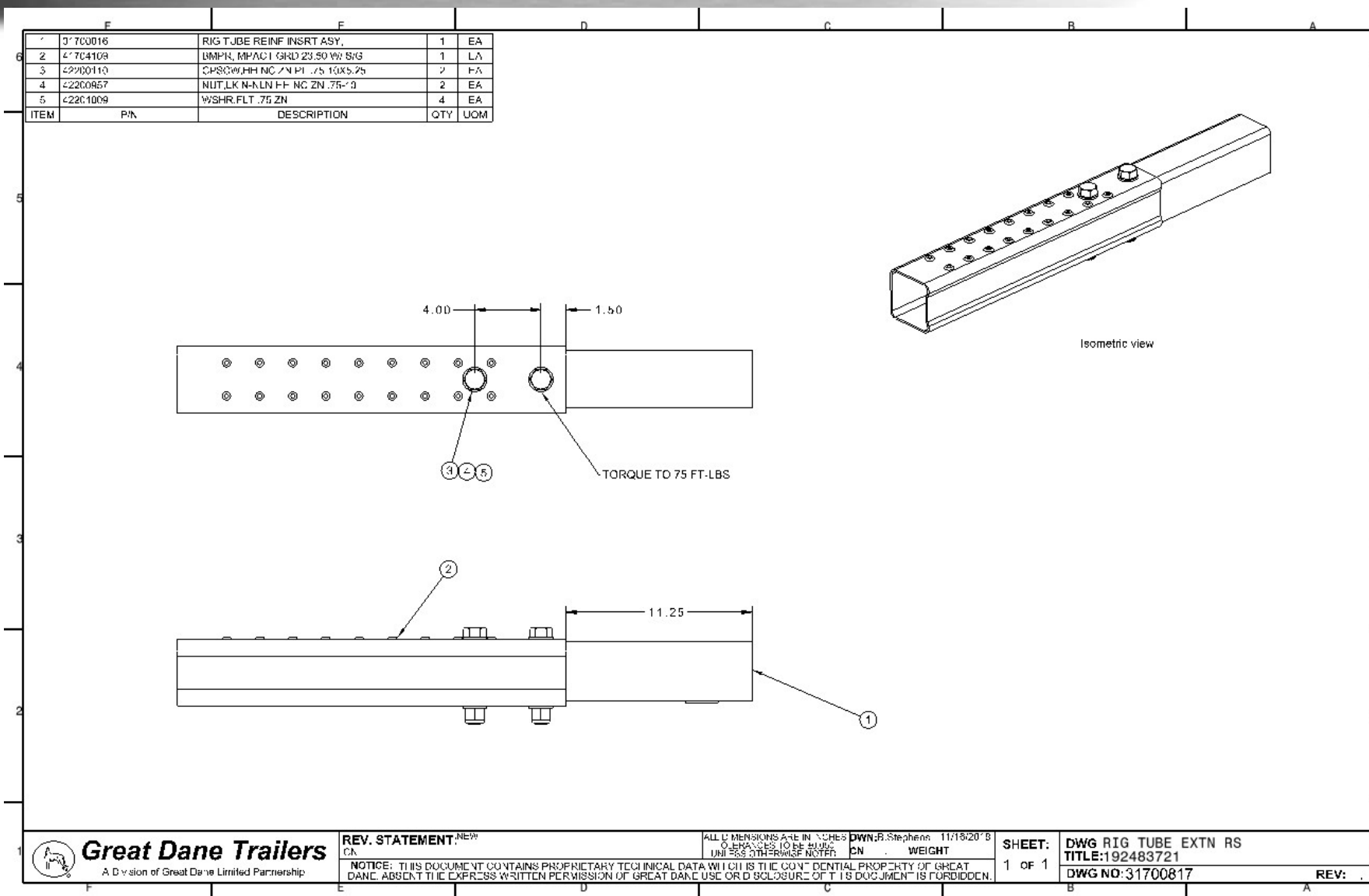


Installing Conspicuity tape

4

- With 31700817 and 31700818 extension bolted in place, remove existing conspicuity tape from original RIG tube section.
- Place full width tape 42102725 along the width of the newly extended RIG bumper
 - Make a relief cut full height of the tape at the tube extension edges.





Great Dane Trailers
A Division of Great Dane Limited Partnership

REV. STATEMENT
CA

NOTICE: THIS DOCUMENT CONTAINS PROPRIETARY TECHNICAL DATA WHICH IS THE CONFIDENTIAL PROPERTY OF GREAT DANE. ABSENT THE EXPRESS WRITTEN PERMISSION OF GREAT DANE, USE OR DISCLOSURE OF THIS DOCUMENT IS FORBIDDEN.

ALL DIMENSIONS ARE IN INCHES
UNLESS OTHERWISE NOTED

DWN:B.Stephens 11/15/2018
CN WEIGHT

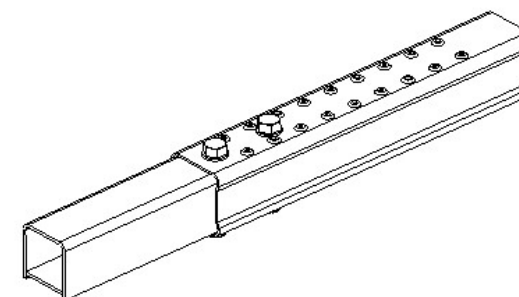
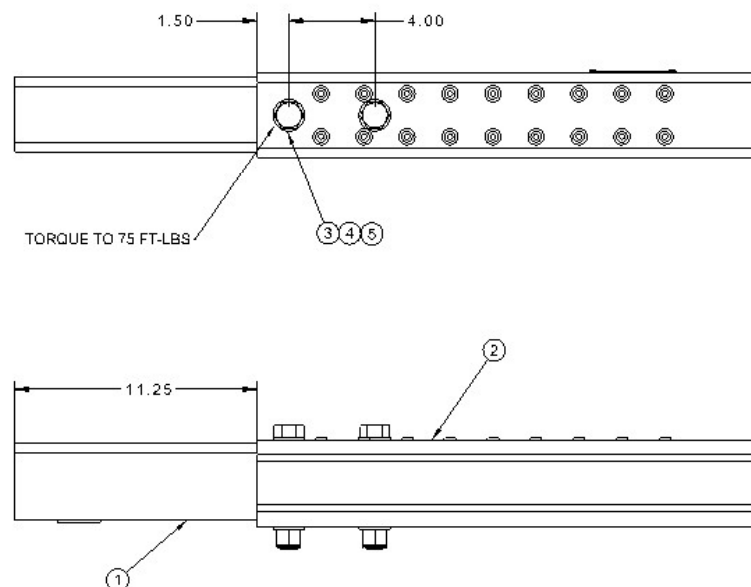
SHEET:
1 OF 1

DWG RIG TUBE EXTN RS
TITLE:192483721
DWG NO:31700817

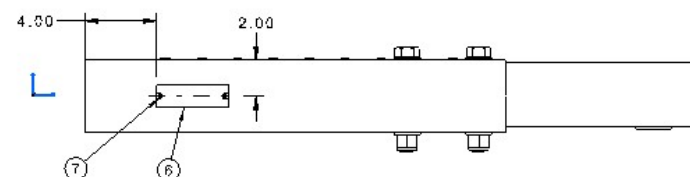
REV:



ITEM	P/N	DESCRIPTION	QTY	UOM
1	31700818	RIG TUBE REINF INSERT ASY.	1	EA
2	41704109	DMPR, IMPACT GRD 23.50 W/ 8/G	1	EA
3	42200110	CPSCW, H-1 NC 7N PL .75-11X5.75	2	EA
4	42200957	NUT, LK N-NLN HH NC ZN .75-11	2	EA
5	42201009	WSHR, FLT .75 ZN	4	EA
6	42100247	PLT, COMPI NC 11G 1.25X4.00	1	EA
7	42204205	RVT, AL, AVDEL 01604-00619 BLIND	2	EA



Isometric view



Great Dane Trailers
A Division of Great Dane Limited Partnership

REV. STATEMENT:

NEW

DATE: 11/19/2018

BY: B. Stephens

NOTICE: THIS DOCUMENT CONTAINS PROPRIETARY TECHNICAL DATA WHICH IS THE CONFIDENTIAL PROPERTY OF GREAT DANE. ABSENT THE EXPRESS WRITTEN PERMISSION OF GREAT DANE, USE OR DISCLOSURE OF THIS DOCUMENT IS FORBIDDEN.

ALL DIMENSIONS ARE IN INCHES

UNLESS OTHERWISE NOTED

WEIGHT

DATE: 11/19/2018

BY: B. Stephens

SHEET:

1 OF 1

DWG RIG TUBE EXTN CS

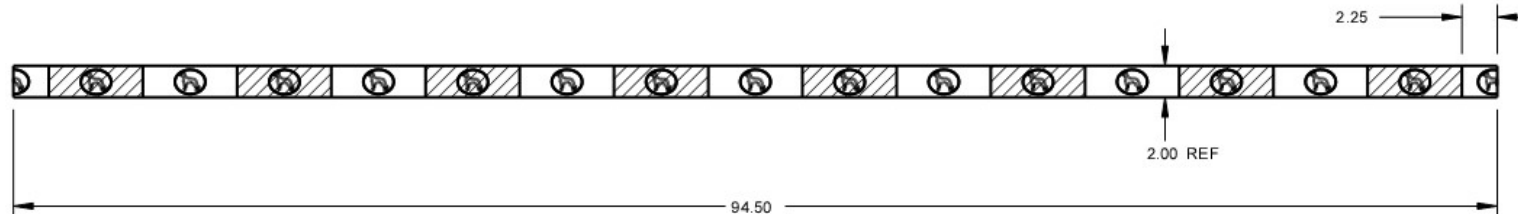
TITLE: 192483721

DWG NO: 31700818

REV:



REV	DWG NO: 42102725	DATE	BY
A.	REVISED THE VENDOR ID, 18521 WAS L02-56GD-044EA.	04/13/2011 CN 20-1477	JW




NOTES:

1. SHEETING TO MEET THE SPECIFICATION OF FFMVSS 108.
2. SHEETING MUST BE MARKED DOT-C2.
3. SHEETING IS TO BE 2.00 X 6.00 AND 6.00 PATTERN.
4. SHEETING TO BE APPLIED TO A SMOOTH, CLEAN, DRY SURFACE AT TEMPERATURES RANGING FROM 50-100°F.
5. LOGO TO APPEAR IN BOTH RED AND WHITE SECTIONS.
6. HATCHED AREA REPRESENTS RED COLOR.

VENDOR:	REFLEXITE
VENDOR ID:	18521
CONSPICUITY MATERIAL:	Reflexite V82 DOT
COLOR:	WHITE/RED WITH LOGO

MATERIAL: PLASTIC

 Great Dane Trailers A Division of Great Dane Limited Partnership	ALL DIMENSIONS ARE IN INCHES.		CN 20-723 WEIGHT 0.2581b	DWG TITLE: TAPE, CONSP RFLX 18521 2.00X94.50 WHT/RED W/LOGO V-82
	DWN:	CHK:		
TOLERANCES TO BE ±0.050 UNLESS OTHERWISE NOTED.	NOTICE: THIS DOCUMENT CONTAINS PROPRIETARY TECHNICAL DATA WHICH IS THE CONFIDENTIAL PROPERTY OF GREAT DANE. ABSENT THE EXPRESS WRITTEN PERMISSION OF GREAT DANE USE OR DISCLOSURE OF THIS DOCUMENT IS FORBIDDEN.			SHEET: 1 OF 1
DWG NO: 42102725 REV: A.				