

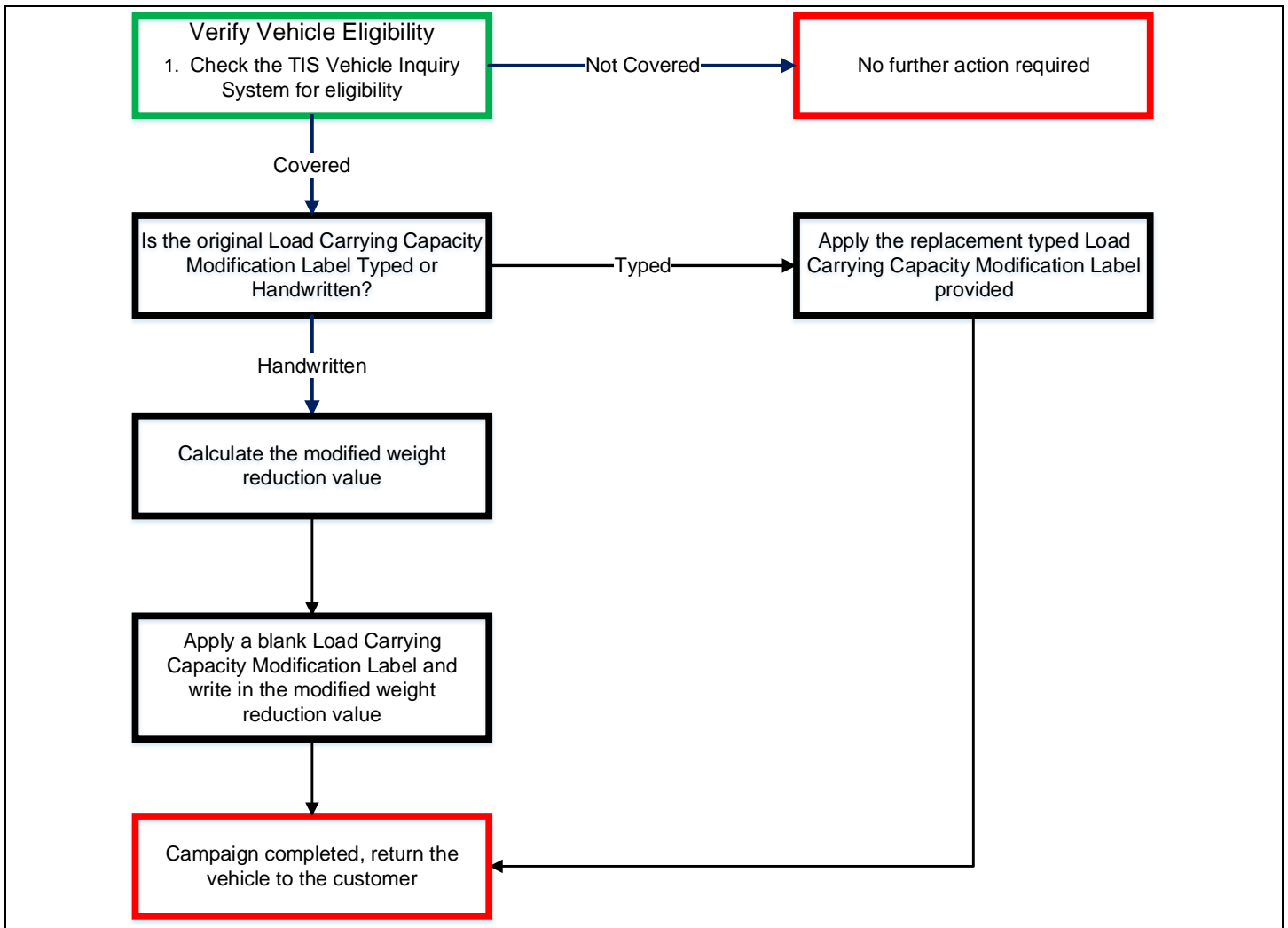
TECHNICAL INSTRUCTIONS
FOR
SAFETY (NONCOMPLIANCE) RECALL J0Z
LOAD CARRYING CAPACITY MODIFICATION LABEL
CERTAIN 2018-2019 TUNDRA Vehicles

The repair quality of covered vehicles is extremely important to Toyota. All dealership technicians performing this recall are required to successfully complete the most current version of the E-Learning course “Safety Recall and Service Campaign Essentials”. To ensure that all vehicles have the repair performed correctly; technicians performing this recall repair are required to currently hold at least one of the following certification levels:

- Certified Technician (any classification)
- Expert Technician (any classification)
- Master Technician
- Master Diagnostic Technician

It is the dealership’s responsibility to select technicians with the above certification level or greater to perform this recall repair. Carefully review your resources, the technician skill level, and ability before assigning technicians to this repair. It is important to consider technician days off and vacation schedules to ensure there are properly trained technicians available to perform this repair at all times.

I. OPERATION FLOW CHART



II. IDENTIFICATION OF AFFECTED VEHICLES

- Check the TIS Vehicle Inquiry System to confirm the VIN is involved in this Safety (Noncompliance) Recall, and that it has not already been completed prior to dealer shipment or by another dealer.
- TMS warranty will not reimburse dealers for repairs completed on vehicles that are not affected or were completed by another dealer.

III. PREPARATION

A. PARTS

The replacement AWR labels are specific to each vehicle. For in stock units, the labels will be mailed directly to the attention of the Service Manager at the dealership. Each label will have the VIN numbers printed on them for identification. It is critical that the label be applied to the correct vehicle.

However, in some cases a replacement label will need to be ordered to accommodate the changes to the vehicle weight for dealer installed accessories. The instruction below will determine if dealer installed accessories were applied. If required a blank label can be ordered from the Material Distribution Center (MDC).

Part Number	Part Description	Quantity
00107-FMVSS	Load Carrying Capacity Modification Label	1

Note: Labels are sold in packs of 25 from the MDC.

IV. BACKGROUND

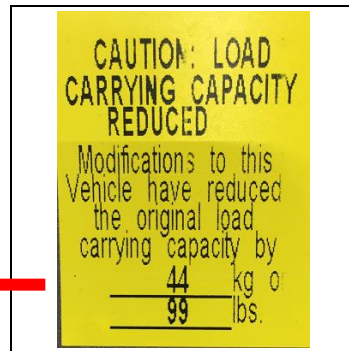
The involved vehicles received a load carrying capacity modification label indicating an added weight greater than the actual total weight of accessories installed. As a result, the subject vehicles do not meet a requirement of FMVSS No. 110.



V. WORK PROCEDURE



1. **LOCATE THE LOAD CARRYING CAPACITY LABEL**
 - a. The yellow load carrying capacity label will be located on the B-Pillar, inside the driver's door.



Note: The location picture on the left is an example only. The exact location will vary slightly by model.



2. **IDENTIFY TYPE OF LABEL**
 - a. Determine if the weight reduction amount on the label is **PRINTED** or **HANDWRITTEN**

Handwritten: Dealer installed accessories were installed, proceed to step 4.

Printed: Vehicle is only equipped with factory accessories, proceed to step 3.



3. APPLICATION OF PRINTED LABEL

- a. Clean the surface of the original label with a dry cloth.
- b. Apply the new preprinted label for your VIN directly over the top of the original label and ensure only new label can be read.

Note: Customers were mailed labels for them to apply themselves, but they may come into the dealership asking for assistance.

- c. Confirm the label is properly adhered.

Safety Recall is now completed for vehicles equipped with factory only accessories.



4. CALCULATE UPDATED WEIGHT REDUCTION RATING TO INCLUDE DEALER INSTALLED ACCESSORIES

- a. Vehicles that have dealer installed accessories will need to have the Load Carrying Capacity Reduction recalculated, and a new label created. These can be identified by the handwritten Load Carrying Capacity label.

Note: Customers were mailed labels for them to apply themselves, but they may come into the dealership asking for assistance.

b. Search the VIN on TIS to determine which accessories were factory installed.

Vehicle Identification Number Search

Enter a 17 Digit VIN below to search for applicable information:

VIN:

Vehicle Information

Division: TOYOTA	Model: Tundra	Grade: SR5	Model Year: 2018
Drive Type: 4WD	Body Type: Crew Max	Engine Family: Large V8 - 3UR-FE	Engine No: 3UR 6323902
Date of First Use:	Production Date: 11/30/2017	Plant Code: T - SAN ANTONIO - TMMTX	Transmission: 6AT

VIN: STF-DYSF1-5JX709653 Dest: USA [Electronic Parts Catalog](#) [Fluids](#) [Flat Rate Manual](#) [Standard Equipment \[+\]](#)

Exterior Color: 01HS, CEMENT Interior Color: FB20, BLACK Interior Trim Color: FB, FABRIC Interior Fabric: *, *

Accessories:

2M: TRD ORP CARPET FLOOR MATS **2T:** All Weather Liners/Door Sill **63:** All Weather Floor Liners **D9:** Door Sill Protector **EE:** Entune Premium Audio with Integrated **FE:** 50 State Emissions **OF:** TRD Off-Road Package: **RZ:** Tube Step - Black **SP:** SR5 Upgrade Package: **WI:** Spare Tire Lock

c. Identify the dealer installed accessories and lookup the change weight in the accessories sales guide (ASG) website.

Accessory Sales Guide: <https://www.toyotaasg.com/>

Note:

- Login info is your dealer code and region code.
- Not all accessories installed at the dealer maybe Toyota, in these cases the ASG guide will not have the weight change value.

ACCESSORIES SALES GUIDE

Dashboard | **Products** | Sales | Marketing

Keyword or Part No.

Browse Products | Carry-Over Report | Export Wizard | Change Tracker

Showing result for PT580-34070-SB : Bed Mat - Short

Attribute	Value	Parts Required
Bed Type	Short	-
Logo	Tundra	Substitute Parts
		-

Showing 197 records for Part PT580-34070-SB

Series	Year	Model Code	Change Weight	Conflicts	Requirements	Labor Time		PPG Code/ PPG MSRP
						PPG	Warranty	
Tundra	2007	8270-LTDCREWVS2WD	37.5 lbs	-	-	0.15	0.1	CJ / \$127.00
Tundra	2008	8270-LTDCREWVS2WD	37.5 lbs	-	-	0.15	0.1	CJ / \$127.00
Tundra	2009	8270-LTDCREWVS2WD	37.5 lbs	-	-	-	0.1	-

Toyota Provided Label



NEW LABEL



d. Calculate the NEW weight reduction rating by adding together the values from the Toyota provided label and all dealer installed accessory change weight values.

Toyota Accessories + Dealer Accessories = New Value

Example: Bed Mat and Step was Installed at Dealership

Toyota Provided Label = 32 lbs/14 kg.
 Dealer Installed Bed Mat = 37 lbs/17 kg
 Dealer Installed Bed Step = 11 lbs/5 kg

New Hand Written Label: 80 lbs/36 kg

Note: Multiply the pounds (lbs) by .453 to convert to kilograms (kg). For example, 80 x .453 = 36

e. Handwrite the NEW calculated weight reduction values onto a blank label.



- f. Clean the surface of the original label with a dry cloth.
- g. Apply the new revised label for your VIN directly over the top of the original label and ensure only new label value can be read.
- h. Confirm the label is properly adhered.
- i. Dispose of the Toyota provided printed label.

◀ VERIFY REPAIR QUALITY ▶

- Confirm the reduced weight value was calculated correctly for Dealer Installed Accessory vehicles.
- Confirm that the label is properly applied and covers the original label value
- Confirm that the label is fully adhered to the vehicle

If you have any questions regarding this update, please contact your regional representative.

VI. APPENDIX

A. PARTS DISPOSAL

As required by Federal Regulations, please make sure all recalled parts (original parts) removed from the vehicle are disposed of in a manner in which they will not be reused, ***unless requested for parts recovery return.***

B. CAMPAIGN DESIGNATION DECORDER

