

LIVIN LIGHT A FRAME SUPPORT

Parts 3x3 aluminum tube (length depends on Model), 2x4 aluminum tube 58 ½", Spare tire carrier for rear bumper, 3x3 gussets x4

A.

1. Inspect the welds around the coupler and both sides where the A frame meets the trailer frame for cracking of the welds. (refer to Diagram 2)
2. If welds are cracked (refer to Diagram 1), grind off as much of the weld as possible, make sure the area is clean and free of oxidation. Re-weld area with the following guidelines, suggest taking to certified weld shop, suggest using Radnor ER 5356 .035 weld wire, and make sure weld penetrates. If no cracking and the welds are clean continue to part B.

B.

3. Cut off spare tire carrier and smooth out the area.
4. Place 3x3 under the main center beam of the A frame starting at the bulk head(refer to diagram 2), making a vertical up weld where it meets the bulk head on both sides and a horizontal stitch weld along the main beam 3" wide every 12".
5. Place 2x4 tube behind the bumper between the tubes coming out of the frame(refer to Diagram 3) and make vertical up welds as far as possible on the sides and horizontal stitch weld 3" wide every 12".
6. Install the spare tire carrier in the center of the bumper.
7. Grind and re-weld where the A frame meets the bulk head using a vertical upweld.
8. Gussets need to be welded in place on the sides of the main tube that goes through the bulk head. The placement of the gussets are on the backside of the first cross brace, and where the tube meets the third cross member of the frame. They are to be placed at roughly a 40 degree angle.

Diagram 1.

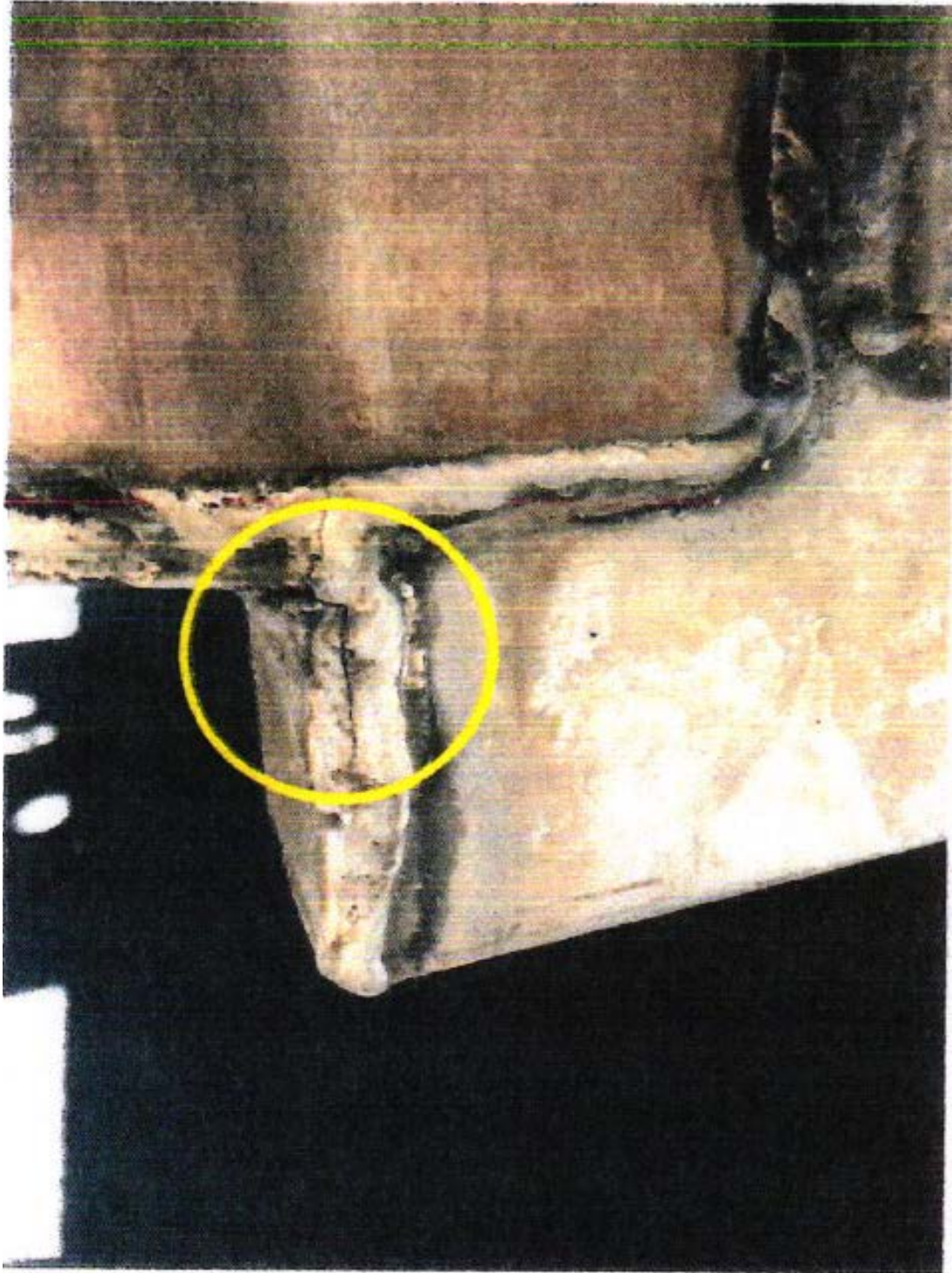


Diagram 2.

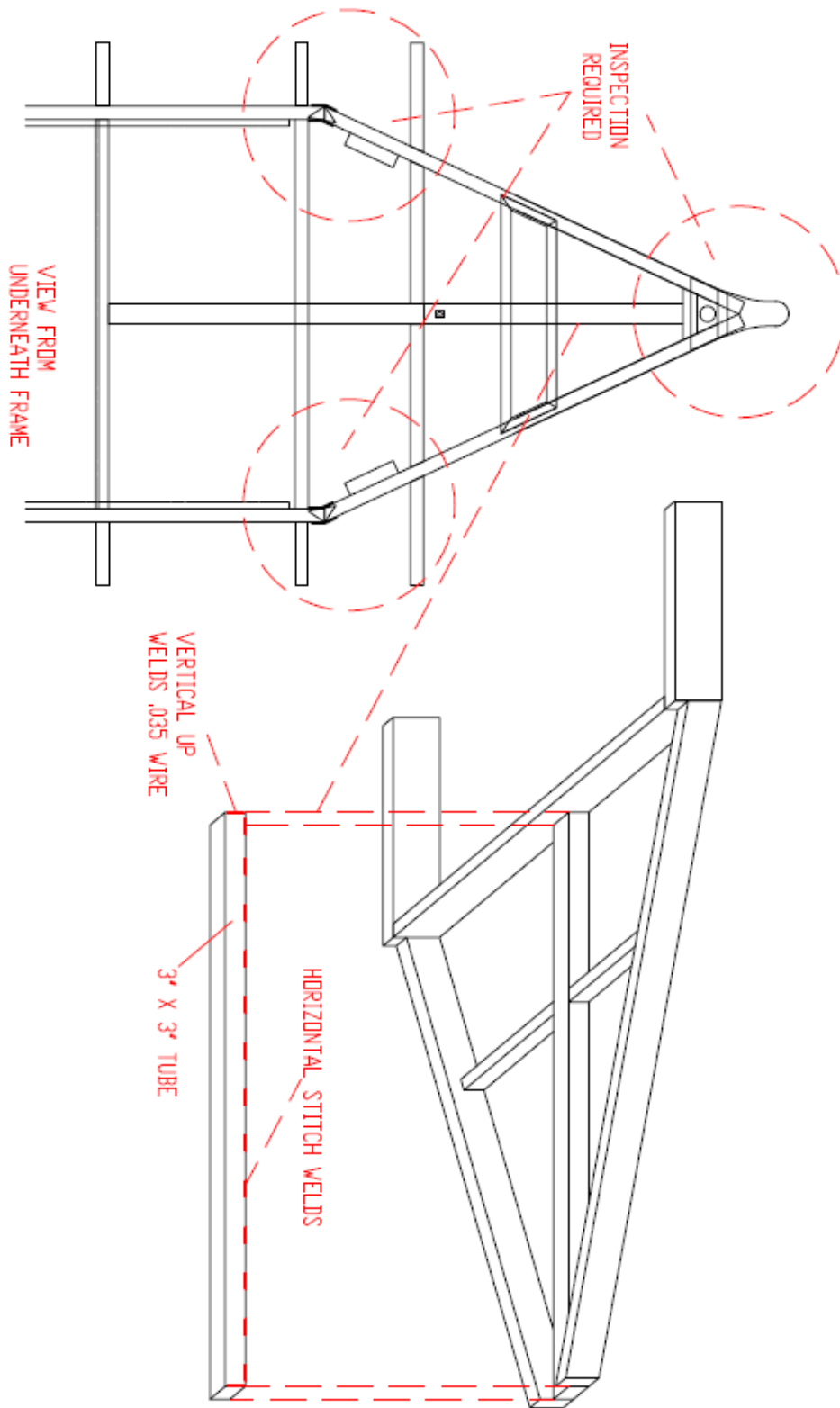


Diagram 3.

