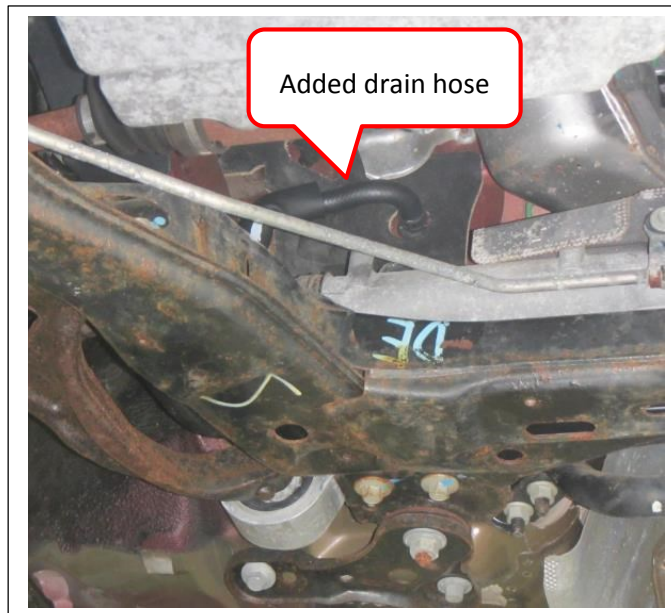


Mazda6 2009, 2010 MY: Air conditioner drain hose attachment procedure.

Component part



After attachment

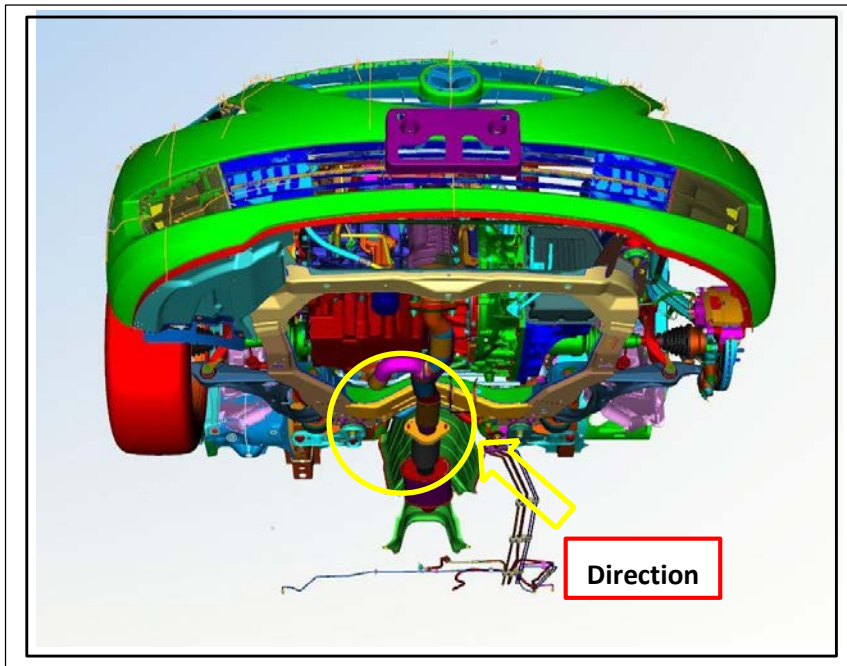


Mazda6 3.7 V6 engine

- (1) Is the Front Cross member being replaced?
 - Yes. Remove cross member and go to steps 10-13, then finish installation of the front cross member and complete step 14.
 - No, go to next step.
- (2) Follow these steps if the vehicle has passed front cross member inspection and the cavity wax and bracket has been installed or if the vehicle had a new front cross member replacement May 2018 or later.
- (3) Wait for the exhaust pipe to cool down.
- (4) Lift the vehicle up.
- (5) Remove the right front tire.
- (6) Remove visible clips of side cover of right front tire house.
Then bend the side cover so that attachment point for drain hose can be seen.
(It is difficult to see the drain port from the evaporator housing but it can be seen from underneath the vehicle.

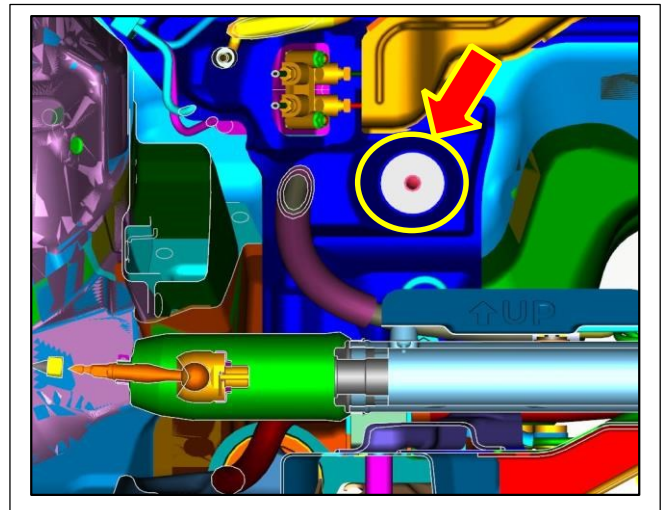
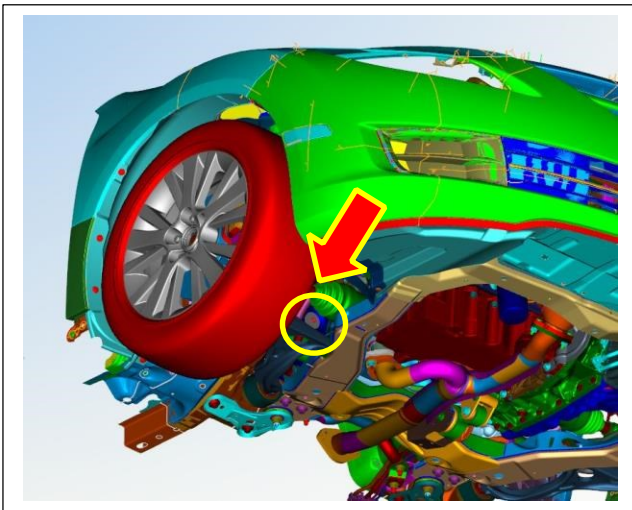


- (7) Insert the drain hose into the drain pipe from under the vehicle to the left of the exhaust pipe.
- (8) Insert hands and drain hose in the direction of the arrow.



(9) If you cannot see the insertion position, please check from the bent splash shield.

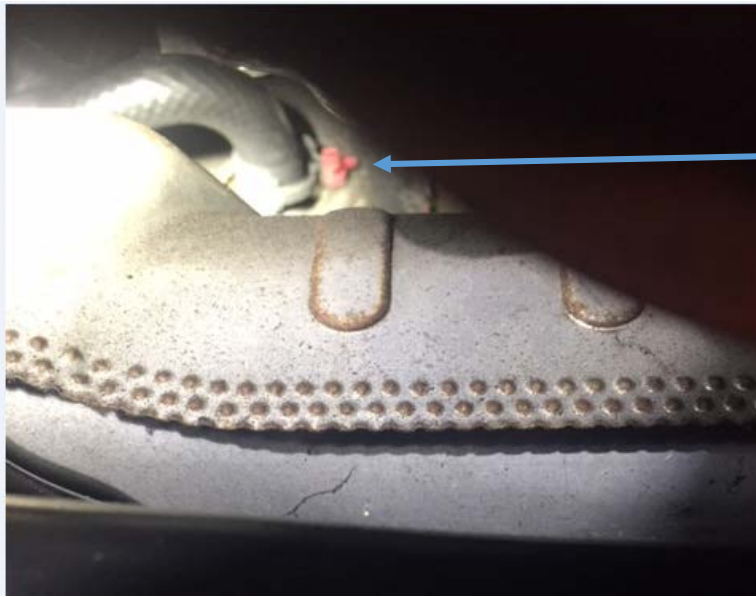
Drain pipe position to insert the drain hose



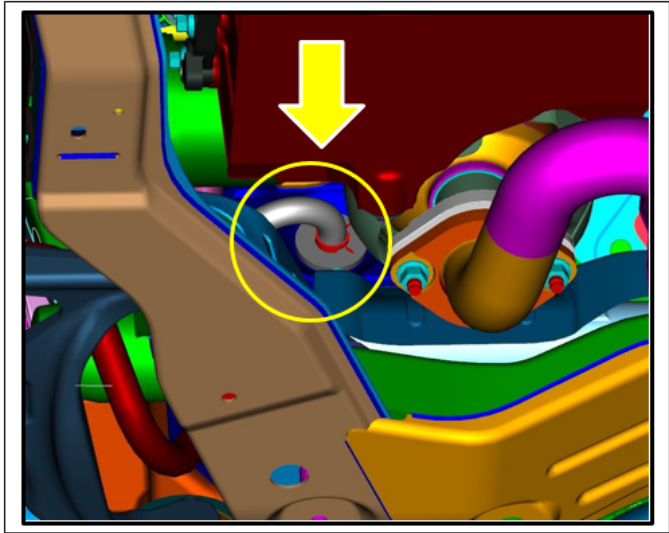
(10) Insert the drain hose firmly until it hits the back. Align the hose so the hose clamp release clip is at 3:00 position

CAUTION:

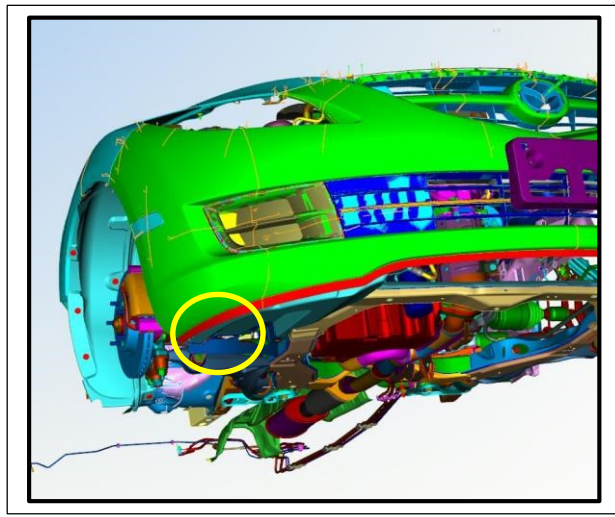
- Be careful when installing the A/C drain hose. The drain pipe will be damaged if force is applied to the drain pipe.
- Turn the hose while inserting so no force is applied in any up, down, left and right direction of the pipe. Align the hose so the hose clamp release clip is at 3:00 position



Release clip at 3:00. This properly aligns the hose so it is vertical at the drain end.



(11) Adjust the mounting angle of the drain hose.
Adjustment is performed at the position where the drain hose can be confirmed from the front of the vehicle.

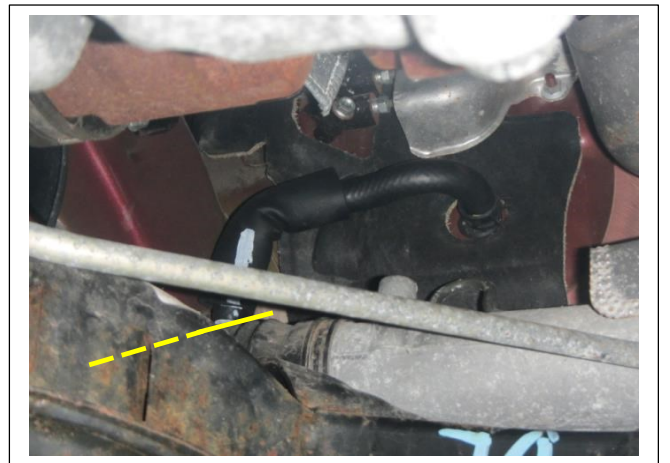
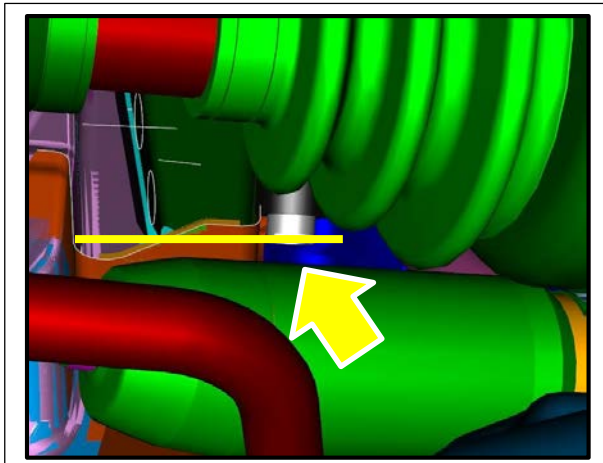


(12) Pass the drain hose behind the Power steering hose.

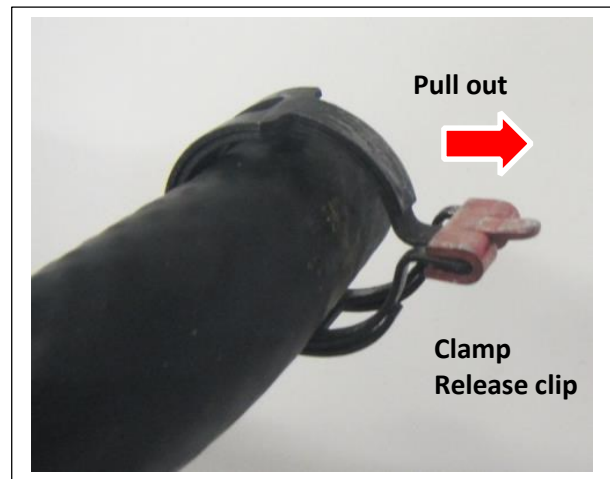
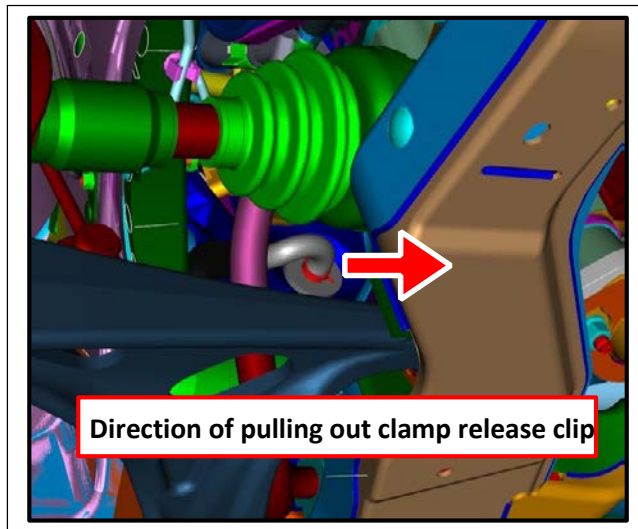
Pass the drain hose behind the Power steering hose.



Align the white marking of the drain hose and the bottom of the frame of the vehicle



(13) Pull out the clamp release clip in the direction of the arrow with plier



(14) Confirmation of drainage.

Start the engine, operate the air conditioner.

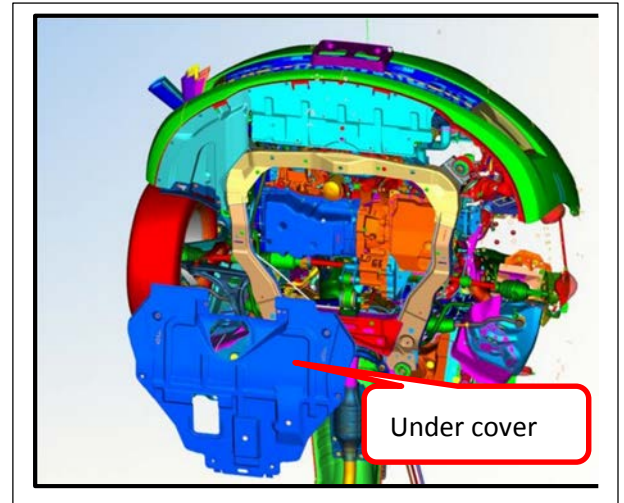
Confirm that water is drained from the drain hose.



(15) Return the side cover to its original condition and install the tire.

Mazda6 L5 Engine-2.5L: 4 cylinder engine

- (1) Is the Front Cross member being replaced?
 - Yes. Remove front cross member and go to steps 7-9, then finish installation of the front cross member and go to step 10.
 - No, go to next step
- (2) Follow these steps if the vehicle has passed front cross member inspection and the cavity wax and bracket has been installed or if the vehicle had a new front cross member replacement May 2018 or later.
- (3) Wait for the exhaust pipe to cool down.
- (4) Lift the vehicle up.
- (5) Remove the undercover* if desired. It is not necessary and will already be off during bracket and wax application. (*Under cover means Aerodynamic under cover No.2)
- (6) Insert the drain hose into the drain pipe from under the vehicle through the access hole in the undercover



Drain pipe position to insert the drain hose



- (7) Insert the drain hose firmly until it hits the back. Align the hose so the hose clamp release clip is at 3:00 Position.

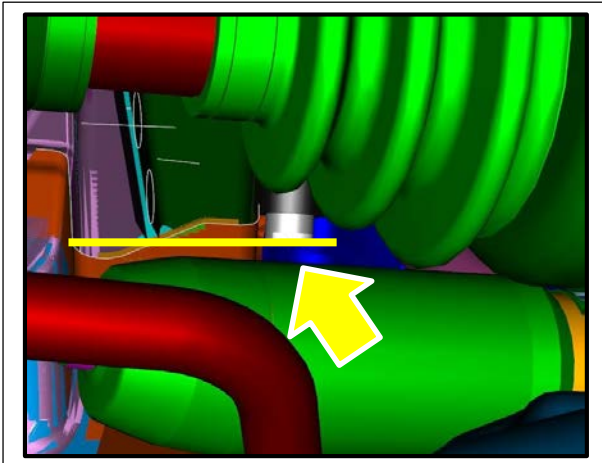
CAUTION:

- Be careful when installing the A/C drain pipe. It will be damaged if force is applied to the drain pipe.
- Turn the hose while inserting so no force is applied in any up, down, left and right direction of the pipe. Align the hose so the hose clamp release clip is at 3:00 position

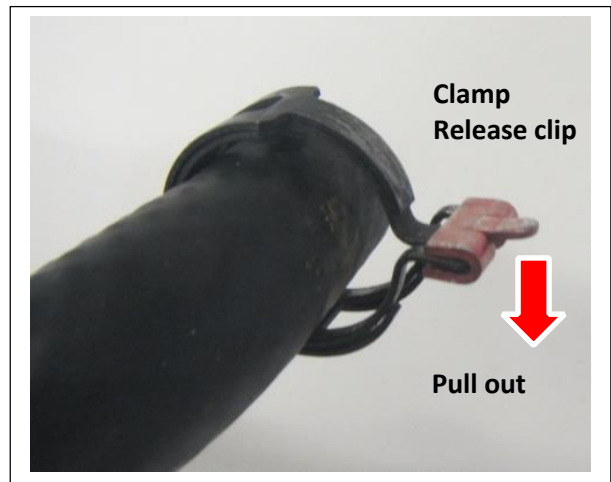
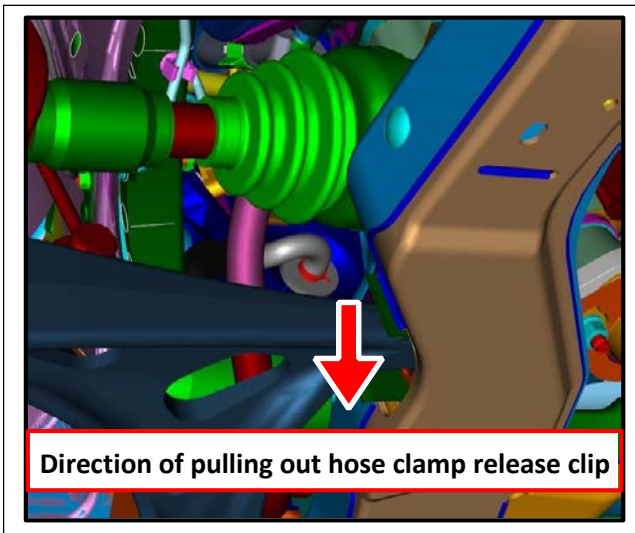


Release clip at 3:00. This properly aligns the hose so it is vertical at the drain end.

- (8) Adjust the mounting angle of the drain hose.
Align the white marking of the drain hose and the bottom of the frame of the vehicle.



- (9) Pull out the hose clamp release clip in the direction of the arrow with plier. Because there is a catalyst next to it, pull clamp holder downward.



- (10) Confirmation of drainage.
 Start the engine, operate the air conditioner.
 Confirm that water is drained from the drain hose.



- (11) Install under cover if removed.
 Tighten modified bolt by following torque.
Tightening torque: 9-10 Nm

