



RECALL CAMPAIGN BULLETIN

Classification: BR18-006	Reference: NTB18-064	Date: September 24, 2018
-----------------------------	-------------------------	-----------------------------

VOLUNTARY SAFETY RECALL CAMPAIGN 2015-2017 MURANO, 2016-2017 MAXIMA, 2017 PATHFINDER; ABS ACTUATOR

CAMPAIGN ID #: R1807
NHTSA #: 18V-601
APPLIED VEHICLES: 2016 - 2017 Maxima (A36)
2015 - 2017 Murano (Z52) – non-Hybrid
2017 Pathfinder (R52)

Check Service COMM or Dealer Business Systems (DBS) National Service History to confirm campaign eligibility.

- There are multiple bulletins with different campaign ID numbers for the ABS Actuator.
- Each bulletin is applicable to specific vehicles.
- Make sure the correct bulletin (Campaign ID #) is being used.

INTRODUCTION

Nissan is conducting a voluntary safety recall campaign on certain specific model year 2016 - 2017 Maxima, 2015 - 2017 Murano, and 2017 Pathfinder vehicles to inspect and, if necessary, replace the ABS Actuator and Electric Unit (ABS control unit). This service will be performed at no charge for parts or labor.

IDENTIFICATION NUMBER

Nissan has assigned identification number R1807 to this campaign. This number must appear on all communications and documentation of any nature dealing with this campaign.

DEALER RESPONSIBILITY

It is the dealer's responsibility to check Service COMM or Dealer Business Systems (DBS) National Service History for the campaign status on each vehicle falling within the range of this voluntary safety recall which for any reason enters the service department. This includes vehicles purchased from private parties or presented by transient (tourist) owners and vehicles in a dealer's inventory. **Federal law requires that new vehicles in dealer inventory which are the subject of a safety recall must be corrected prior to sale. Failure to do so can result in civil penalties by the National Highway Traffic Safety Administration.** While federal law applies only to new vehicles, Nissan strongly encourages dealers to correct any used vehicles in their inventory before they are retailed.

Nissan Bulletins are intended for use by qualified technicians, not 'do-it-yourselfers'. Qualified technicians are properly trained individuals who have the equipment, tools, safety instruction, and know-how to do a job properly and safely. NOTE: If you believe that a described condition may apply to a particular vehicle, DO NOT assume that it does. See your Nissan dealer to determine if this applies to your vehicle.

IMPORTANT: If there is a delay between vehicle arrival at the dealer and performance of the Service Procedure, park the vehicle outside away from other vehicles and structures, disconnect the vehicle 12 volt battery and leave it disconnected while the vehicle is parked waiting for service.

SERVICE PROCEDURE

1. Open the engine hood and locate the ABS Actuator and Electric Unit (ABS control unit).
 - The ABS control unit is on the passenger side of the engine compartment next to the engine wall.

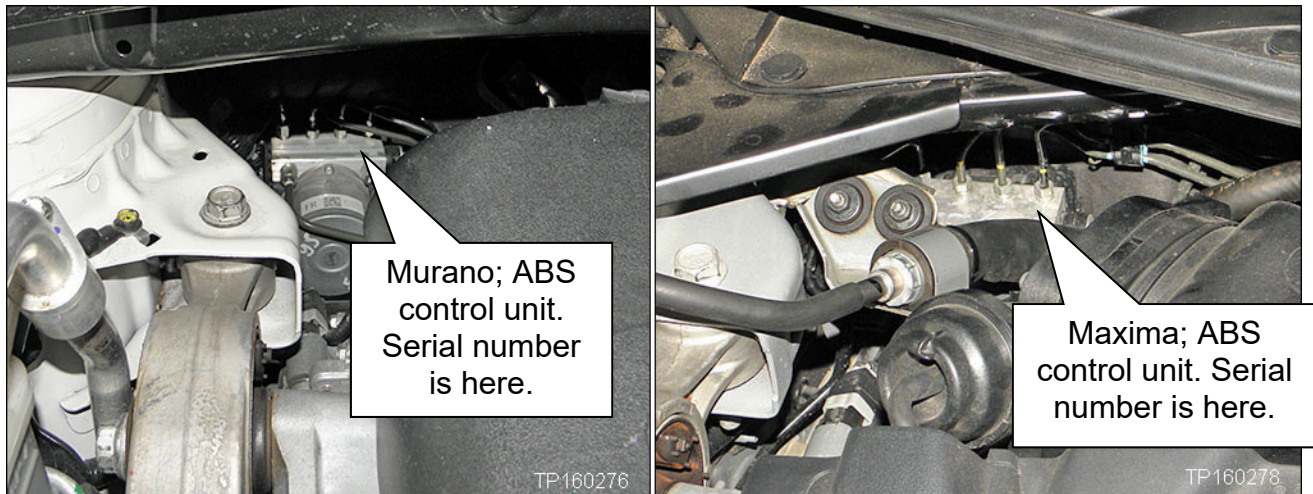


Figure 1A

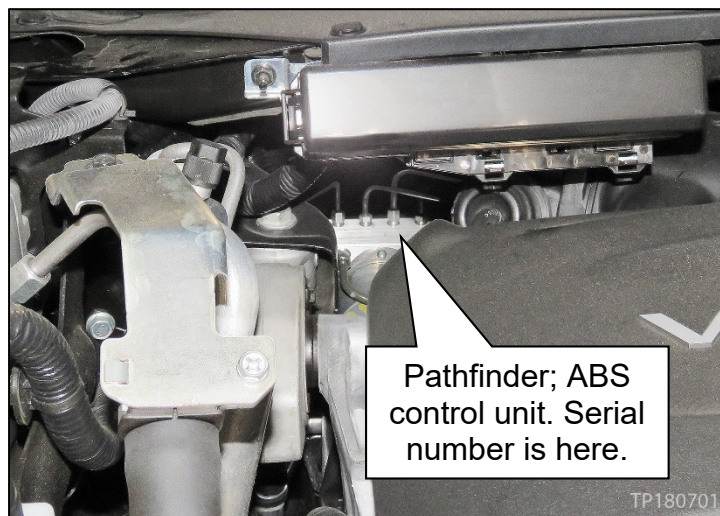


Figure 2A

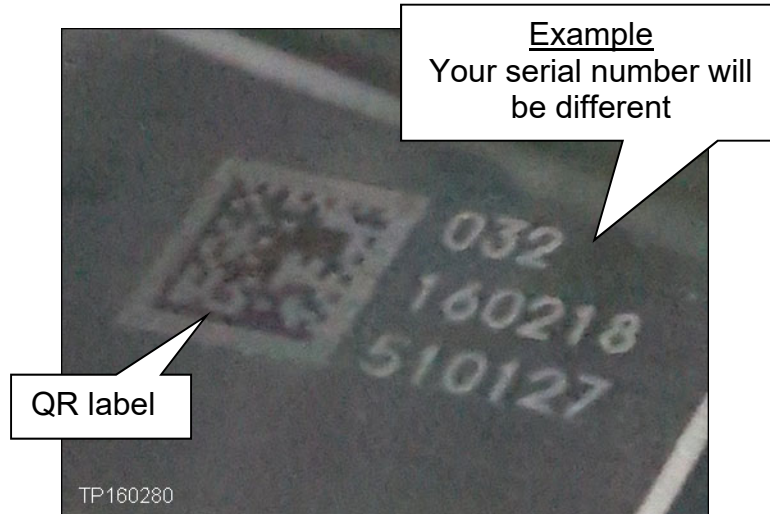


Figure 3A

2. Locate the serial number on the top of the ABS control unit next to the QR label (see Figures 1A - 3A).
 - If there is no serial number (the area shown in Figure 3A is blank), the ABS control unit (ABS actuator) is OK. **No further repair is required.**

3. Write the 15-digit serial number on the repair order.
 - In the example in Figure 3A, the serial number is **032160218510127** (this is an example - your serial number will be different).

NOTE: It may be easier to take a photo of the serial number with a smart phone and then read the serial number on the photo.

4. Take the repair order (with the serial number) to an ASIST work station.
5. On the left side of the ASIST main menu, select **Tech Support Info**, then **Bulletin Support Items**.

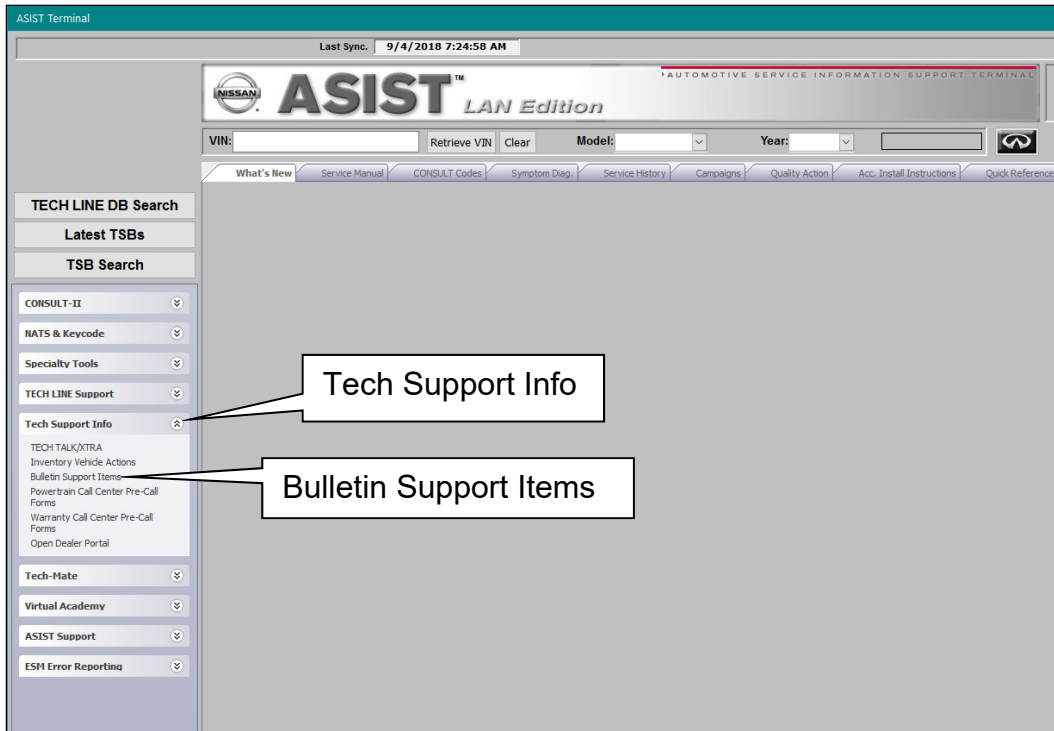


Figure 4A

6. Locate **PC649, R1807 - ABS Actuator Inspection**, then select **CLICK HERE**.

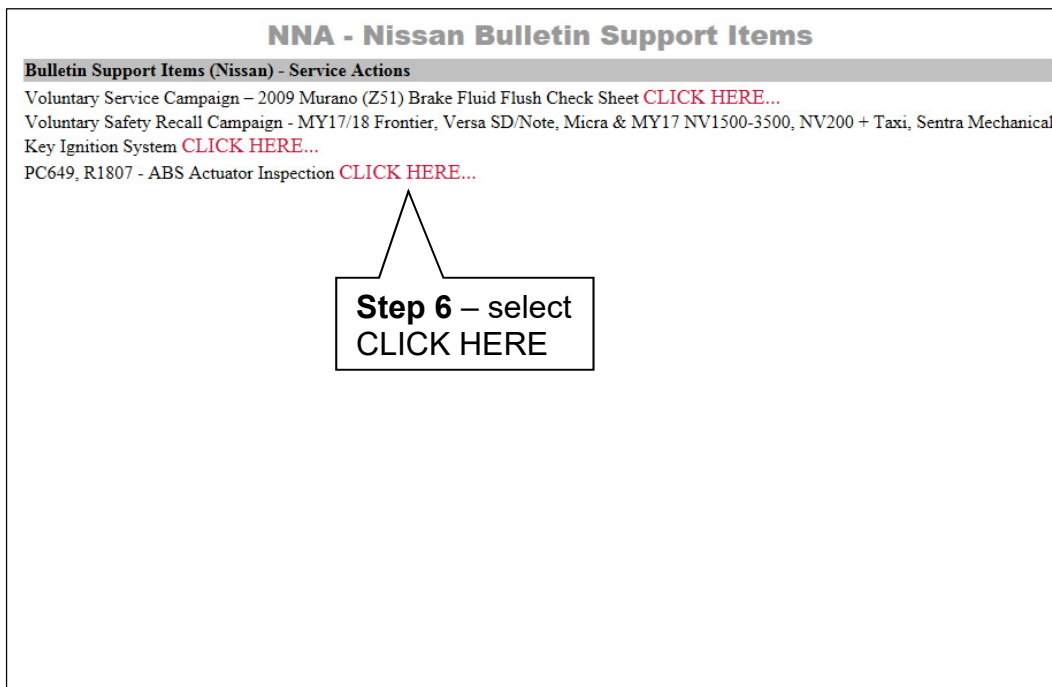
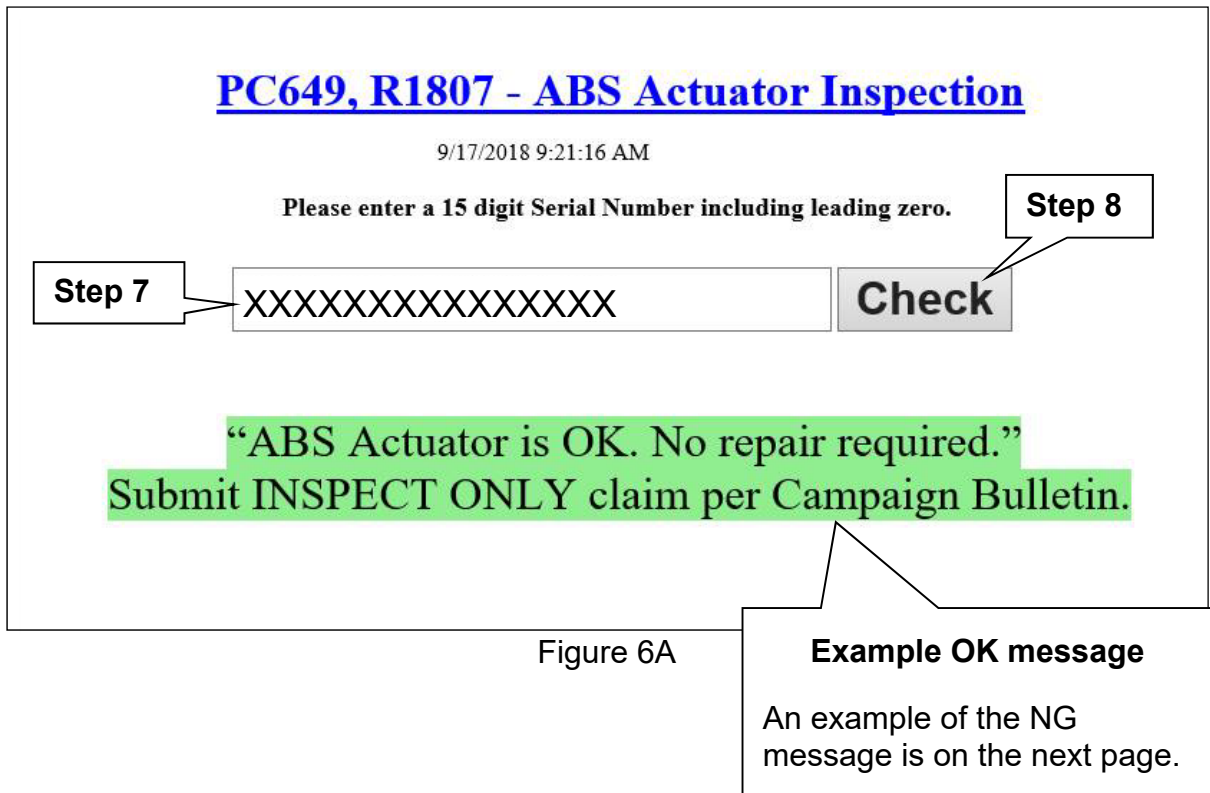


Figure 5A

7. Type in the 15-digit serial number.

8. Select **Check**.

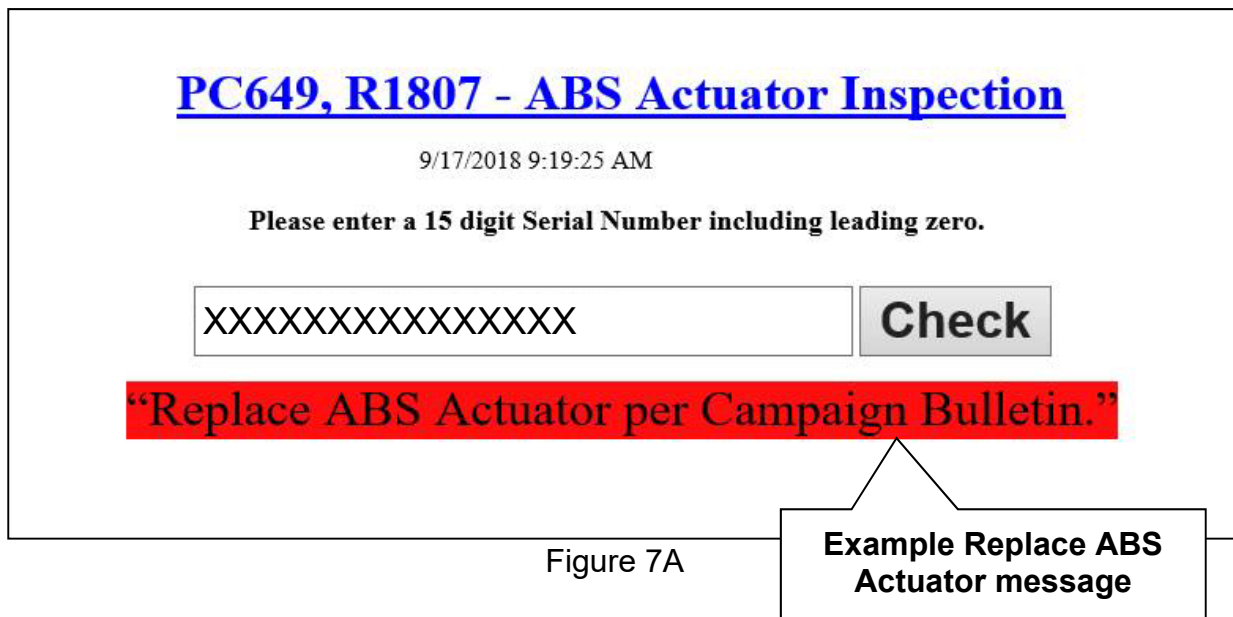
- If your ABS control unit (ABS Actuator) is OK, the **OK** message shown in Figure 6A will display.
- The screen in Figure 6A showing the 15-digit serial number and the **OK** message, **MUST** be printed and attached to the repair order for warranty documentation.



IMPORTANT: If the ABS control unit (ABS Actuator) is OK per the check above, but the **ABS warning light is ON:**

- The vehicle should **not** be driven.
- Diagnose and repair under normal warranty; this campaign does not apply.
- If there is a delay between inspection and repair, park the vehicle outside away from other vehicles and structures, disconnect the vehicle 12 volt battery and leave it disconnected while the vehicle is parked waiting for service.

- If your ABS control unit (ABS Actuator) is NG, the **Replace ABS Actuator** message shown in Figure 7A will display.
- The screen in Figure 7A showing the 15-digit serial number and the **Replace ABS Actuator** message, **MUST** be printed and attached to the repair order for warranty documentation.



IMPORTANT: If the ABS control unit (ABS Actuator) is NG:

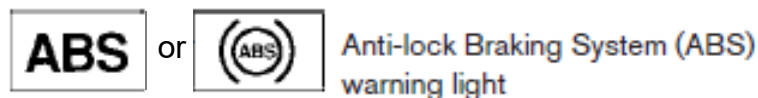
- The vehicle should **not** be driven.
- If parts are not available, provide the customer with a rental.
- If there is a delay between inspection and replacement of the ABS control unit, park the vehicle outside away from other vehicles and structures, disconnect the vehicle 12 volt battery and leave it disconnected while the vehicle is parked waiting for service.

9. If the ABS Actuator and Electric Unit (ABS control unit) requires replacement:

- If parts are not available, provide the customer with a rental.
- Refer to the appropriate Electronic Service Manual (ESM), section BRC/BRAKES-Brake Control System, for replacement information.
- Follow all instructions in the ESM for ABS Control Unit replacement.
- **IMPORTANT:** Make sure ADJUSTMENT OF STEERING ANGLE SENSOR NEUTRAL POSITION and CALIBRATION OF DECEL G SENSOR are done as part of the ABS Control Unit replacement procedure (both are listed in the Installation section of the procedure).
- Refer to the next page for ABS Control Unit Configuration.

IMPORTANT: If there is a delay between inspection and replacement of the ABS control unit, park the vehicle outside away from other vehicles and structures, disconnect the vehicle 12 volt battery and leave it disconnected while the vehicle is parked waiting for service.

10. After the procedure is complete (ABS control unit replaced and configured), check the ABS warning light for proper operation.



- When the ignition is turned ON, the ABS warning light illuminates for a few seconds and then turns OFF. This indicates the ABS is operational.
- If the ABS warning light stays illuminated, refer to ASIST and the ESM for further diagnosis.
- Repairs beyond ABS control unit replacement are not covered by this bulletin.

ABS CONTROL UNIT CONFIGURATION PROCEDURE

IMPORTANT: Before starting, make sure:

- ASIST on the CONSULT PC has been synchronized (updated) to the current date.
- All CONSULT-III plus (C-III plus) software updates (if any) have been installed.

NOTE: Although the ABS Control Unit Configuration Procedure is contained in the ESM, the instructions on pages 8 through 13 contain additional detail that may be helpful.

1. Connect CONSULT-III plus (C-III plus) to the vehicle.
2. Turn the ignition ON.
3. Open / start C-III plus.
4. Wait for the plus VI to be recognized.
 - The serial number will display when the plus VI is recognized.
5. Select **Re/programming, Configuration**.

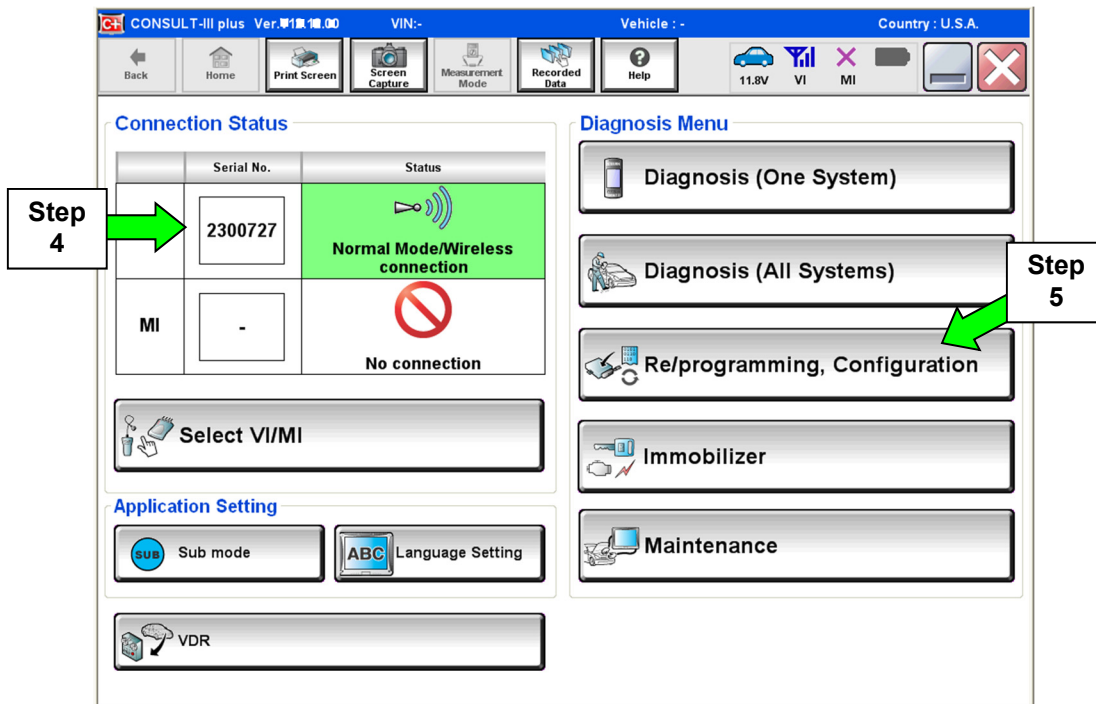


Figure 1B

6. Use arrows (if needed) to view and read all precautions.
7. Check the box confirming the precautions have been read.
8. Select **Next**.

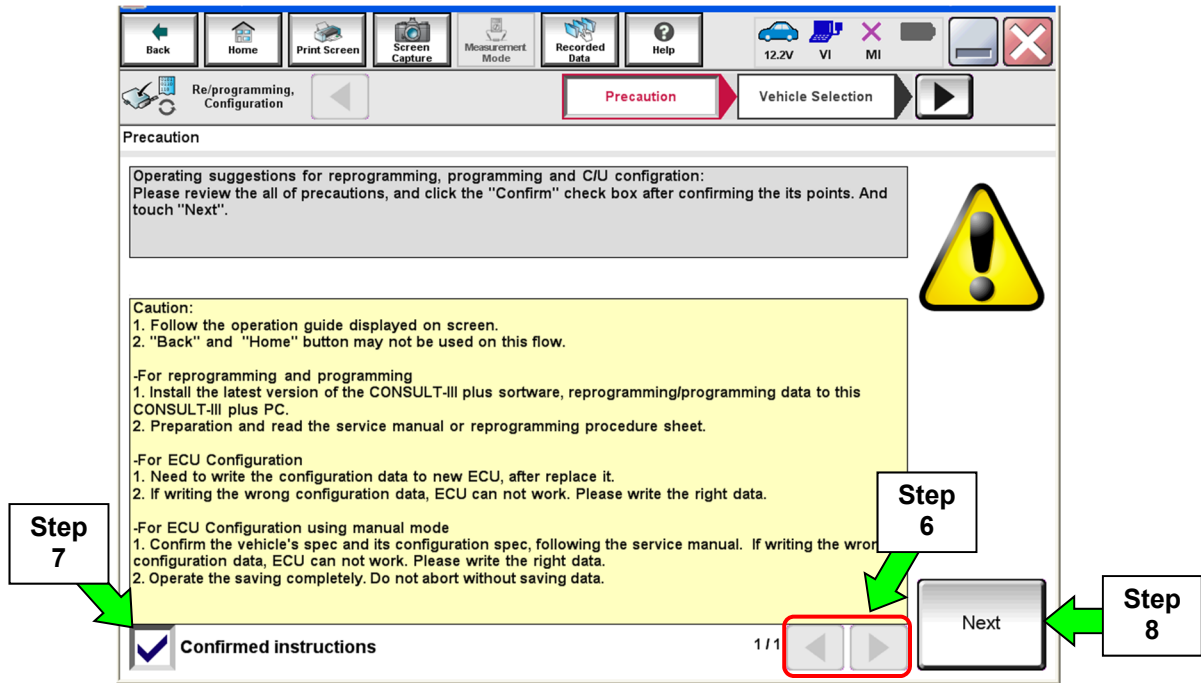


Figure 2B

9. If the screen in Figure 3B displays, select **Automatic Selection(VIN)**.
 - If the screen in Figure 3B does not display, skip to step 10.

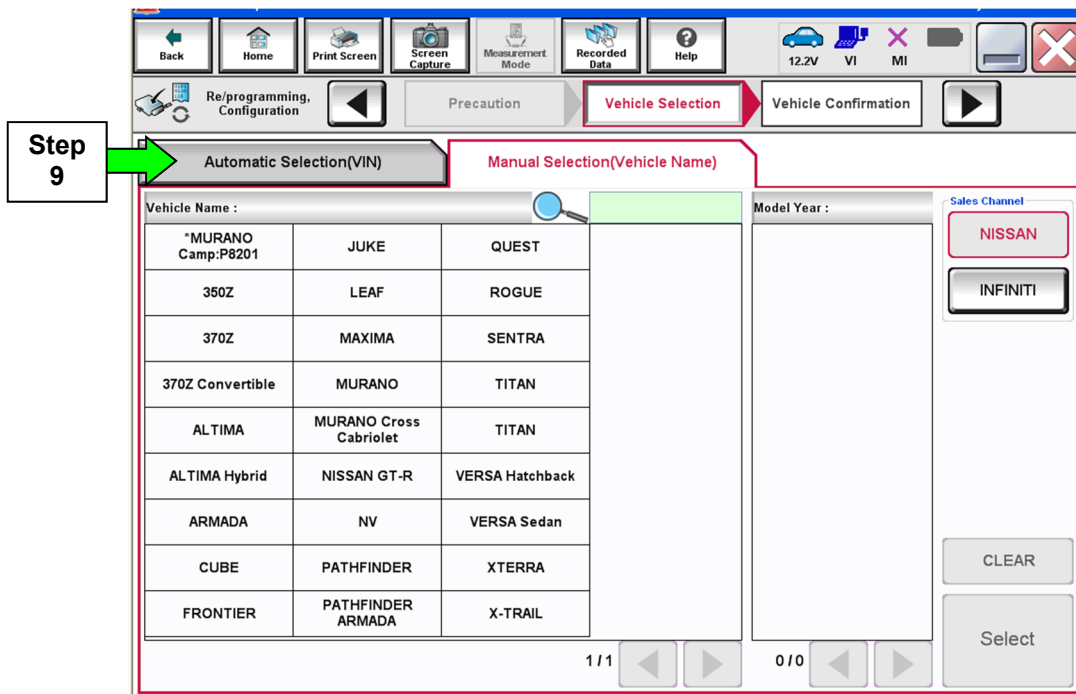


Figure 3B

10. Make sure **VIN or Chassis #** matches the vehicle's VIN.

11. Select **Confirm**.

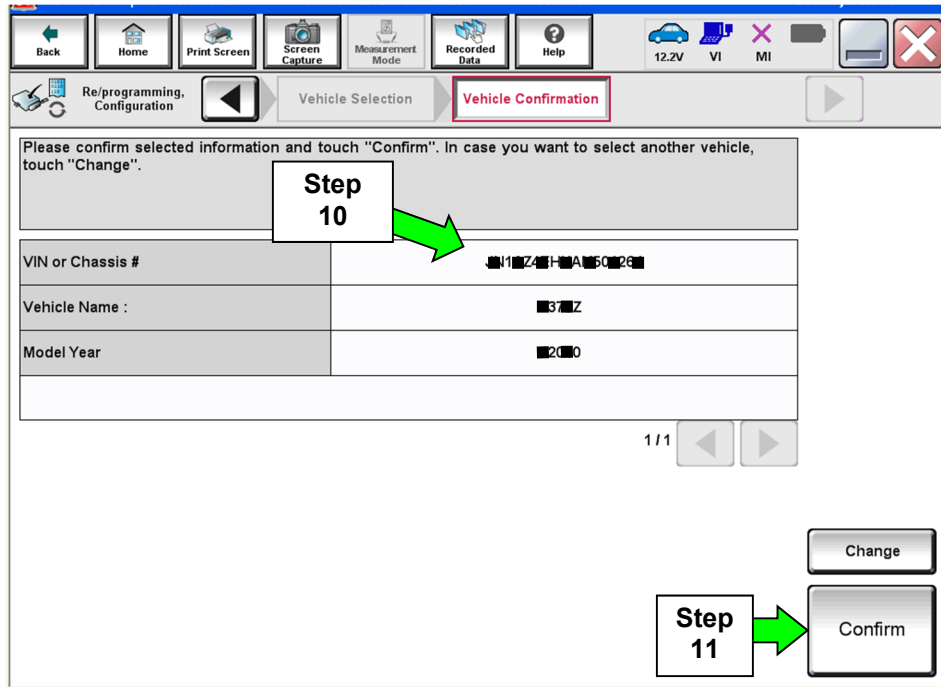


Figure 4B

12. Select **Confirm**.

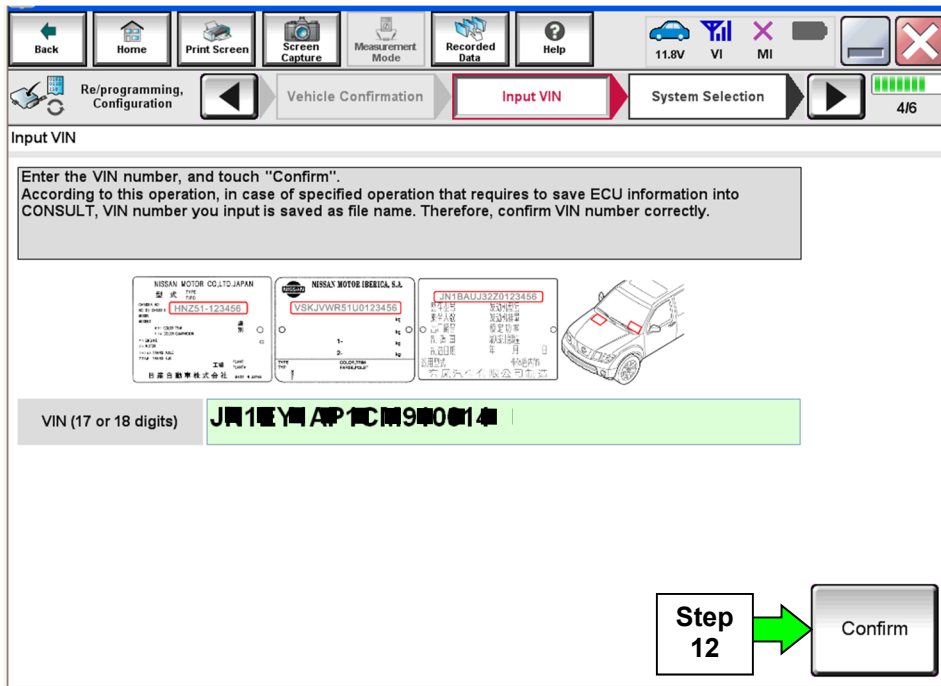


Figure 5B

13. Select ABS.

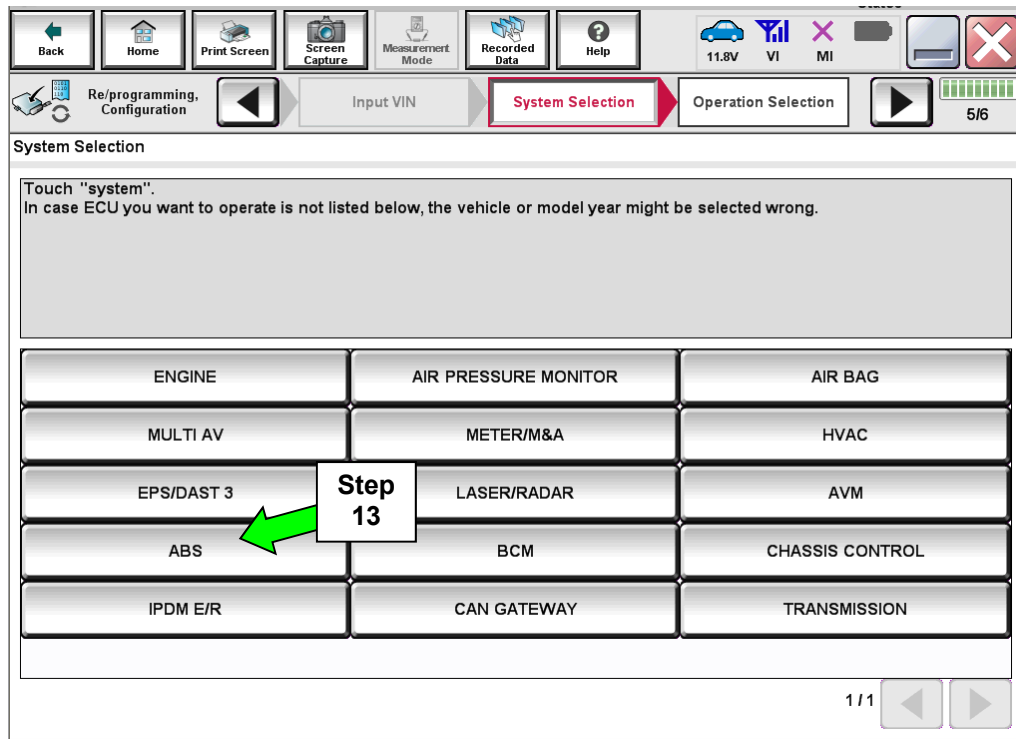


Figure 6B

14. Select **Manual Configuration**.

- **DO NOT** select Reprogramming.

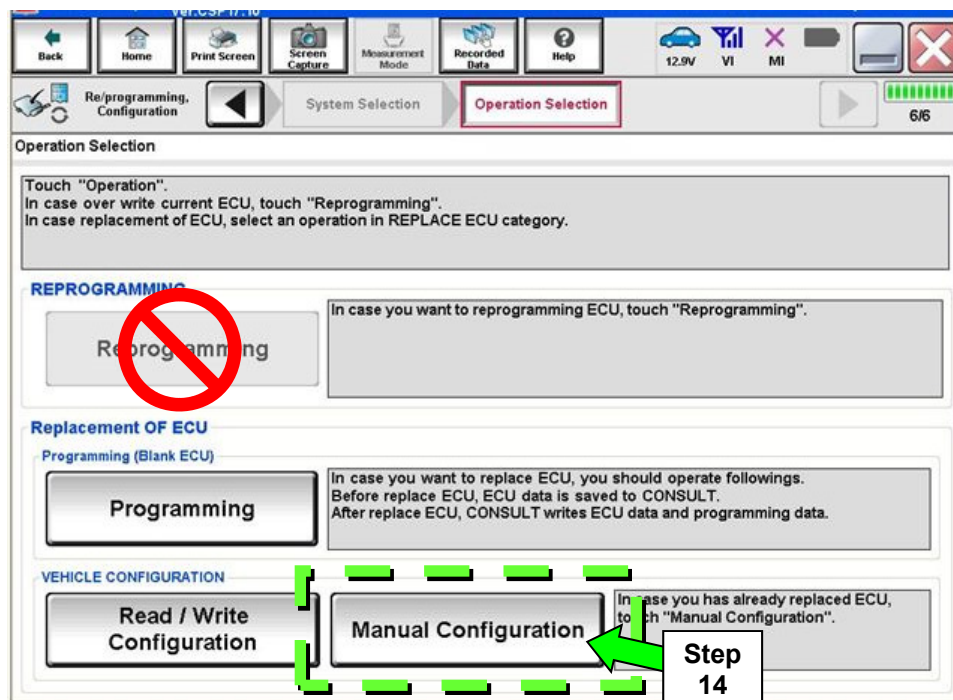


Figure 7B

15. Select the correct **Type ID** number.

- Refer to **Table A** below for the correct **Type ID** number for the vehicle you are working on.
- If needed, use scroll arrows to find the correct number.

NOTE: When a vehicle has only one configuration available, a list will not be displayed. Select **Next** (step 16), and C-III plus will select the correct configuration.

16. Select **Next**.

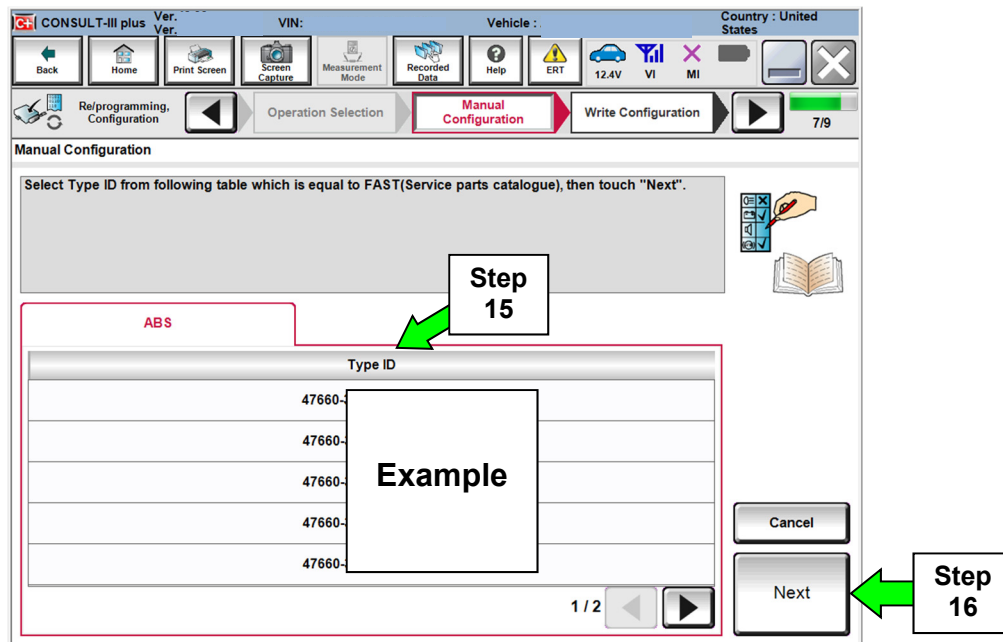


Figure 8B

TABLE A

Model	Vehicle Options	TYPE ID #
2017 Pathfinder	2WD with ICC and FEB * (Platinum)	47660 - 9PP2C
	4WD with ICC and FEB * (Platinum)	47660 - 9PP5C
	2WD without ICC *	47660 - 9PP4D
	4WD without ICC *	47660 - 9PP4C
2015-2017 Murano	2WD with ICC *	47660 - 9UD7C
	4WD with ICC *	47660 - 9UD7D
2016-2017 Maxima	With ICC * and 18 inch wheels	47660 - 4RB2C
	With ICC * and 19 inch wheels	47660 - 4RB5C

* ICC = Intelligent Cruise Control. FEB = Forward Emergency Braking.

17. Confirm the correct Type ID number is selected.

18. Select **OK**.

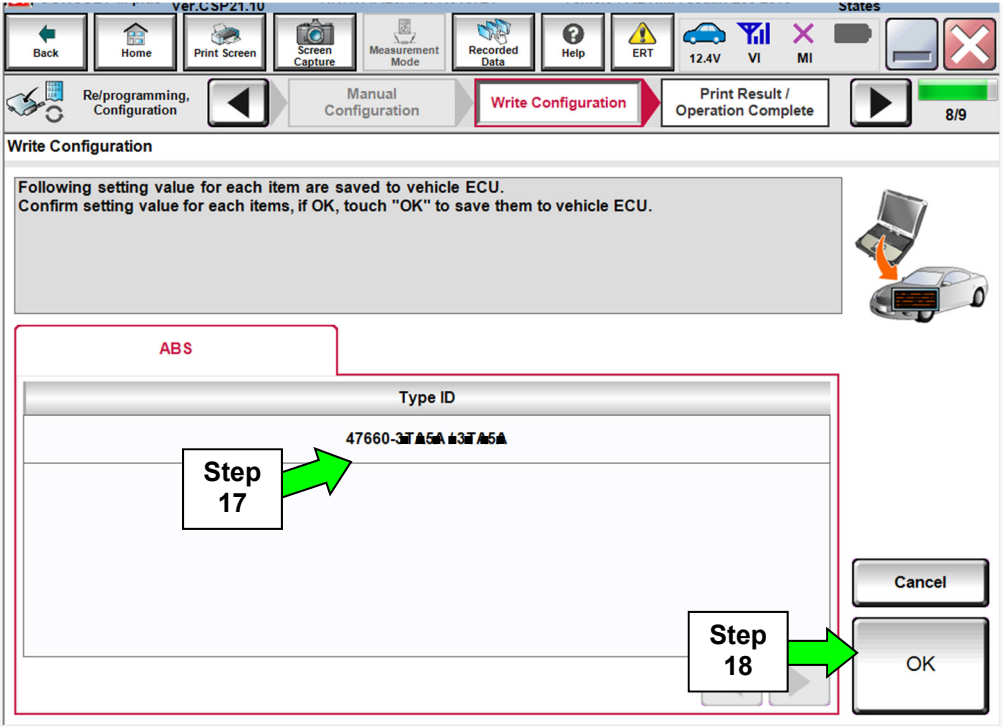


Figure 9B

19. Configuration is complete, select **End**.

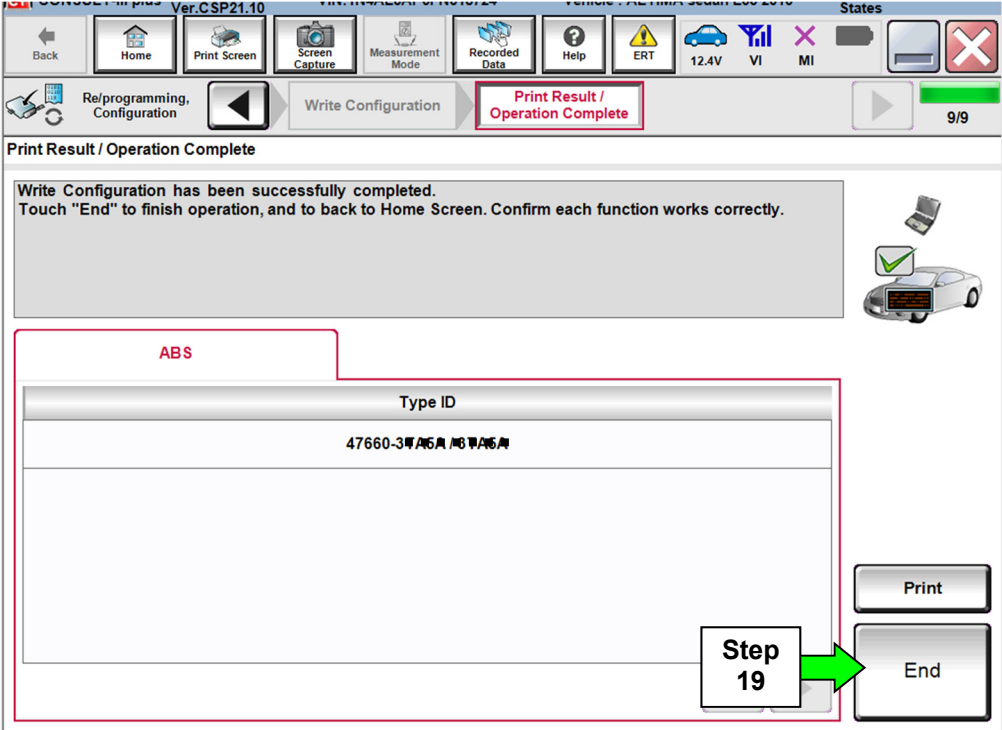


Figure 10B

PARTS INFORMATION

DESCRIPTION	MODEL	PART #	QUANTITY
ABS Control Unit	Murano (2WD)	47660 - 9UD6C	1
	Murano (4WD)	47660 - 9UD6D	
	Maxima	47660 - 4RB1C	
	Pathfinder (4WD)	47660 - 9PP1B	
	Pathfinder (2WD with ICC) *		
	Pathfinder (2WD without ICC) *	47660 - 9PP1D	
Brake Fluid (1)	N/A	999MP - A4100P	1

* ICC = Intelligent Cruise Control.

(1) Order this item through the Nissan Maintenance Advantage program: Phone: 877-NIS-NMA1 (877-647-6621). Website order via link on dealer portal www.NNAnet.com and click on the "Maintenance Advantage" link.

NOTE: Old parts will be put on parts return. Dealer charge backs will occur if an ABS control unit is replaced incorrectly.

CLAIMS INFORMATION

Submit a “CM” line claim using the following claims coding:

CAMPAIGN (“CM”) I.D.	DESCRIPTION	OP CODE	FRT
R1807	Inspect anti-lock brake system (ABS) actuator serial number – OK Condition	R18070	0.3 hrs.

OR

For Murano or Maxima vehicles:

CAMPAIGN (“CM”) I.D.	DESCRIPTION	OP CODE	FRT
R1807	Inspect anti-lock brake system (ABS) actuator serial number <u>and</u> Replace ABS Control Unit – Replace Condition	R18071	2.6 hrs.

OR

For Pathfinder vehicles:

CAMPAIGN (“CM”) I.D.	DESCRIPTION	OP CODE	FRT
R1807	Inspect anti-lock brake system (ABS) actuator serial number <u>and</u> Replace ABS Control Unit – Replace Condition	R18072	2.8 hrs.