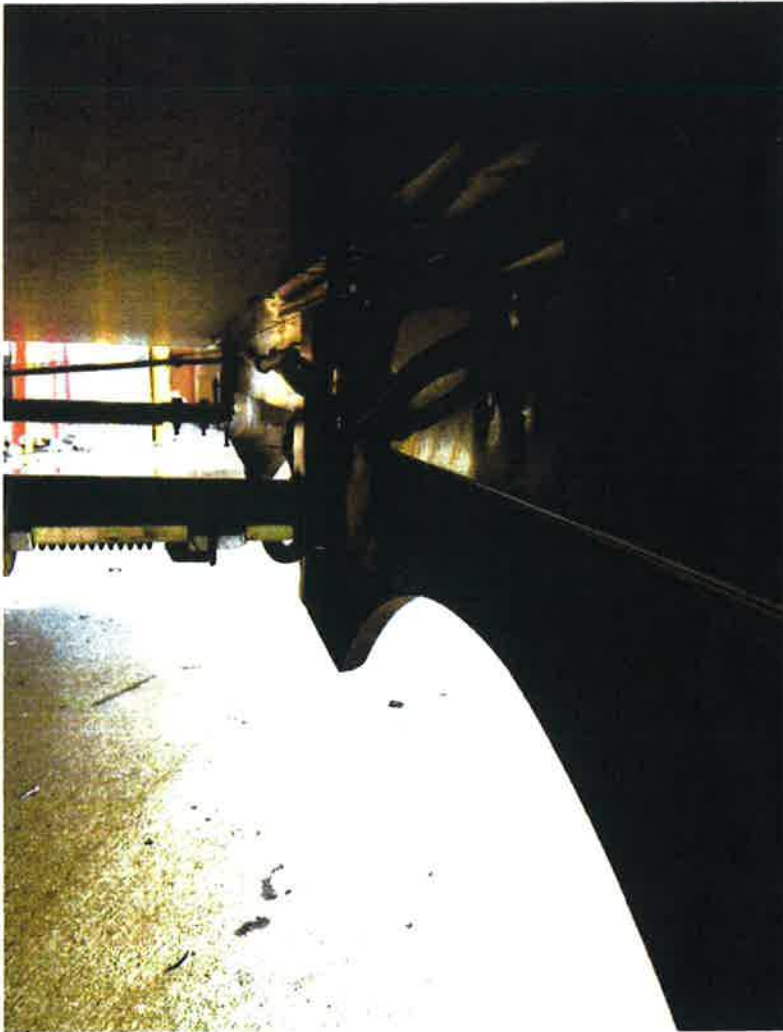
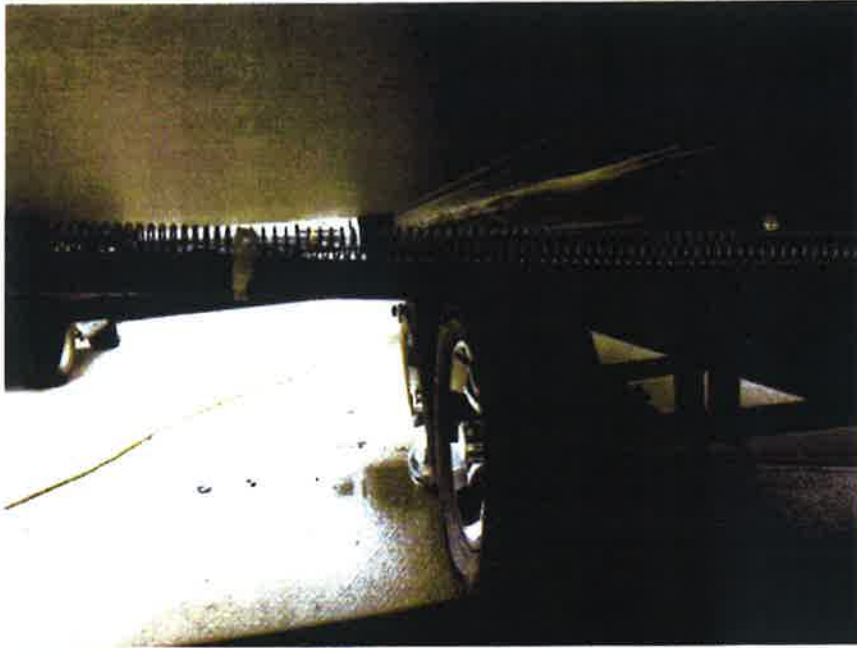


### 261RL Gas Line Relocation

1. Open slide, remove original flex line and copper going from the main line to the refrigerator.
2. Run the new line through the existing hole and connect to the refrigerator. From the refrigerator hole in the floor P clamp the gas line behind the skirt metal to the rear of the slide. Make sure to go on the inside of the slide head assembly.
3. Screw the spring from the underneath of the slide floor outer edge, to the frame making sure they are lined up fairly straight.
4. Zip tie the gas line to the spring going towards the frame.
5. P clamp the gas line at the frame and run it down to the underside of the frame and place a P clamp. Follow the gas line along a cross member to the other side of the coach placing P clamps for support.
6. Run the gas line along the underside of the frame till you reach the T at the main gas line and connect. If you have any excess hose, curl it up P clamp it to the frame against the underbelly.
7. Recaulk the hole going into the refrigerator, make sure there are no kinks in the line, and test the connections.



8.



9.

