



Technical Service Bulletin

GROUP RECALL	NUMBER 18-01-002-G
DATE August, 2018	MODEL(S) G80 (DH)

SUBJECT: 2018 G80 (DH) OCCUPANT CLASSIFICATION SYSTEM
(RECALL CAMPAIGN 002G)

★ IMPORTANT

****DEALER STOCK AND RETAIL VEHICLES****

Dealers must perform this Recall Campaign on all affected vehicles prior to customer retail delivery and whenever an affected vehicle is in the shop for any maintenance or repair.

When a vehicle arrives at the Service Department, access Hyundai Motor America's "Warranty Vehicle Information" screen via WEBDCS to identify open Campaigns.

Description: Genesis G80 (DH) vehicles are equipped with an Occupant Classification System ("OCS") that classifies the occupant type as an adult, a child, or a child restraint seat. The OCS control module in certain 2018MY G80 (DH) may have been programmed incorrectly causing an erroneous detection of an adult in the passenger seat when the passenger seat is unoccupied or occupied by an infant or child. If an infant or child is seated in the front passenger seat and the OCS system does not deactivate the passenger front airbag during a crash, the child or infant could be injured by the airbag.

This bulletin describes the procedure to reprogram the Occupant Classification System ("OCS").



Applicable Vehicles:
Certain 2018MY Genesis G80 (DH) vehicles produced between January 18, 2017 through June 5, 2018

Warranty Information:

Model	Op. Code	Operation	Op. Time	Causal Part	Nature Code	Cause Code
G80 (DH)	81C059R0	OCS RESET	0.3 M/H	88952-B1500	I14	ZZ7

NOTE 1: Submit Claim on Campaign Claim Entry Screen

NOTE 2: If a part is found in need of replacement while performing Recall 002G and the affected part is still under warranty, submit a separate claim using the same Repair Order. If the affected part is out of warranty, submit a Prior Approval Request for goodwill consideration prior to performing the work.

Service Procedure:

1. Turn the ignition to the “ON” position by pressing the **START STOP BUTTON (A)** twice without pressing the brake pedal.

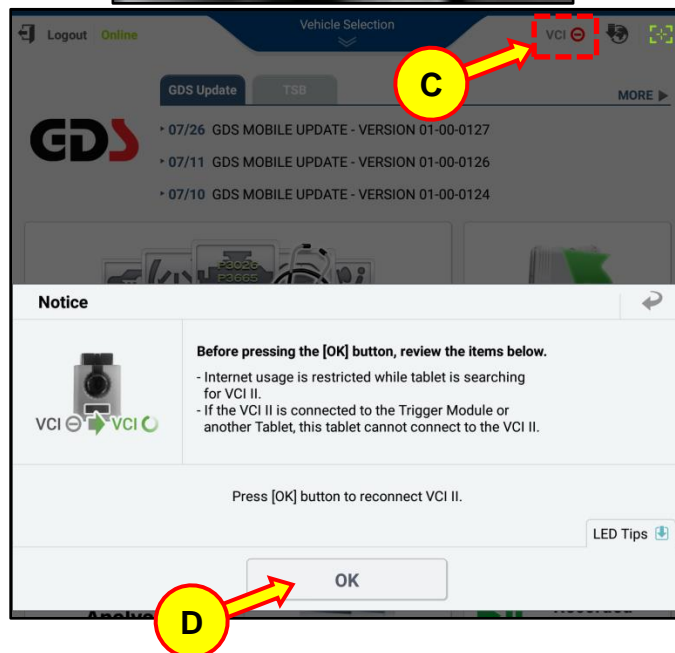


2. Launch the Hyundai/Genesis GDS app on the Hyundai/Genesis tablet and plug the VCI-II (B) into the vehicle’s DLC connector.



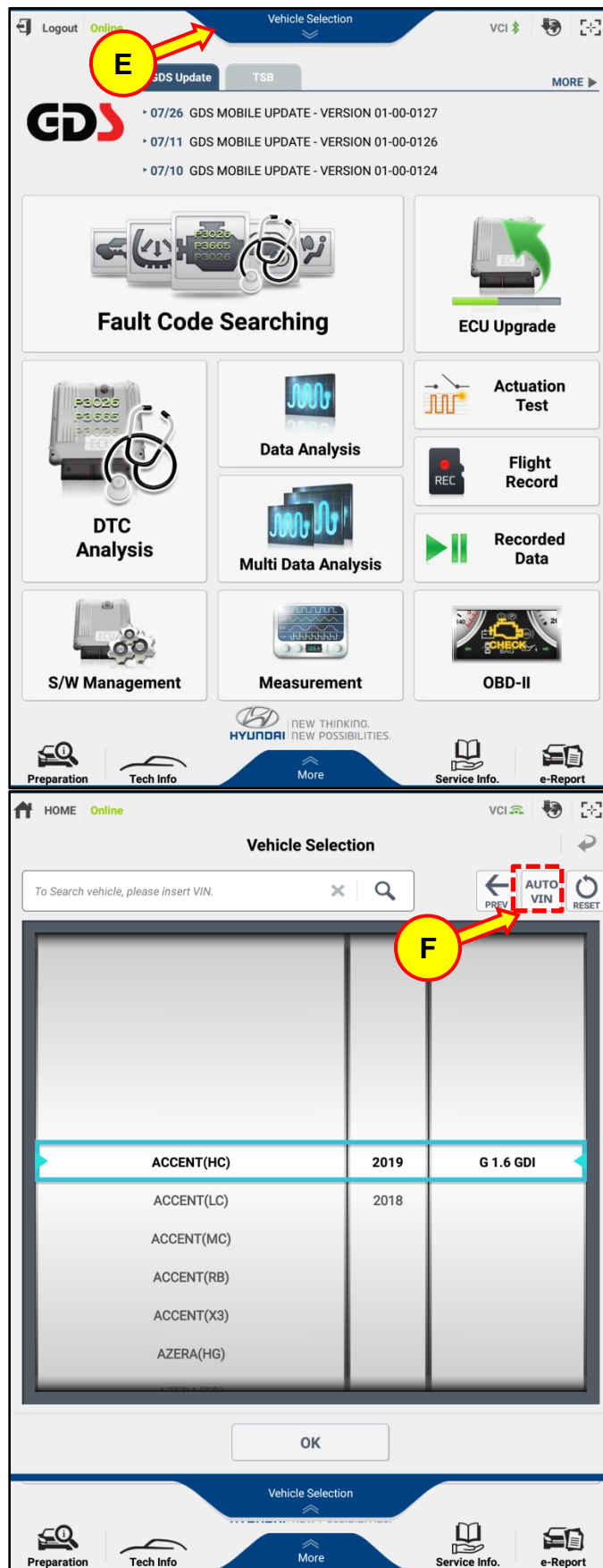
- 3. Wait for the VCI indicator light to turn green.

If the VCI indicator light doesn't turn green, press the VCI button (C) located on top right corner and press [OK] (D) to connect the VCI manually.



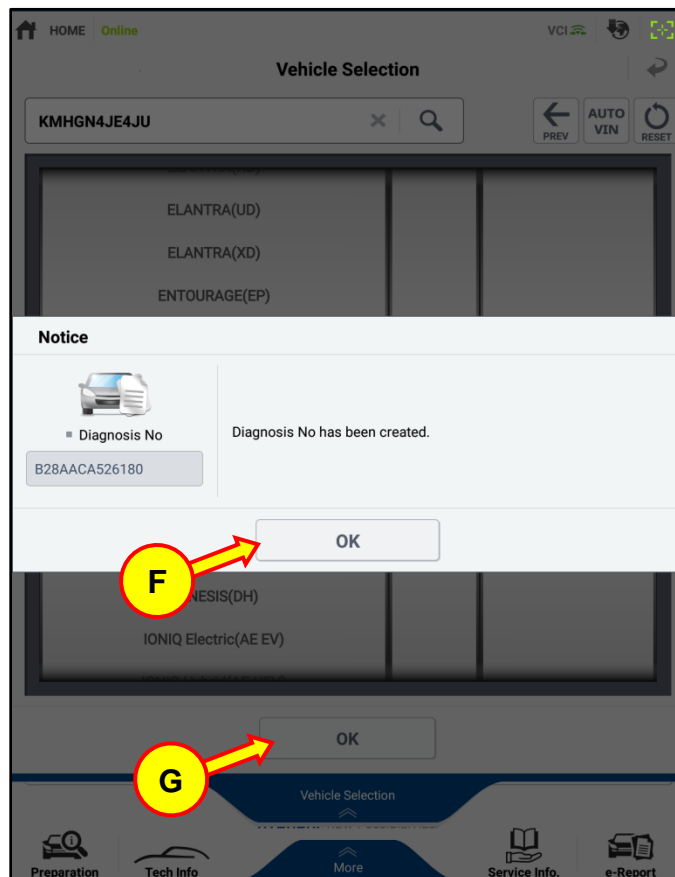
- Once the VCI has connected, slide down Vehicle Selection (E) to verify the VIN.

If the VIN was not recognized automatically, press AUTO VIN (F) or type in the VIN.

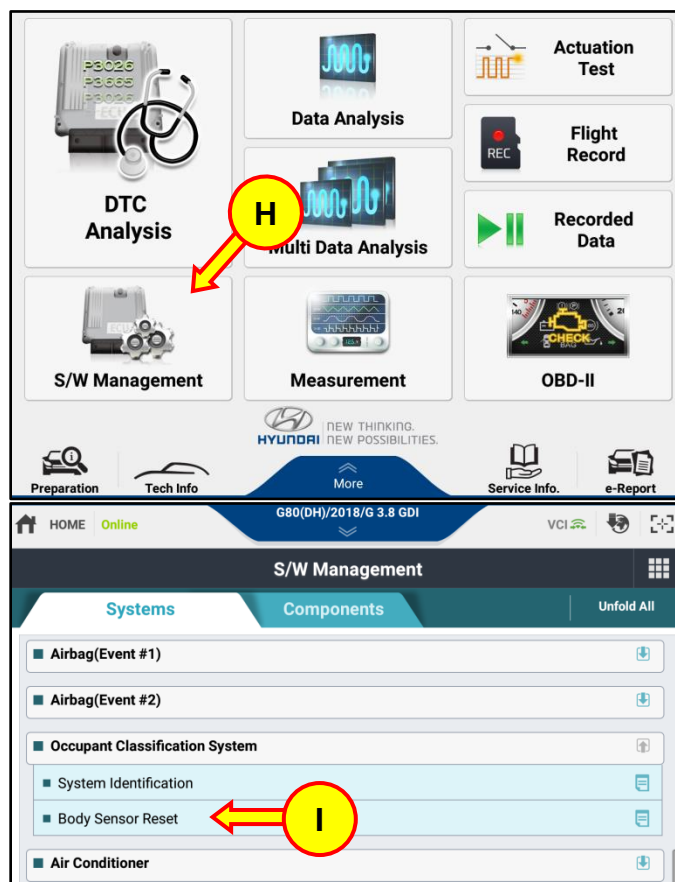


- 5. When the VIN is recognized, a notice for Diagnosis No. will appear. Press [OK] (F) for the Diagnosis No.

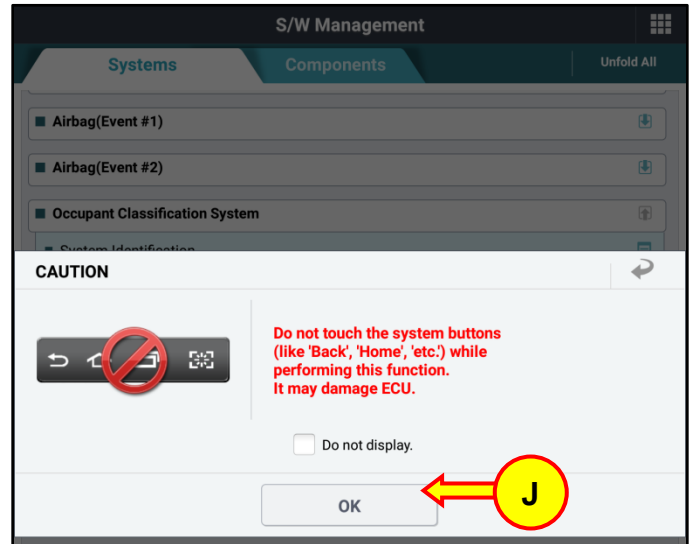
Then, press [OK] (G) after verifying the VIN is correct.



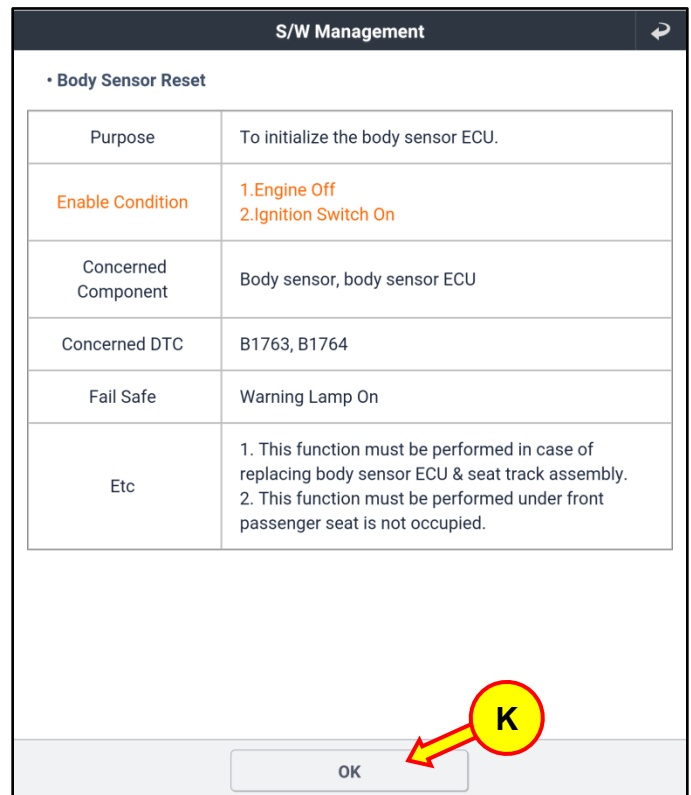
- 6. In S/W Management (H), scroll down to find Body Sensor Reset (I) under Occupant Classification System. And, press Body Sensor Reset.



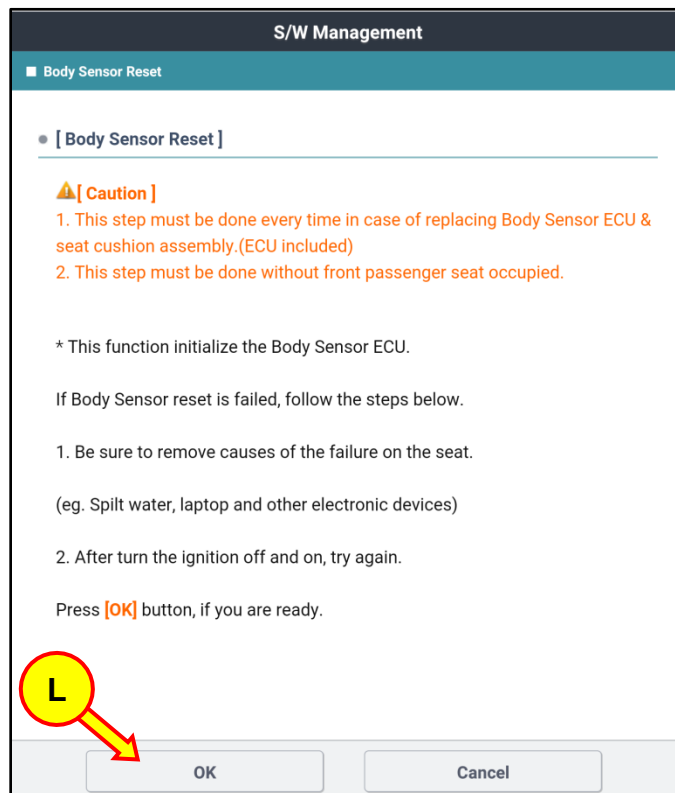
7. Press [OK] (J) when the Caution window appears.



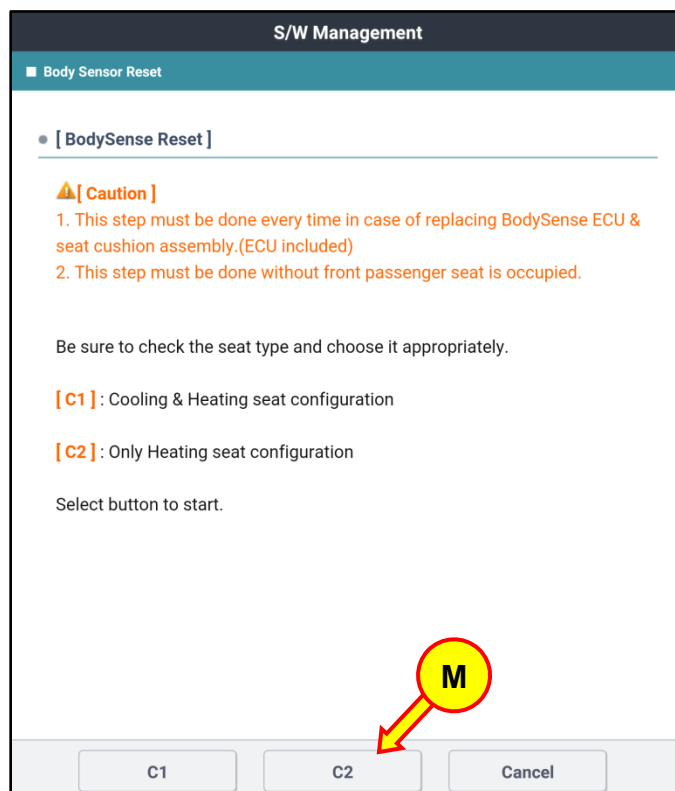
8. Press [OK] (K) to initialize the body sensor ECU.



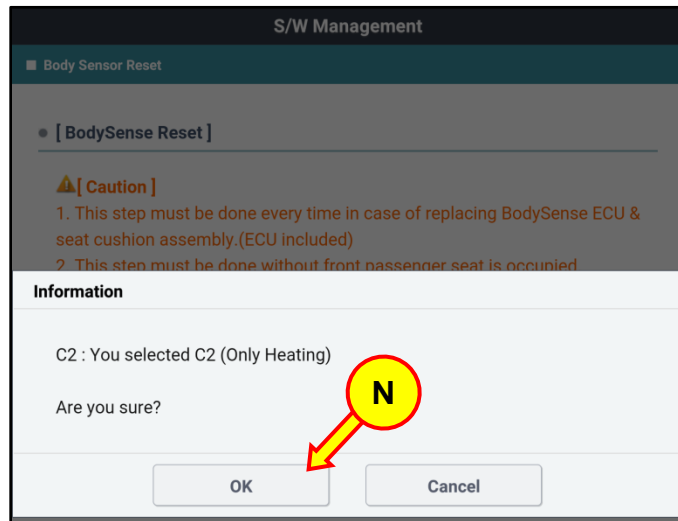
9. Press [OK] (L) to proceed.



10. Press [C2] (M) for “Only Heating Seat Configuration”.



11. Verify that you have selected [C2] by clicking [OK] (N).



12. Click [OK] (O) to confirm that reset is completed.

