

**June 21, 2018**

Version 1

## Safety and Non-Compliance Recall: 2018 Civic Certification Label Missing Production Date

Supersedes 18-071, Non-Compliance Recall: 2018 Civic Certification Label Missing Production Date, dated June 15, 2018

### AFFECTED VEHICLES

Year	Model	Trim	VIN Range
2018	Civic	ALL	Check the iN VIN status for eligibility.

### BACKGROUND

During manufacturing, the certification label was printed without the month and year. This causes the vehicle to be noncompliant with Title 49 of the Code of Federal Regulations, Part 567, "Certification." In the event of a vehicle safety recall, an incorrect manufacturing date may prevent owners from determining if the recall affects them, increasing their risk of injury or a crash.

### CUSTOMER NOTIFICATION

Owners of affected vehicles will be sent a notification of this campaign.

Do an iN VIN status inquiry to make sure the vehicle is shown as eligible.

Some vehicles affected by this campaign may be in your new or used vehicle inventory.

Failure to repair a vehicle subject to a recall or campaign may subject your dealership to claims or lawsuits from the customer or anyone else harmed as a result of such failure. To see if a vehicle in inventory is affected by this safety recall, do a VIN status inquiry before selling it.

### CORRECTIVE ACTION

Replace the certification label.

### PARTS INFORMATION

Part Name	Part Number	Quantity
Certification Label	Controlled Part	1

**NOTE**

Once an appointment is scheduled with the customer, order a certification label from TRS. Make sure you have the VIN available when you call 800-880-1072 between 8:30 am - 5:00 pm PST.

**CUSTOMER INFORMATION:**The information in this bulletin is intended for use only by skilled technicians who have the proper tools, equipment, and training to correctly and safely maintain your vehicle. These procedures should not be attempted by "do-it-yourselfers," and you should not assume this bulletin applies to your vehicle, or that your vehicle has the condition described. To determine whether this information applies, contact an authorized Honda automobile dealer.

## WARRANTY CLAIM INFORMATION

Operation Number	Description	Flat Rate Time	Defect Code	Symptom Code	Template ID	Failed Part Number
8150C2	Remove and replace the certification label.	0.3 hr	6CM00	U2300	A18071A	42762-TLA-A01

Skill Level: Repair Technician

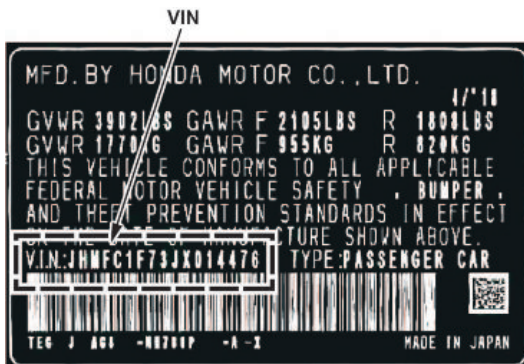
## REPAIR PROCEDURE

1. Open the driver's door, and locate the certification label.



The certification label is located on the driver's side doorjam below the striker.

2. Confirm the VIN on the dashboard matches the VIN on the new certification label.



Confirm that the VIN matches what is on the replacement label.

3. Use a heat gun and a plastic tool to remove the label. Be careful not to scratch or damage the paint.



HEAT GUN OR HAIR DRYER



PLASTIC TOOL

4. After the label is removed, using isopropyl alcohol on a lint free cloth, thoroughly clean the area where the new label will be attached. Make sure there is no residue from the old label, and allow the alcohol to dry.



5. Apply the new certification label 5 mm below the striker. Make sure the label is applied in the same orientation as the removed label.

**NOTE**

Make sure the label is properly applied to the body, and make sure there are no wrinkles, tears, or bubbles on the new label.



Mount the new label  
5 mm below the striker.

6. As a secondary confirmation, have another person confirm the VIN on the new certification label with the VIN on the dashboard.

END