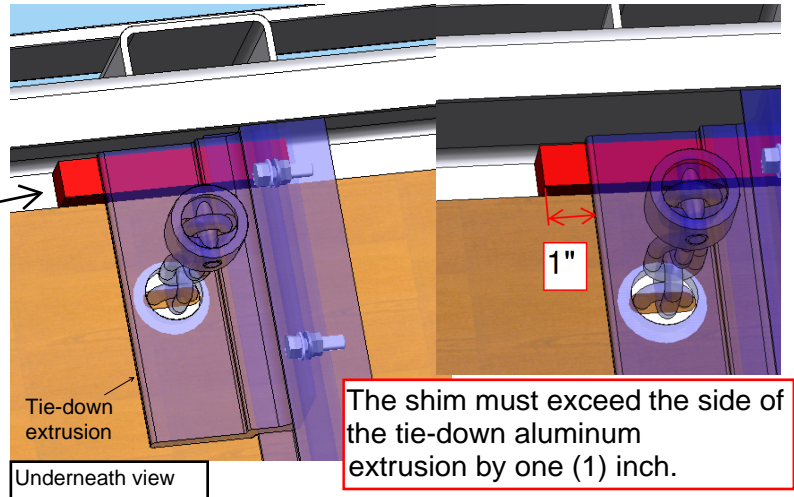
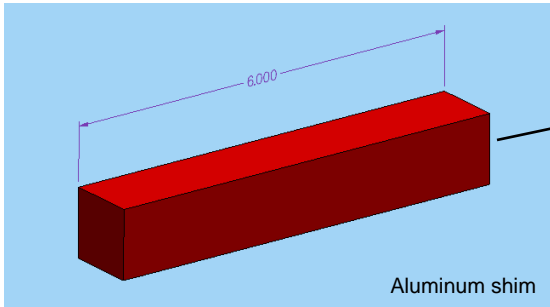


RECALL REPAIR AND INSTALLATION PROCEDURE FOR MANAC REPAIR CENTERS

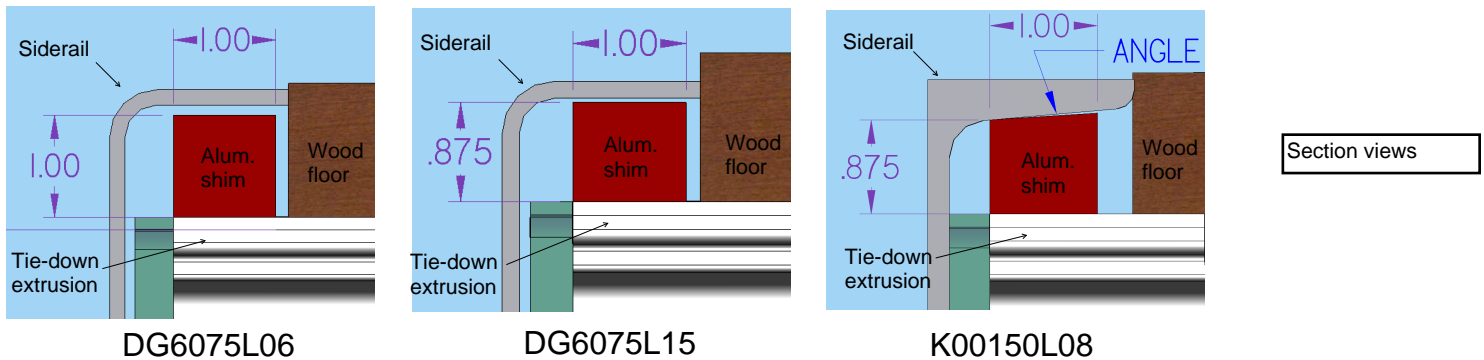
Tie down chain aluminum shim

July 2018

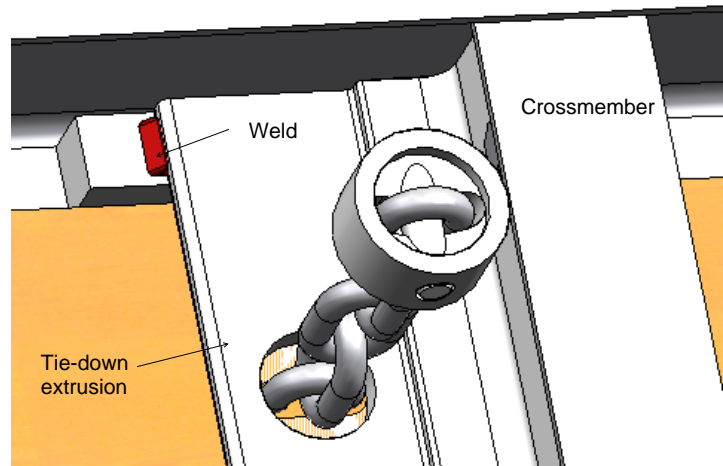
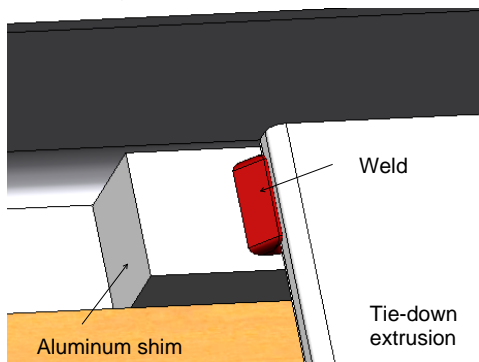
1- Insert the aluminum shim underneath the floor of the trailer, between the tie-down extrusion and the siderail.



Depending on your trailer model, you have received one of the three shapes below :



2- Weld the shim on the aluminum extrusion with a TIG or a MIG welder. The weld size must be 1/4" and must have a minimum of 3/4" long.



Underneath views of weld

For any questions, please contact our warranty department:

Email : warranty@manac.com

Phone : 1 800 463 1628