



SAFETY BULLETIN

Release Date: May 17, 2018

SLI

Communication #: T-18-02-A

Model Year(s): 2017-2018

— Confidential and Proprietary —

VERSION: R01 (May 17, 2018)

IMPORTANT STOP SALE SAFETY NOTICE!

Stop selling affected vehicles immediately until the repair procedure has been completed on affected units at your dealership. Federal law prohibits the sale of products subject to a recall. Selling such products could subject the seller to substantial penalties.

IMPORTANT

If you are working with a printed copy, please verify you have the most current version of these instructions.

SUBJECT: BRAKE PEDAL CLEVIS PIN CLIP INSPECTION

PURPOSE

A small number of Slingshot vehicles may have been manufactured with a brake pedal clevis pin clip that was not installed properly. A misassembled or absent clevis pin clip may allow the clevis pin to back out of the assembly thereby preventing the brake pedal from functioning as intended and increasing the risk of a crash.

To address this concern, dealers should follow the inspection process outlined in Part A to ensure the clip securing the brake pedal pin is properly installed. If the clip is missing or found to be improperly installed during the inspection, you will need to start an ASK Polaris case for repair instructions and warranty claim processing.

NOTE

Only a small number of vehicles will exhibit the manufacturing defects described above. The required inspection outlined below will resolve the majority of the affected population without requiring brake pedal clevis pin / clip replacement.

AFFECTED MODELS

MODEL YEAR	MODELS	VEHICLE IDENTIFICATION NUMBER RANGE
2017–2018	Slingshot S / SL / SLR / GT	Reference Unit Inquiry on the dealer website or the Service Bulletin list on the STOP site to lookup affected VINs.

CUSTOMER NOTIFICATION

Dealers are required to review their sales records and make arrangements with customers for Safety Bulletin completion. In addition to consumer units, dealers are required to correct any affected units in their inventory. Polaris will be mailing a Safety Alert notification letter to consumers affected by this Safety Bulletin in the United States and Canada.

WARRANTY CLAIM PARTS INFORMATION

Bulletin/Advisory parts are excluded from the standard RMA policy and cannot be returned. An Initial Recommended Order Quantity has not been provided for this bulletin. Use Quantity Ordered to Date and the Open VIN List from the STOP site to determine an order amount that's right for your dealership. For more details, refer to University of Polaris training course "Polaris Item Availability and Daily Ordering" and click on "Bulletin Ordering Training".

BRAKE PEDAL CLEVIS PIN CLIP INSPECTION	
Bulletin #	T-18-02-A
Claim Type	SB (Service Bulletin)
Labor Allowance	0.2 hours (12 minutes)
Part Number / Description	0000541 (QTY 1) Bulletin Misc Labor
Parts Availability	NA
University of Polaris Video Training Required	Yes ¹

¹Polaris requires one person from a dealership to be certified before parts ordering may occur and one person from a dealership to be certified before warranty claims may be processed.

BULLETIN CONTACT LIST & SCHEDULING TOOL

A scheduling tool is available for dealers to keep a record of customers contacted and scheduled for this bulletin. This optional tool provides visibility for your dealership and will be helpful to track the status of scheduled service. For more information, log in to <http://www.universityofpolaris.com>.

COVERAGE PERIOD

Coverage will begin on 5/17/2018. This bulletin has no expiration date.

UNIVERSITY OF POLARIS TRAINING REQUIREMENT

Each member of your service department team must watch the training video on University of Polaris prior to completing **ANY** work, or submitting **ANY** warranty claim for this Safety Bulletin. You must watch the video through the University of Polaris in order to get credit for watching the video.

www.universityofpolaris.com

PARTS RETURN / DISPOSAL INFORMATION

Under no circumstances shall the parts removed be re-used, sold, or re-purposed for another application. It is your dealership / distributor's responsibility to make sure every part replaced (related to this communication) is taken out of circulation and disposed of properly or returned to Polaris (if required).

FEEDBACK FORM

A feedback form has been created for the technician to provide Polaris with an overall satisfaction rating for the instructions, provide comments on your experience or upload pictures/video. This feedback form is viewable on a mobile device by scanning the QR code or by clicking [HERE](#) if viewing this document electronically.



T-18-02-A BRAKE CLEVIS PIN CLIP INSPECTION

TOOLS REQUIRED

- Flashlight

T-18-02-A BRAKE CLEVIS PIN INSPECTION

1. Park vehicle on a flat and level surface. Keep transmission in gear. Set parking brake. Turn key to "OFF" position and remove from vehicle.

CAUTION

Always wear eye protection.

2. Cover the driver-side Wing Panel and Speaker Surround with a protective mat to prevent cosmetic damage to panels and painted surfaces.

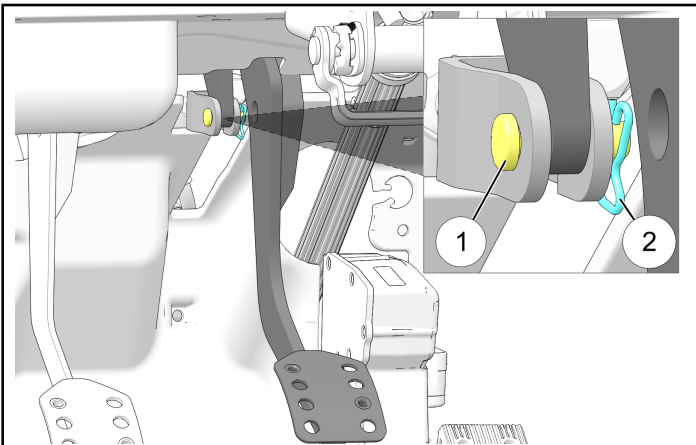
CAUTION

Remove personal items such as rings, keychains, belts, etc. which may unintentionally damage cosmetic surfaces

NOTE

To maximize access, slide seat rearward and tilt steering column upward.

3. Using a flashlight, locate the pin and clip in the driver-side footwell securing the brake pedal arm to the master cylinder clevis. Visually inspect to ensure the pin ① and clip ② are present.



STOP!

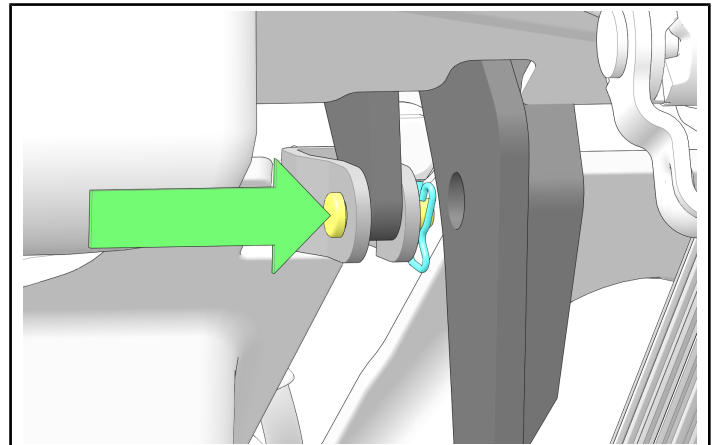
If clip is not present, submit an ASK Polaris case for further instructions.

- US/CAN Dealers: Submit an Ask Polaris Service & Warranty Question > Authorization: Non-Cosmetic & Polaris ESC.
- INT'L Dealers: Contact your Country Service Department

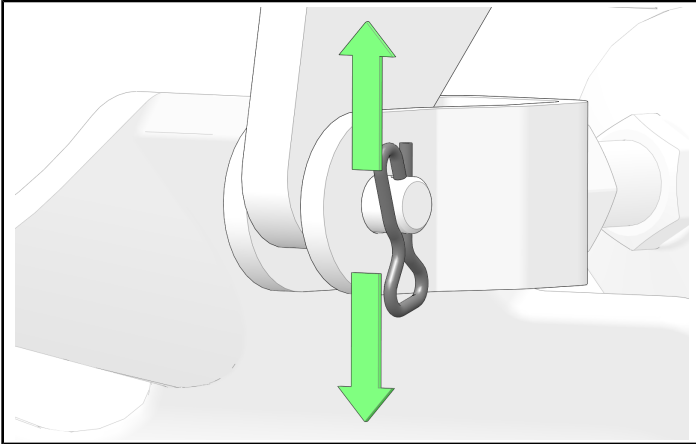
IMPORTANT

DO NOT allow the vehicle to be operated until you have repaired the vehicle as directed by Technical Service.

4. If the pin and clip are present, press the shoulder of the pin against the brake pedal arm to expose the clip.

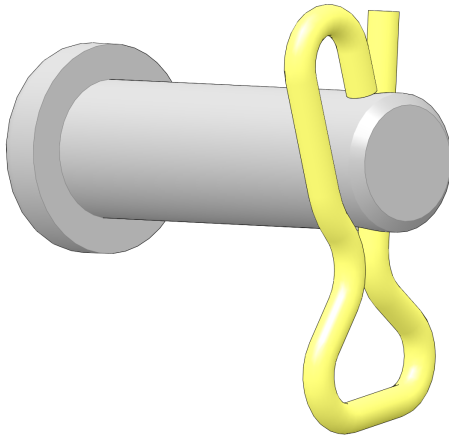


5. If the clip is properly installed, it can slide freely in the pin. By hand, gently "slide" the clip back and forth to confirm it moves freely.



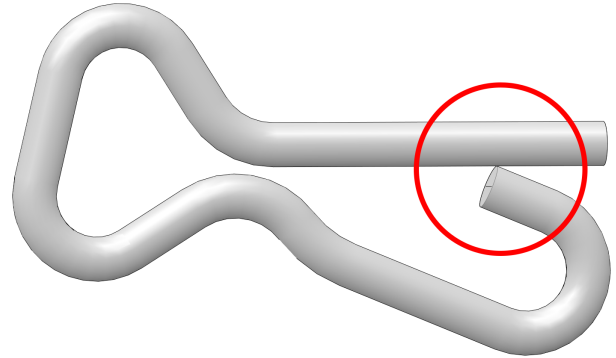
IMPORTANT

The clip **MUST** be installed as shown. The Hook end of clip should be contacting or nearly contacting the straight section of the clip. If you are not certain that the clip is fully seated, gently pull the clip to ensure it has proper engagement with the pin.



IMPORTANT

If a gap is present that is larger than the clip wire diameter, then the clip has been deformed and should be replaced.



STOP!

If the clip is damaged, or bent open to the degree that it could become disengaged from the pin during normal operation, submit an ASK Polaris case for further instructions.

- US/CAN Dealers: Submit an Ask Polaris Service & Warranty Question > Authorization: Non-Cosmetic & Polaris ESC.
- INT'L Dealers: Contact your Country Service Department

IMPORTANT

DO NOT allow the vehicle to be operated until you have repaired the vehicle as directed by Technical Service.

6. If clip is present and fully engaged, remove protective mats and inspect vehicle for damage incurred during repair. File a bulletin claim for T-18-02-A