



**NHTSA#** Jayco 18V-292  
Starcraft 18V-294

**Date of Publication:** June 2018

**TC#** Jayco 2018-243  
Starcraft 2018-244

**Job Code** Jayco 9901379  
Starcraft 9902379

**Series/Flat Rate** Remedy A: RC025 Add end plate/washers to lift mechanism .5 hr  
Remedy B: RC024 place Warning Label on unit .1 hr

**Recall  
Remedy**

- A. **Certain Model Year 2011 – 2013** camping trailers manufactured prior to October 2012 **AND** are equipped with a Power Roof Lift Mechanism; require installation of a stop plate to the mechanism. This Remedy is only required when the Date of Manufacture is **PRIOR TO OCTOBER 2012. RC025**
- B. **Certain Model Year 2011 – 2015** camping trailers with a Power Roof Lift require a **WARNING LABEL** placed in close proximity to the manual over-ride feature to alert consumer of risk and proper use. In addition to the Warning Label, an Operation Instruction Sheet is included with the Recall Notification Letter. Please review and follow for proper use of the Power Roof Lift and the Manual override. **RC024**

**Note: Kit can only be ordered using the Recall Order Form.**

**PARTS KIT**  
**Remedy A ONLY**  
Jayco 18V-292  
Starcraft 18V-294

- (1) Stop Plate
- (6) Washers



**Stop Plate**

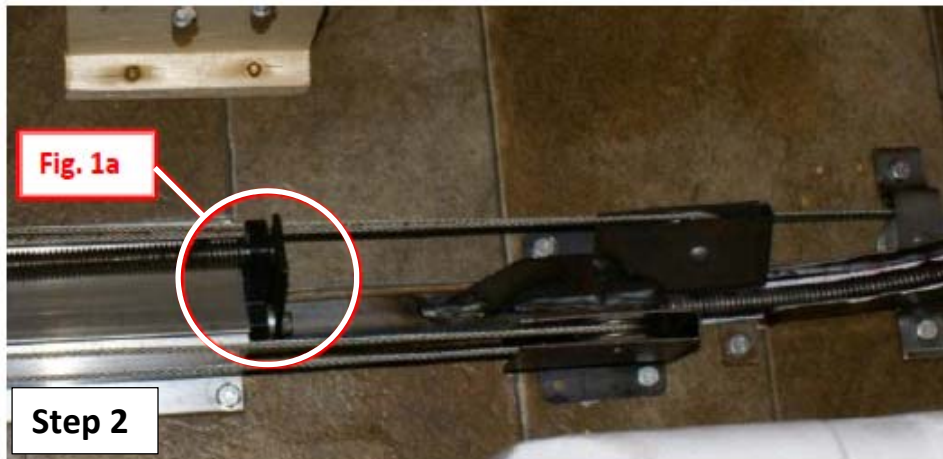
**Misc. Tools and Supplies**

Screw Gun with #2 square drive bit  
3/8" socket or nut driver

## Recall Remedy A

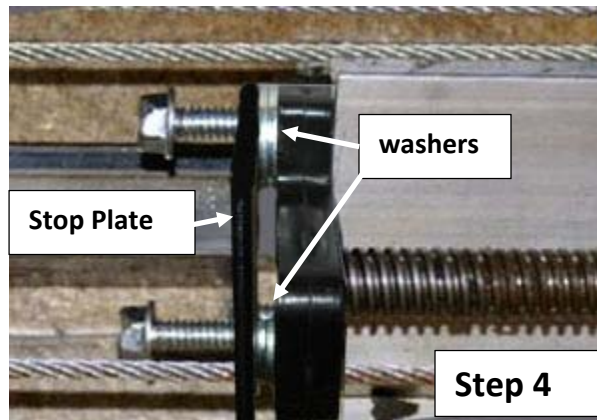
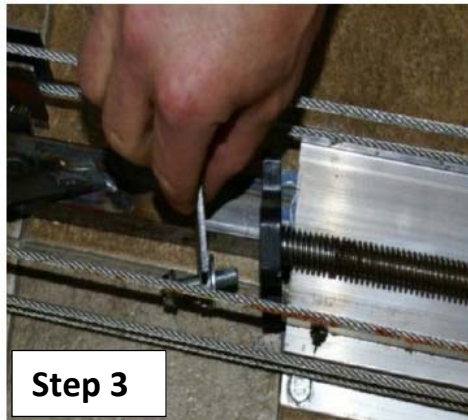
### INSTRUCTIONS – Installation of the Stop Plate – ONLY 2011-2013 Camping Trailers manufactured prior to OCTOBER 2012 with a Power Roof Lift System.

1. Locate the lifter system mechanism. You will be required to remove either a dinette seat panel, or a storage cabinet panel depending on the model.

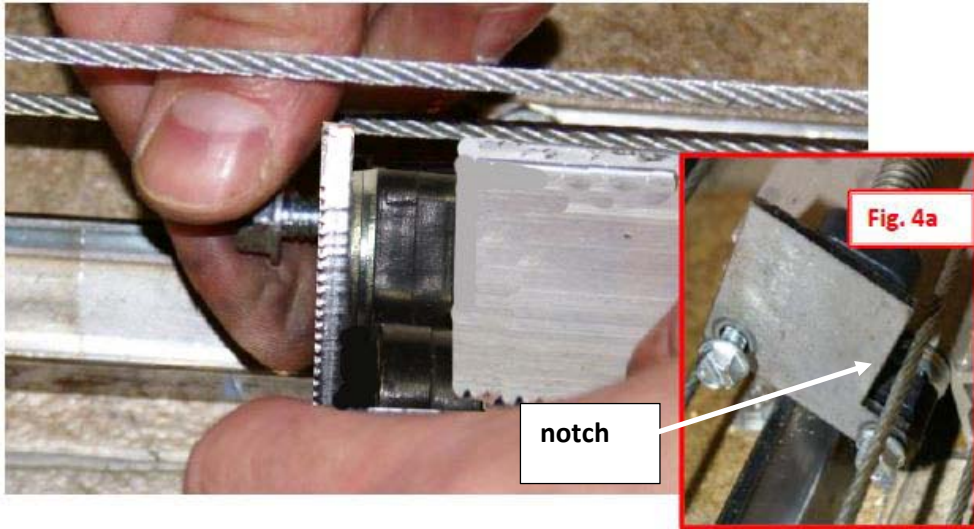


End Piece

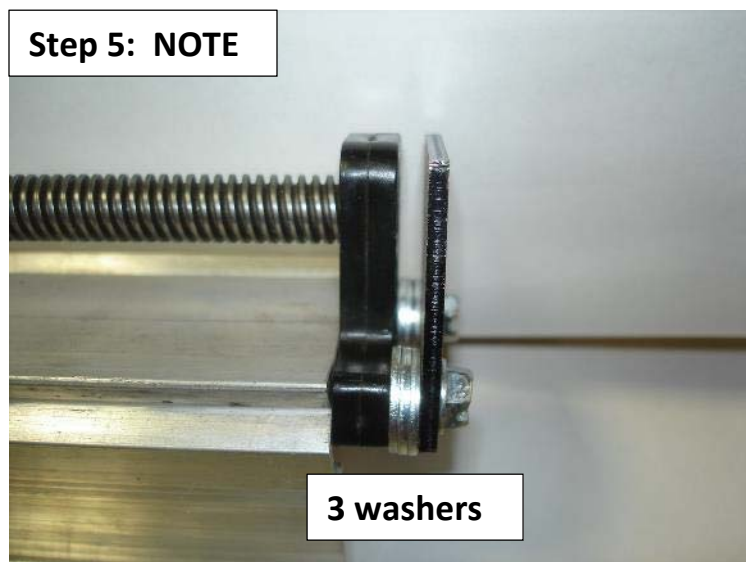
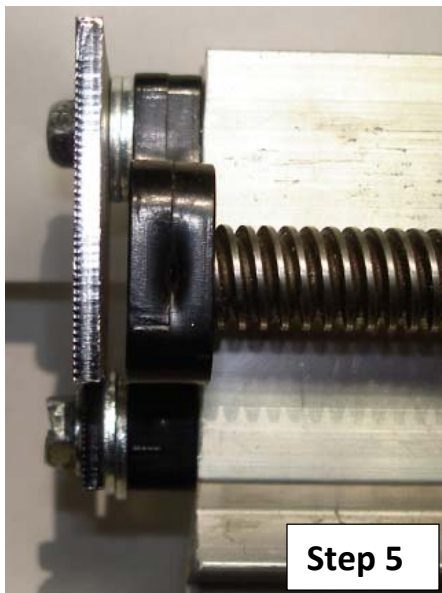
2. Once you have gained access, locate the lifter system actuator (end piece) **(Fig 1A)**



3. Using the 3/8" socket (or nut driver), remove the 2 screws holding the actuator to the aluminum extrusion.  
Remove the black plastic end piece.
4. Insert one of the screws through the hole in the stop plate, add 2 washers, then insert the screw through the hole in the end piece and install the screw into the aluminum extrusion. Insert the second screw through the other hole in the stop plate, add 2 washers, insert the screw through the hole in the end piece and install the screw into the aluminum extrusion. The end piece should be butted against the aluminum extrusion. Washers should be between the end piece and the stop plate.



**NOTE:** Looking at the stop plate, the notch should be on the right side so the stop plate does not restrict or touch the cable.



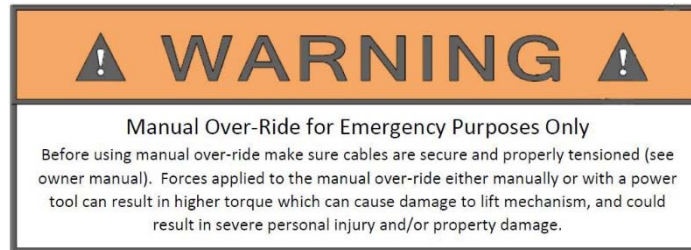
5. Tighten both screws making sure the screws are securely in place (cables not shown).

**NOTE:** Validate that if the threaded rod protrudes out the back of the end piece (between the stop plate and the end piece) that it does not make contact with the stop plate. If it makes contact with the stop plate, then a third washer should be added to each screw. The threaded rod should be contained inside the black end piece and not make contact with the stop plate.

6. Return access configuration to the original position.
7. Re-install the dinette seat panel or storage cabinet panel.

## Recall Remedy B

Installation of WARNING LABEL - required on ALL 2011-2015 affected camping trailers.



### Manual Over-Ride Warning



1. Using isopropyl alcohol and a clean shop rag, clean the area where the label will be applied.
2. Allow the area to dry for at least 30 seconds.
3. Remove the protective backing from the label.  
Apply the warning label underneath the tail light and to the right of the manual override access cover.  
Remove any air bubbles from the label.

**NOTE: Do not attempt to remove or adjust the label once it has come in contact with the surface. Doing so may damage the label or cause it not to adhere properly to the surface.**