



Intermittent Air Gauge Operation

RECALL

Models Affected: Certain 2018 - 2019 Model Year Vision and All American Air Brake Buses

ISSUE

When turning the key to the ignition "ON" position, the two gauges on the instrument cluster that display primary and secondary system air pressure intermittently display "0 psi" instead of the correct air pressure in the tanks.

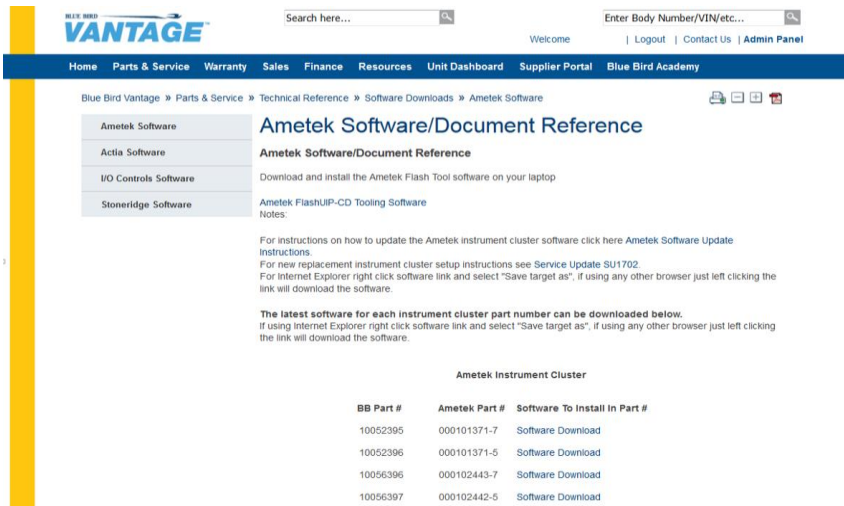
CORRECTIVE ACTION

Affected buses will require instrumentation software be updated to the latest version. Complete the corrective action software update procedure below.

SOFTWARE UPDATE PROCEDURE

WARNING: Always follow all Federal, State, Local and Shop safety standards and use proper safety equipment, and thoroughly read and understand all instructions before performing these procedures.
NOTE: This software update is NOT applicable to buses with hydraulic brakes.

1. Follow instructions on Page 2 and verify the "Spec" and "SW Version" number of the instrument cluster installed on the affected bus being serviced.
2. Based on "Spec" number of instrument cluster, download applicable software file from the Blue Bird Vantage website. Note: Requires Vantage Blue Bird Dealer login access.
<https://vantage.blue-bird.com/Portal/Ametek-SoftwareDocument-Reference.aspx>



3. Follow instructions on Pages 3-7 and install applicable software file in instrument cluster. Note: Cluster will display "Finalizing Update" **DO NOT Remove Power!**
4. Follow instructions on Page 2 and verify "SW Version" displayed is the updated software version level you just installed. Update procedure is complete.

R I 8 Z E
- R E C A L L C A M P A I G N -

R18ZE - Intermittent Air Gauge Operation

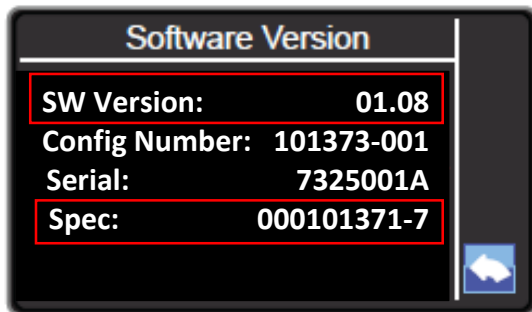
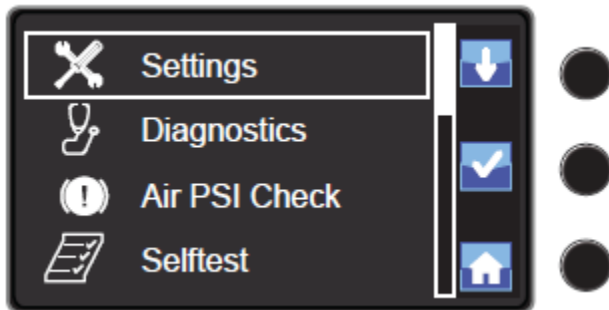
Access the Settings and Diagnostic menu by setting the Park Brake and then from the Drive Mode screen press the BOTTOM button and hold for more than 3 seconds or until the menu appears. Press the top button to move or toggle the selection box through the list as indicated by the softkey arrows. The item in the selection box will be selected when the middle button is pressed (as indicated by the softkey check mark). Select "Selftest" then toggle the selection box through the list and then select "Software Version".

Verify software version is correct for applicable Spec number.

If yes, update procedure is complete. If no, verify software version being installed and reflash.

Note: The "SW Version" number displayed is the software version level currently installed.

Note: The "Spec" number displayed is the Ametek part number listed on the Vantage website and below.



BB Part #	Ametek Part #	Software To Install In Part #
10052395	000101371 – 7	297101373-001k V1.8.s19
10052396	000101371 – 5	297101373-001k V1.8.s19
10056396	000102443 – 7	297102554-001c V2.0.s19
10056397	000102442 – 5	297102554-001c V2.0.s19

R18ZE - Intermittent Air Gauge Operation

Objective

These instructions will walk you through the process of updating the Ametek instrument cluster software version. Ametek FlashUIP-CD tooling software and the latest software versions to install in the instrument cluster are both available under Parts & Service, Software Downloads, Ametek Software, on the Blue Bird Dealer Vantage website. Note: Ametek instrument clusters used in Blue Bird buses have an “.s19” software file extension. Ametek instrument cluster software can be updated on a workbench or with instrument cluster installed on a bus.

Materials

Laptop with Ametek FlashUIP-CD tooling software and the latest Ametek cluster ‘.s19’ software version.

An RP1210 communication adapter supported by the Ametek FlashUIP-CD tooling software.

Blue Bird recommended RP1210 communication adapter: Dearborn DPA-5 USB

Tool #10055458 Blue Bird bench program harness. Only required if programming Ametek cluster on workbench.

Tool #10049528 Blue Bird J1939 250K adapter. Maybe required if programming Ametek cluster on bus, reference Service Memorandum SM1603.

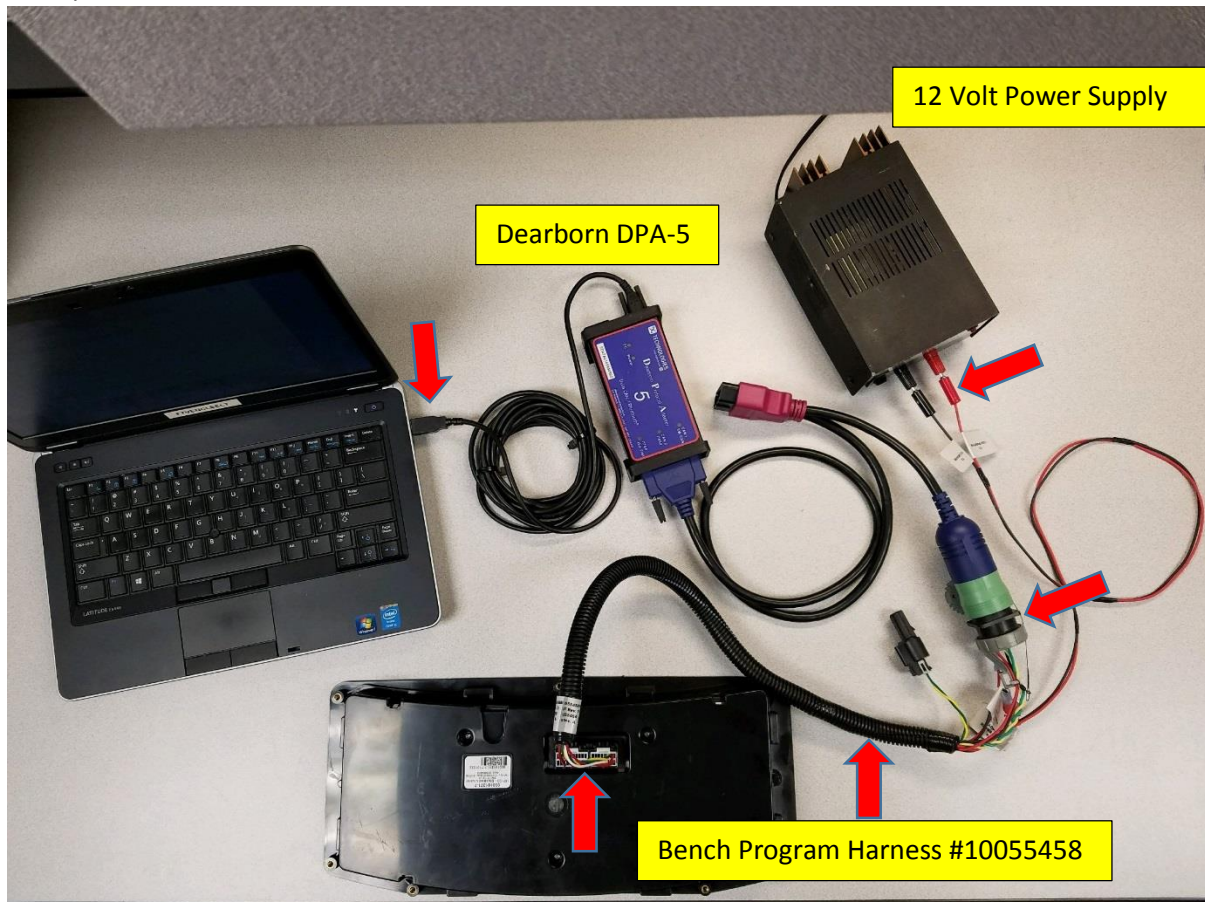
12V power supply. Only required if programming Ametek cluster on workbench.

Procedure

Connecting Laptop and Ametek Cluster to Update Software on a Workbench

To update the Ametek instrument cluster software version on a workbench, connect bench program harness #10055458 to rear side of instrument cluster. Connect black J1939 diagnostic port connector on bench program harness to a Dearborn DPA-5 or equivalent RP1210 communication adapter. Then connect Dearborn DPA-5 or equivalent RP1210 communication adapter to the laptop using the USB connection. Last connect bench program harness #10055458 to a 12V power supply. Turn 12V power supply on.

Example Workbench connections shown below:



R18ZE - Intermittent Air Gauge Operation

Connecting Laptop and Ametek Cluster to Update Software on a Bus

To update the Ametek cluster software version on a bus, connect Dearborn DPA-5 or equivalent RP1210 communication adapter to the laptop using the USB connection and then connect to the J1939 diagnostic port of the bus. Note: Based on year model, engine model, J1939 diagnostic port will be located on lower left or right side of the steering column. Cummins diesel engines that are EPA/CARB certified (Built on or after 01/18/2016) will require service tool adapter #10049528, reference Service Memorandum SM1603.

Example: Vision bus diagnostic port connections shown below:

Note: Tool adapter #10049528 is ONLY required with Cummins (Bus has Green Diagnostic Port).



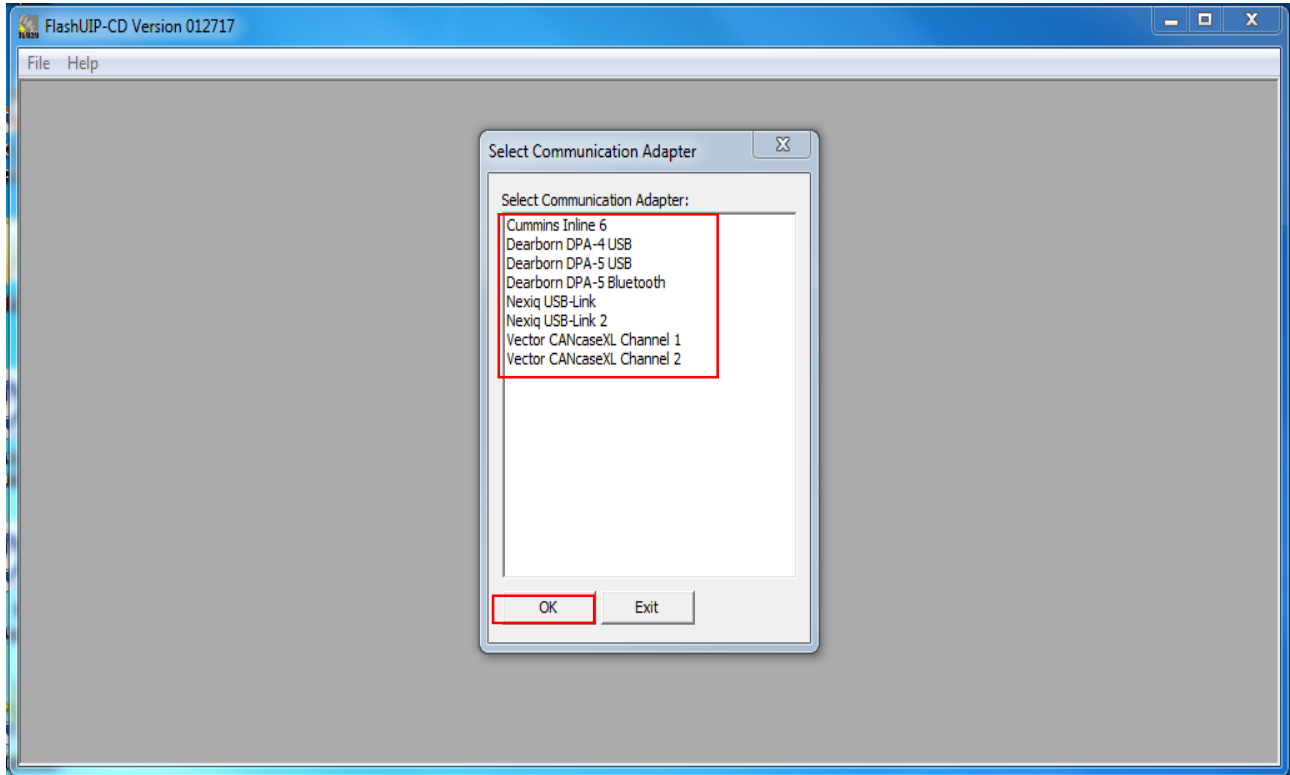
Downloading and Updating Ametek Software

On Blue Bird Dealer Vantage website download and save to Desktop the Ametek software to install in the instrument cluster. Note: Software to install in the instrument cluster has an '.s19' file extension type. Download Ametek FlashUIP-CD tooling software zip file. Extract all, right click, select send shortcut to Desktop. Double click Desktop shortcut to open FlashUIP-CD software tool on your laptop:

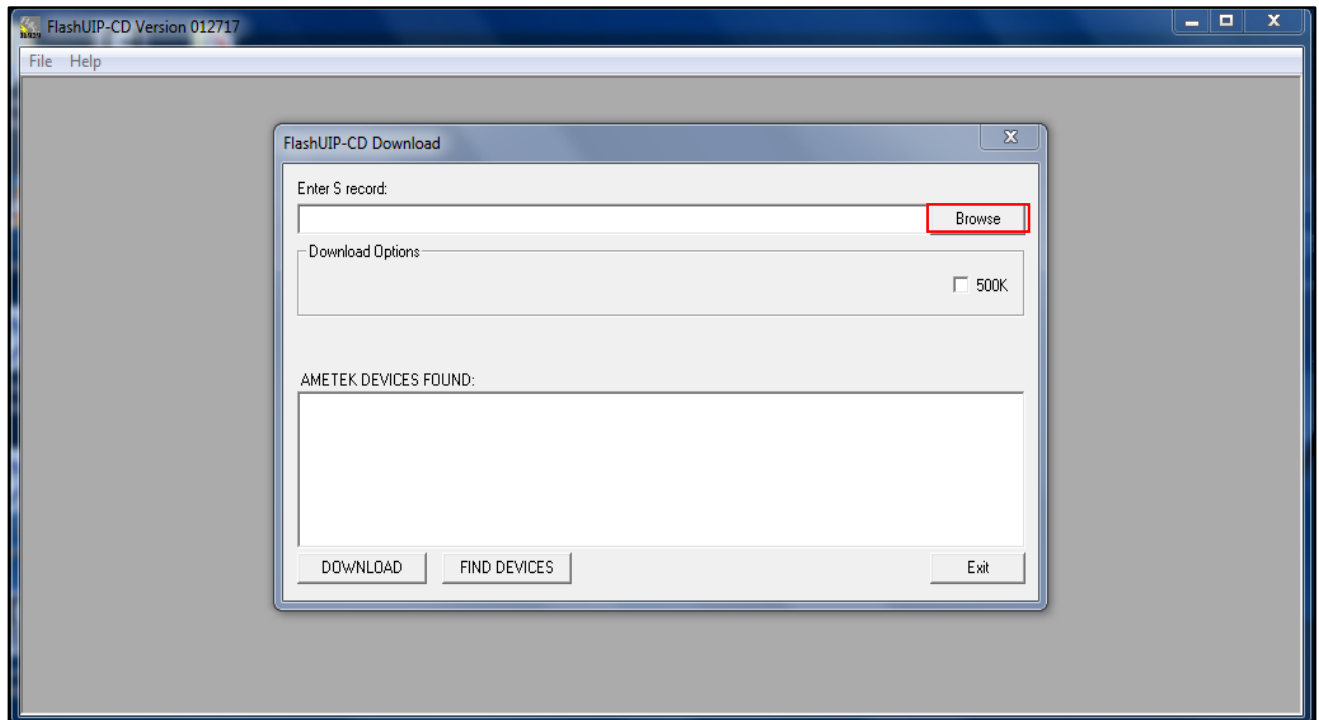


R18ZE - Intermittent Air Gauge Operation

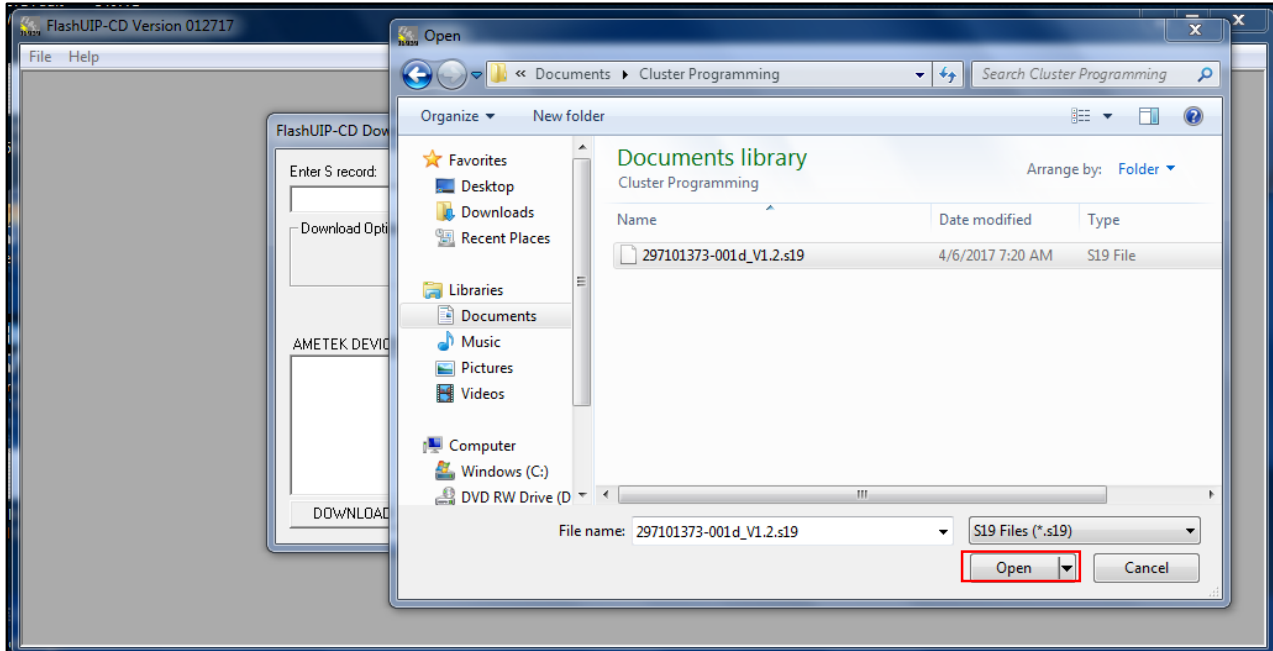
Select the applicable supported RP1210 communication adapter from the list and click 'OK':



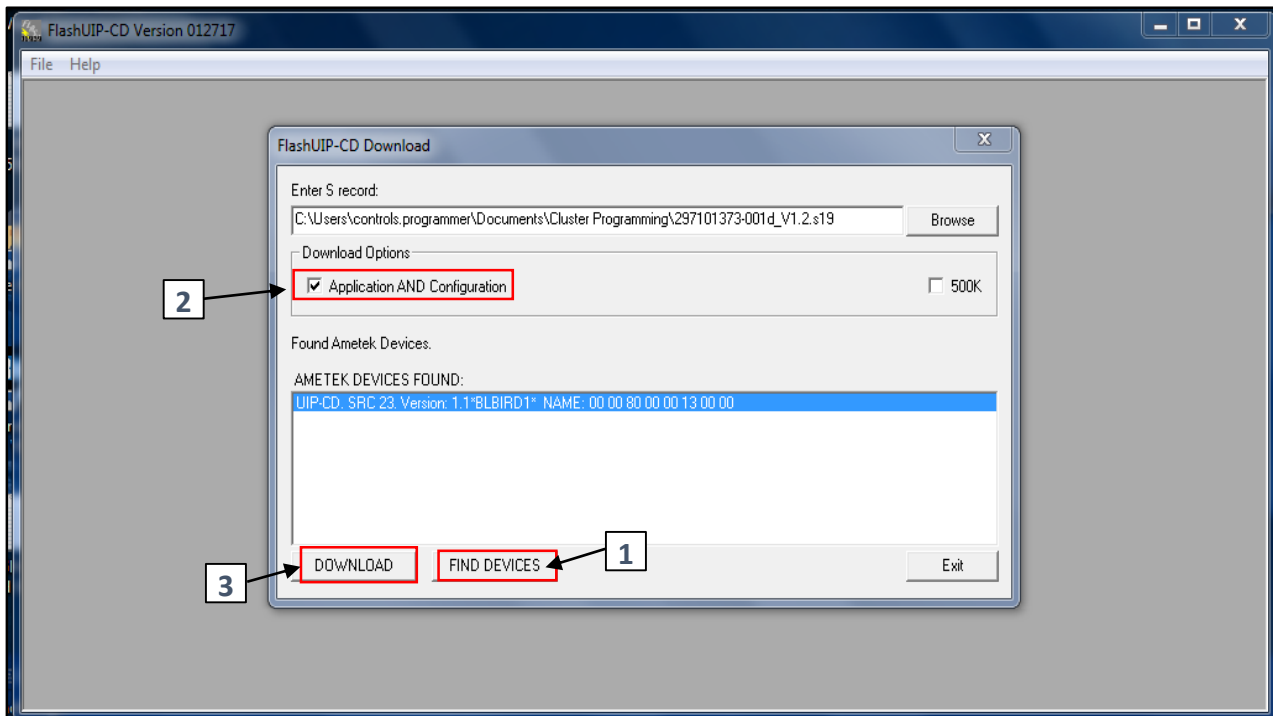
From the FlashUIP-CD Download screen, click 'Browse' and select the .s19 software to be installed in cluster and click 'Open':



R18ZE - Intermittent Air Gauge Operation

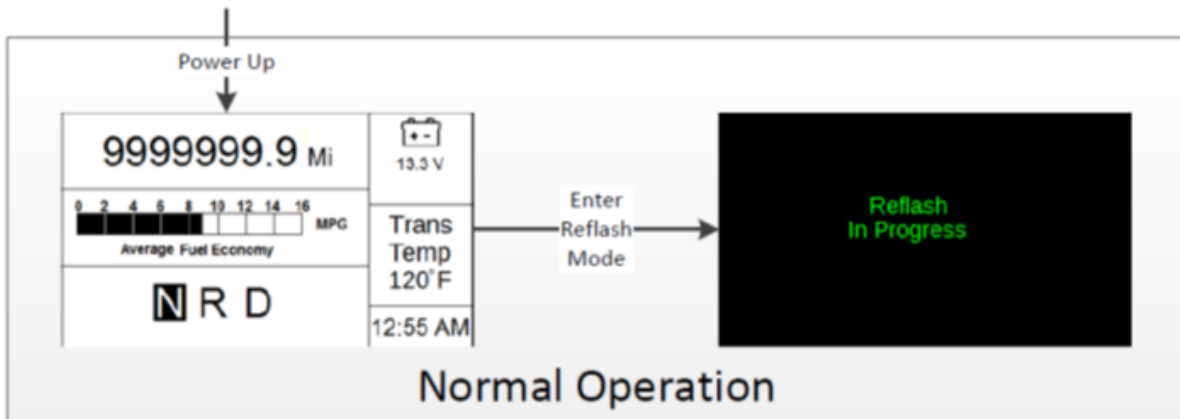


Once the correct file is selected, click 'FIND DEVICES' at the bottom of the window. Then check the box for 'Application AND Configuration' and click 'DOWNLOAD':

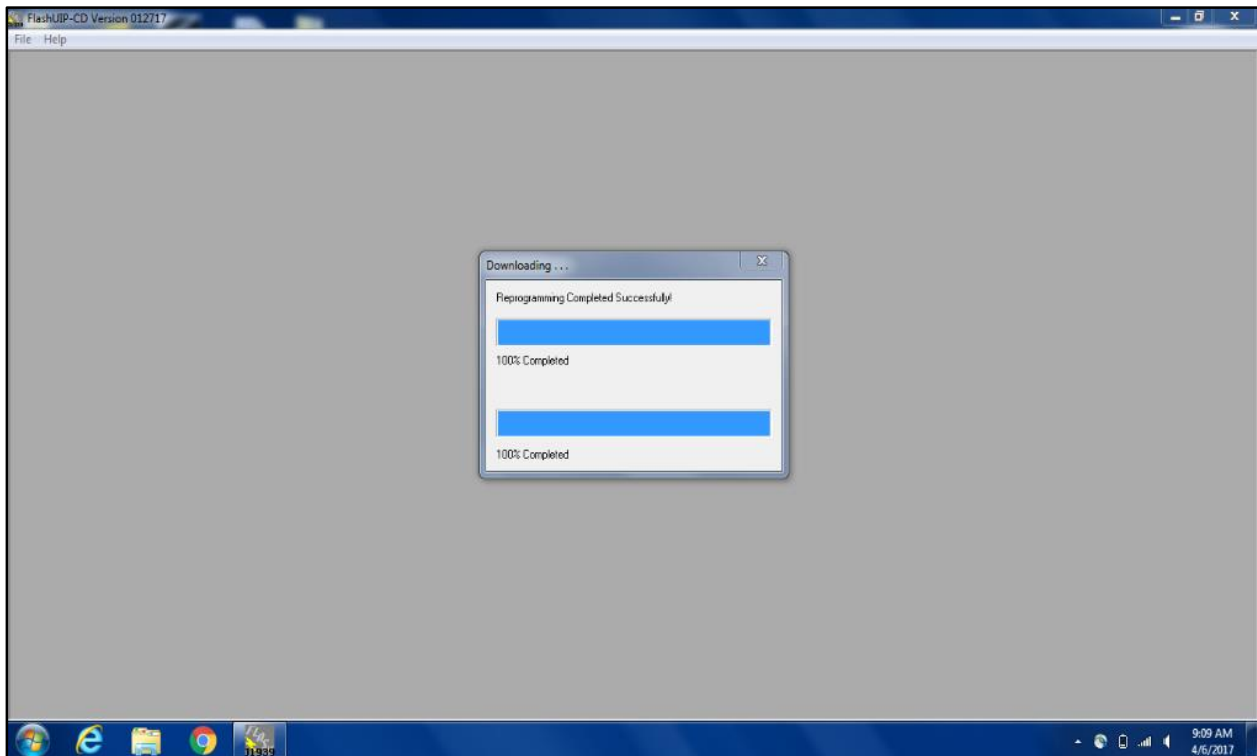


R18ZE - Intermittent Air Gauge Operation

The Ametek FlashUIP-CD tooling software erases the current files and then begins the software update. Once downloading has started the instrument cluster LCD will display 'Reflash In Progress'.



Once downloading has completed, the screen will display 'Reprogramming Completed Successfully!' Both status bars will display '100% Completed' as shown below and you may exit the application.

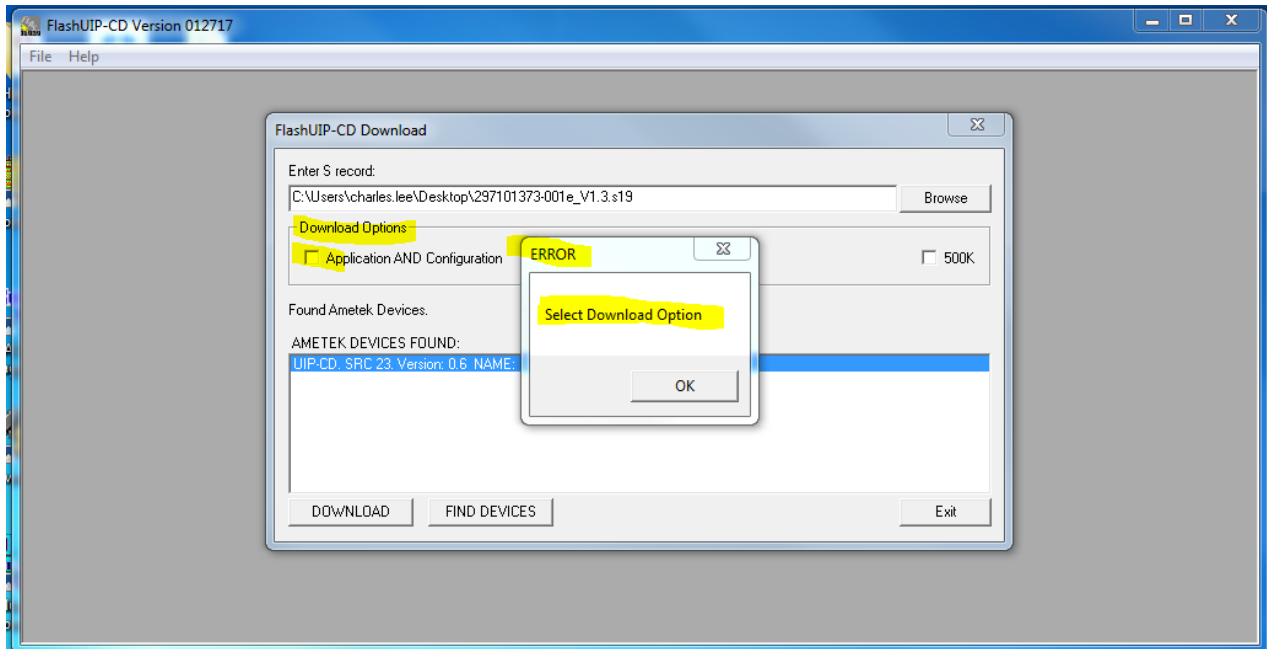


R18ZE - Intermittent Air Gauge Operation

Possible Error Messages When Programming, Possible Cause, and What to Check

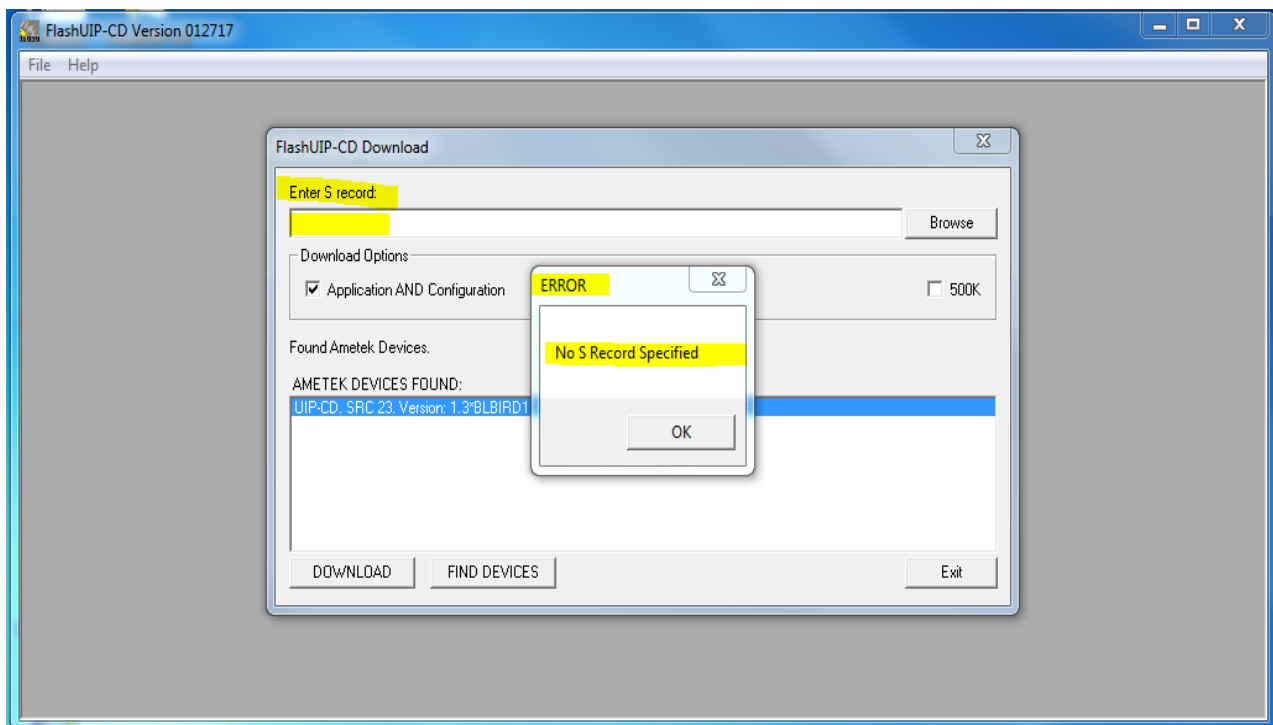
ERROR 'Select Download Option'

The 'Application AND Configuration' box was NOT checked before clicking the "DOWNLOAD" button.



ERROR 'No S Record Specified'

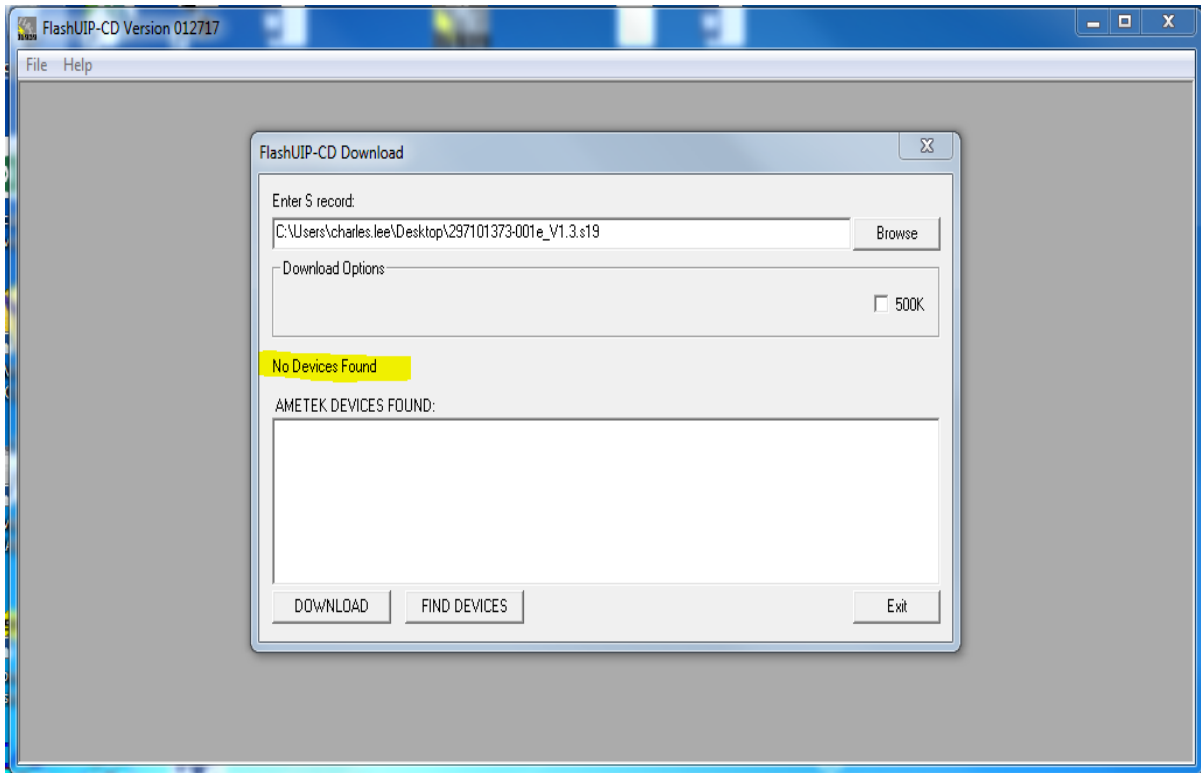
.s19 software file MUST be selected. Click 'Browse' and select the .s19 software to be installed in cluster and click 'Open':



R18ZE - Intermittent Air Gauge Operation

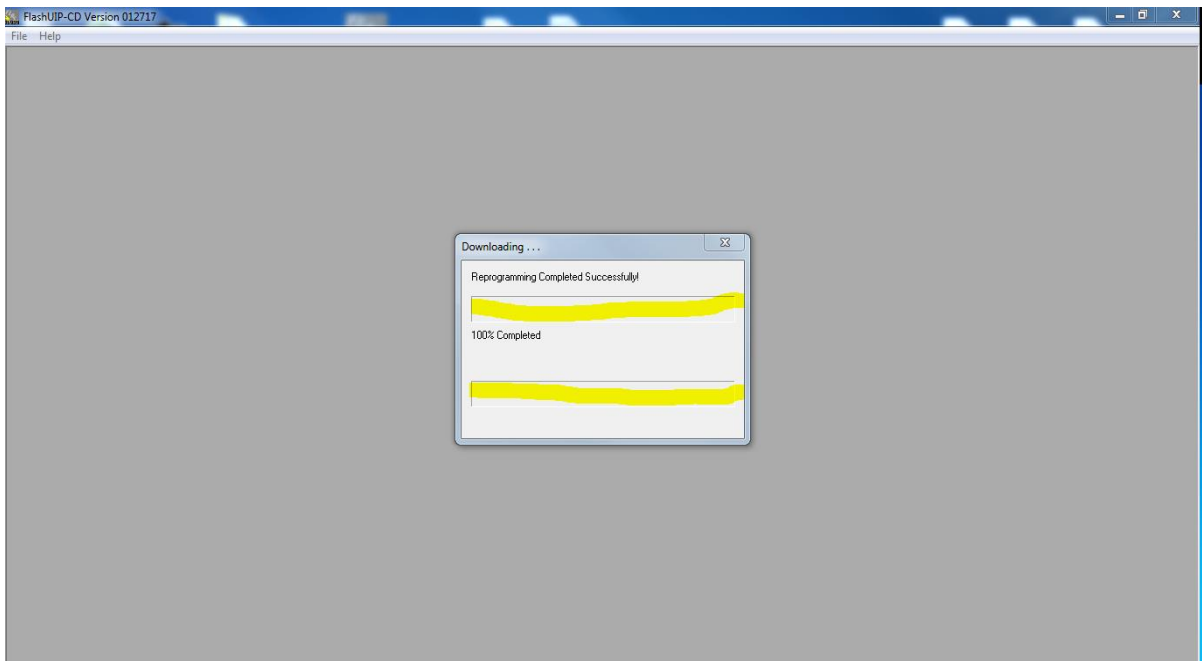
'No Devices Found'

Check J1939, battery, ignition, and ground connections at the cluster and the diagnostic port connector.



'Both status bars are blank'

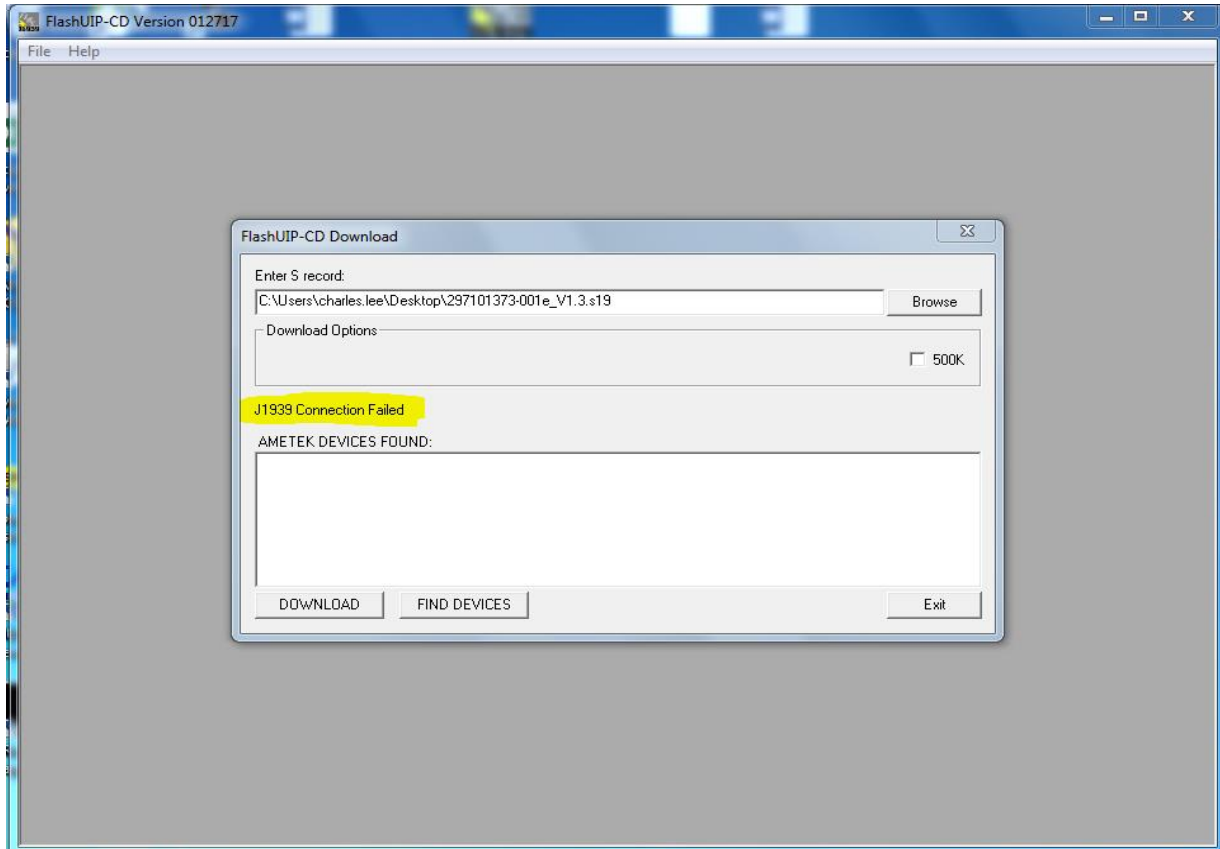
The incorrect file type was selected. Insure the file type selected is '.s19'



R18ZE - Intermittent Air Gauge Operation

'J1939 Connection Failed'

Note: Tool adapter #10049528 is REQUIRED on buses with Cummins and "Green" diagnostic port connector. Check J1939, battery, ignition, and ground connections at the cluster and the diagnostic port connector. Also check the USB cable connection from the Laptop to the RP1210 communication adapter. If all connections check good use laptop 'Device Manager' to verify communication adapter is functioning properly and recognized (Communication adapter software driver installed correctly).



'Reflash Required'

Instrument cluster software files were erased and updated process was not successful. Possible causes include loss of power, ground, or J1939, during software update. Check J1939, battery, ignition, and ground connections at the cluster and the diagnostic port connector.

