



Thor Motor Coach Recall Repair Instructions

Recall #	18V-120 2018-101		
Description/Title:	29J Outlaw Seat Belt Bracket		
Affected Product Line(s):	Certain MY 2018 & 2019 29J Outlaw motorhomes		
Service Campaign # :	RC000151	Released Date:	04/02/2018
Repair Code:	TMCRC80472V	Document Date:	04/02/2018
Time Allowed:	0.67	Document Revision:	A

Issue:

It has been discovered that on Certain MY 2018/2019 29J Outlaws, the sofa seat belt bracket does not meet the strength requirements of FMVSS/CMVSS 210.

Part(s) Required:

TMC Part #0418139 – Recall RC000151 Sofa Seatbelt Install Kit

Kit Includes: (1) Bracket, Seatbelt Rear (Print TFM5489)
(1) Bracket, Seatbelt Front (Print TFM5492)
(1) Angle, Frame Reinforcement (Print TFM5493)
(8) Plate, Frame Reinforcement (Print TFM5490)

NOT INCLUDED IN PARTS KIT

(Please obtain these to complete recall. Be sure to claim as shop supplies with recall):

- (12) Bolt, Hex, 3/8" – 16 x 1.5", Grade 5
- (12) Nut, 3/8" – 16, Hex
- (12) Washer, 3/8" Split Lock
- (24) Washer, Flat 3/8" Zinc



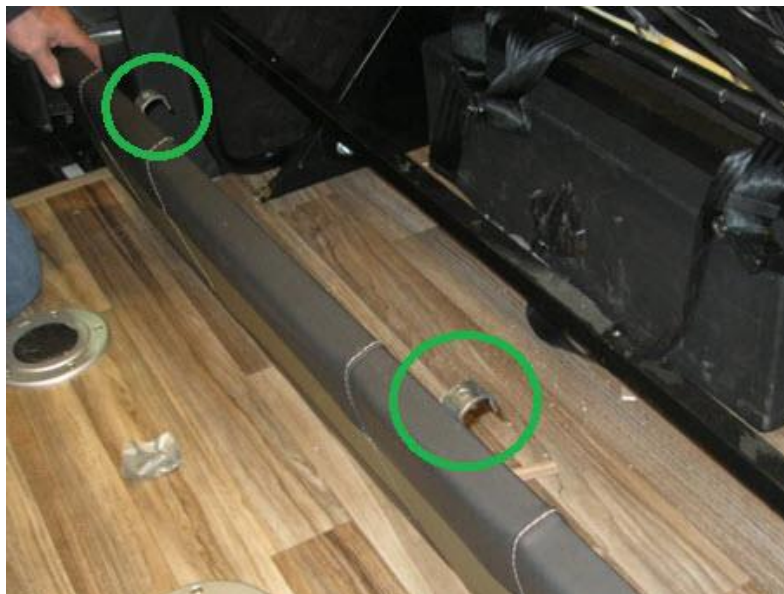
Thor Motor Coach Recall Repair Instructions

Instructions:

1. Locate the sofa on the passenger side of the motorhome.



2. Remove the sofa arm rests, then lift the seat up enough to access and remove the screws securing the kickboard to the sofa frame.



3. Remove the 4 nuts (2 per side) that secure the seat back to the sofa framing.



4. Remove and discard the 4 seatbelt bolts from the seatbelt bracket.



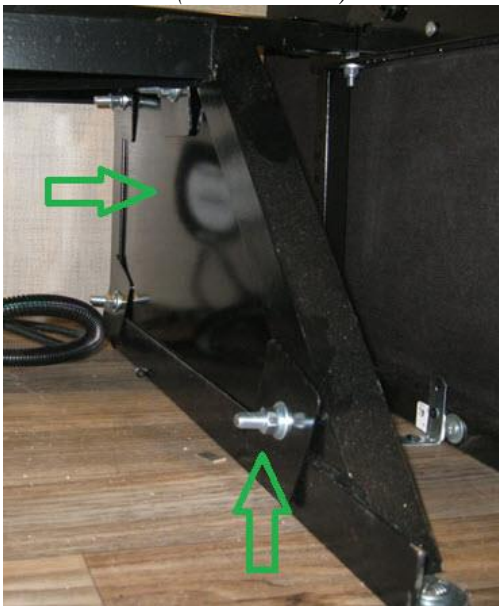
5. Add the Frame Reinforcement Angle (print TFM5493) on top of the seatbelt bracket with the bolt holes aligned. Position the vertical leg of the angle so it's against the sidewall. Reinstall the 2 seatbelts with 4 3/8"-16 x 1 1/2" grade 5 bolts as specified on the assembly drawing (print TFM5491). Use 3/8"-16 grade 5 nuts, flat washers, and lock-washers. Torque the 4 bolts to 18-25 ft-lbs. **(NOTE: nut, bolts, flat washers, and lock-washers are not included in recall kit. Please obtain and claim as shop supplies with recall.)**



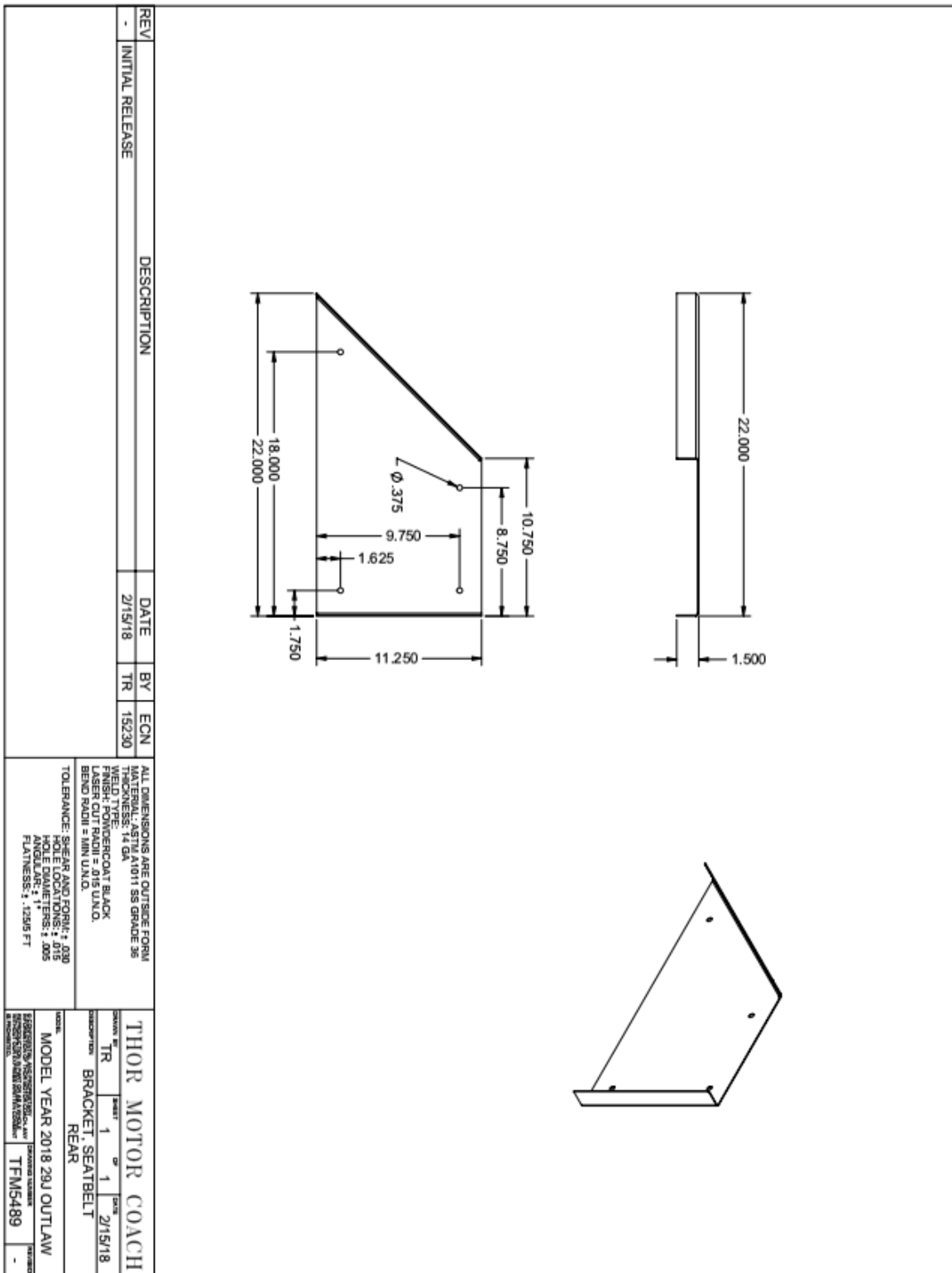
6. Install the front (print TFM5492) and rear (print TFM5489) seatbelt bracket reinforcements using the bolts and reinforcement plates (print TFM5490) specified on assembly drawing (print TFM5491). The reinforcement plates will be used to clamp the front and rear brackets to the existing seat belt bar. Torque the bolts to 18-25 ft-lbs.

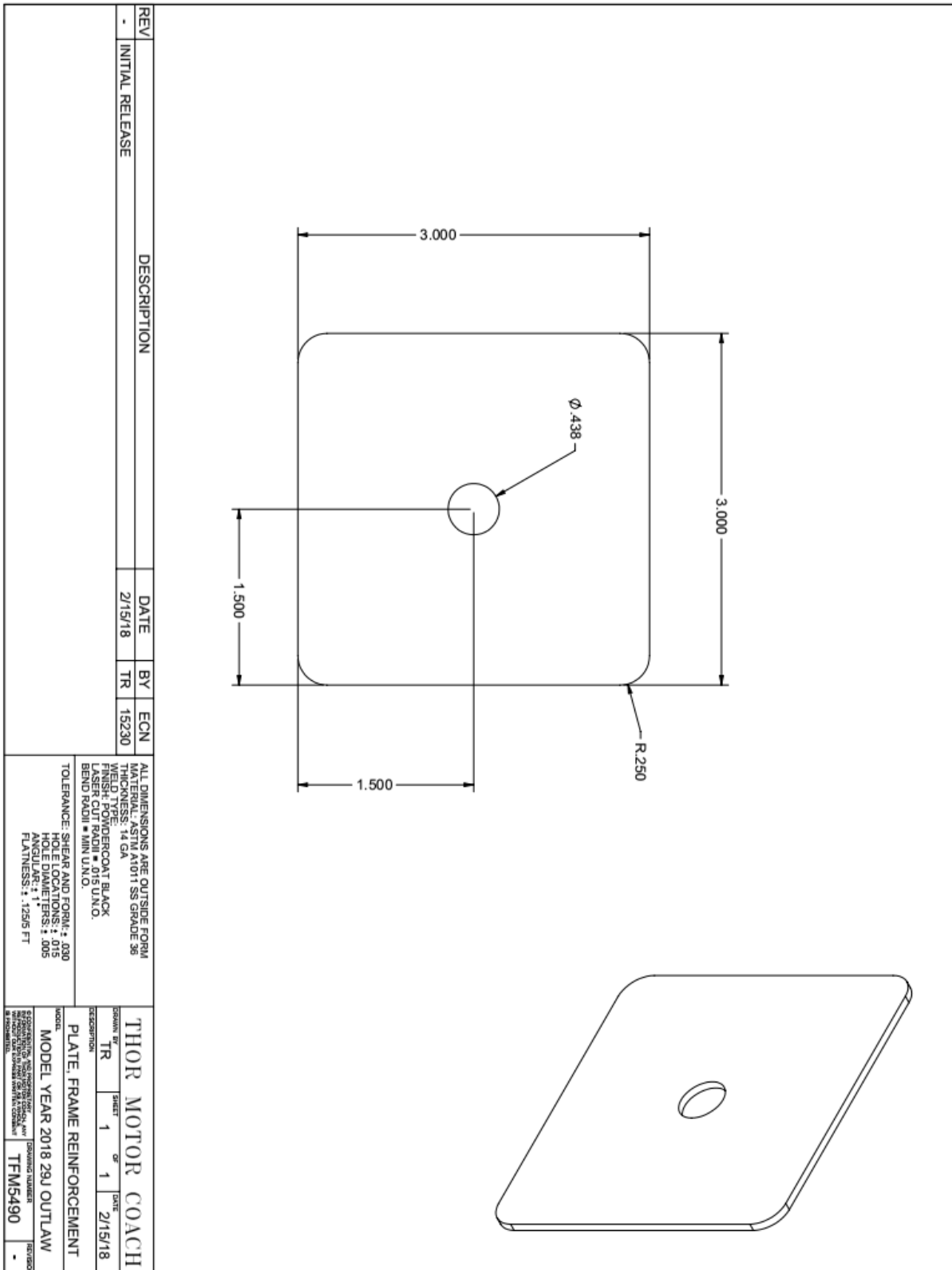
(Rear bracket)

(Front bracket)

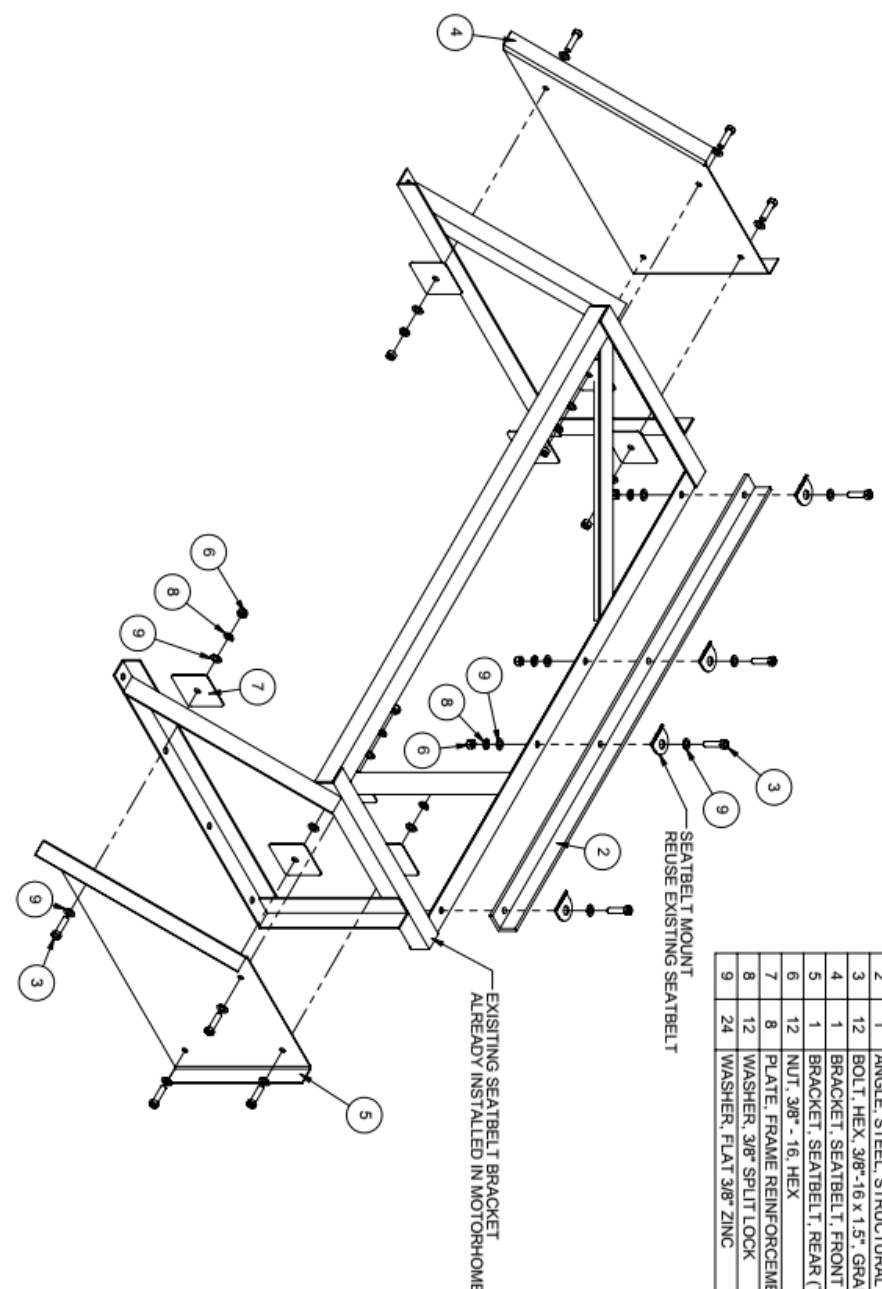


7. Reinstall kickboard, seat back, and removable arm rests.





REV	DESCRIPTION	DATE	BY	ECN	SPECIAL NOTES:
-	INITIAL RELEASE	2/16/18	TR	15230	



BOM	
NO	DESCRIPTION - W x L (GRAIN)
1	ANGLE FRAME REINFORCEMENT (TFM5493)
2	ANGLE STEEL STRUCTURAL 1 1/2 x 1 1/2 x 1/4
3	BOLT, HEX, 3/8"-16 x 1.5" GRADE 5
4	BRACKET, SEATBELT, FRONT (TFM5492)
5	BRACKET, SEATBELT, REAR (TFM5489)
6	NUT, 3/8" - 16, HEX
7	PLATE, FRAME REINFORCEMENT (TFM5490)
8	WASHER, 3/8" SPLIT LOOK
9	WASHER, FLAT 3/8" ZINC

<p>THOR MOTOR COACH</p> <p>DRAWN BY: TR</p> <p>SHEET 1 OF 1</p> <p>DATE: 2/16/18</p> <p>DESCRIPTION: ASSEMBLY SEATBELT BRACKET INSTALLATION</p> <p>MODEL: MODEL YEAR 2018 29J OUTLAW</p> <p>DATE: 2/16/18</p> <p>REVISION: -</p>	<p>DESIGNED BY: TR</p> <p>DATE: 2/16/18</p> <p>DESCRIPTION: ASSEMBLY SEATBELT BRACKET INSTALLATION</p> <p>MODEL: MODEL YEAR 2018 29J OUTLAW</p> <p>DATE: 2/16/18</p> <p>REVISION: -</p>
---	---

