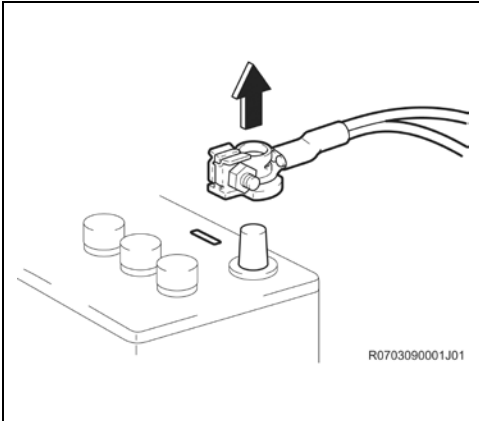


FRONT AIRBAG SENSOR RH NX300h

REMOVAL

1. RECORD SETTINGS OF THE AUDIO SYSTEM, AIR CONDITIONER, ETC.

- a. For devices such as the audio system, air conditioner, etc, record current settings before disconnecting the negative battery cable.



2. DISCONNECT NEGATIVE BATTERY CABLE



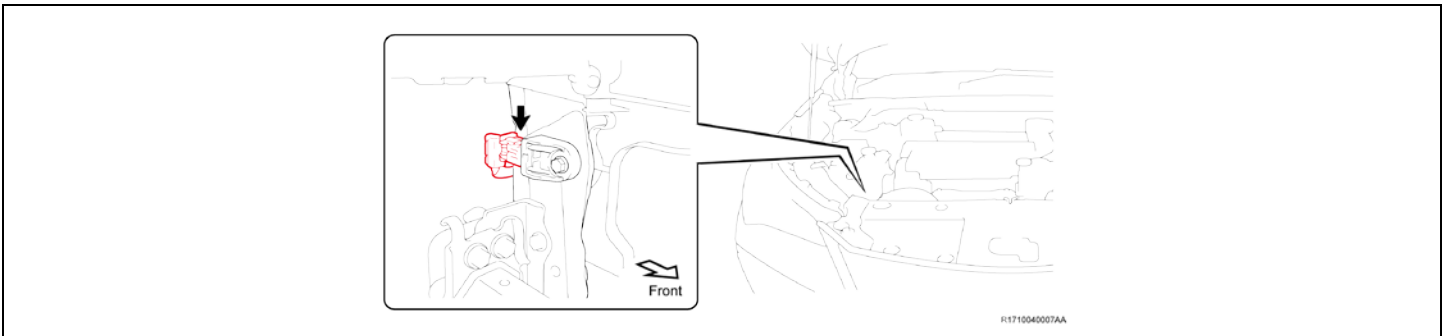
- Wait at least 90 seconds after disconnecting the cable from the negative battery terminal to prevent airbag and seat belt pretensioner deployment.
- For models with a HDD navigation system, wait at least 6 minutes before disconnecting the battery. It takes approximately 6 minutes for the system to save information and settings after the engine switch is turned off.
- Follow all precautions as outlined on TIS before servicing the SRS system.

3. REMOVE FRONT AIR BAG SENSOR RH

- a. Disconnect the connector following the steps below.



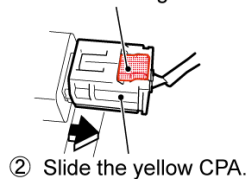
- This special connector has a double locking mechanism and needs to be handled with care.
- DO NOT apply pressure on the wire harness.



- (1) To unlock the first lock, keep pushing down the white housing lock and then slide the yellow CPA towards the wire harness.
- (2) To unlock the second lock, keep pushing down the white housing lock again and disconnect the connector.

[Unlock the first lock]

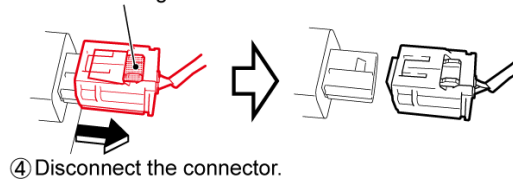
- ① Keep pushing down the white housing lock.



- ② Slide the yellow CPA.

[Unlock the second lock]

- ③ Keep pushing down the white housing lock.



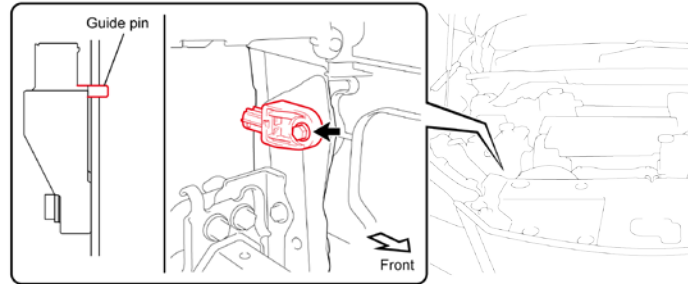
- ④ Disconnect the connector.

R1710040011A01

- b. Remove the bolt while holding the front air bag sensor RH.
- c. Mark and store the removed front air bag sensor RH in a separate container so as to not reinstall it in error.



If you **DO NOT** hold the sensor, it may be rotated together with the bolt and the guide pin may be broken.



F171004008AA

INSTALLATION

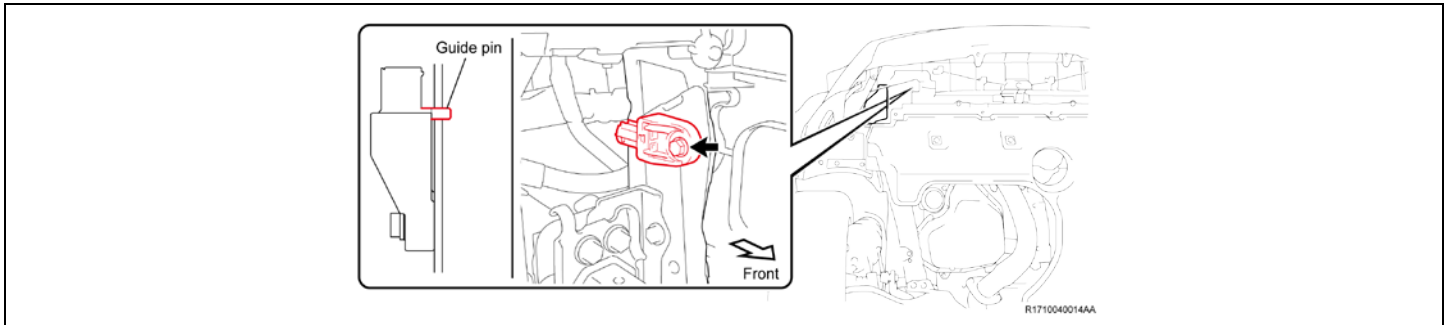
1. INSTALL A **NEW** FRONT AIR BAG SENSOR RH

- Engage the guide pin of a **NEW** front air bag sensor RH and hold it in place.
- Reinstall the bolt.

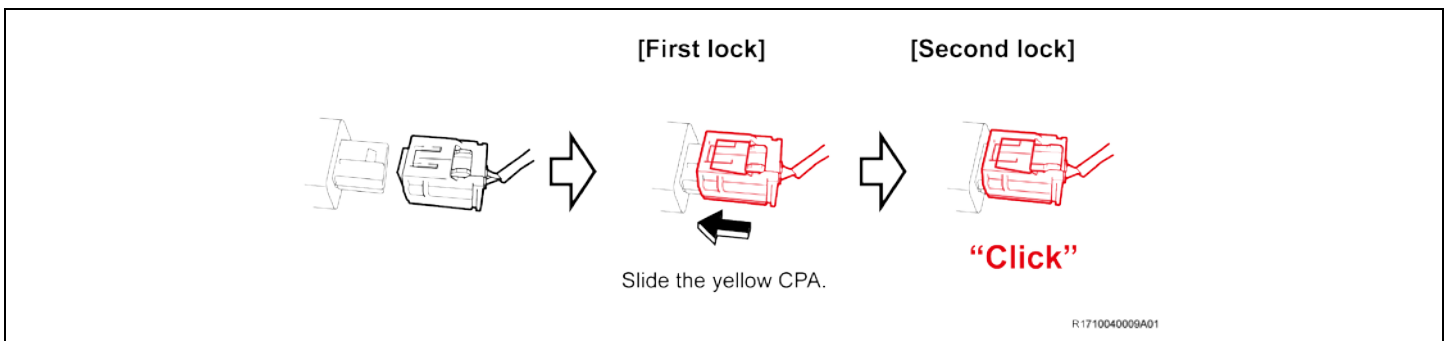
Torque: 80 in.lbs {9 N·m, 92 kgf·cm}



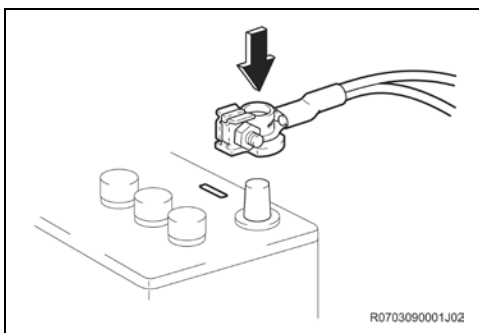
- **DO NOT** use a sensor which has been affected by strong shocks such as being dropped.
- If you **DO NOT** hold the sensor, it may be rotated together with the bolt and the guide pin may be broken.



- Engage the connector of the **NEW** front air bag sensor RH holding the sides of its yellow CPA (A click sound can be heard).



Before carrying out the following procedures, replace another sensor if needed.



2. RECONNECT NEGATIVE BATTERY CABLE

3. INSPECT THE AIR BAG SENSORS USING THE JUDGMENT SOFTWARE

4. RESTORE VEHICLE

- Perform system initializations.